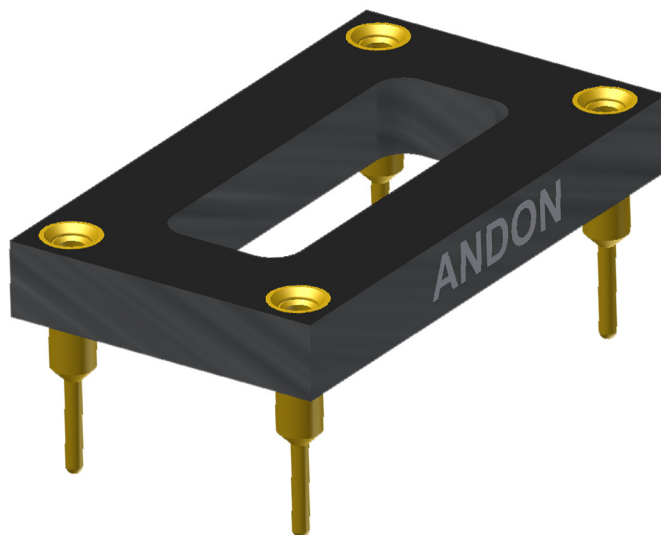




RoHS Compliant  
ISO 9001  
Certified

## **OPTOELECTRONIC SOCKETS FOR**



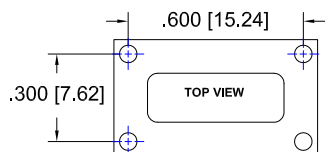
***Largest Line of High Reliability Sensor Sockets  
with Andon's Unique Senstac™ Contact***

[www.andonelect.com](http://www.andonelect.com) or [www.andonelectronics.com](http://www.andonelectronics.com)

PLETRONICS, INC. is a Copyright © of PLETRONICS, INC.

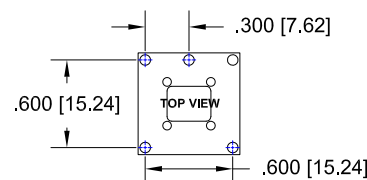
PLETRONICS, INC.						
PLETRONICS, INC. Model Number	Andon Part Number Replace "XXX" with Terminal Type	Terminal Type		Pin Ø [in]	Figure Number	Page Number
		Thru-Hole	Surface Mount			
DIL 14 PACKAGE 4 PIN (IECC002)	C10-314-04-01-XXX-R27-L14	01S	93S	.018	1	1
GPS-TCXO	CSP880-15-01-XXX-R27-L14	01S	93S	.018	6	2
HC-49/U CRYSTAL	CSP192-02-01-XXX-R27-L14	01S	93S	.018	5	2
LP21/LP24/LP49 SERIES	CSP192-02-01-XXX-R27-L14	01S	93S	.018	5	2
MP49 SERIES	CSP192-02-01-XXX-R27-L14	01S	93S	.018	5	2
OEM 4121-10.00M	C10-314-04-01-XXX-R27-L14	01S	93S	.018	1	1
OEM 4201-19.20M	C10-314-04-01-XXX-R27-L14	01S	93S	.018	1	1
OEM 4202-20.00M	C10-314-04-01-XXX-R27-L14	01S	93S	.018	1	1
OEM 4203-26.00M	C10-314-04-01-XXX-R27-L14	01S	93S	.018	1	1
OEM 4205-19.20M	C10-314-04-01-XXX-R27-L14	01S	93S	.018	1	1
OEM 4206-20.00M	C10-314-04-01-XXX-R27-L14	01S	93S	.018	1	1
OEM 4207-26.00M	C10-314-04-01-XXX-R27-L14	01S	93S	.018	1	1
OEM 4209-19.20M	C10-314-04-01-XXX-R27-L14	01S	93S	.018	1	1
OEM 4210-20.00M	C10-314-04-01-XXX-R27-L14	01S	93S	.018	1	1
OEM 4213-19.20M	C10-314-04-01-XXX-R27-L14	01S	93S	.018	1	1
OEM 4214-20.00M	C10-314-04-01-XXX-R27-L14	01S	93S	.018	1	1
OEM 4215-26.00M	C10-314-04-01-XXX-R27-L14	01S	93S	.018	1	1
OEM4 SERIES	C10-314-04-01-XXX-R27-L14	01S	93S	.018	1	1
OEM4200-10.00M	C10-314-04-01-XXX-R27-L14	01S	93S	.018	1	1
OEM4204-10.00M	C10-314-04-01-XXX-R27-L14	01S	93S	.018	1	1
OEM4211-26.00M	C10-314-04-01-XXX-R27-L14	01S	93S	.018	1	1
OEM8 SERIES	C10-314-04-01-XXX-R27-L14	01S	93S	.018	1	1
OHM4 SERIES	C10-314-04-01-XXX-R27-L14	01S	93S	.018	1	1
OHM4 SERIES 5.0V CMOS	C10-314-04-01-XXX-R27-L14	01S	93S	.018	1	1
OSM4 SERIES	C10-314-04-01-XXX-R27-L14	01S	93S	.018	1	1
OSM4 SERIES 5.0 V	C10-314-04-01-XXX-R27-L14	01S	93S	.018	1	1
PACKAGE CO15	C10-608-05-02-XXX-R27-L14	01S	93S	.018	2	1
THM1 SERIES	C10-314-04-01-XXX-R27-L14	01S	93S	.018	1	1
UM1/ UM4/ UM5	C15-02-02-02-XXX-R27-L14	400T4	414T4	.012	4	1
WX	R043-002-02-01-XXX-R27-L14	400T4	414T4	.012	3	1

See last page for other mounting types including low profile options.  
Heat sink socket available to reduce heat and noise. Contact Andon for details.



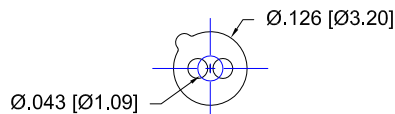
**Fig.1**

Thru-Hole: C10-314-04-01-01S-R27-L14  
Surface Mount: C10-314-04-01-93S-R27-L14



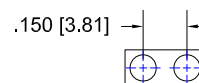
**Fig. 2**

Thru-Hole: C10-608-05-02-01S-R27-L14  
Surface Mount: C10-608-05-02-93S-R27-L14



**Fig.3**

Thru-Hole: R043-02-02-01-400T4-R27-L14  
Surface Mount: R043-02-02-01-414T4-R27-L14



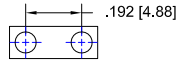
**Fig.4**

Thru-Hole: C15-02-02-02-400T4-R27-L14  
Surface Mount: C15-02-02-02-414T4-R27-L14

## PLETRONICS, INC. Continued

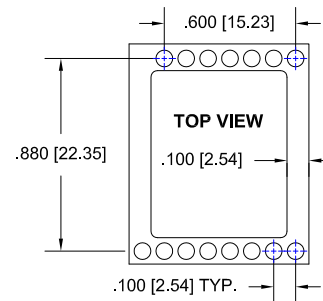
Top View Shown

Units: in [mm]



**FIG. 5**

Thru-Hole: CSP192-02-01-01S-R27-L14  
Surface Mount: CSP192-02-01-93S-R27-L14

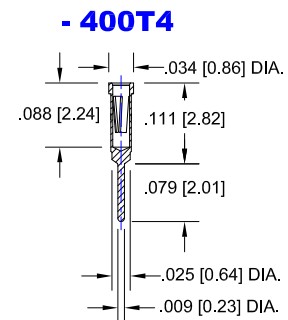
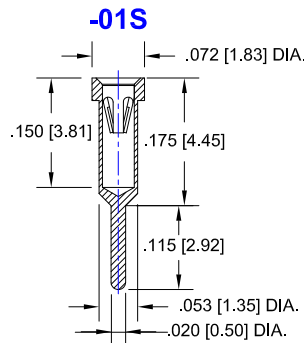
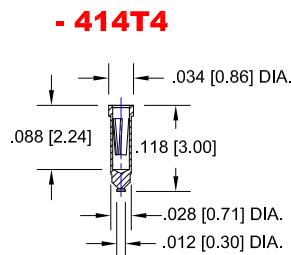
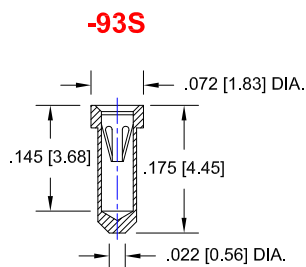


**FIG. 6**

Thru-Hole: CSP880-15-01-01S-R27-L14  
Surface Mount: CSP880-15-01-93S-R27-L14

## Socket Terminal Details

Cross Section View Shown Units: in [mm]



## Technical Information

### Material:

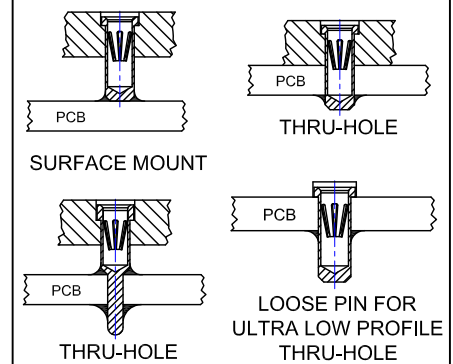
Insulator: Hi-Temp UL 94V-O  
Terminal: Brass, per ASTM-B16  
Contact: BeCu, Per ASTM-B194

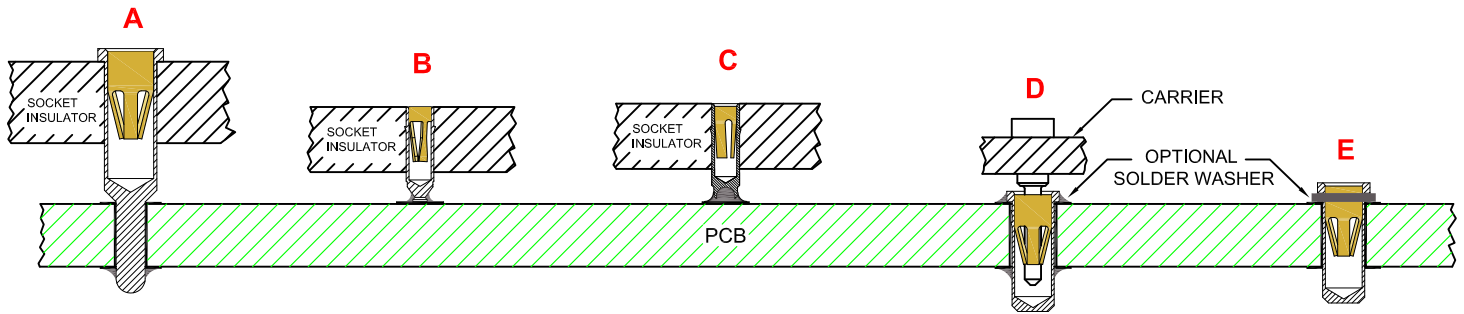
Plating: RoHS COMPLIANT  
R27 TERMINAL: GOLD / CONTACT: GOLD  
OTHER PLATINGS AVAILABLE

### Terminal Acceptance and Forces

Thru Hole Terminals				Surface Mount Terminals			
Thru Hole Terminal	Accepts Pin Diameter	Insertion Force	Withdrawal Force	Surface Mount Terminal	Accepts Pin Diameter	Insertion Force	Withdrawal Force
-01S	Ø.018 [Ø0.46]	9.0 oz Avg.	2.0 oz Min	-93S	Ø.018 [Ø0.46]	9.0 oz Avg.	2.0 oz Min
-400T4	Ø.012 [Ø0.30]	1.1 oz Avg.	0.3 oz Min	-414T4	Ø.012 [Ø0.30]	1.1 oz Avg.	0.3 oz Min

### MOUNTING OPTIONS





**THRU-HOLE  
SOCKET**

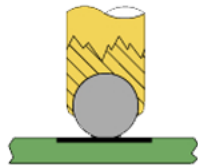
**SMD-SOCKET**

**SMD  
ROLLERBALL®  
SOCKET  
(PATENTED)**

**REMOVABLE  
CARRIER  
WITH ULTRA-LOW  
PROFILE PIN SOCKETS**

**INDIVIDUAL  
ULTRA-LOW PROFILE  
PIN SOCKETS  
(BEFORE SOLDERING)**

**ROLLERBALL®  
SOCKET**



**BEFORE SOLDERING**

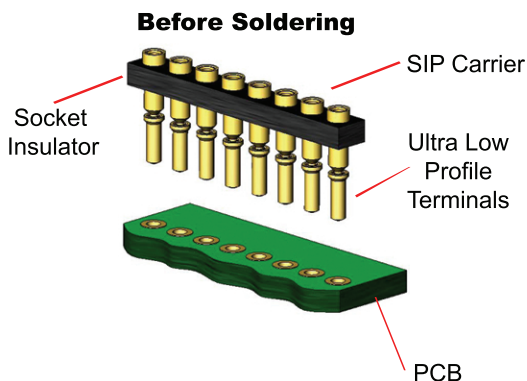
**ROLLERBALL®  
SOCKET**



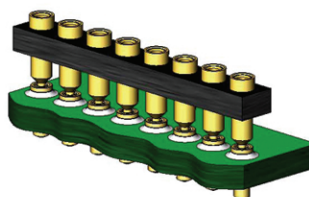
**AFTER SOLDERING**

**A more reliable solder joint for surface mount applications !**

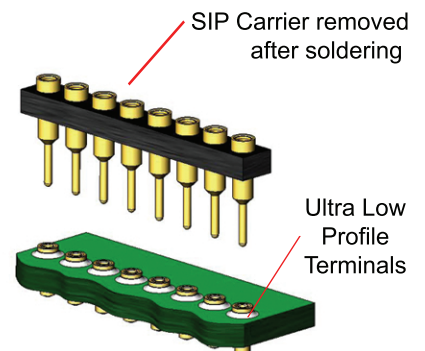
## **ULTRA LOW PROFILE SIP/DIP/PGA CARRIER ASSEMBLY See 'D' above**



**During Soldering**



**After Soldering**



**Available with or without solder washer**