



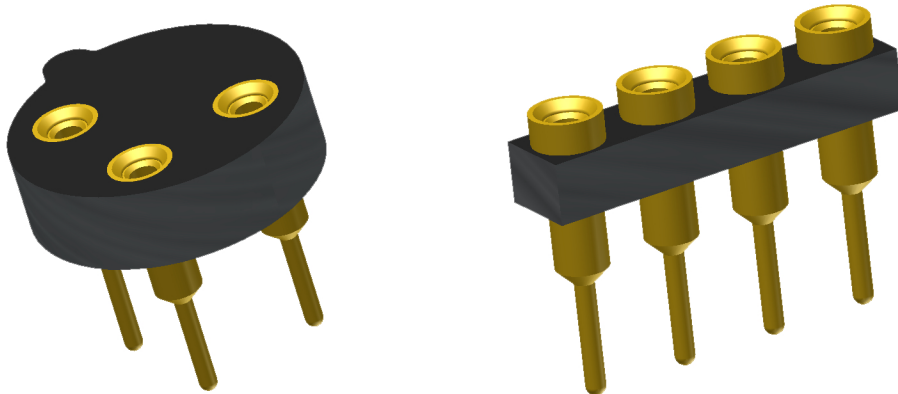
**ANDON**  
INTERCONNECTION SPECIALISTS



RoHS Compliant  
ISO 9001  
Certified

## **HIGH RELIABILITY OPTOELECTRONIC SOCKETS FOR**

**COOPER** Bussmann



***Featuring Andon's Unique Senstac™ Contact***

Cooper Bussman is a trade mark of Cooper Bussman

COOPER BUSSMANN						
COOPER BUSSMANN Model Number	Andon Part Number Replace "XXX" with Terminal Type	Terminal Type		Pin Ø [in]	Figure Number	Page Number
		Thru-Hole	Surface Mount			
SS-5 SERIES	C10-003-02-01-XXX-R27-L14	01P28	93P28	.018	1	1
SS-5F SERIES	C10-003-02-01-XXX-R27-L14	01P28	93P28	.018	1	1
SR-5 SERIES	R200-0402-03T-XXX-R27-L14	01P28	93P28	.018	3	1
SR-5F SERIES	R200-0402-03T-XXX-R27-L14	01P28	93P28	.018	3	1
SR-5H SERIES	R200-0402-03T-XXX-R27-L14	01P28	93P28	.018	3	1
PCB, PCD	C10-003-02-01-XXX-R27-L14	01P28	93P28	.018	1	1
PCH, PCI	C10-003-02-01-XXX-R27-L14	01P28	93P28	.018	1	1
PCF, PCG	C10-005-02-01-XXX-R27-L14	01P28	93P28	.018	2	1
BK/PCS	C10-003-02-01-XXX-R27-L14	400T4	414T4	.012	4	1
PCC/PCE	C10-003-02-01-XXX-R27-L14	400T4	414T4	.012	4	1

Heat sink socket available to reduce heat and noise. Contact Andon for details.

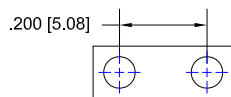


FIG: 1

Thru-Hole: C10-003-02-01-01P28-R27-L14  
Surface Mount: C10-003-02-01-93P28-R27-L14

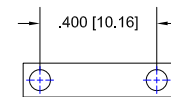


FIG: 2

Thru-Hole: C10-005-02-01-01P28-R27-L14  
Surface Mount: C10-005-02-01-93P28-R27-L14

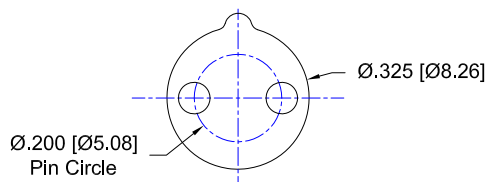


FIG: 3

Thru-Hole: R200-0402-03T-01P28-R27-L14  
Surface Mount: R200-0402-03T-93P28-R27-L14

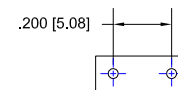


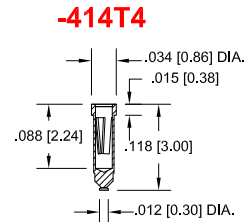
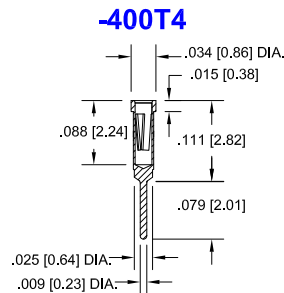
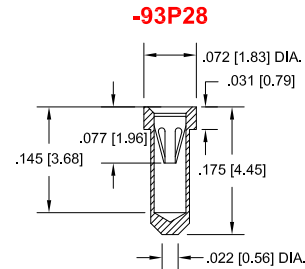
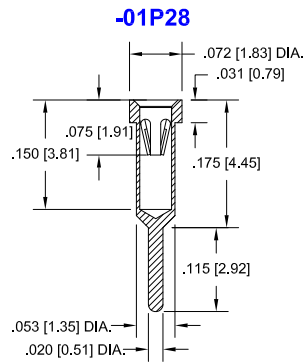
FIG: 4

Thru-Hole: C10-003-02-01-400T4-R27-L14  
Surface Mount: C10-003-02-01-414T4-R27-L14

## COOPER BUSSMANN *Continued*

Top View Shown

Units: in [mm]



### Material:

Insulator: Hi-Temp UL 94V-O  
Terminal: Brass, per ASTM-B16  
Contact: BeCu, Per ASTM-B194

### Plating: RoHS COMPLIANT

R15 TERMINAL: GOLD / CONTACT: GOLD

R17 TERMINAL: TIN / CONTACT: GOLD

OTHER PLATINGS AVAILABLE

Terminal Acceptance and Forces							
Thru Hole Terminals				Surface Mount Terminals			
Thru Hole Terminal	Accepts Pin Diameter	Insertion Force	Withdrawal Force	Surface Mount Terminal	Accepts Pin Diameter	Insertion Force	Withdrawal Force
-400T4	Ø.012 [Ø0.30]	1.1 oz Avg.	0.3 oz Min	-414T4	Ø.012 [Ø0.30]	1.1 oz Avg.	0.3 oz Min
-01P28	Ø.018 [Ø0.46]	7.0 oz Avg.	5.6 oz Min	-93P28	Ø.018 [Ø0.46]	7.0 oz Avg.	5.6 oz Min

### MOUNTING OPTIONS

