



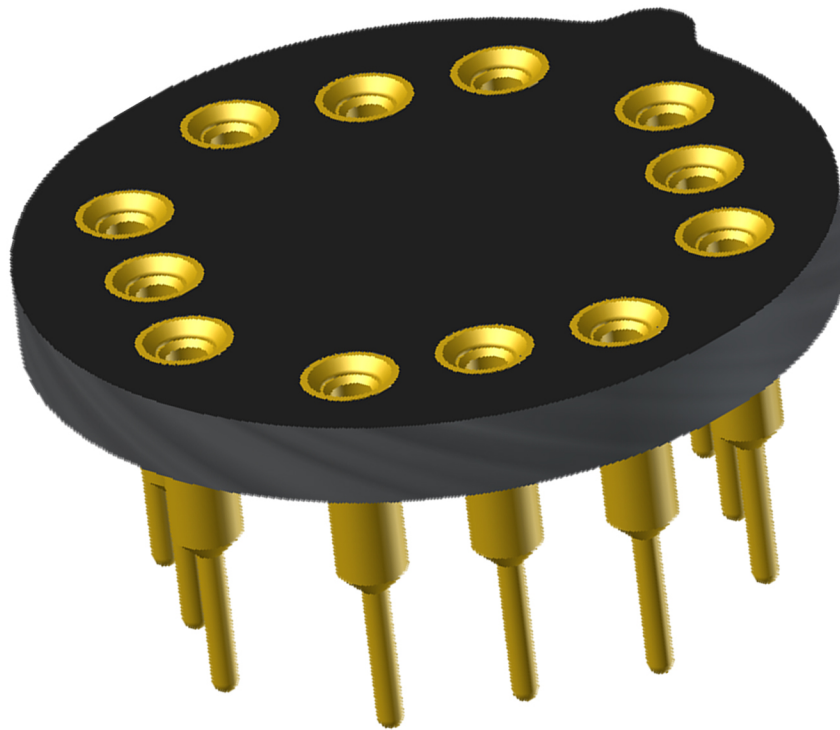
ANDON
INTERCONNECTION SPECIALISTS



RoHS Compliant
ISO 9001
Certified

CONVERTER SOCKETS FOR

MSK
M.S. KENNEDY CORP



***Largest Line of High Reliability Sensor Sockets
with Andon's Unique Senstac™ Contact***

www.andonelect.com or www.andonelectronics.com

M.S KENNEDY CORP						
M.S KENNEDY CORP Model Number	Andon Part Number Replace "XXX" with Terminal Type	Terminal Type		Pin Ø [in]	Figure Number	Page Number
		Thru-Hole	Surface Mount			
BBF2812S	C20-1212-12-01-XXX-R27-L14	436P55	440P55	.060	3	2
96003	CSP700-08-01-XXX-R27-L14	01S	93S	.018	1	1
5962-80013	R400-SP12-02T-XXX-R27-L14	01S	93S	.018	13	4
5962-8508801X	F500-SP09-01-XXX-R27-L14	433E	285E	.040	12	4
5962-87617	R230-1010-02T-XXX-R27-L14	211S	265S	.018	7	3
5962-887010101X	F500-SP09-01-XXX-R27-L14	433E	285E	.040	12	4
5962-887010103X	F500-SP09-01-XXX-R27-L14	433E	285E	.040	12	4
5962-92152	C10-908-08-01-XXX-R27-L14	295V	439V	.030	9	3
5962-93092	C10-818-08-01-XXX-R27-L14	295V	439V	.030	2	2
5962-93093	C10-818-08-01-XXX-R27-L14	295V	439V	.030	2	2
5962-94629	C10-818-08-01-XXX-R27-L14	295V	439V	.030	2	2
5962-94631	C10-818-08-01-XXX-R27-L14	295V	439V	.030	2	2
BBF2803S	C20-1212-12-01-XXX-R27-L14	436P55	440P55	.060	3	2
BBF2805S	C20-1212-12-01-XXX-R27-L14	436P55	440P55	.060	3	2
BBF2815F	C20-1212-12-01-XXX-R27-L14	436P55	440P55	.060	3	2
BFL2805	C20-1212-12-01-XXX-R27-L14	436P55	440P55	.060	3	2
DAC2812D	C10-818-08-01-XXX-R27-L14	295V	439V	.030	2	2
DAC2812DE	C10-818-08-01-XXX-R27-L14	295V	439V	.030	2	2
DAC2812DH	C10-818-08-01-XXX-R27-L14	295V	439V	.030	2	2
DAC2812S	C10-818-08-01-XXX-R27-L14	295V	439V	.030	2	2
DAC2812SE	C10-818-08-01-XXX-R27-L14	295V	439V	.030	2	2
DAC2812SH	C10-818-08-01-XXX-R27-L14	295V	439V	.030	2	2
DAC2815D	C10-818-08-01-XXX-R27-L14	295V	439V	.030	2	2
DAC2815DE	C10-818-08-01-XXX-R27-L14	295V	439V	.030	2	2
DAC2815DH	C10-818-08-01-XXX-R27-L14	295V	439V	.030	2	2
DAC2815S	C10-818-08-01-XXX-R27-L14	295V	439V	.030	2	2
DAC2815SE	C10-818-08-01-XXX-R27-L14	295V	439V	.030	2	2
DAC2815SH	C10-818-08-01-XXX-R27-L14	295V	439V	.030	2	2
DHC2803S	C10-818-08-01-XXX-R27-L14	295V	439V	.030	2	2
DHC2803SE	C10-818-08-01-XXX-R27-L14	295V	439V	.030	2	2
DHC2803SH	C10-818-08-01-XXX-R27-L14	295V	439V	.030	2	2
DHC2805S	C10-818-08-01-XXX-R27-L14	295V	439V	.030	2	2
DHC2805SE	C10-818-08-01-XXX-R27-L14	295V	439V	.030	2	2
DHC2805SH	C10-818-08-01-XXX-R27-L14	295V	439V	.030	2	2
DHD2805S	C10-818-08-01-XXX-R27-L14	295V	439V	.030	2	2
DHD2805SE	C10-818-08-01-XXX-R27-L14	295V	439V	.030	2	2
DHD2805SH	C10-818-08-01-XXX-R27-L14	295V	439V	.030	2	2
EFJ2803	CSP700-08-01-XXX-R27-L14	01S	93S	.018	1	1
EFJ2803E	CSP700-08-01-XXX-R27-L14	01S	93S	.018	1	1
EFJ2803H	CSP700-08-01-XXX-R27-L14	01S	93S	.018	1	1
MSK 450BQ	C10-316-16-01-XXX-R27-L14	01S	93S	.018	10	3
MSK 450BR	C10-316-16-01-XXX-R27-L14	01S	93S	.018	10	3
MSK 450EQ	C10-316-16-01-XXX-R27-L14	01S	93S	.018	10	3
MSK 450ER	C10-316-16-01-XXX-R27-L14	01S	93S	.018	10	3
MSK 450Q	C10-316-16-01-XXX-R27-L14	01S	93S	.018	10	3
MSK0006	R230-1010-02T-XXX-R27-L14	211S	265S	.018	7	3
MSK0006H	R230-1010-02T-XXX-R27-L14	211S	265S	.018	7	3
MSK0021	F500-SP09-01-XXX-R27-L14	433E	285E	.040	12	4
MSK0021B	F500-SP09-01-XXX-R27-L14	433E	285E	.040	12	4
MSK0024 H	R230-0808-01T-XXX-R27-L14	75S	265S	.018	8	3
MSK0032	R400-SP12-02T-XXX-R27-L14	01S	93S	.018	13	4
MSK0032B	R400-SP12-02T-XXX-R27-L14	01S	93S	.018	13	4
MSK0041	R400-SP12-02T-XXX-R27-L14	01S	93S	.018	13	4
MSK0041HRH	R400-SP12-02T-XXX-R27-L14	01S	93S	.018	13	4
MSK0041KRH	R400-SP12-02T-XXX-R27-L14	01S	93S	.018	13	4

Heat sink socket available to reduce heat and noise. Contact Andon for details.

M.S KENNEDY CORP						
M.S KENNEDY CORP Model Number	Andon Part Number Replace "XXX" with Terminal Type	Terminal Type		Pin Ø [in]	Figure Number	Page Number
		Thru-Hole	Surface Mount			
MSK0041RH	R400-SP12-02T-XXX-R27-L14	01S	93S	.018	13	4
MSK032	R400-SP12-02T-XXX-R27-L14	01S	93S	.018	13	4
MSK032B	R400-SP12-02T-XXX-R27-L14	01S	93S	.018	13	4
MSK032E	R400-SP12-02T-XXX-R27-L14	01S	93S	.018	13	4
MSK032S	R400-SP12-02T-XXX-R27-L14	01S	93S	.018	13	4
MSK115	C125-12412-12-01-XXX-R27-L14	433E	285E	.040	5	3
MSK115B	C125-12412-12-01-XXX-R27-L14	433E	285E	.040	5	3
MSK145	C20-006-06-01-XXX-R27-L14	436P55	440P55	.060	4	2
MSK146	C10-908-08-01-XXX-R27-L14	295V	439V	.030	9	3
MSK147	C10-908-08-01-XXX-R27-L14	295V	439V	.030	9	3
MSK155	C10-314-14-01-XXX-R27-L14	01S	93S	.018	6	3
MSK155H	C10-314-14-01-XXX-R27-L14	01S	93S	.018	6	3
MSK161	F500-SP09-01-XXX-R27-L14	433E	285E	.040	12	4
MSK161B	F500-SP09-01-XXX-R27-L14	433E	285E	.040	12	4
MSK181	C10-908-08-01-XXX-R27-L14	295V	439V	.030	9	3
MSK181G	C10-908-08-01-XXX-R27-L14	295V	439V	.030	9	3
MSK182 G	F500-SP09-01-XXX-R27-L14	433E	285E	.040	12	4
MSK198KRHL	620-16-SM-G10-L14-X	-	-	-	11	4
MSK541	F500-SP09-01-XXX-R27-L14	433E	285E	.040	12	4
MSK541B	F500-SP09-01-XXX-R27-L14	433E	285E	.040	12	4
MSK600	C125-12412-12-01-XXX-R27-L14	433E	285E	.040	5	3
MSK600B	C125-12412-12-01-XXX-R27-L14	433E	285E	.040	5	3
MSK601	C125-12412-12-01-XXX-R27-L14	433E	285E	.040	5	3
MSK601B	C125-12412-12-01-XXX-R27-L14	433E	285E	.040	5	3

Heat sink socket available to reduce heat and noise. Contact Andon for details.

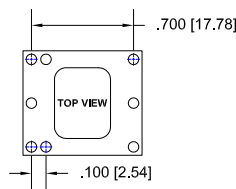


FIG.1

Thru-Hole: CSP700-08-01-01S-R27-L14
Surface Mount: CSP700-08-01-93S-R27-L14

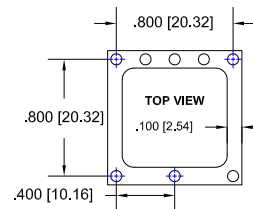


FIG.2

Thru-Hole: C10-818-08-01-295V-R27-L14
Surface Mount: C10-818-08-01-439V-R27-L14

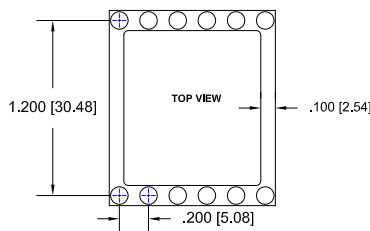


FIG.3

Thru-Hole: C20-1212-12-01-436P55-R27-L14
Surface Mount: C20-1212-12-01-440P55-R27-L14

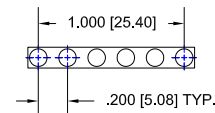


FIG.4

Thru-Hole: (2) C20-006-06-01-436P55-R27-L14
Surface Mount: (2) C20-006-06-01-440P55-R27-L14

M.S KENNEDY CORP *Continued*

Top View Shown

Units: in [mm]

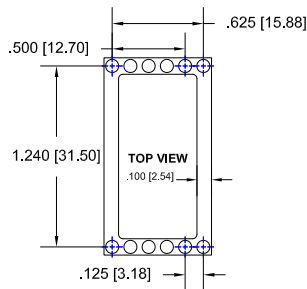


FIG.5

Thru-Hole: C125-12412-12-01-433E-R27-L14
Surface Mount: C125-12412-12-01-285E-R27-L14

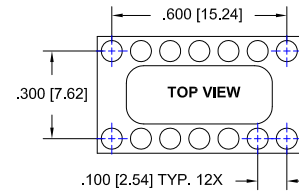


FIG.6

Thru-Hole: C10-314-14-01-01S-R27-L14
Surface Mount: C10-314-14-01-93S-R27-L14

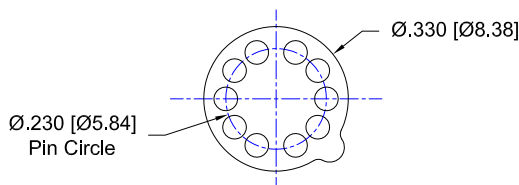


FIG.7

Thru-Hole: R230-1010-02T-211S-R27-L14
Surface Mount: R230-1010-02T-265S-R27-L14

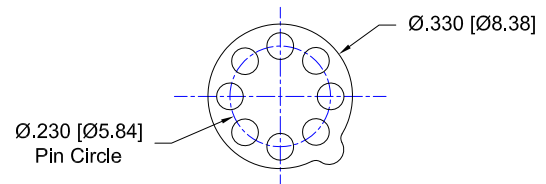


FIG.8

Thru-Hole: R230-0808-01T-75S-R27-L14
Surface Mount: R230-0808-01T-265S-R27-L14

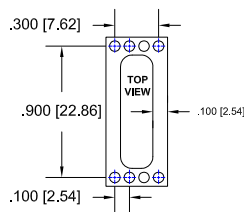


FIG.9

Thru-Hole: C10-908-08-01-295V-R27-L14
Surface Mount: C10-908-08-01-439V-R27-L14

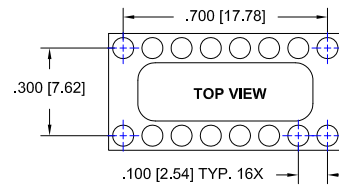


FIG.10

Thru-Hole: C10-316-16-01-01S-R27-L14
Surface Mount: C10-316-16-01-93S-R27-L14

M.S KENNEDY CORP *Continued*

Top View Shown

Units: in [mm]

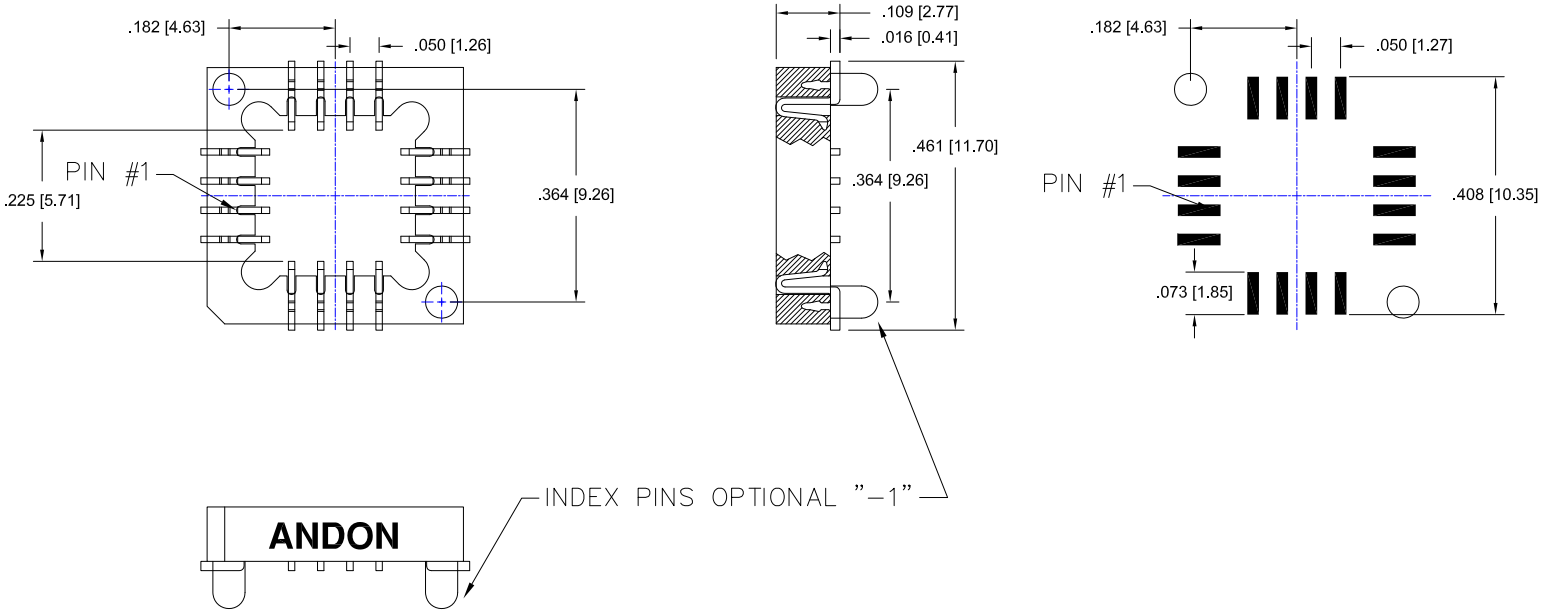


FIG.11

Surface Mount: 620-16-SM-G10-L14-X

Contact Plating = Gold

Replace "-X" with "-1" for index pins or "-0" for none

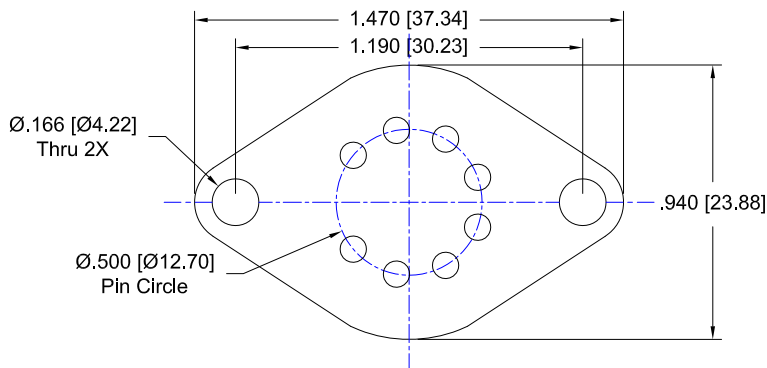


FIG.12

Thru-Hole: F500-SP09-01-433E-R27-L14
Surface Mount: F500-SP09-01-285E-R27-L14

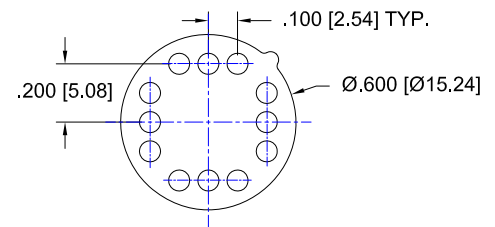


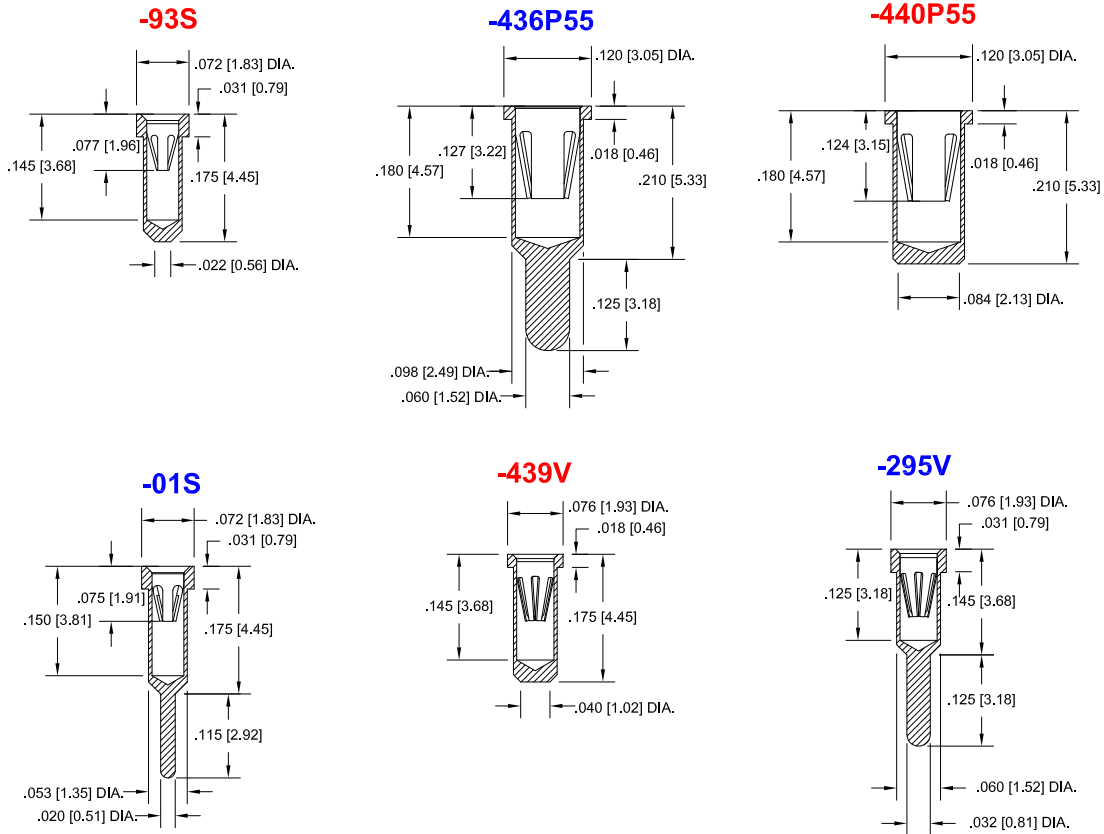
FIG.13

Thru-Hole: R400-SP12-02T-01S-R27-L14
Surface Mount: R400-SP12-02T-93S-R27-L14

M.S KENNEDY CORP Continued

Top View Shown

Units: in [mm]



Material:

Insulator: Hi-Temp UL 94V-0
 Terminal: Brass, per ASTM-B16
 Contact: BeCu, Per ASTM-B194

Plating: RoHS COMPLIANT

R15 TERMINAL: GOLD / CONTACT: GOLD
 R17 TERMINAL: TIN / CONTACT: GOLD
 OTHER PLATINGS AVAILABLE

Terminal Acceptance and Forces							
Thru Hole Terminals				Surface Mount Terminals			
Thru Hole Terminal	Accepts Pin Diameter	Insertion Force	Withdrawal Force	Surface Mount Terminal	Accepts Pin Diameter	Insertion Force	Withdrawal Force
-01S	Ø.018 [Ø0.46]	9.0 oz Avg.	2.0 oz Min	-93S	Ø.018 [Ø0.46]	9.0 oz Avg.	2.0 oz Min
-295V	Ø.018 [Ø0.46]	9.0 oz Avg.	2.0 oz Min	-439V	Ø.018 [Ø0.46]	9.0 oz Avg.	2.0 oz Min
-436P55	Ø.060 [Ø1.52]	15.5 oz Avg.	2.1 oz Min	-440P55	Ø.060 [Ø1.52]	15.5 oz Avg.	2.1 oz Min

