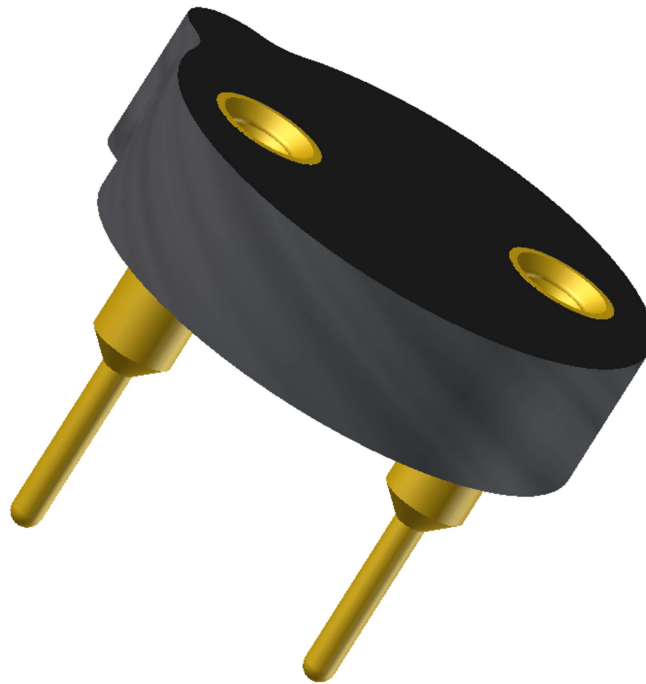




High-Reliability Opto-Electronic Sockets for sglux GmbH

sglux UV SENSORS



Featuring Andon's Unique SenstacTM Contact

sglux						
sglux Package Type	Andon Electronics Part Number <i>Replace "XXX" with Terminal Style</i>	Terminal Style		Pin Ø [in]	Page Number	Figure Number
		Thru-Hole	Surface Mount			
GaP photodiode	R200-0402-01T-XXX-R27-L14	01S	93S	.018	4	2
SG01D-18	R100-0402-03T-XXX-R27-L14	75S	384S	.018	4	1
SG01D-18D	R100-0402-03T-XXX-R27-L14	75S	384S	.018	4	1
SG01D-18ISO90	R100-0403-01T-XXX-R27-L14	75S	384S	.018	4	3
SG01D-18S	R100-0402-03T-XXX-R27-L14	75S	384S	.018	4	1
SG01D-5	R200-0402-01T-XXX-R27-L14	01S	93S	.018	4	2
SG01D-5ISO90	R200-0403-01T-XXX-R27-L14	01S	93S	.018	4	4
SG01D-5Lens	R200-0402-01T-XXX-R27-L14	01S	93S	.018	4	2
SG01D-A18	R100-0402-03T-XXX-R27-L14	75S	384S	.018	4	1
SG01D-A18ISO90	R100-0403-01T-XXX-R27-L14	75S	384S	.018	4	3
SG01D-A5	R200-0402-01T-XXX-R27-L14	01S	93S	.018	4	2
SG01D-B5	R200-0402-01T-XXX-R27-L14	01S	93S	.018	4	2
SG01D-BC18	R100-0402-03T-XXX-R27-L14	75S	384S	.018	4	1
SG01D-BC18ISO90	R100-0403-01T-XXX-R27-L14	75S	384S	.018	4	3
SG01D-C18	R100-0402-03T-XXX-R27-L14	75S	384S	.018	4	1
SG01D-C18D	R100-0402-03T-XXX-R27-L14	75S	384S	.018	4	1
SG01D-C18ISO90	R100-0403-01T-XXX-R27-L14	75S	384S	.018	4	3
SG01D-C5D	R200-0402-01T-XXX-R27-L14	01S	93S	.018	4	2
SG01D-C5ISO90	R200-0403-01T-XXX-R27-L14	01S	93S	.018	4	4
SG01D-C5Lens	R200-0402-01T-XXX-R27-L14	01S	93S	.018	4	2
SG01F-5	R200-0402-01T-XXX-R27-L14	01S	93S	.018	4	2
SG01F-5ISO90	R200-0403-01T-XXX-R27-L14	01S	93S	.018	4	4
SG01F-C5	R200-0402-01T-XXX-R27-L14	01S	93S	.018	4	2
SG01L-18	R100-0402-03T-XXX-R27-L14	75S	384S	.018	4	1
SG01L-18ISO90	R100-0403-01T-XXX-R27-L14	75S	384S	.018	4	3
SG01L-18S	R100-0402-03T-XXX-R27-L14	75S	384S	.018	4	1
SG01L-5	R200-0402-01T-XXX-R27-L14	01S	93S	.018	4	2
SG01L-5ISO90	R200-0403-01T-XXX-R27-L14	01S	93S	.018	4	4
SG01L-5Lens	R200-0402-01T-XXX-R27-L14	01S	93S	.018	4	2
SG01L-A18	R100-0402-03T-XXX-R27-L14	75S	384S	.018	4	1
SG01L-A5	R200-0402-01T-XXX-R27-L14	01S	93S	.018	4	2
SG01L-BC18	R100-0402-03T-XXX-R27-L14	75S	384S	.018	4	1
SG01L-BC5	R200-0402-01T-XXX-R27-L14	01S	93S	.018	4	2
SG01L-C18	R100-0402-03T-XXX-R27-L14	75S	384S	.018	4	1
SG01L-C5	R200-0402-01T-XXX-R27-L14	01S	93S	.018	4	2
SG01L-C5D	R200-0402-01T-XXX-R27-L14	01S	93S	.018	4	2
SG01L-E5	R200-0402-01T-XXX-R27-L14	01S	93S	.018	4	2
SG01L-E5D	R200-0402-01T-XXX-R27-L14	01S	93S	.018	4	2
SG01M-18	R100-0402-03T-XXX-R27-L14	75S	384S	.018	4	1
SG01M-18ISO90	R100-0403-01T-XXX-R27-L14	75S	384S	.018	4	3
SG01M-18S	R100-0402-03T-XXX-R27-L14	75S	384S	.018	4	1
SG01M-5	R200-0402-01T-XXX-R27-L14	01S	93S	.018	4	2
SG01M-5Lens	R200-0402-01T-XXX-R27-L14	01S	93S	.018	4	2
SG01M6H-18	R100-0402-03T-XXX-R27-L14	75S	384S	.018	4	1
SG01M6H-5	R200-0402-01T-XXX-R27-L14	01S	93S	.018	4	2
SG01M-A18	R100-0402-03T-XXX-R27-L14	75S	384S	.018	4	1
SG01M-A5	R200-0402-01T-XXX-R27-L14	01S	93S	.018	4	2
SG01M-BC18	R100-0402-03T-XXX-R27-L14	75S	384S	.018	4	1
SG01M-BC5	R200-0402-01T-XXX-R27-L14	01S	93S	.018	4	2

See last page for other mounting types including low profile options.
Heat sink socket available to reduce heat and noise. Contact Andon for details.

sglux						
sglux Package Type	Andon Electronics Part Number <i>Replace "XXX" with Terminal Style</i>	Terminal Style		Pin Ø [in]	Page Number	Figure Number
		Thru-Hole	Surface Mount			
SG01M-C18	R100-0402-03T-XXX-R27-L14	75S	384S	.018	4	1
SG01M-C18ISO90	R100-0403-01T-XXX-R27-L14	75S	384S	.018	4	3
SG01M-C5	R200-0402-01T-XXX-R27-L14	01S	93S	.018	4	2
SG01M-C5D	R200-0402-01T-XXX-R27-L14	01S	93S	.018	4	2
SG01M-C5ISO90	R200-0403-01T-XXX-R27-L14	01S	93S	.018	4	4
SG01Q-5	R200-SP05-01T-XXX-R27-L14	01S	93S	.018	5	7
SG01S-18	R100-0402-03T-XXX-R27-L14	75S	384S	.018	4	1
SG01S-18D	R100-0402-03T-XXX-R27-L14	75S	384S	.018	4	1
SG01S-18ISO90	R100-0403-01T-XXX-R27-L14	75S	384S	.018	4	3
SG01S-18S	R100-0402-03T-XXX-R27-L14	75S	384S	.018	4	1
SG01S-5	R200-0402-01T-XXX-R27-L14	01S	93S	.018	4	2
SG01S-A18	R100-0402-03T-XXX-R27-L14	75S	384S	.018	4	1
SG01S-A5	R200-0402-01T-XXX-R27-L14	01S	93S	.018	4	2
SG01S-BC18	R100-0402-03T-XXX-R27-L14	75S	384S	.018	4	1
SG01S-C18	R100-0402-03T-XXX-R27-L14	75S	384S	.018	4	1
SG01S-C18D	R100-0402-03T-XXX-R27-L14	75S	384S	.018	4	1
SG01S-C18ISO90	R100-0403-01T-XXX-R27-L14	75S	384S	.018	4	3
SG01S-C18ISO90D	R100-0402-03T-XXX-R27-L14	75S	384S	.018	4	1
SG01S-C18-LED	R100-0402-03T-XXX-R27-L14	75S	384S	.018	4	1
SG01S-C5	R200-0402-01T-XXX-R27-L14	01S	93S	.018	4	2
SG01-TANDEM-XL	R200-0404-01T-XXX-R27-S14	01S	93S	.018	5	6
SG01XL-5	R200-0402-01T-XXX-R27-L14	01S	93S	.018	4	2
SG01XL-5ISO90	R200-0403-01T-XXX-R27-L14	01S	93S	.018	4	4
SG01XL-A5	R200-0402-01T-XXX-R27-L14	01S	93S	.018	4	2
SG01XL-BC5	R200-0402-01T-XXX-R27-L14	01S	93S	.018	4	2
SG01XL-C5	R200-0402-01T-XXX-R27-L14	01S	93S	.018	4	2
SG02-APD-D5	R200-0403-01T-XXX-R27-L14	01S	93S	.018	4	4
SG03R01-5	R200-0402-01T-XXX-R27-L14	01S	93S	.018	4	2
SG03R05-18	R100-0402-03T-XXX-R27-L14	75S	384S	.018	4	1
SG03R05-5	R200-0402-01T-XXX-R27-L14	01S	93S	.018	4	2
SG03R10-5	R200-0402-01T-XXX-R27-L14	01S	93S	.018	4	2
SG03R20-5	R200-0402-01T-XXX-R27-L14	01S	93S	.018	4	2
SG03R20-5_MgF	R200-0402-01T-XXX-R27-L14	01S	93S	.018	4	2
SG03R80-5	R200-0402-01T-XXX-R27-L14	01S	93S	.018	4	2
SG04-INGAP-365-0.5	R200-0403-01T-XXX-R27-L14	01S	93S	.018	4	4
SG04-INGAP-440-0.5	R200-0403-01T-XXX-R27-L14	01S	93S	.018	4	4
SG04-INGAP-550-0.5	R200-0403-01T-XXX-R27-L14	01S	93S	.018	4	4
SG04-INGAP-640-0.5	R200-0403-01T-XXX-R27-L14	01S	93S	.018	4	4
SG04-INGAP-640-5.9	R200-0403-01T-XXX-R27-L14	01S	93S	.018	4	4
TOCON_A4	R200-0403-01T-XXX-R27-L14	01S	93S	.018	4	4
TOCON_A5	R200-0403-01T-XXX-R27-L14	01S	93S	.018	4	4
TOCON_A6	R200-0403-01T-XXX-R27-L14	01S	93S	.018	4	4
TOCON_A7	R200-0403-01T-XXX-R27-L14	01S	93S	.018	4	4
TOCON_A8	R200-0403-01T-XXX-R27-L14	01S	93S	.018	4	4
TOCON_A9	R200-0403-01T-XXX-R27-L14	01S	93S	.018	4	4
TOCON_ABC1	R200-0403-01T-XXX-R27-L14	01S	93S	.018	4	4
TOCON_ABC10	R200-0403-01T-XXX-R27-L14	01S	93S	.018	4	4
TOCON_ABC2	R200-0403-01T-XXX-R27-L14	01S	93S	.018	4	4

See last page for other mounting types including low profile options.
Heat sink socket available to reduce heat and noise. Contact Andon for details.

sglux						
sglux Package Type	Andon Electronics Part Number <i>Replace "XXX" with Terminal Style</i>	Terminal Style		Pin Ø [in]	Page Number	Figure Number
		Thru-Hole	Surface Mount			
TOCON_ABC3	R200-0403-01T-XXX-R27-L14	01S	93S	.018	4	4
TOCON_ABC4	R200-0403-01T-XXX-R27-L14	01S	93S	.018	4	4
TOCON_ABC5	R200-0403-01T-XXX-R27-L14	01S	93S	.018	4	4
TOCON_ABC6	R200-0403-01T-XXX-R27-L14	01S	93S	.018	4	4
TOCON_ABC7	R200-0403-01T-XXX-R27-L14	01S	93S	.018	4	4
TOCON_ABC8	R200-0403-01T-XXX-R27-L14	01S	93S	.018	4	4
TOCON_ABC9	R200-0403-01T-XXX-R27-L14	01S	93S	.018	4	4
TOCON_B4	R200-0403-01T-XXX-R27-L14	01S	93S	.018	4	4
TOCON_B5	R200-0403-01T-XXX-R27-L14	01S	93S	.018	4	4
TOCON_B6	R200-0403-01T-XXX-R27-L14	01S	93S	.018	4	4
TOCON_BLUE4	R200-0403-01T-XXX-R27-L14	01S	93S	.018	4	4
TOCON_BLUE5	R200-0403-01T-XXX-R27-L14	01S	93S	.018	4	4
TOCON_BLUE6	R200-0403-01T-XXX-R27-L14	01S	93S	.018	4	4
TOCON_BLUE7	R200-0403-01T-XXX-R27-L14	01S	93S	.018	4	4
TOCON_BLUE8	R200-0403-01T-XXX-R27-L14	01S	93S	.018	4	4
TOCON_BLUE9	R200-0403-01T-XXX-R27-L14	01S	93S	.018	4	4
TOCON_C1	R200-0403-01T-XXX-R27-L14	01S	93S	.018	4	4
TOCON_C2	R200-0403-01T-XXX-R27-L14	01S	93S	.018	4	4
TOCON_C3	R200-0403-01T-XXX-R27-L14	01S	93S	.018	4	4
TOCON_C4	R200-0403-01T-XXX-R27-L14	01S	93S	.018	4	4
TOCON_C5	R200-0403-01T-XXX-R27-L14	01S	93S	.018	4	4
TOCON_C6	R200-0403-01T-XXX-R27-L14	01S	93S	.018	4	4
TOCON_C7	R200-0403-01T-XXX-R27-L14	01S	93S	.018	4	4
TOCON_C8	R200-0403-01T-XXX-R27-L14	01S	93S	.018	4	4
TOCON_C9	R200-0403-01T-XXX-R27-L14	01S	93S	.018	4	4
TOCON_E_OEM	R200-0403-01T-XXX-R27-L14	01S	93S	.018	4	4
TOCON_E1	R200-0403-01T-XXX-R27-L14	01S	93S	.018	4	4
TOCON_E2	R200-0403-01T-XXX-R27-L14	01S	93S	.018	4	4
TOCON_F310-A2	R200-0403-01T-XXX-R27-L14	01S	93S	.018	4	4
TOCON_F510	R200-0403-01T-XXX-R27-L14	01S	93S	.018	4	4
TOCON_GAP4	R200-0403-01T-XXX-R27-L14	01S	93S	.018	4	4
TOCON_GAP5	R200-0403-01T-XXX-R27-L14	01S	93S	.018	4	4
TOCON_GAP6	R200-0403-01T-XXX-R27-L14	01S	93S	.018	4	4
TOCON_GAP7	R200-0403-01T-XXX-R27-L14	01S	93S	.018	4	4
TOCON_GAP8	R200-0403-01T-XXX-R27-L14	01S	93S	.018	4	4
TOCON_GAP9	R200-0403-01T-XXX-R27-L14	01S	93S	.018	4	4
TOCON_N1F	R230-0804-02T-XXX-R27-L14	211S	384S	.018	5	5
TOCON_NC1F	R230-0804-02T-XXX-R27-L14	211S	384S	.018	5	5
TOCON_SI1	R200-0403-01T-XXX-R27-L14	01S	93S	.018	4	4
TOCON_SI10	R200-0403-01T-XXX-R27-L14	01S	93S	.018	4	4
TOCON_SI7	R200-0403-01T-XXX-R27-L14	01S	93S	.018	4	4

See last page for other mounting types including low profile options.
Heat sink socket available to reduce heat and noise. Contact Andon for details.

Socket Blueprint Details

Top View Shown

Units: in [mm]

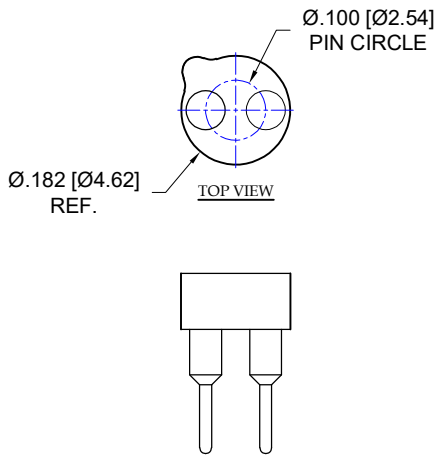


FIG: 1
Thru-Hole: R100-0402-03T-75S-R27-L14
Surface Mount: R100-0402-03T-384S-R27-L14

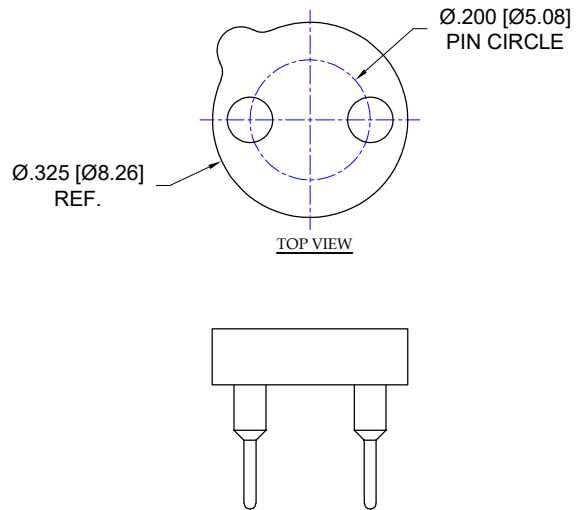


FIG: 2
Thru-Hole: R200-0402-01T-01S-R27-L14
Surface Mount: R200-0402-01T-93S-R27-L14

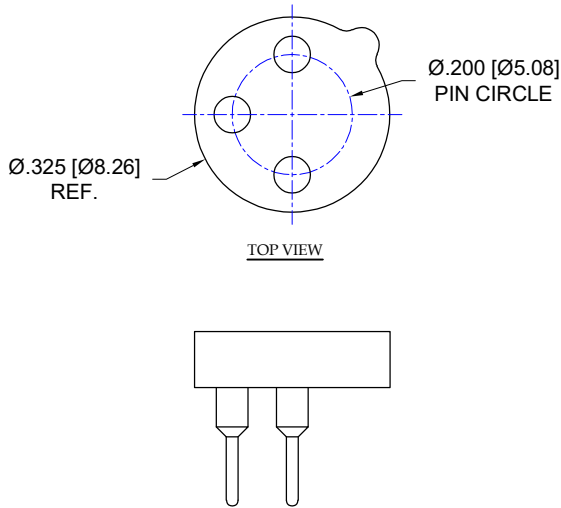


FIG: 3
Thru-Hole: R200-0403-01T-01S-R27-L14
Surface Mount: R200-0403-01T-93S-R27-L14

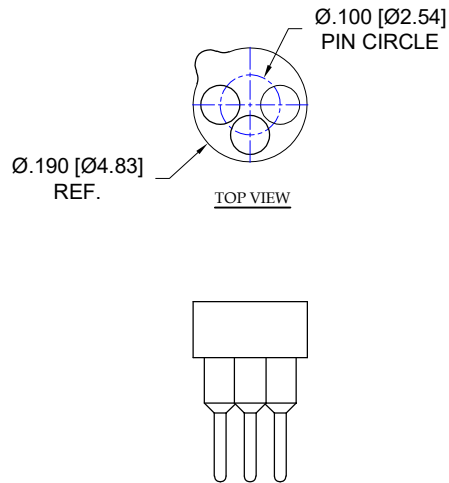


FIG: 4
Thru-Hole: R100-0403-01T-75S-R27-L14
Surface Mount: R100-0403-01T-384S-R27-L14

Socket Blueprint Details

Top View Shown

Units: in [mm]

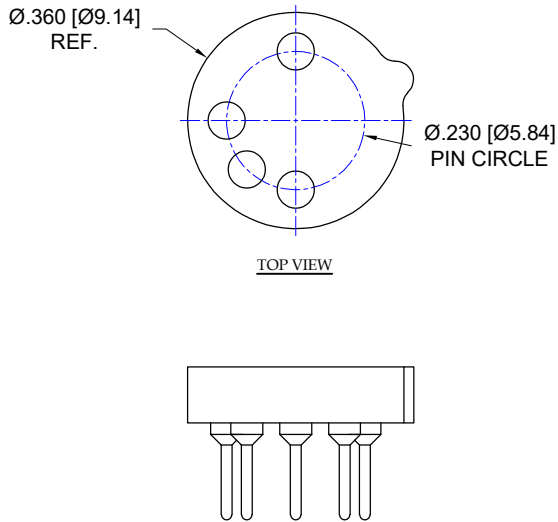


FIG: 5

Thru-Hole: R230-0804-02T-211S-R27-L14
Surface Mount: R230-0804-02T-384S-R27-L14

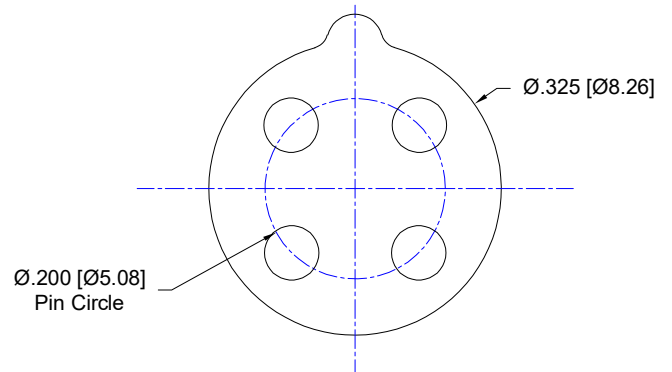


FIG: 6

Thru-Hole: R200-0404-01T-01S-R27-S14
Surface Mount: R200-0404-01T-93S-R27-S14

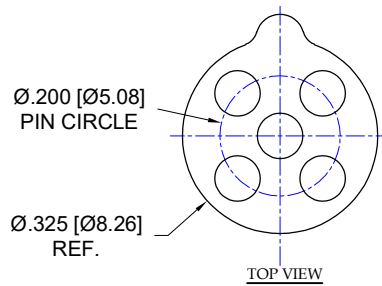
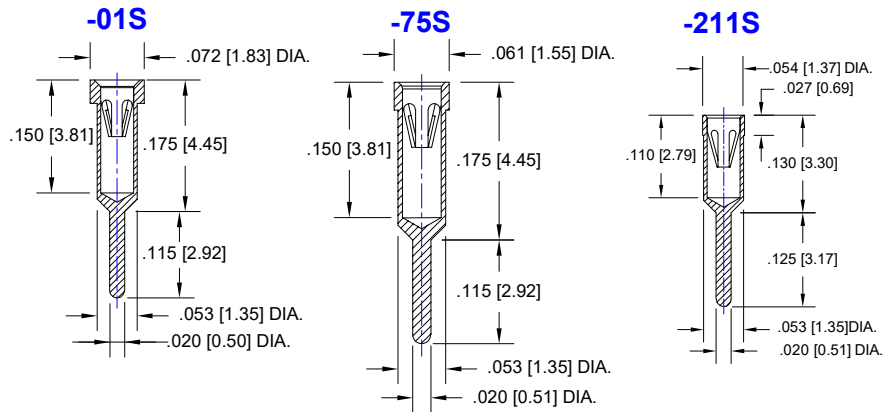


FIG: 7

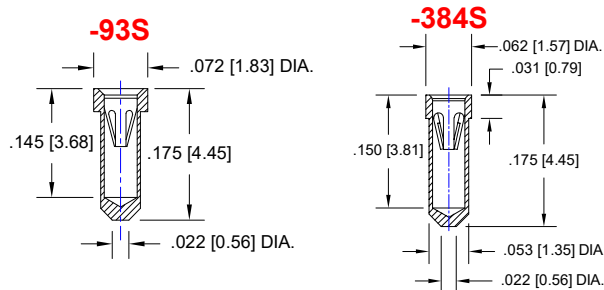
Thru-Hole: R200-SP05-01T-01S-R27-L14
Surface Mount: R200-SP05-01T-93S-R27-L14

Cross Section View Shown
Units: in [mm]

THRU HOLE OPTION



SURFACE MOUNT OPTION



Material:

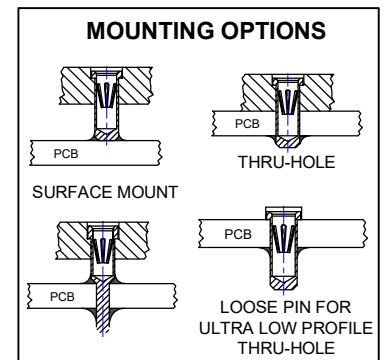
Insulator: Hi-Temp UL 94V-O
 Terminal: Brass, per ASTM-B16
 Contact: BeCu, Per ASTM-B194

Plating: RoHS COMPLIANT

R27 TERMINAL: GOLD / CONTACT: GOLD
R17 TERMINAL: TIN / CONTACT: GOLD
OTHER PLATINGS AVAILABLE

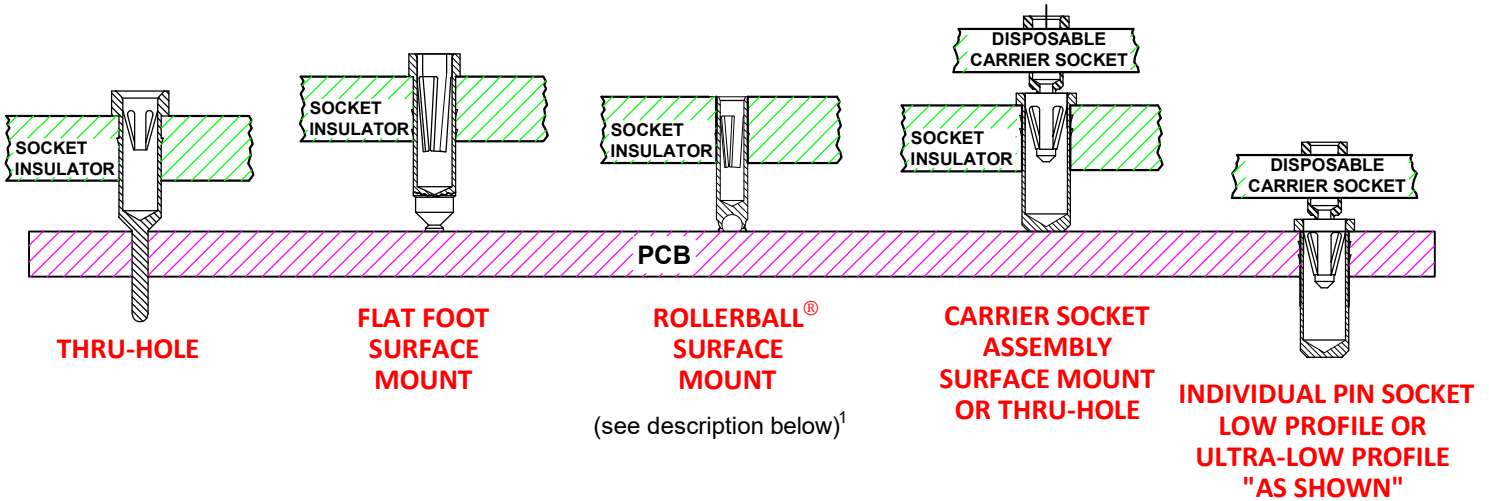
Terminal Acceptance and Forces

Thru Hole Socket Terminals				Surface Mount Socket Terminals			
Thru Hole Terminal	Accepts Pin Diameter	Insertion Force	Withdrawal Force	Surface Mount Terminal	Accepts Pin Diameter	Insertion Force	Withdrawal Force
-01S	Ø.018 [Ø0.46]	9.0 oz Avg.	2.0 oz Min	-93S	Ø.018 [Ø0.46]	9.0 oz Avg.	2.0 oz Min
-75S	Ø.018 [Ø0.46]	9.0 oz Avg.	2.0 oz Min	-384S	Ø.018 [Ø0.46]	9.0 oz Avg.	2.0 oz Min
-211S	Ø.018 [Ø0.46]	9.0 oz Avg.	2.0 oz Min				



Andon Proprietary Information
RoHS Compliant

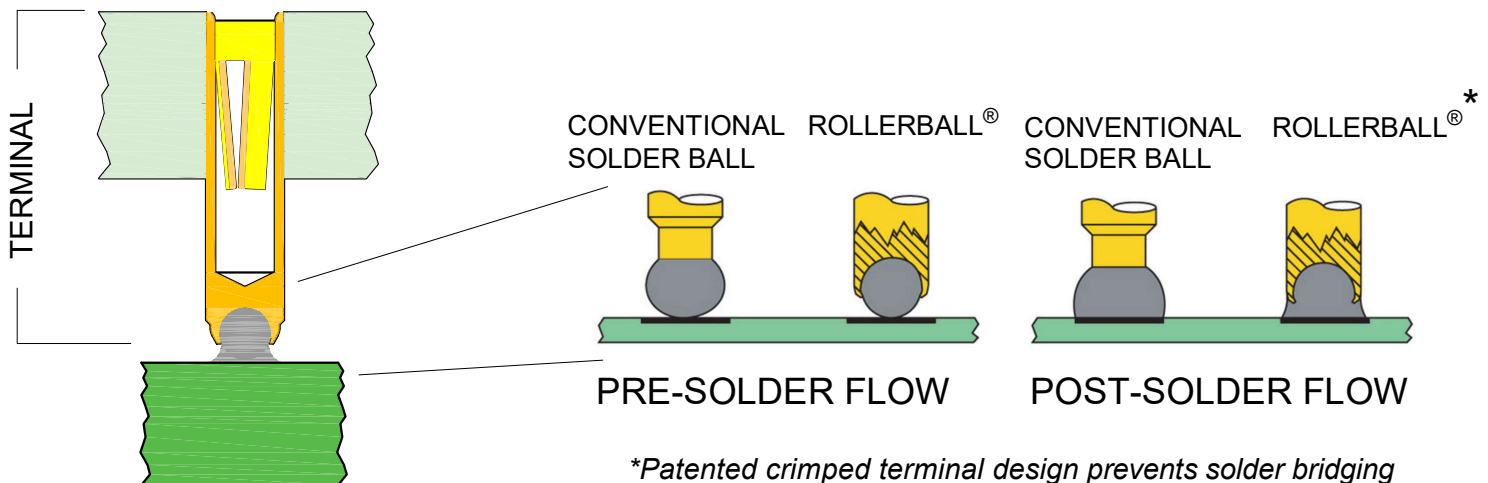
*Sockets are not drawn to scale *sglux GmbH* 05/14/2026



¹Andon's patented Rollerball[®] socket terminal option provides more accurate soldering, a stronger connection, and improved electrical connectivity - especially under shock and vibration - than other solder ball terminal designs. Better yet, it can enable you to avoid expensive rework and scrap - especially with larger PCBs where coplanarity is an inherent challenge.

The bottom of these terminals has a radiused hole, to prevent gas entrapment. The terminal is crimped over the solder ball beyond its hemisphere, encapsulating it - leaving just enough of the solder ball exposed to provide sufficient solder without the solder bridging common in conventional solder ball terminal designs.

With this unique design, the critical distance between the terminal and the PC board pad is typically reduced from .036"-.040" to .018"-.022". As such, the solder becomes part of the "anchor" cross-section - providing additional mechanical strength to the connection, as well as improved electrical connectivity. Because it also provides controlled dispersion of solder, this encapsulated solder ball reduces the risk of solder bridging inherent in conventional solder ball terminal designs.



For fast, accurate placement of SIP sockets and ultra-low profile terminals

Phase 1:
Receive Carrier Assemblies designed to your pin layout.



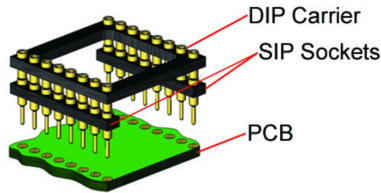
Phase 2:
Place carrier assemblies onto PCB; run through your soldering process.



Phase 3:
Remove carrier and plug in your device; discard carrier or send back to our factory for reloading.

DIP

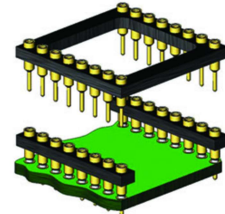
Before Soldering



During Soldering

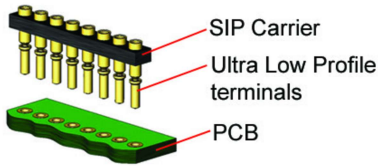


After Soldering

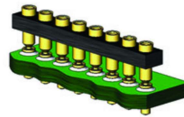


ULTRA-LOW PROFILE SIP

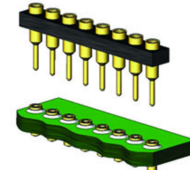
Before Soldering



During Soldering

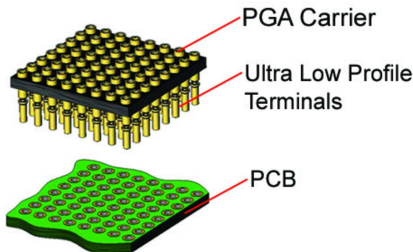


After Soldering

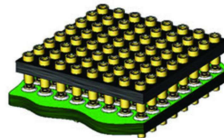


ULTRA-LOW PROFILE PGA

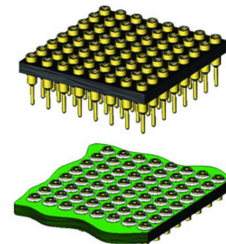
Before Soldering



During Soldering

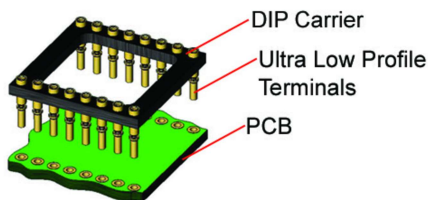


After Soldering

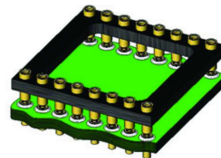


ULTRA LOW PROFILE DIP

Before Soldering



During Soldering



After Soldering

