

PRO-WAVE ELECTRONICS CORPORATION						
Pro-Wave Electronics Corporation Model Number	Andon Part Number Replace "XXX" with Terminal Type	Terminal Type		Pin Ø [in]	Figure Number	Page Number
		Thru-Hole	Surface Mount			
200GE180	R398-0402-01T-XXX-R27-L14	436P55	440P55	.059	153	2
235AC130	R330-0402-01T-XXX-R27-L14	433E	285E	.040	135	1
250ST/R160	R395-0402-01T-XXX-R27-L14	433E	285E	.040	151	2
250ST/R180	R465-0402-01T-XXX-R27-L14	436P55	440P55	.059	175	2
250ST/R240	R465-0402-01T-XXX-R27-L14	436P55	440P55	.059	175	2
328ET/R250	R395-0402-01T-XXX-R27-L14	433E	285E	.040	151	2
328ST/R160	R395-0402-01T-XXX-R27-L14	433E	285E	.040	151	2
328ST/R180	R465-0402-01T-XXX-R27-L14	436P55	440P55	.059	175	2
400EP14D	R210-0402-01T-XXX-R27-L14	01S	93S	.018	88	1
400EP18A	R200-0402-01T-XXX-R27-L14	01S	93S	.018	52	1
400EP18D	R200-0402-01T-XXX-R27-L14	01S	93S	.018	52	1
400EP250	R453-0402-01T-XXX-R27-L14	436P55	440P55	.059	174	2
400ET/R080	R200-0402-01T-XXX-R27-L14	01S	93S	.018	52	1
400ET/R180	R395-0402-01T-XXX-R27-L14	433E	285E	.040	151	2
400ET/R250	R395-0402-01T-XXX-R27-L14	433E	285E	.040	151	2
400PT/120	R330-0402-01T-XXX-R27-L14	433E	285E	.040	135	1
400PT/160	R395-0402-01T-XXX-R27-L14	433E	385E	.040	151	2
400ST/R100	R200-0402-01T-XXX-R27-L14	01S	93S	.018	52	1
400ST/R120	R330-0402-01T-XXX-R27-L14	433E	285E	.040	135	1
400ST/R160	R395-0402-01T-XXX-R27-L14	433E	285E	.040	151	2
400WB160	R395-0402-01T-XXX-R27-L14	433E	285E	.040	151	2
480EP900	F436-SP02-01-XXX-R27-L14	436P55	440P55	.059	F01	2
500MB120	405-00627-02-XXX-R15-L14	433E	285E	.040	S02	3

Top View Shown
Units: in [mm]

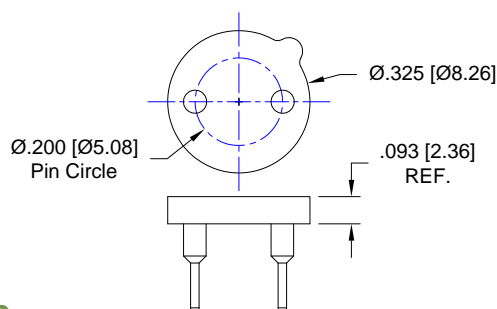


Fig. 52

Thru-Hole: R200-0402-01T-01S-R27-L14
Surface Mount: R200-0402-01T-93S-R27-L14

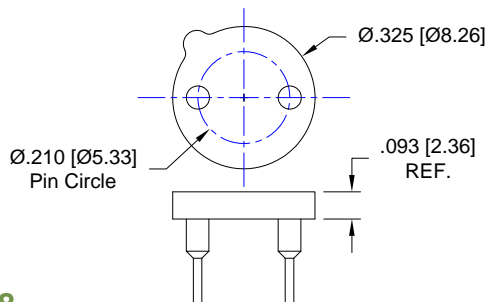
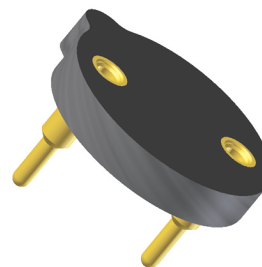


Fig. 88

Thru-Hole: R210-0402-01T-01S-R27-L14
Surface Mount: R210-0402-01T-93S-R27-L14

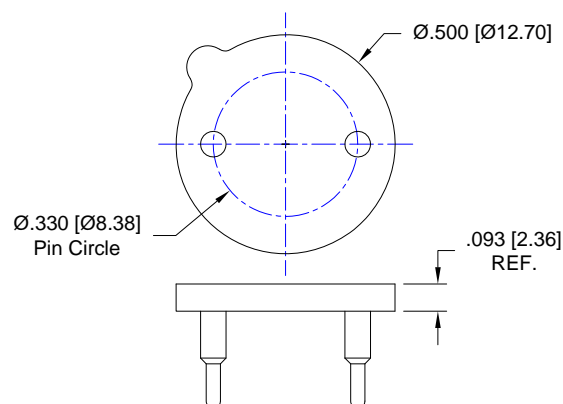


Fig. 135

Thru-Hole: R330-0402-01T-433E-R27-L14
Surface Mount: R330-0402-01T-285E-R27-L14

PRO-WAVE SOCKETS Continued

Top View Shown

Units: in [mm]

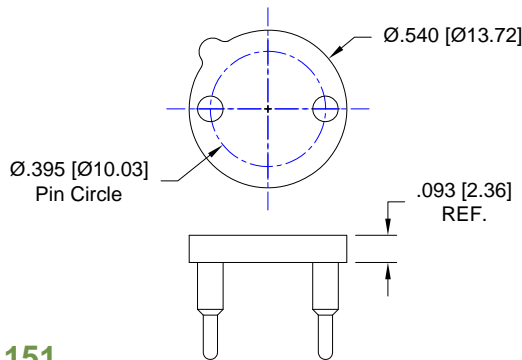


Fig. 151

Thru-Hole: R395-0402-01T-**433E**-R27-L14
Surface Mount: R395-0402-01T-**285E**-R27-L14

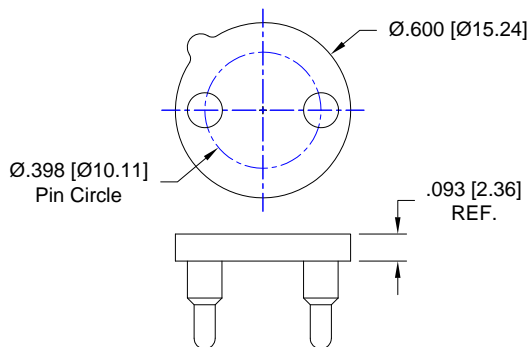


Fig. 153

Thru-Hole: R398-0402-01T-**436P55**-R27-L14
Surface Mount: R398-0402-01T-**440P55**-R27-L14

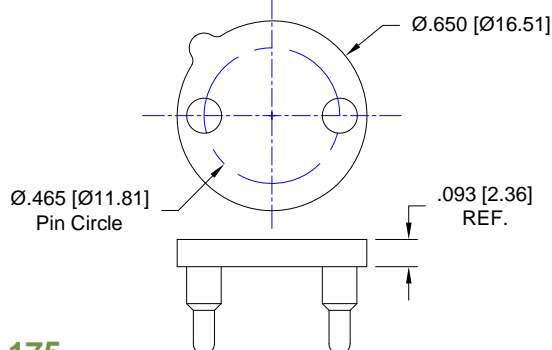


Fig. 175

Thru-Hole: R465-0402-01T-**436P55**-R27-L14
Surface Mount: R465-0402-01T-**440P55**-R27-L14

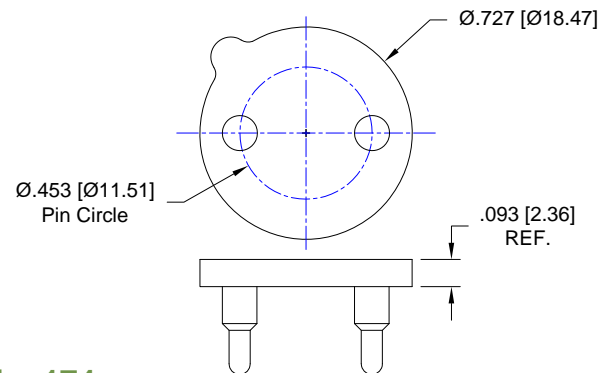
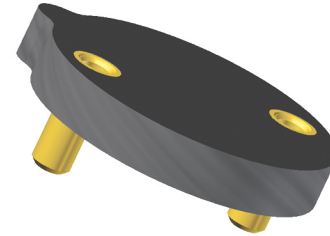


Fig. 174

Thru-Hole: R453-0402-01T-**436P55**-R27-L14
Surface Mount: R453-0402-01T-**440P55**-R27-L14

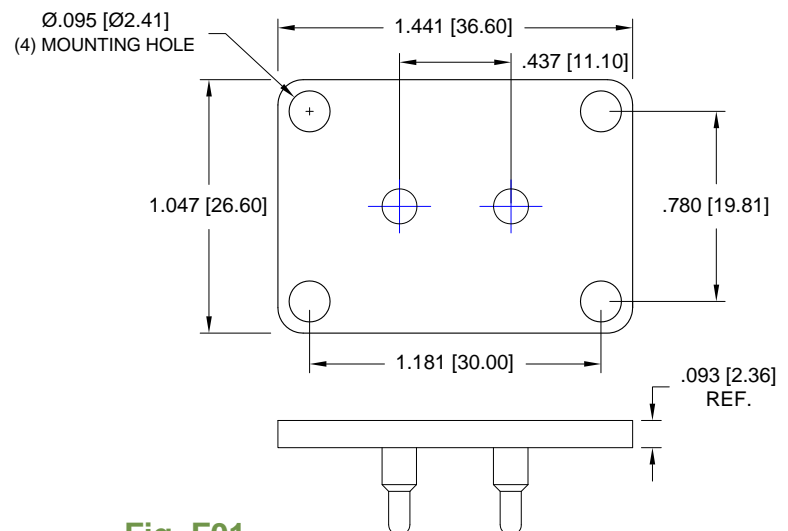


Fig. F01

Thru-Hole: F436-SP02-01-**436P55**-R27-L14
Surface Mount: F436-SP02-01-**440P55**-R27-L14

PRO-WAVE SOCKETS *Continued*

Top View Shown

Units: in [mm]

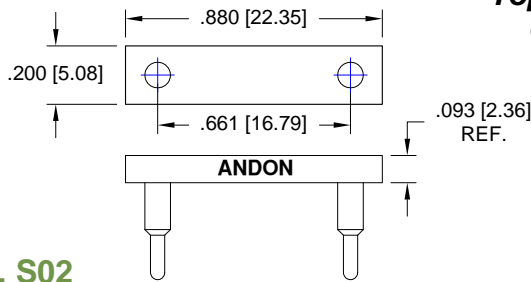


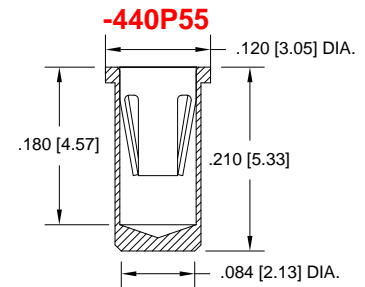
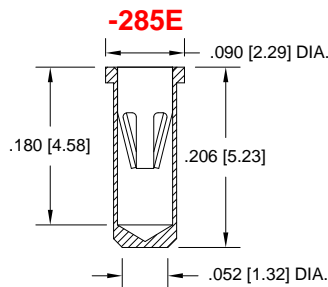
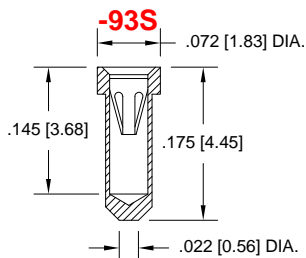
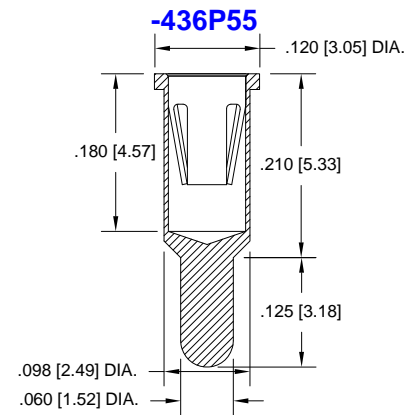
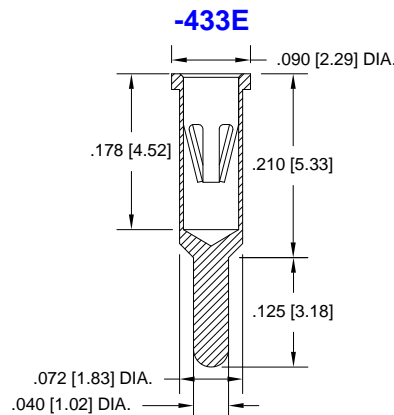
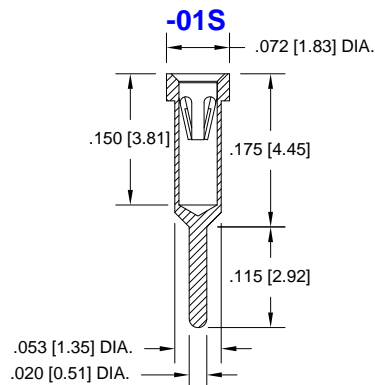
Fig. S02

Thru-Hole: 405-00627-02-433E-R27-L14

Surface Mount: 405-00627-02-285E-R27-L14

Socket Terminal Details

Cross Section View Shown Units: in [mm]



Technical Information

Material:

Insulator: Hi-Temp UL 94V-O
Terminal: Brass, per ASTM-B16
Contact: BeCu, Per ASTM-B194

Plating: RoHS COMPLIANT

R27 TERMINAL: GOLD / CONTACT: GOLD

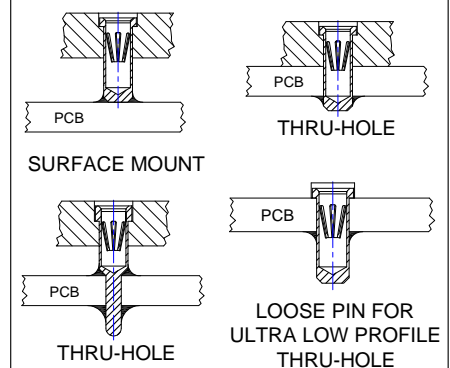
R17 TERMINAL: TIN / CONTACT: GOLD

OTHER PLATINGS AVAILABLE

Terminal Acceptance and Forces

Thru Hole Terminals				Surface Mount Terminals			
Thru Hole Terminal	Accepts Pin Diameter	Insertion Force	Withdrawal Force	Surface Mount Terminal	Accepts Pin Diameter	Insertion Force	Withdrawal Force
-01S	Ø.018 [Ø0.46]	9.0 oz Avg.	2.0 oz Min	-93S	Ø.018 [Ø0.46]	9.0 oz Avg.	2.0 oz Min
-433E	Ø.040 [Ø1.02]	36.0 oz Max	3.9 oz Min	-285E	Ø.040 [Ø1.02]	36.0 oz Max	3.9 oz Min
-436P55	Ø.060 [Ø1.52]	15.5 oz Max	2.1 oz Min	-440P55	Ø.060 [Ø1.52]	15.5 oz Max	2.1 oz Min

MOUNTING OPTIONS



"ANDON PROPRIETARY INFORMATION"

RoHS Compliant

*Sockets are not drawn to scale Pro-Wave 06/01/2011

©Copyright 2011 Andon Electronics Corporation. All Rights Reserved. This material is protected under US and other copyrights and may not be copied, sold, or redistributed in any form without written permission of Andon Electronics Corporation. Copyrights and trademarks are property of their respective companies. We reserve the right to change specifications without notice. Andon makes no warranty, expressed or implied, as to the suitability of the sockets for the intended purpose.

ANDON ELECTRONICS CORPORATION
4 Court Drive, Lincoln RI 02865, United States of America

www.andonelectronics.com or www.andonelect.com

Phone 401-333-0388 Fax 401-333-0287

Email Info@andonelect.com