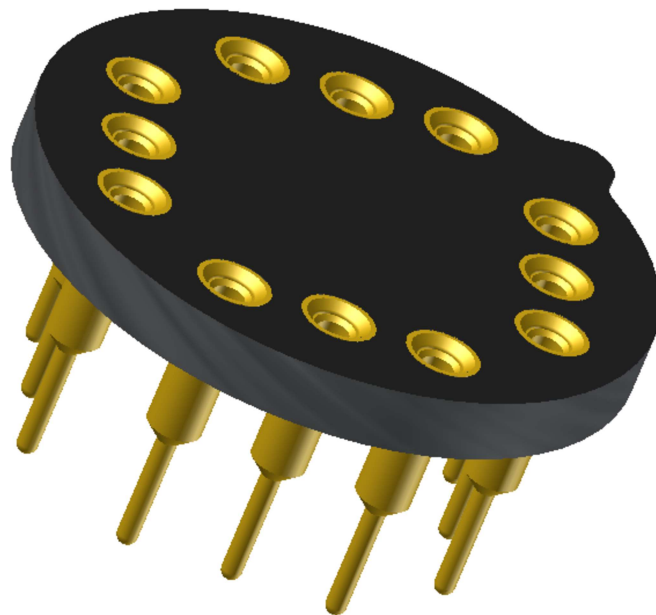




**High-Reliability  
Optoelectronic Sockets for  
OSI Optoelectronics**



**Featuring Andon's Unique Senstac<sup>TM</sup> Contact**

OSI Optoelectronics						
OSI Optoelectronics Model Number	Andon Part Number Replace "XXX" with Terminal Type	Terminal Type		Pin Ø [in]	Page Number	Figure Number
		Thru-Hole	Surface Mount			
A2C-16-1.57	C10-618-18-01-XXX-R27-L14	01S	93S	.018	12	42
A2V-16	C10-618-18-01-XXX-R27-L14	01S	93S	.018	12	42
A5C-35	C10-640-40-01-XXX-R27-L14	01S	93S	.018	12	41
A5C-38	C10-640-40-01-XXX-R27-L14	01S	93S	.018	12	41
A5V-35	C10-640-40-01-XXX-R27-L14	01S	93S	.018	12	41
A5V-35UV	C10-640-40-01-XXX-R27-L14	01S	93S	.018	12	41
A5V-38	C10-640-40-01-XXX-R27-L14	01S	93S	.018	12	41
APD007-15-60-T46	R100-0403-06T-XXX-R27-L14	75S	265S	.018	5	3
APD007-15-60-T46L	R100-0403-06T-XXX-R27-L14	75S	265S	.018	5	3
APD020-15-60-T46	R100-0403-06T-XXX-R27-L14	75S	265S	.018	5	3
APD020-15-60-T46L	R100-0403-06T-XXX-R27-L14	75S	265S	.018	5	3
APD02-6-150-T52	R100-0403-07T-XXX-R27-L14	211S	384S	.018	5	4
APD02-6-150-T52L	R100-0403-07T-XXX-R27-L14	211S	384S	.018	5	4
APD02-8-150-T52	R100-0403-07T-XXX-R27-L14	211S	384S	.018	5	4
APD02-8-150-T52L	R100-0403-07T-XXX-R27-L14	211S	384S	.018	5	4
APD02-9-250-T52	R100-0403-07T-XXX-R27-L14	211S	384S	.018	5	4
APD02-9-250-T52L	R100-0403-07T-XXX-R27-L14	211S	384S	.018	5	4
APD05-6-150-T52	R100-0403-07T-XXX-R27-L14	211S	384S	.018	5	4
APD05-6-150-T52L	R100-0403-07T-XXX-R27-L14	211S	384S	.018	5	4
APD05-8-150-T52	R100-0403-07T-XXX-R27-L14	211S	384S	.018	5	4
APD05-8-150-T52L	R100-0403-07T-XXX-R27-L14	211S	384S	.018	5	4
APD05-9-250-T52	R100-0403-07T-XXX-R27-L14	211S	384S	.018	5	4
APD05-9-250-T52L	R100-0403-07T-XXX-R27-L14	211S	384S	.018	5	4
APD10-6-150-T52	R100-0403-07T-XXX-R27-L14	211S	384S	.018	5	4
APD10-8-150-T52	R100-0403-07T-XXX-R27-L14	211S	384S	.018	5	4
APD10-9-250-T52	R100-0403-07T-XXX-R27-L14	211S	384S	.018	5	4
APD-1500	R200-0403-03T-XXX-R27-L14	01S	93S	.018	6	8
APD15-6-150-T5H	R200-0403-05T-XXX-R27-L14	01S	93S	.018	6	9
APD15-6-150-T5i	R200-0403-03T-XXX-R27-L14	01S	93S	.018	6	8
APD15-6-150-TO5	R200-0403-03T-XXX-R27-L14	01S	93S	.018	6	8
APD15-8-150-T5H	R200-0403-05T-XXX-R27-L14	01S	93S	.018	6	9
APD15-8-150-T5i	R200-0403-03T-XXX-R27-L14	01S	93S	.018	6	8
APD15-8-150-TO5	R200-0403-03T-XXX-R27-L14	01S	93S	.018	6	8
APD15-9-250-T5H	R200-0403-05T-XXX-R27-L14	01S	93S	.018	6	9
APD15-9-250-T5i	R200-0403-03T-XXX-R27-L14	01S	93S	.018	6	8
APD15-9-250-TO5	R200-0403-03T-XXX-R27-L14	01S	93S	.018	6	8
APD-300	R100-0403-06T-XXX-R27-L14	75S	265S	.018	5	3
APD-3000	R200-0403-03T-XXX-R27-L14	01S	93S	.018	6	8
APD-300L	R100-0403-06T-XXX-R27-L14	75S	265S	.018	5	3
APD30-6-150-T5H	R200-0403-05T-XXX-R27-L14	01S	93S	.018	6	9
APD30-6-150-T5i	R200-0403-03T-XXX-R27-L14	01S	93S	.018	6	8
APD30-6-150-TO5	R200-0403-03T-XXX-R27-L14	01S	93S	.018	6	8
APD30-8-150-T5H	R200-0403-05T-XXX-R27-L14	01S	93S	.018	6	9
APD30-8-150-T5i	R200-0403-03T-XXX-R27-L14	01S	93S	.018	6	8
APD30-8-150-TO5	R200-0403-03T-XXX-R27-L14	01S	93S	.018	6	8
APD-500	R100-0403-06T-XXX-R27-L14	75S	265S	.018	5	3
APD-500L	R100-0403-06T-XXX-R27-L14	75S	265S	.018	5	3
APD50-6-150-T8H	R295-0403-01T-XXX-R27-L14	01S	93S	.018	7	16
APD50-6-150-TO8	R295-0403-01T-XXX-R27-L14	01S	93S	.018	7	16
APD50-8-150-T8H	R295-0403-01T-XXX-R27-L14	01S	93S	.018	7	16
APD50-8-150-TO8	R295-0403-01T-XXX-R27-L14	01S	93S	.018	7	16
APD-900	R200-0403-03T-XXX-R27-L14	01S	93S	.018	6	8
APX-NG0002APD	R100-0403-06T-XXX-R27-L14	75S	265S	.018	5	3
APX-NG0004APD	R100-0403-06T-XXX-R27-L14	75S	265S	.018	5	3

See last page for other mounting types including low profile options.  
Heat sink socket available to reduce heat and noise. Contact Andon for details.

OSI Optoelectronics						
OSI Optoelectronics Model Number	Andon Part Number Replace "XXX" with Terminal Type	Terminal Type		Pin Ø [in]	Page Number	Figure Number
		Thru-Hole	Surface Mount			
APX-NG0006APD	R100-0403-06T-XXX-R27-L14	75S	265S	.018	5	3
APX-VNG0031PSD-001	R200-0805-01T-XXX-R27-L14	75S	265S	.018	6	10
APX-VNG0031PSD-002	R200-0805-01T-XXX-R27-L14	75S	265S	.018	6	10
BPX-65	R100-0402-06T-XXX-R27-L14	75S	265S	.018	5	2
BPX65-100	R100-0806-01T-XXX-R27-L14	C2	-		6	6
BPX-65R	R100-0403-06T-XXX-R27-L14	75S	265S	.018	5	3
CD-1705	R080-SP02-01T-XXX-R27-L14	400T4	414T4	.012	5	1
CD-25T	R200-0403-03T-XXX-R27-L14	01S	93S	.018	6	8
DL-2	R400-0804-01T-XXX-R27-L14	01S	93S	.018	8	22
DL-4	R400-0804-01T-XXX-R27-L14	01S	93S	.018	8	22
DLS-2	R400-0804-01T-XXX-R27-L14	01S	93S	.018	8	22
DLS-2S	R200-0805-01T-XXX-R27-L14	75S	265S	.018	6	10
DLS-4	R400-0804-01T-XXX-R27-L14	01S	93S	.018	8	22
FCH-H125G-GaAs-100	R100-0404-01T-XXX-R27-L14	75S	265S	.018	6	5
FCH-H250G-GaAs-100	R100-0404-01T-XXX-R27-L14	75S	265S	.018	6	5
FCH-H622M-InGaAs-75	R100-0404-01T-XXX-R27-L14	75S	265S	.018	6	5
FCH-InGaAs-1000	R100-0402-06T-XXX-R27-L14	75S	265S	.018	5	2
FCH-InGaAs-120	R100-0402-06T-XXX-R27-L14	75S	265S	.018	5	2
FCH-InGaAs-120-XX-XX	R100-0403-06T-XXX-R27-L14	75S	265S	.018	5	3
FCH-InGaAs-1500	R100-0402-06T-XXX-R27-L14	75S	265S	.018	5	2
FCH-InGaAs-300	R100-0402-06T-XXX-R27-L14	75S	265S	.018	5	2
FCH-InGaAs-3000-X	R100-0402-06T-XXX-R27-L14	75S	265S	.018	5	2
FCH-InGaAs-500	R100-0402-06T-XXX-R27-L14	75S	265S	.018	5	2
FCH-InGaAs-75	R100-0402-06T-XXX-R27-L14	75S	265S	.018	5	2
FCH-InGaAs-75-XX-XX	R100-0403-06T-XXX-R27-L14	75S	265S	.018	5	3
FCH-InGaAs-Q3000	R400-SP12-01T-XXX-R27-S14	01S	93S	.018	8	23
FIL-100C	IS229-67508-XXX-R27-L14	01S	93S	.018	11	38
FIL-20C	R300-SP06-01N-XXX-R27-L14	01S	93S	.018	7	18
FIL-44C	IS229-67508-XXX-R27-L14	01S	93S	.018	11	38
FIL-5C	R300-SP06-01N-XXX-R27-L14	01S	93S	.018	7	18
FIL-C10DG	IS229-67508-XXX-R27-L14	01S	93S	.018	11	38
FIL-C4DG	R300-SP06-01N-XXX-R27-L14	01S	93S	.018	7	18
FIL-UV100	IS229-67508-XXX-R27-L14	01S	93S	.018	11	38
FIL-UV20	R300-SP06-01N-XXX-R27-L14	01S	93S	.018	7	18
FIL-UV50	IS229-67508-XXX-R27-L14	01S	93S	.018	11	38
OSD1.2-7Q	R100-0402-06T-XXX-R27-L14	75S	265S	.018	5	2
OSD1.2-7U	R100-0402-06T-XXX-R27-L14	75S	265S	.018	5	2
OSD1-0	R100-0402-06T-XXX-R27-L14	75S	265S	.018	5	2
OSD100-0A	R750-0402-02T-XXX-R27-L14	433E	285E	.040	9	26
OSD100-5TA	R750-0402-02T-XXX-R27-L14	433E	285E	.040	9	26
OSD15-0	R200-0402-01T-XXX-R27-L14	01S	93S	.018	6	7
OSD15-5T	R200-0402-01T-XXX-R27-L14	01S	92S	.018	6	7
OSD1-5T	R100-0402-06T-XXX-R27-L14	75S	265S	.018	5	2
OSD1-E	R100-0402-06T-XXX-R27-L14	75S	265S	.018	5	2
OSD35-0	R295-0403-01T-XXX-R27-L14	01S	93S	.018	7	16
OSD35-7CO	IS290SP-02-01-XXX-R27-L14	01S	93S	.018	10	34
OSD35-7Q	R295-0403-01T-XXX-R27-L14	01S	93S	.018	7	16
OSD35-LR-A	IS290SP-02-01-XXX-R27-L14	01S	93S	.018	10	34
OSD35-LR-D	IS290SP-02-01-XXX-R27-L14	01S	93S	.018	10	34
OSD3-5T	R100-0402-06T-XXX-R27-L14	75S	265S	.018	5	2
OSD3-E	R100-0402-06T-XXX-R27-L14	75S	265S	.018	5	2
OSD5.8-7Q	R200-0402-01T-XXX-R27-L14	01S	93S	.018	6	7
OSD5.8-7U	R200-0402-01T-XXX-R27-L14	01S	93S	.018	6	7
OSD-5-0	R200-0402-01T-XXX-R27-L14	01S	93S	.018	6	7

See last page for other mounting types including low profile options.  
Heat sink socket available to reduce heat and noise. Contact Andon for details.

OSI Optoelectronics						
OSI Optoelectronics Model Number	Andon Part Number Replace "XXX" with Terminal Type	Thru-Hole	Surface Mount	Pin Ø [in]	Page Number	Figure Number
OSD5-5T	R200-0402-01T-XXX-R27-L14	01S	93S	.018	6	7
OSD-60-0	R400-0803-02T-XXX-R27-L14	01S	93S	.018	8	21
OSD60-5T	R400-0803-02T-XXX-R27-L14	01S	93S	.018	8	21
OSD60-E	R400-0803-02T-XXX-R27-L14	01S	93S	.018	8	21
OSI-515	R230-0808-01T-XXX-R27-L14	75S	384S	.018	7	13
OS-P200	CSP306-04-01-XXX-R27-L14	01S	93S	.018	10	33
UV-020	R295-0402-02T-XXX-R27-L14	01S	93S	.018	7	15
PIN-005D-245F	R215-0402-01T-XXX-R27-L14	01S	93S	.018	6	11
PIN-005E-550F	R200-0402-01T-XXX-R27-L14	01S	93S	.018	6	7
PIN-020A	R100-0403-07T-XXX-R27-L14	211S	384S	.018	5	4
PIN-020UV	R400-SP12-01T-XXX-R27-S14	01S	93S	.018	8	23
PIN-040A	R100-0403-07T-XXX-R27-L14	211S	384S	.018	5	4
PIN-040-DP/SB	R100-0403-07T-XXX-R27-L14	211S	384S	.018	5	4
PIN-100-YAG	R750-1806-01T-XXX-R27-L14	01S	93S	.018	9	27
PIN-10DI	R730-0803-01T-XXX-R27-L14	01S	93S	.018	9	25
PIN-10DPI	R730-0803-01T-XXX-R27-L14	01S	93S	.018	9	25
PIN-10DPI/SB	R730-0803-01T-XXX-R27-L14	01S	93S	.018	9	25
PIN-125DPL	R100-0402-06T-XXX-R27-L14	75S	265S	.018	5	2
PIN-13D	R200-0402-01T-XXX-R27-L14	01S	93S	.018	6	7
PIN-13DI	R200-0403-03T-XXX-R27-L14	01S	93S	.018	6	8
PIN-13DP	R200-0402-01T-XXX-R27-L14	01S	93S	.018	6	7
PIN-13DPI	R200-0403-03T-XXX-R27-L14	01S	93S	.018	6	8
PIN-220D	C15-04-02-01-XXX-R27-L14	433E	285E	.040	10	31
PIN-220DP	C15-04-02-01-XXX-R27-L14	433E	285E	.040	10	31
PIN220DP/SB	C15-04-02-01-XXX-R27-L14	433E	285E	.040	10	31
PIN-220DP/SB	C15-04-02-01-XXX-R27-L14	433E	285E	.040	10	31
PIN-2DI	R100-0403-06T-XXX-R27-L14	75S	265S	.018	5	3
PIN-2DPI	R100-0403-06T-XXX-R27-L14	75S	265S	.018	5	3
PIN-3CD	R100-0402-06T-XXX-R27-L14	75S	265S	.018	5	2
PIN-3CDP	R100-0403-06T-XXX-R27-L14	75S	265S	.018	5	3
PIN-3CDPI	R100-0403-06T-XXX-R27-L14	75S	265S	.018	5	3
PIN-44D	R295-0402-02T-XXX-R27-L14	01S	93S	.018	7	15
PIN-44DI	R295-0403-01T-XXX-R27-L14	01S	93S	.018	7	16
PIN-44DP	R295-0402-02T-XXX-R27-L14	01S	93S	.018	7	15
PIN-44DPI	R295-0403-01T-XXX-R27-L14	01S	93S	.018	7	16
PIN-555AP	R230-0808-01T-XXX-R27-L14	75S	384S	.018	7	13
PIN-5D	R200-0402-01T-XXX-R27-L14	01S	93S	.018	6	7
PIN-5DI	R200-0403-03T-XXX-R27-L14	01S	93S	.018	6	8
PIN-5DP	R200-0402-01T-XXX-R27-L14	01S	93S	.018	6	7
PIN-5DP/SB	R200-0402-01T-XXX-R27-L14	01S	93S	.018	6	7
PIN-5DPI	R200-0403-03T-XXX-R27-L14	01S	93S	.018	6	8
PIN-5-YAG	R200-0403-03T-XXX-R27-L14	01S	93S	.018	6	8
PIN-6D	R295-0402-02T-XXX-R27-L14	01S	93S	.018	7	15
PIN-6DI	R295-0403-01T-XXX-R27-L14	01S	93S	.018	7	16
PIN-6DP	R295-0402-02T-XXX-R27-L14	01S	93S	.018	7	15
PIN-6DPI	R295-0403-01T-XXX-R27-L14	01S	93S	.018	7	16
PIN-DSIn	R220-0404-01T-XXX-R27-L14	01S	93S	.018	6	12
PIN-DSIn-TEC	R375-SP08-02T-XXX-R27-L14	75S	265S	.018	8	19
PIN-DSS	R220-0404-01T-XXX-R27-L14	01S	93S	.018	6	12
PIN-HR005	R100-0403-06T-XXX-R27-L14	75S	265S	.018	5	3
PIN-HR005L	R100-0403-06T-XXX-R27-L14	75S	265S	.018	5	3
PIN-HR008	R100-0403-06T-XXX-R27-L14	75S	265S	.018	5	3
PIN-HR008L	R100-0403-06T-XXX-R27-L14	75S	265S	.018	5	3
PIN-HR020	R100-0403-06T-XXX-R27-L14	75S	265S	.018	5	3

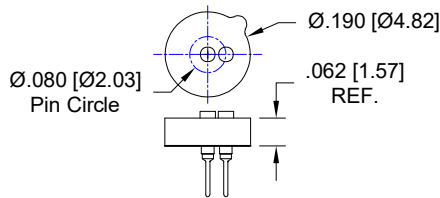
See last page for other mounting types including low profile options.  
Heat sink socket available to reduce heat and noise. Contact Andon for details.

OSI Optoelectronics						
OSI Optoelectronics Model Number	Andon Part Number Replace "XXX" with Terminal Type	Thru-Hole	Surface Mount	Pin Ø [in]	Page Number	Figure Number
PIN-HR020L	R100-0403-06T-XXX-R27-L14	75S	265S	.018	5	3
PIN-HR026	R100-0403-06T-XXX-R27-L14	75S	265S	.018	5	3
PIN-HR026L	R100-0403-06T-XXX-R27-L14	75S	265S	.018	5	3
PIN-HR040	R100-0403-06T-XXX-R27-L14	75S	265S	.018	5	3
PIN-HR040L	R100-0403-06T-XXX-R27-L14	75S	265S	.018	5	3
PIN-RD07	R295-0403-01T-XXX-R27-L14	01S	93S	.018	7	16
PIN-RD15	R295-0403-01T-XXX-R27-L14	01S	93S	.018	7	16
QD50-0	R400-SP06-01T-XXX-R27-L14	01S	93S	.018	8	20
QD7-0	R200-0805-01T-XXX-R27-L14	75S	265S	.018	6	10
RD-100	IS490SP-02-01-XXX-R27-L14	01S	93S	.018	11	36
RD-100A	IS490SP-02-01-XXX-R27-L14	01S	93S	.018	11	36
SC-10D	R730-SP05-01T-XXX-R27-L14	01S	93S	.018	9	28
SC-4D	R200-0805-01T-XXX-R27-L14	75S	265S	.018	6	10
SC-50D	R1110-SP05-01N-XXX-R27-L14	01S	93S	.018	9	30
SL-15	C10-624-24-01-XXX-R27-L14	01S	93S	.018	12	40
SL3-1	R200-0805-01T-XXX-R27-L14	75S	265S	.018	6	10
SL3-2	C10-308-08-01-XXX-R27-L14	01S	93S	.018	12	39
SL5-1	R300-0803-02T-XXX-R27-L14	01S	93S	.018	7	17
SL5-2	C10-308-08-01-XXX-R27-L14	01S	93S	.018	12	39
SL76-1	CSP4650-04-01-XXX-R27-L14	433E	285E	.040	12	43
SPOT-11YAG-FL	R750-1207-01T-XXX-R27-L14	01S	93S	.018	9	29
SPOT-13AYAG-FL	R750-1207-01T-XXX-R27-L14	01S	93S	.018	9	29
SPOT-15-YAG	R750-1806-01T-XXX-R27-L14	01S	93S	.018	9	27
SPOT-2D	R200-0805-01T-XXX-R27-L14	75S	265S	.018	6	10
SPOT-3D	R200-0805-01T-XXX-R27-L14	75S	265S	.018	6	10
SPOT-4D	R200-0805-01T-XXX-R27-L14	75S	265S	.018	6	10
SPOT-4D-0	R200-0805-01T-XXX-R27-L14	75S	265S	.018	6	10
SPOT-4DMI	R200-0805-01T-XXX-R27-L14	75S	265S	.018	6	10
SPOT-9D	R730-0805-01T-XXX-R27-L14	01S	93S	.018	8	24
SPOT-9D-0	R730-0805-01T-XXX-R27-L14	01S	93S	.018	8	24
SPOT-9DMI	R730-0805-01T-XXX-R27-L14	01S	93S	.018	8	24
SPOT-9-YAG	R750-1806-01T-XXX-R27-L14	01S	93S	.018	9	27
UDT-020D	R400-SP12-01T-XXX-R27-S14	01S	93S	.018	8	23
UDT-055UV	R230-0808-01T-XXX-R27-L14	75S	384S	.018	7	13
UDT-455	R230-0808-01T-XXX-R27-L14	75S	384S	.018	7	13
UDT-455UV	R230-0808-01T-XXX-R27-L14	75S	384S	.018	7	13
UDT-555D	R230-0808-01T-XXX-R27-L14	75S	384S	.018	7	13
UDT-555UV	R230-0808-01T-XXX-R27-L14	75S	384S	.018	7	13
UDT-555UV/LN	R230-0808-01T-XXX-R27-L14	75S	384S	.018	7	13
UV-001	R200-0402-01T-XXX-R27-L14	01S	93S	.018	6	7
UV-005	R200-0402-01T-XXX-R27-L14	01S	93S	.018	6	7
UV-005D	R200-0402-01T-XXX-R27-L14	01S	93S	.018	6	7
UV-005DC	IS280SP-02-01-XXX-R27-L14	01S	93S	.018	11	35
UV-005DQ	R200-0402-01T-XXX-R27-L14	01S	93S	.018	6	7
UV-005DQC	IS490SP-02-01-XXX-R27-L14	01S	93S	.018	11	36
UV-005E	R200-0402-01T-XXX-R27-L14	01S	93S	.018	6	7
UV-005EC	IS280SP-02-01-XXX-R27-L14	01S	93S	.018	11	35
UV-005EQ	R200-0402-01T-XXX-R27-L14	01S	93S	.018	6	7
UV-005EQC	IS490SP-02-01-XXX-R27-L14	01S	93S	.018	11	36
UV-013D	R200-0402-01T-XXX-R27-L14	01S	93S	.018	6	7
UV-013E	R200-0402-01T-XXX-R27-L14	01S	93S	.018	6	7
UV-015	R200-0402-01T-XXX-R27-L14	01S	93S	.018	6	7
UV-035	R295-0402-02T-XXX-R27-L14	01S	93S	.018	7	15
UV-035D	R295-0402-02T-XXX-R27-L14	01S	93S	.018	7	15

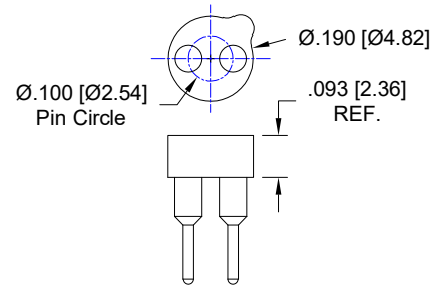
See last page for other mounting types including low profile options.  
Heat sink socket available to reduce heat and noise. Contact Andon for details.

OSI Optoelectronics						
OSI Optoelectronics Model Number	Andon Part Number Replace "XXX" with Terminal Type	Terminal Type		Pin Ø [in]	Page Number	Figure Number
		Thru-Hole	Surface Mount			
UV-035DC	IS290SP-02-01-XXX-R27-L14	01S	93S	.018	10	34
UV-035DQ	R295-0402-01T-XXX-R27-L14	01S	93S	.018	7	14
UV-035DQC	IS490SP-02-01-XXX-R27-L14	01S	93S	.018	11	36
UV-035E	R295-0402-02T-XXX-R27-L14	01S	93S	.018	7	15
UV-035EC	IS290SP-02-01-XXX-R27-L14	01S	93S	.018	10	34
UV-035EQ	R295-0402-01T-XXX-R27-L14	01S	93S	.018	7	14
UV-035EQC	IS490SP-02-01-XXX-R27-L14	01S	93S	.018	11	36
UV-100DC	IS500SP-02-01-XXX-R27-L14	01S	93S	.018	11	37
UV-100DQC	IS490SP-02-01-XXX-R27-L14	01S	93S	.018	11	36
UV-100EC	IS500SP-02-01-XXX-R27-L14	01S	93S	.018	11	37
UV-100EQC	IS490SP-02-01-XXX-R27-L14	01S	93S	.018	11	36
UV-100L	R730-0803-01T-XXX-R27-L14	01S	93S	.018	9	25
UV-35P	IS275SP-02-01-XXX-R27-L14	01S	93S	.018	10	32
UV-50L	R730-0803-01T-XXX-R27-L14	01S	93S	.018	9	25
XUV-005	R200-0402-01T-XXX-R27-L14	01S	93S	.018	6	7
XUV-020	R295-0402-01T-XXX-R27-L14	01S	93S	.018	7	14
XUV-035	R295-0402-01T-XXX-R27-L14	01S	93S	.018	7	14
XUV-100C	IS490SP-02-01-XXX-R27-L14	01S	93S	.018	11	36
XUV-50C	IS490SP-02-01-XXX-R27-L14	01S	93S	.018	11	36

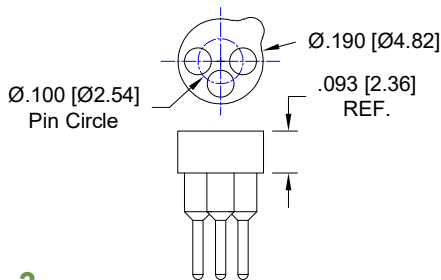
See last page for other mounting types including low profile options.  
Heat sink socket available to reduce heat and noise. Contact Andon for details.



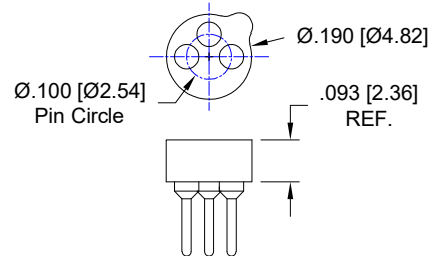
**Fig. 1**  
Thru-Hole: R080-SP02-01T-400T4-R27-L14  
Surface Mount: R080-SP02-01T-414T4-R27-L14



**Fig. 2**  
Thru-Hole: R100-0402-06T-75S-R27-L14  
Surface Mount: R100-0402-06T-265S-R27-L14

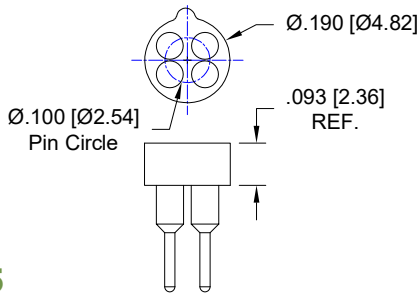


**Fig. 3**  
Thru-Hole: R100-0403-06T-75S-R27-L14  
Surface Mount: R100-0403-06T-265S-R27-L14

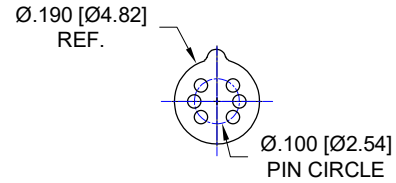


**Fig. 4**  
Thru-Hole: R100-0403-07T-211S-R27-L14  
Surface Mount: R100-0403-07T-384S-R27-L14

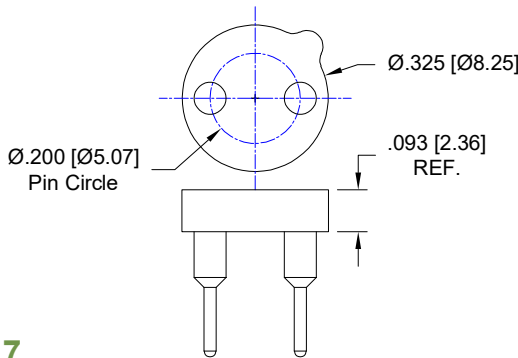
## OSI Optoelectronics Top View Shown Units: in [mm]



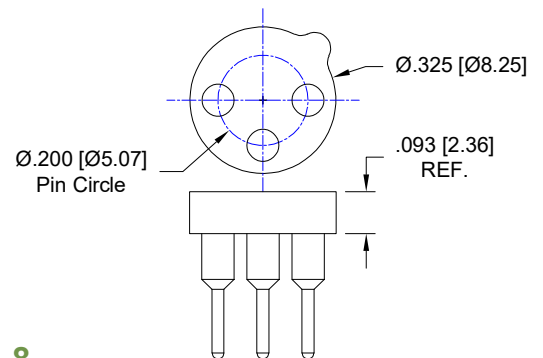
**Fig. 5**  
Thru-Hole: R100-0404-01T-75S-R27-L14  
Surface Mount: R100-0404-01T-265S-R27-L14



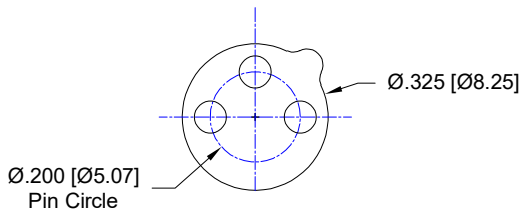
**Fig. 6**  
Thru-Hole: R100-0806-01T-C2-R27-L14  
Surface Mount: N/A



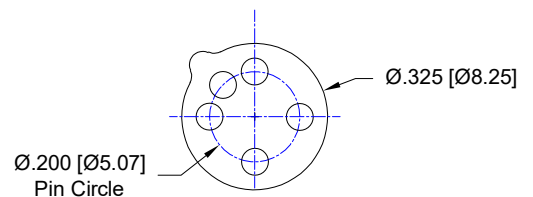
**Fig. 7**  
Thru-Hole: R200-0402-01T-01S-R27-L14  
Surface Mount: R200-0402-01T-93S-R27-L14



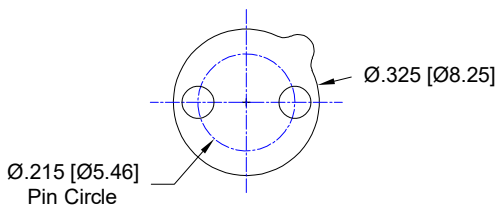
**Fig. 8**  
Thru-Hole: R200-0403-03T-01S-R27-L14  
Surface Mount: R200-0403-03T-93S-R27-L14



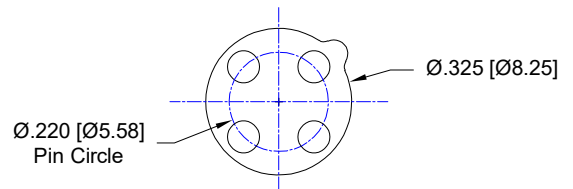
**Fig. 9**  
Thru-Hole: R200-0403-05T-01S-R27-L14  
Surface Mount: R200-0403-05T-93S-R27-L14



**Fig. 10**  
Thru-Hole: R200-0805-01T-75S-R27-L14  
Surface Mount: R200-0805-01T-265S-R27-L14



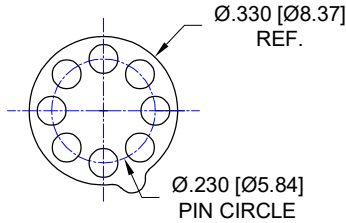
**Fig. 11**  
Thru-Hole: R215-0402-01T-01S-R27-L14  
Surface Mount: R215-0402-01T-93S-R27-L14



**Fig. 12**  
Thru-Hole: R220-0404-01T-01S-R27-L14  
Surface Mount: R220-0404-01T-93S-R27-L14

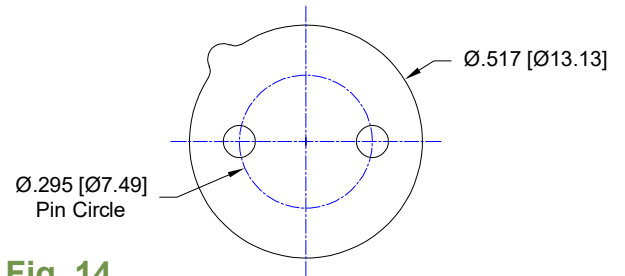
## OSI Optoelectronics Continued

Top View Shown  
Units: in [mm]



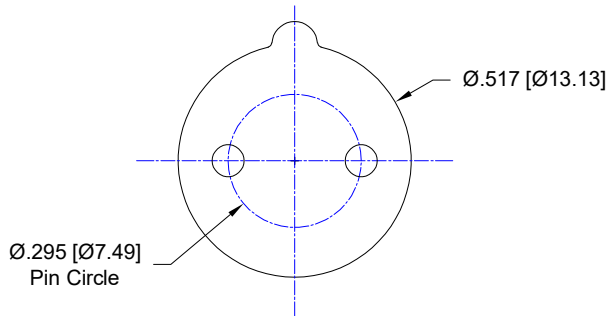
**Fig. 13**

Thru-Hole: R230-0808-01T-75S-R27-L14  
Surface Mount: R230-0808-01T-384S-R27-L14



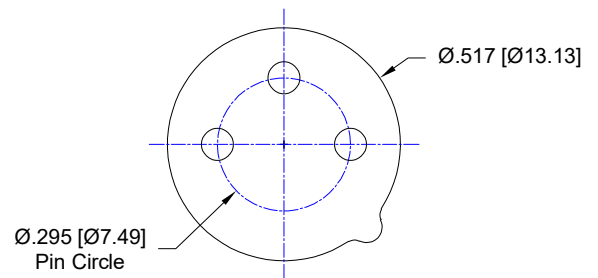
**Fig. 14**

Thru-Hole: R295-0402-01T-01S-R27-L14  
Surface Mount: R295-0402-01T-93S-R27-L14



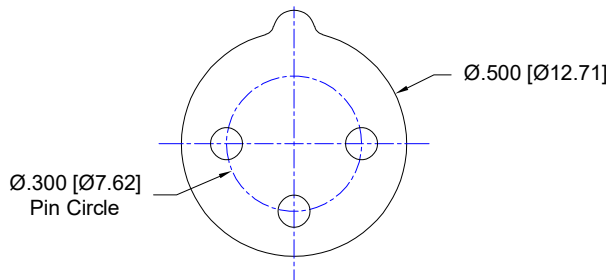
**Fig. 15**

Thru-Hole: R295-0402-02T-01S-R27-L14  
Surface Mount: R295-0402-02T-93S-R27-L14



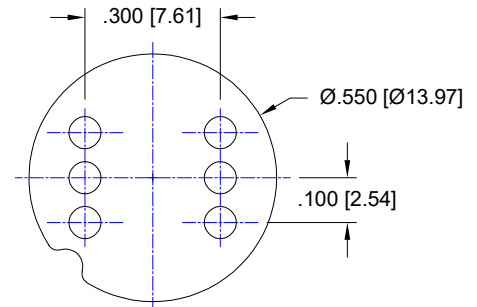
**Fig. 16**

Thru-Hole: R295-0403-01T-01S-R27-L14  
Surface Mount: R295-0403-01T-93S-R27-L14



**Fig. 17**

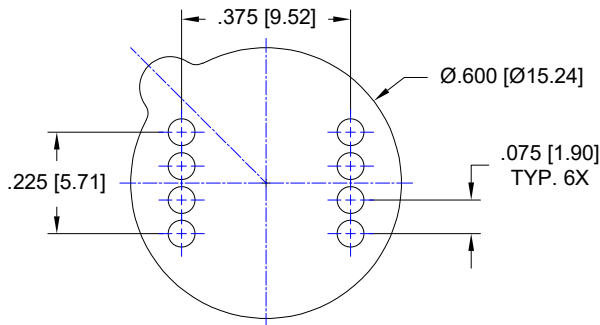
Thru-Hole: R300-0803-02T-01S-R27-L14  
Surface Mount: R300-0803-02T-93S-R27-L14



**Fig. 18**

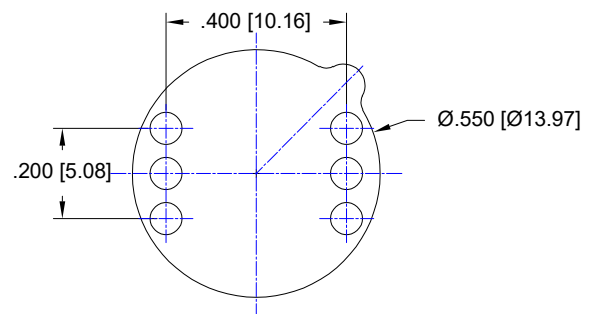
Thru-Hole: R300-SP06-01N-01S-R27-L14  
Surface Mount: R300-SP06-01N-93S-R27-L14

**OSI Optoelectronics Continued**  
**Top View Shown**  
**Units: in [mm]**



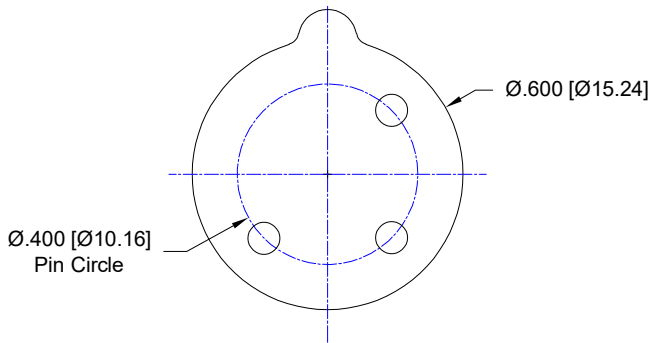
**Fig. 19**

**Thru-Hole:** R375-SP08-02T-75S-R27-L14  
**Surface Mount:** R375-SP08-02T-265S-R27-L14



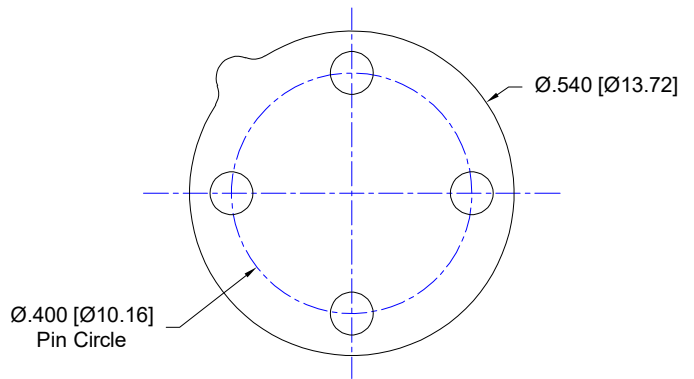
**Fig. 20**

**Thru-Hole:** R400-SP06-01T-01S-R27-L14  
**Surface Mount:** R400-SP06-01T-93S-R27-L14



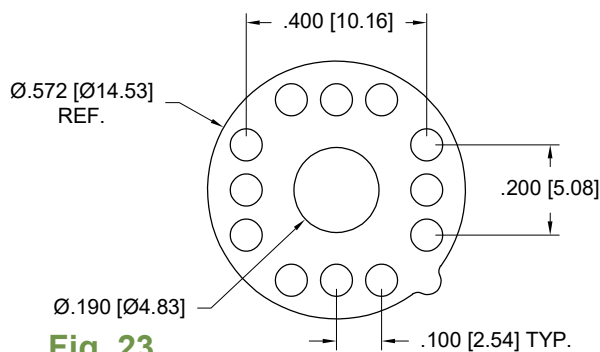
**Fig. 21**

**Thru-Hole:** R400-0803-02T-01S-R27-L14  
**Surface Mount:** R400-0803-02T-93S-R27-L14



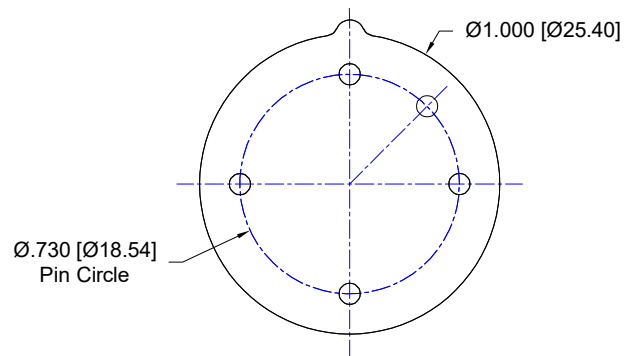
**Fig. 22**

**Thru-Hole:** R400-0804-01T-01S-R27-L14  
**Surface Mount:** R400-0804-01T-93S-R27-L14



**Fig. 23**

**Thru-Hole:** R400-SP12-01T-01S-R27-S14  
**Surface Mount:** R400-SP12-01T-93S-R27-S14

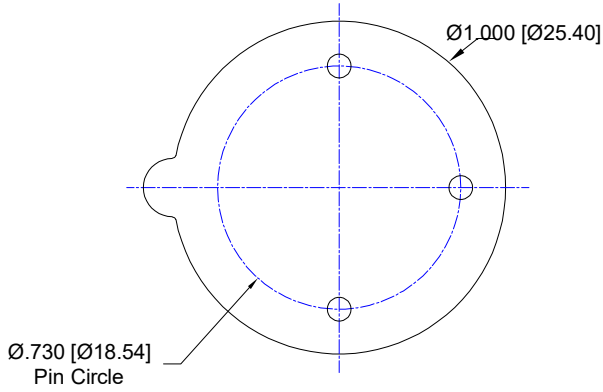


**Fig. 24**

**Thru-Hole:** R730-0805-01T-01S-R27-L14  
**Surface Mount:** R730-0805-01T-93S-R27-L14

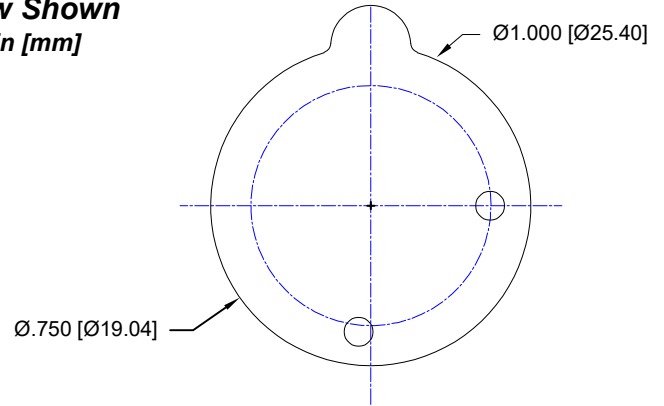
**OSI Optoelectronics Continued**

**Top View Shown**  
Units: in [mm]



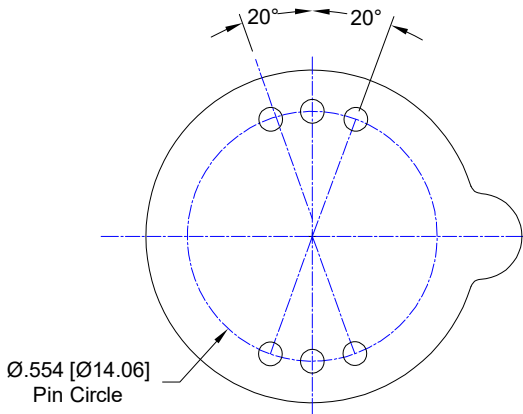
**Fig. 25**

Thru-Hole: R730-0803-01T-01S-R27-L14  
Surface Mount: R730-0803-01T-93S-R27-L14



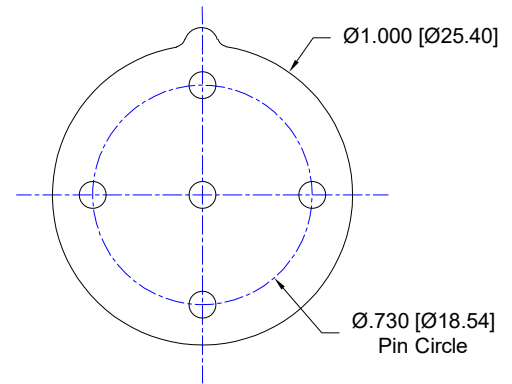
**Fig. 26**

Thru-Hole: R750-0402-02T-433E-R27-L14  
Surface Mount: R750-0402-02T-285E-R27-L14



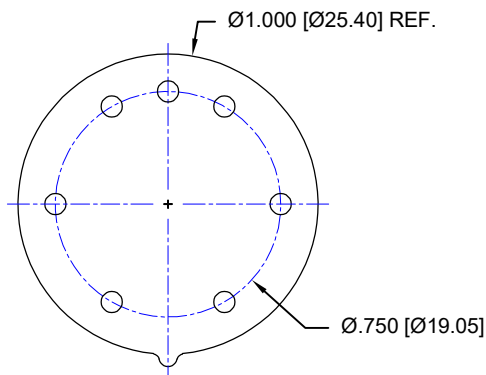
**Fig. 27**

Thru-Hole: R750-1806-01T-01S-R27-L14  
Surface Mount: R750-1806-01T-93S-R27-L14



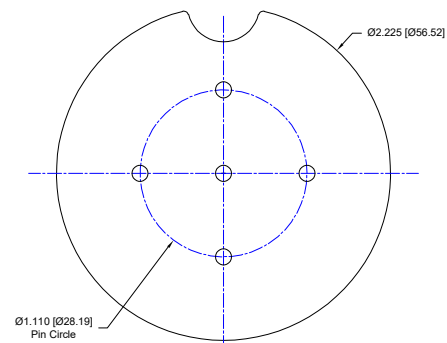
**Fig. 28**

Thru-Hole: R730-SP05-01T-01S-R27-L14  
Surface Mount: R730-SP05-01T-93S-R27-L14



**Fig. 29**

Thru-Hole: R750-1207-01T-01S-R27-L14  
Surface Mount: R750-1207-01T-93S-R27-L14

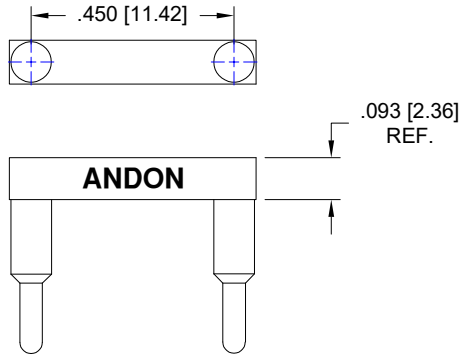


**Fig. 30**

Thru-Hole: R1110-SP05-01N-01S-R27-L14  
Surface Mount: R1110-SP05-01N-93S-R27-L14

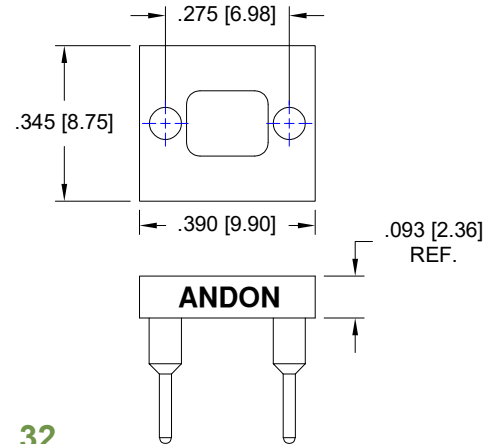
## OSI Optoelectronics Continued

Top View Shown  
Units: in [mm]



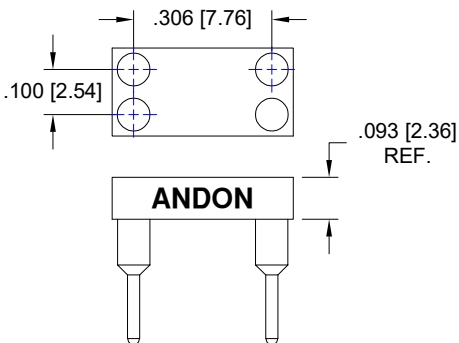
**Fig. 31**

Thru-Hole: C15-04-02-01-433E-R27-L14  
Surface Mount: C15-04-02-01-285E-R27-L14



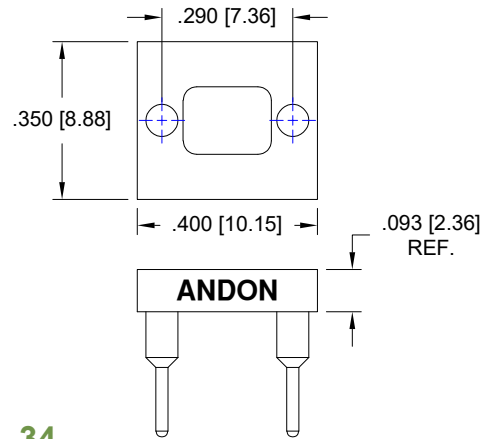
**Fig. 32**

Thru-Hole: IS275SP-02-01-01S-R27-L14  
Surface Mount: IS275SP-02-01-93S-R27-L14



**Fig. 33**

Thru-Hole: CSP306-04-01-01S-R27-L14  
Surface Mount: CSP306-04-01-93S-R27-L14

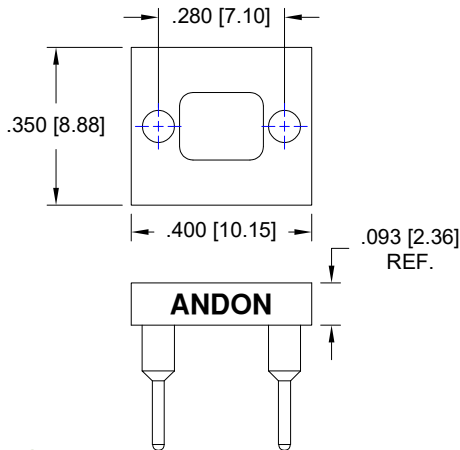


**Fig. 34**

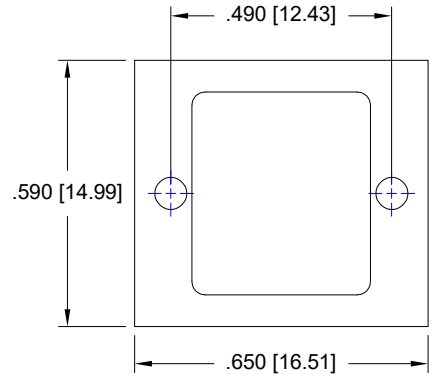
Thru-Hole: IS290SP-02-01-01S-R27-L14  
Surface Mount: IS290SP-02-01-93S-R27-L14

## OSI Optoelectronics Continued

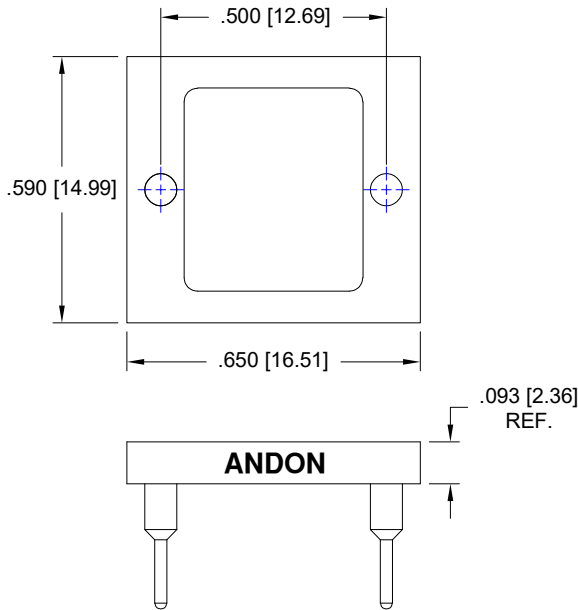
Top View Shown  
Units: in [mm]



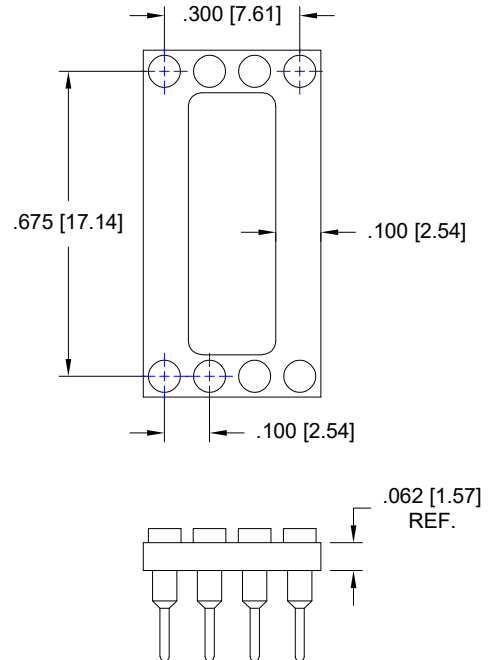
**Fig. 35**  
Thru-Hole: IS280SP-02-01-01S-R27-L14  
Surface Mount: IS280SP-02-01-93S-R27-L14



**Fig. 36**  
Thru-Hole: IS490SP-02-01-01S-R27-L14  
Surface Mount: IS490SP-02-01-93S-R27-L14

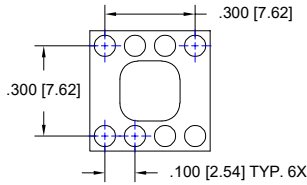


**Fig. 37**  
Thru-Hole: IS500SP-02-01-01S-R27-L14  
Surface Mount: IS500SP-02-01-93S-R27-L14

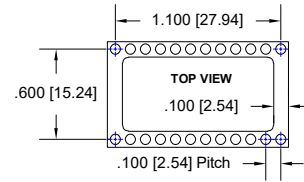


**Fig. 38**  
Thru-Hole: IS229-67508-01S-R27-L14  
Surface Mount: IS229-67508-93S-R27-L14

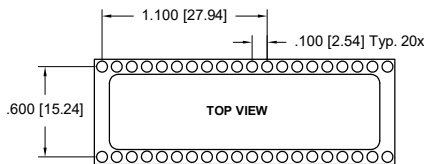
**OSI Optoelectronics Continued**  
**Top View Shown**  
Units: in [mm]



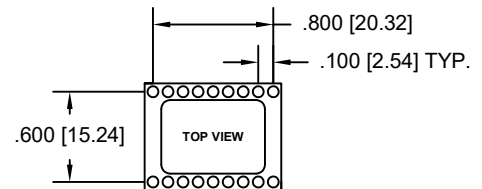
**Fig. 39 8 PIN**  
Thru-Hole: C10-308-08-01-01S-R27-L14  
Surface Mount: C10-308-08-01-93S-R27-L14



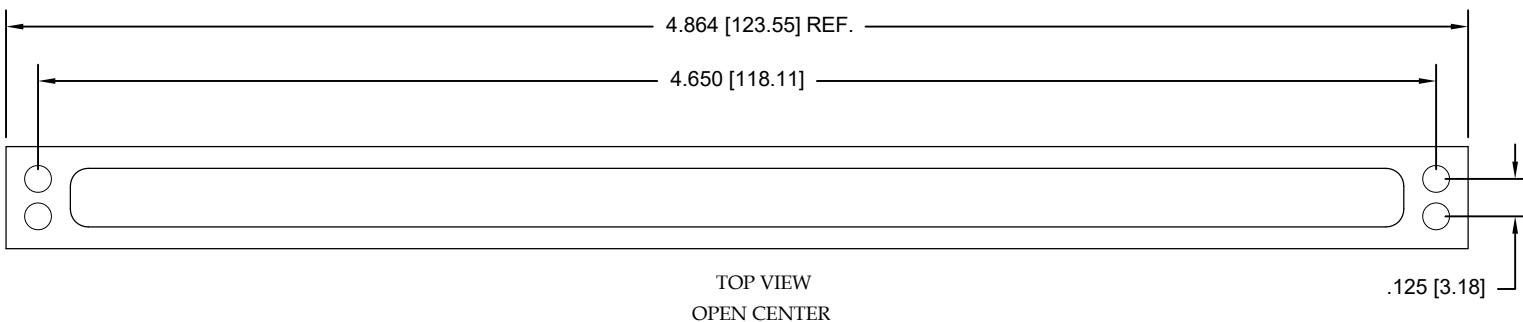
**Fig. 40 24 PIN**  
Thru-Hole: C10-624-24-01-01S-R27-L14  
Surface Mount: C10-624-24-01-93S-R27-L14



**Fig. 41 40 PIN**  
Thru-Hole: C10-640-40-01-01S-R27-L14  
Surface Mount: C10-640-40-01-93S-R27-L14



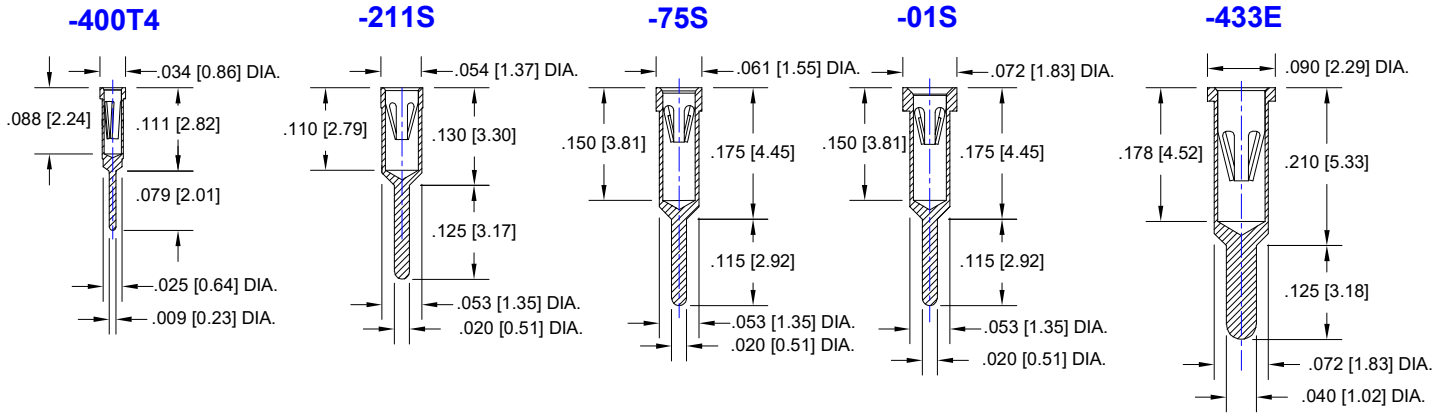
**Fig. 42 18 PIN**  
Thru-Hole: C10-618-18-01-01S-R27-L14  
Surface Mount: C10-618-18-01-93S-R27-L14



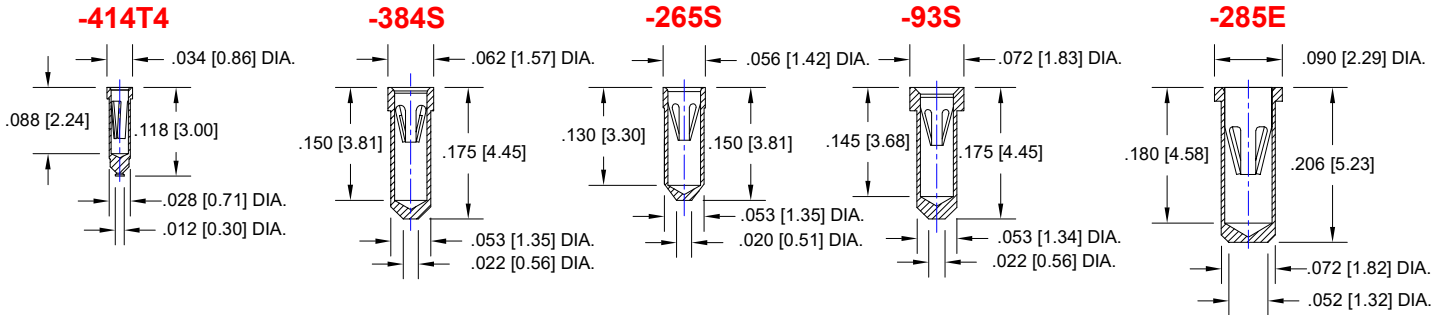
**Fig. 43 4 PIN**  
Thru-Hole: CSP4650-04-01-433E-R27-L14  
Surface Mount: CSP4650-04-01-285E-R27-L14

## Cross Section View Shown Units: in [mm]

### THRU HOLE OPTION



### SURFACE MOUNT OPTION



#### Material:

Insulator: Hi-Temp UL 94V-O  
Terminal: Brass, per ASTM-B16  
Contact: BeCu, Per ASTM-B194

Plating: RoHS COMPLIANT

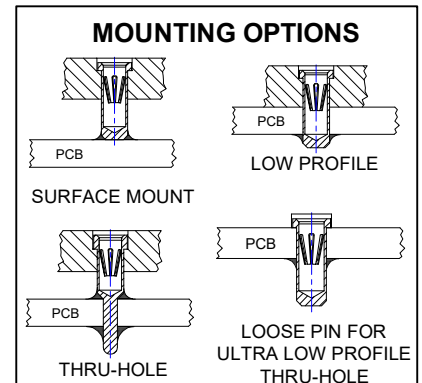
R27 TERMINAL: GOLD / CONTACT: GOLD

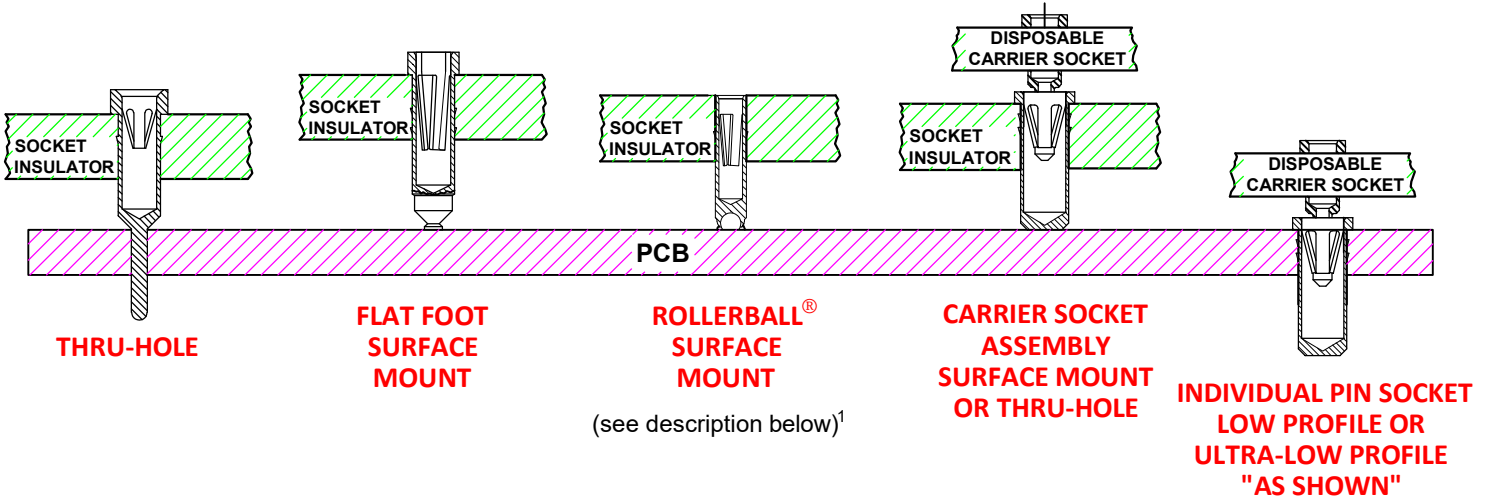
R17 TERMINAL: TIN / CONTACT: GOLD

OTHER PLATINGS AVAILABLE

#### Terminal Acceptance and Forces

Thru Hole Terminals				Surface Mount Terminals			
Thru Hole Terminal	Accepts Pin Diameter	Insertion Force	Withdrawal Force	Surface Mount Terminal	Accepts Pin Diameter	Insertion Force	Withdrawal Force
-400T4	Ø.012 [Ø0.30]	1.10 oz Max	0.3 oz Min	-414T4	Ø.012 [Ø0.30]	1.1 oz Max	0.3 oz Min
-211S	Ø.018 [Ø0.46]	9.0 oz Avg.	2.0 oz Min	-384S	Ø.018 [Ø0.46]	9.0 oz Avg.	2.0 oz Min
-75S	Ø.018 [Ø0.46]	9.0 oz Avg.	2.0 oz Min	-265S	Ø.018 [Ø0.46]	9.0 oz Avg.	2.0 oz Min
-01S	Ø.018 [Ø0.46]	9.0 oz Avg.	2.0 oz Min	-93S	Ø.018 [Ø0.46]	9.0 oz Avg.	2.0 oz Min
-433E	Ø.040 [Ø1.02]	36.0 oz Max	3.9 oz Min	-285E	Ø.040 [Ø1.02]	36.0 oz Max	3.9 oz Min

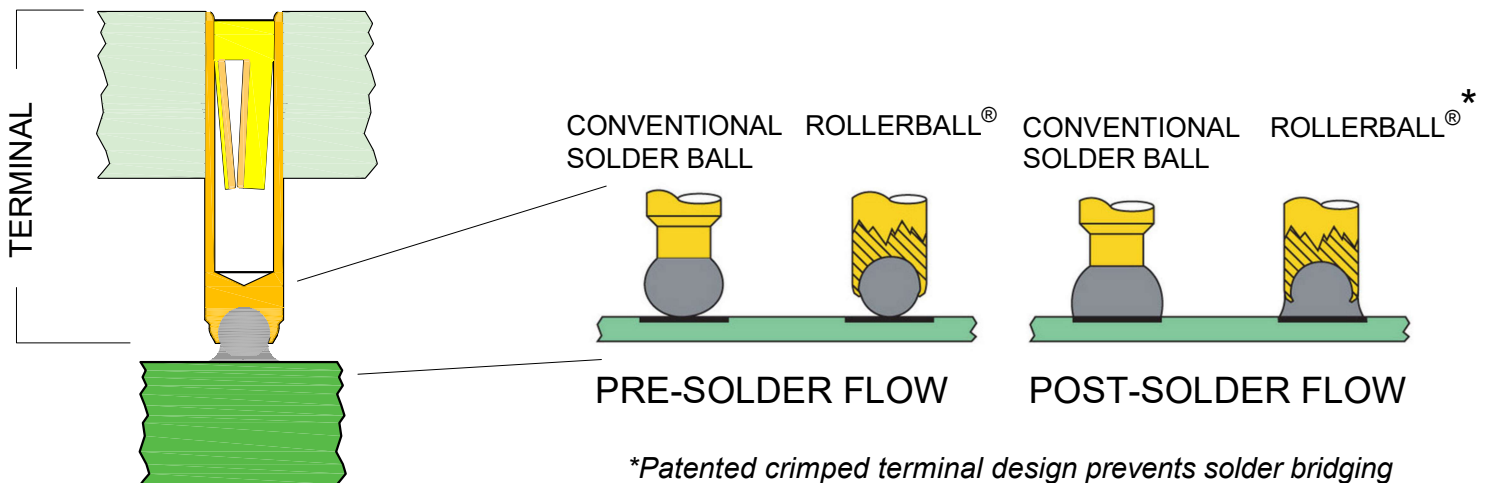




<sup>1</sup>Andon's patented Rollerball<sup>®</sup> socket terminal option provides more accurate soldering, a stronger connection, and improved electrical connectivity - especially under shock and vibration - than other solder ball terminal designs. Better yet, it can enable you to avoid expensive rework and scrap - especially with larger PCBs where coplanarity is an inherent challenge.

The bottom of these terminals has a radiused hole, to prevent gas entrapment. The terminal is crimped over the solder ball beyond its hemisphere, encapsulating it - leaving just enough of the solder ball exposed to provide sufficient solder without the solder bridging common in conventional solder ball terminal designs.

With this unique design, the critical distance between the terminal and the PC board pad is typically reduced from .036"-.040" to .018"-.022". As such, the solder becomes part of the "anchor" cross-section - providing additional mechanical strength to the connection, as well as improved electrical connectivity. Because it also provides controlled dispersion of solder, this encapsulated solder ball reduces the risk of solder bridging inherent in conventional solder ball terminal designs.



## For fast, accurate placement of SIP sockets and ultra-low profile terminals

**Phase 1:**  
Receive Carrier Assemblies designed to your pin layout.



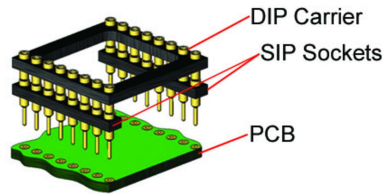
**Phase 2:**  
Place carrier assemblies onto PCB; run through your soldering process.



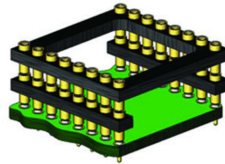
**Phase 3:**  
Remove carrier and plug in your device; discard carrier or send back to our factory for reloading.

### DIP

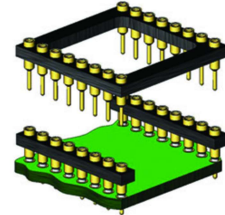
**Before Soldering**



**During Soldering**

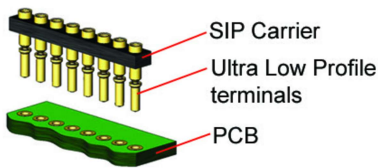


**After Soldering**

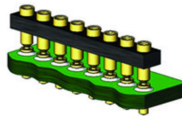


### ULTRA-LOW PROFILE SIP

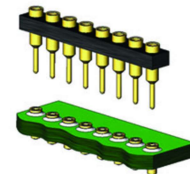
**Before Soldering**



**During Soldering**

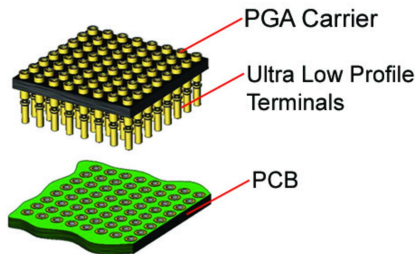


**After Soldering**

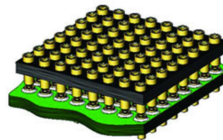


### ULTRA-LOW PROFILE PGA

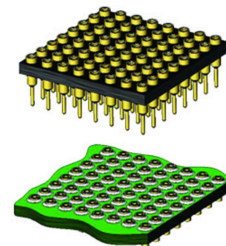
**Before Soldering**



**During Soldering**

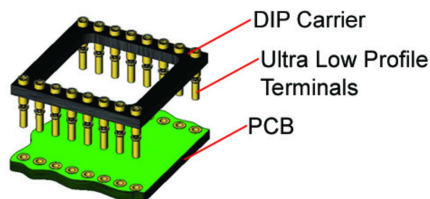


**After Soldering**

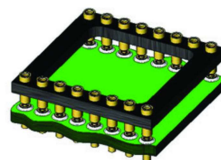


### ULTRA LOW PROFILE DIP

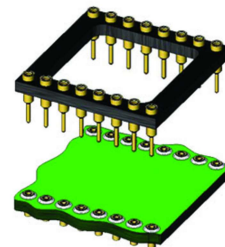
**Before Soldering**



**During Soldering**



**After Soldering**



Heat sink socket available to reduce heat and noise. Contact Andon for details.

Andon Proprietary Information  
RoHS Compliant

©Copyright 2026 Andon Electronics Corporation. All Rights Reserved. This material is protected under US and other copyrights and may not be copied, sold, or redistributed in any form without written permission of Andon Electronics Corporation. Copyrights and trademarks are property of their respective companies. We reserve the right to change specifications without notice. Andon makes no warranty, expressed or implied, as to the suitability of the sockets for the intended purpose.

\*Sockets are not drawn to scale OSI Optoelectronics, Inc. 05/14/2026