

OPTO DIODE CORPORATION SOCKETS						
OPTO DIODE CORP. Model Number	Andon Part Number Replace "XXX" with Terminal Type	Terminal Type		Pin Ø [in]	Figure Number	Page Number
		Thru-Hole	Surface Mount			
OD-100	R200-0403-02T-XXX-R15-L14	01S	93S	.018	3	2
OD-148W	R100-0402-01-XXX-R15-L14	75S	265S	.018	2	2
OD-20 ARRAY	C10-422-22-01-XXX-R27-L14	01S	93S	.018	1	2
OD-24F	R100-0402-01-XXX-R15-L14	75S	265S	.018	2	2
OD-470	R200-0403-02T-XXX-R15-L14	01S	93S	.018	3	2
OD-470L	R200-0403-02T-XXX-R15-L14	01S	93S	.018	3	2
OD-50L	R200-0403-02T-XXX-R15-L14	01S	93S	.018	3	2
OD-50W	R200-0403-02T-XXX-R15-L14	01S	93S	.018	3	2
OD-520	R200-0403-02T-XXX-R15-L14	01S	93S	.018	3	2
OD-521L	R200-0403-02T-XXX-R15-L14	01S	93S	.018	3	2
OD-620	R200-0403-02T-XXX-R15-L14	01S	93S	.018	3	2
OD-620L	R200-0403-02T-XXX-R15-L14	01S	93S	.018	3	2
OD-663	F325-0402-02-XXX-R15-L14	295V	439V	.030	6	2
OD-666	F325-0402-02-XXX-R15-L14	295V	439V	.030	6	2
OD-669	F325-0402-02-XXX-R15-L14	295V	439V	.030	6	2
OD-6FS	R100-0402-01-XXX-R15-L14	75S	265S	.018	2	2
OD-780W	R100-0402-01-XXX-R15-L14	75S	265S	.018	2	2
OD-870F	R100-0402-01-XXX-R15-L14	75S	265S	.018	2	2
OD-870L	R100-0402-01-XXX-R15-L14	75S	265S	.018	2	2
OD-870W	R100-0402-01-XXX-R15-L14	75S	265S	.018	2	2
OD-880	R100-0402-01-XXX-R15-L14	75S	265S	.018	2	2
OD-880E	R100-0402-01-XXX-R15-L14	75S	265S	.018	2	2
OD-880F	R100-0402-01-XXX-R15-L14	75S	265S	.018	2	2
OD-880F1	R100-0402-01-XXX-R15-L14	75S	265S	.018	2	2
OD-880FHT	R100-0402-01-XXX-R15-L14	75S	265S	.018	2	2
OD-880L	R100-0402-01-XXX-R15-L14	75S	265S	.018	2	2
OD-880LHT	R100-0402-01-XXX-R15-L14	75S	265S	.018	2	2
OD-880W	R100-0402-01-XXX-R15-L14	75S	265S	.018	2	2
OD-880WHT	R100-0402-01-XXX-R15-L14	75S	265S	.018	2	2
ODD-1	R100-0402-01-XXX-R15-L14	75S	265S	.018	2	2
ODD-12W	R100-0402-01-XXX-R15-L14	75S	265S	.018	2	2
ODD-15W	R200-0403-02T-XXX-R15-L14	01S	93S	.018	3	2
ODD-42W	R295-0403-01-XXX-R15-L14	01S	93S	.018	4	2
ODD-45W	R100-0403-01-XXX-R15-L14	75S	265S	.018	5	2
ODD-45WISOL	R100-0403-01-XXX-R15-L14	75S	265S	.018	5	2
ODD-5W	R200-0403-02T-XXX-R15-L14	01S	93S	.018	3	2
ODD-5WISOL	R200-0403-02T-XXX-R15-L14	01S	93S	.018	3	2
ODD-95W	R200-0403-02T-XXX-R15-L14	01S	93S	.018	3	2
ODD-95WISOL	R200-0403-02T-XXX-R15-L14	01S	93S	.018	3	2

OPTO DIODE CORPORATION *Continued*

Top View Shown

Units: in [mm]

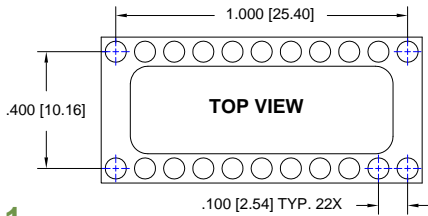
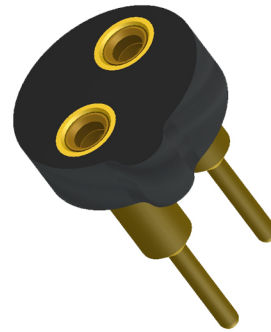


Fig.1

Thru-Hole: C10-422-22-01-01S-R27-L14
Surface Mount: C10-422-22-01-93S-R27-L14

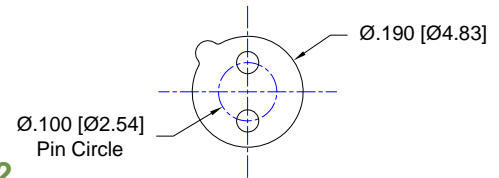


Fig.2

Thru-Hole: R100-0402-01-75S-R15-L14
Surface Mount: R100-0402-01-265S-R15-L14

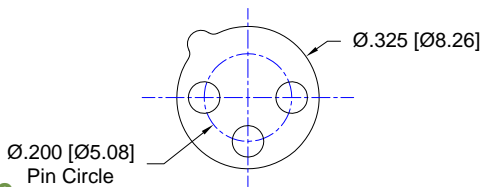


Fig.3

Thru-Hole: R200-0403-02T-01S-R15-L14
Surface Mount: R200-0403-02T-93S-R15-L14

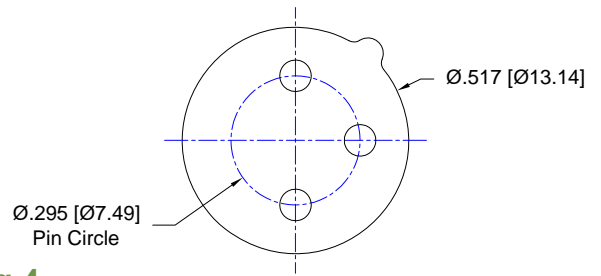


Fig.4

Thru-Hole: R295-0403-01-01S-R15-L14
Surface Mount: R295-0403-01-93S-R15-L14

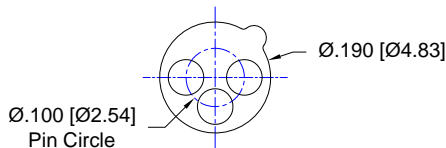


Fig.5

Thru-Hole: R100-0403-01-75S-R15-L14
Surface Mount: R100-0403-01-265S-R15-L14

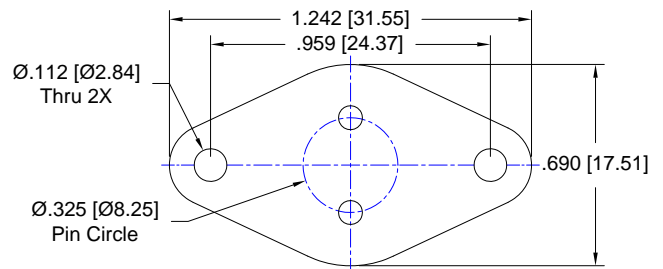
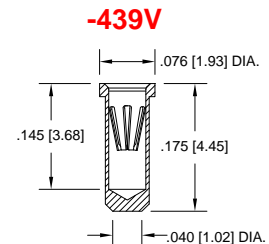
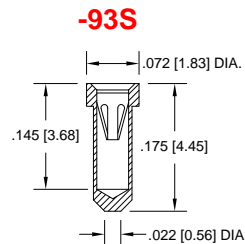
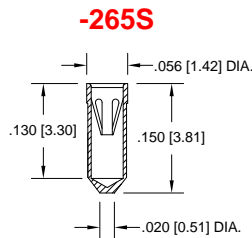
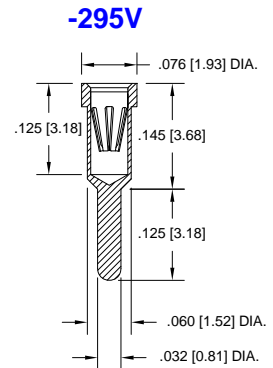
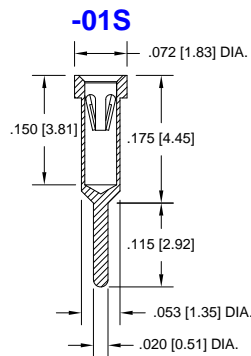
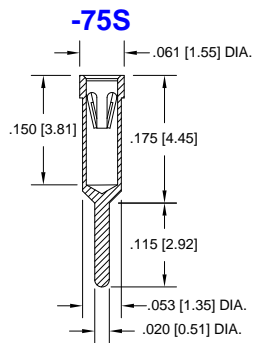


Fig.6

Thru-Hole: F325-0402-02-295V-R15-L14
Surface Mount: F325-0402-02-439V-R15-L14

OPTO DIODE CORPORATION *Continued*

Socket Terminal Details
Cross Section View Shown Units: in [mm]



Technical Information

Material:

Insulator: Hi-Temp UL 94V-O
Terminal: Brass, per ASTM-B16
Contact: BeCu, Per ASTM-B194

Plating: RoHS COMPLIANT

R27 TERMINAL: GOLD / CONTACT: GOLD

R17 TERMINAL: TIN / CONTACT: GOLD

OTHER PLATINGS AVAILABLE

Terminal Acceptance and Forces							
Thru Hole Terminals				Surface Mount Terminals			
Thru Hole Terminal	Accepts Pin Diameter	Insertion Force	Withdrawal Force	Surface Mount Terminal	Accepts Pin Diameter	Insertion Force	Withdrawal Force
-75S	Ø.018 [Ø1.46]	9.0 oz Avg.	2.0 oz Min	-265S	Ø.018 [Ø0.46]	9.0 oz Avg.	2.0 oz Min
-01S	Ø.018 [Ø0.46]	9.0 oz Avg.	2.0 oz Min	-93S	Ø.018 [Ø0.46]	9.0 oz Avg.	2.0 oz Min
-295V	Ø.030 [Ø0.76]	13.2 oz Max	3.5 oz Min	-439V	Ø.030 [Ø0.76]	13.2 oz Max	3.5 oz Min

MOUNTING OPTIONS

