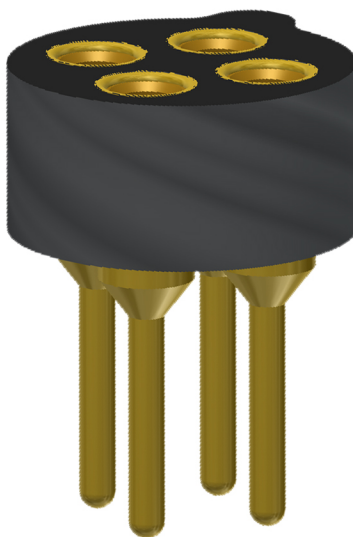




RoHS Compliant  
ISO 9001  
Certified

***HIGH RELIABILITY  
OPTOELECTRONIC SOCKETS FOR  
MELEXIS TECHNOLOGIES NV***

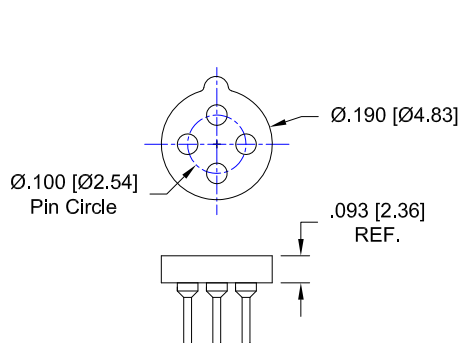


***Featuring Andon's Unique Senstac™ Contact***

MELEXIS TECHNOLOGIES NV® is a trade mark of  
MELEXIS TECHNOLOGIES NV

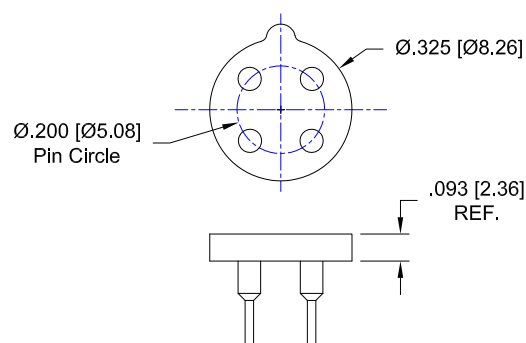
MELEXIS TECHNOLOGIES NV						
MELEXIS TECHNOLOGIES NV Model Number	Andon Part Number Replace "XXX" with Terminal Type	Terminal Type		Pin Ø [in]	Figure Number	Page Number
		Thru-Hole	Surface Mount			
MLX90247	R200-0404-01T-XXX-R27-L14	01S	93S	.018	2	1
MLX90255-BC	C10-005-05-01-XXX-R27-L14	01S	93S	.018	3	1
MLX90614	R200-0404-01T-XXX-R27-L14	01S	93S	.018	2	1
MLX90614XCC	R200-0404-01T-XXX-R27-L14	01S	93S	.018	2	1
MLX90614XCI	R200-0404-01T-XXX-R27-L14	01S	93S	.018	2	1
MLX90614XXA	R200-0404-01T-XXX-R27-L14	01S	93S	.018	2	1
MLX90615	R100-0404-01T-XXX-R27-L14	211S	384S	.018	1	1

See last page for other mounting types including low profile options.  
Heat sink socket available to reduce heat and noise. Contact Andon for details.



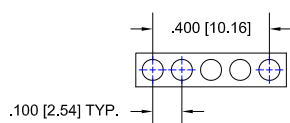
**FIG. 1**

Thru-Hole: R100-0404-01T-**211S**-R27-L14  
Surface Mount: R100-0404-01T-**384S**-R27-L14



**FIG. 2**

Thru-Hole: R200-0404-01T-**01S**-R27-L14  
Surface Mount: R200-0404-01T-**93S**-R27-L14

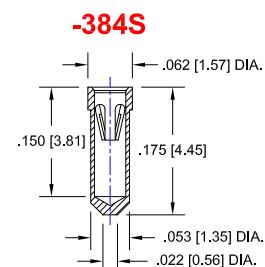
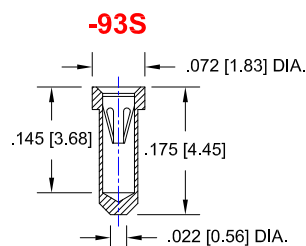
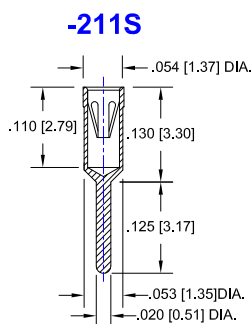
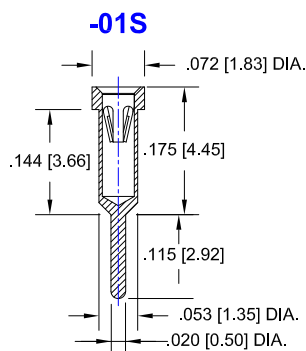


**FIG. 3**

Thru-Hole: C10-005-05-01-**01S**-R27-L14  
Surface Mount: C10-005-05-01-**93S**-R27-L14

## MELEXIS TECHNOLOGIES NV *Continued*

### Socket Terminal Details Cross Section View Shown Units: in [mm]



## Technical Information

### Material:

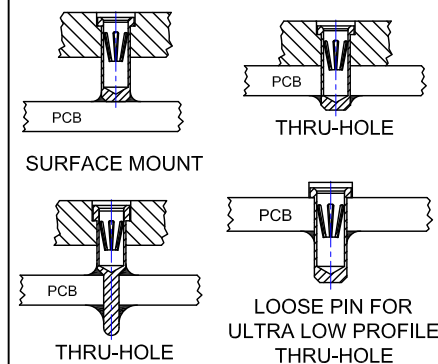
Insulator: Hi-Temp UL 94V-O  
Terminal: Brass, per ASTM-B16  
Contact: BeCu, Per ASTM-B194

**Plating: RoHS COMPLIANT**  
**R17 TERMINAL: MATTE TIN / CONTACT: GOLD**  
**R27 TERMINAL: GOLD / CONTACT: GOLD**  
**R32 TERMINAL: MATTE TIN / CONTACT: TIN**  
**OTHER PLATINGS AVAILABLE**

### Terminal Acceptance and Forces

Thru Hole Terminals				Surface Mount Terminals			
Thru Hole Terminal	Accepts Pin Diameter	Insertion Force	Withdrawal Force	Surface Mount Terminal	Accepts Pin Diameter	Insertion Force	Withdrawal Force
<b>-01S</b>	Ø.018 [Ø0.46]	9.0 oz Avg.	2.0 oz Min	<b>-93S</b>	Ø.018 [Ø0.46]	9.0 oz Avg.	2.0 oz Min
<b>-211S</b>	Ø.018 [Ø0.46]	9.0 oz Avg.	2.0 oz Min	<b>-384S</b>	Ø.018 [Ø0.46]	9.0 oz Avg.	2.0 oz Min

### MOUNTING OPTIONS



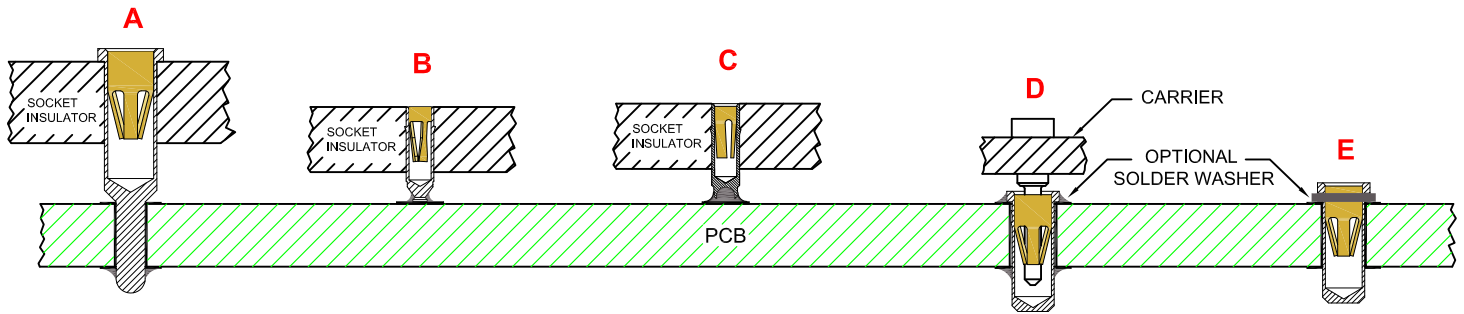
**"ANDON PROPRIETARY INFORMATION"**  
**RoHS Compliant**

©Copyright 2017 Andon Electronics Corporation. All Rights Reserved. This material is protected under US and other copyrights and may not be copied, sold, or redistributed in any form without written permission of Andon Electronics Corporation. Copyrights and trademarks are property of their respective companies. We reserve the right to change specifications without notice. Andon makes no warranty, expressed or implied, as to the suitability of the sockets for the intended purpose.

\*Sockets are not drawn to scale MELEXIS TECHNOLOGIES NV 4/3/2017

**ANDON ELECTRONICS CORPORATION**  
4 Court Drive, Lincoln RI 02865, United States of America

[www.andonelectronics.com](http://www.andonelectronics.com) or [www.andonelect.com](http://www.andonelect.com)  
Phone 401-333-0388 Fax 401-333-0287  
Email [Info@andonelect.com](mailto:Info@andonelect.com)



**THRU-HOLE  
SOCKET**

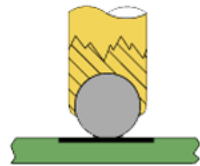
**SMD-SOCKET**

**SMD  
ROLLERBALL®  
SOCKET  
(PATENTED)**

**REMOVABLE  
CARRIER  
WITH ULTRA-LOW  
PROFILE PIN SOCKETS**

**INDIVIDUAL  
ULTRA-LOW PROFILE  
PIN SOCKETS  
(BEFORE SOLDERING)**

**ROLLERBALL®  
SOCKET**



**BEFORE SOLDERING**

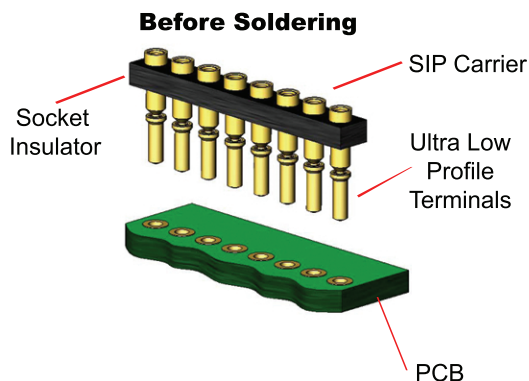
**ROLLERBALL®  
SOCKET**



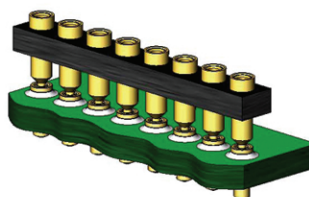
**AFTER SOLDERING**

**A more reliable solder joint for surface mount applications !**

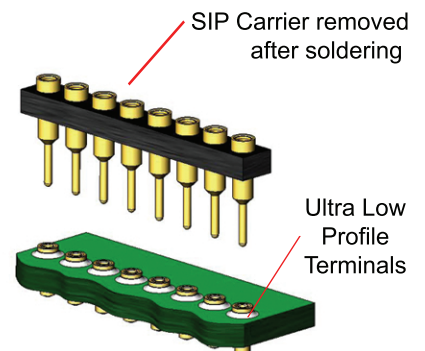
## **ULTRA LOW PROFILE SIP/DIP/PGA CARRIER ASSEMBLY See 'D' above**



**During Soldering**



**After Soldering**



**Available with or without solder washer**