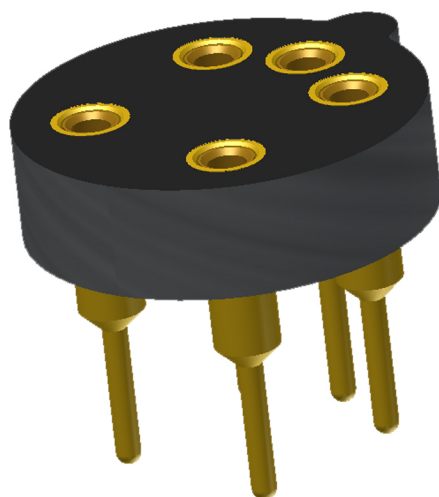




RoHS Compliant
ISO 9001
Certified

**HIGH RELIABILITY
OPTOELECTRONIC SOCKETS FOR
INFRATEC GMBH**

InfraTec



Featuring Andon's Unique Senstac™ Contact

INFRATEC GMBH is a trade mark of INFRATEC GMBH

INFRATEC GmbH						
Infratec GmbH IR Detector Number	Andon Part Number Replace "XXX" with Terminal Type	Terminal Type		Pin Ø [in]	Figure Number	Page Number
		Thru-Hole	Surface Mount			
LFP-3144C	R400-SP12-02T-XXX-R27-L14	01S	93S	.018	1	1
LFP-3850C	R400-SP12-02T-XXX-R27-L14	01S	93S	.018	1	1
LFP-5580C	R400-SP12-02T-XXX-R27-L14	01S	93S	.018	1	1
LFP-80105C	R400-SP12-02T-XXX-R27-L14	01S	93S	.018	1	1
LIE-200	R100-0404-02T-XXX-R27-L14	75S	265S	.018	5	2
LIE-202	R100-0404-02T-XXX-R27-L14	75S	265S	.018	5	2
LIE-216	R100-0404-02T-XXX-R27-L14	75S	265S	.018	5	2
LIE-312	R200-0403-02T-XXX-R27-L14	01S	93S	.018	3	2
LIE-312f	R200-0403-02T-XXX-R27-L14	01S	93S	.018	3	2
LIE-316	R200-0403-02T-XXX-R27-L14	01S	93S	.018	3	2
LIE-332f	R200-0403-02T-XXX-R27-L14	01S	93S	.018	3	2
LIM-011	R400-SP12-02T-XXX-R27-L14	01S	93S	.018	1	1
LIM-032	R200-0404-01T-XXX-R27-L14	01S	93S	.018	4	2
LIM-054	R400-SP08-01T-XXX-R27-L14	01S	93S	.018	6	2
LIM-214	R400-SP12-02T-XXX-R27-L14	01S	93S	.018	1	1
LIM-222	R200-0404-01T-XXX-R27-L14	01S	93S	.018	4	2
LIM-262	R200-0805-01T-XXX-R27-L14	75S	265S	.018	2	1
LIM-272	R200-0404-01T-XXX-R27-L14	01S	93S	.018	4	2
LIM-314	R400-SP12-02T-XXX-R27-L14	01S	93S	.018	1	1
LME-302	R200-0403-02T-XXX-R27-L14	01S	93S	.018	3	2
LME-316	R200-0403-02T-XXX-R27-L14	01S	93S	.018	3	2
LME-335	R200-0404-01T-XXX-R27-L14	01S	93S	.018	4	2
LME-336	R200-0403-02T-XXX-R27-L14	01S	93S	.018	3	2
LME-351	R200-0404-01T-XXX-R27-L14	01S	93S	.018	4	2
LME-352	R200-0403-02T-XXX-R27-L14	01S	93S	.018	3	2
LME-501	R200-0403-02T-XXX-R27-L14	01S	93S	.018	3	2
LME-551	R200-0404-01T-XXX-R27-L14	01S	93S	.018	4	2
LMM-244	R400-SP08-01T-XXX-R27-L14	01S	93S	.018	6	2
LMM-274	R400-SP08-01T-XXX-R27-L14	01S	93S	.018	6	2
LRM-102	R100-0404-02T-XXX-R27-L14	75S	265S	.018	5	2
LRM-202	R100-0404-02T-XXX-R27-L14	75S	265S	.018	5	2
LRM-254	R200-0808-01T-XXX-R27-L14	75S	265S	.018	7	2
LRM-284	R200-0808-01T-XXX-R27-L14	75S	265S	.018	7	2
XFP-3137	R400-SP12-02T-XXX-R27-L14	01S	93S	.018	1	1

See last page for other mounting types including low profile options.
Heat sink socket available to reduce heat and noise. Contact Andon for details.

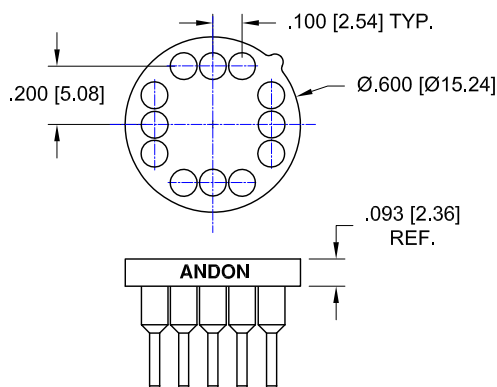


Fig.1

Thru-Hole: R400-SP12-02T-01S-R27-L14
Surface Mount: R400-SP12-02T-93S-R27-L14

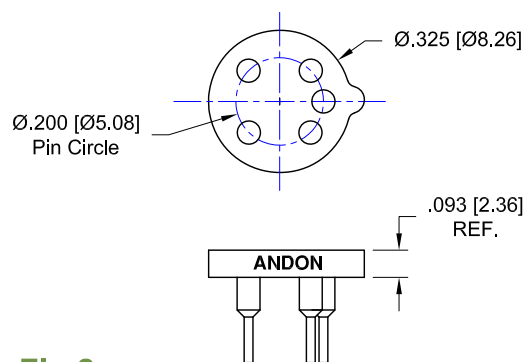


Fig.2

Thru-Hole: R200-0805-01T-75S-R27-L14
Surface Mount: R200-0805-01T-265S-R27-L14

INFRATEC GmbH Continued

Top View Shown

Units: in [mm]

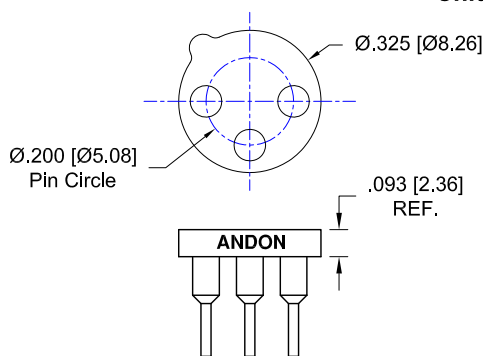


Fig.3

Thru-Hole: R200-0403-02T-**01S**-R27-L14
Surface Mount: R200-0403-02T-**93S**-R27-L14

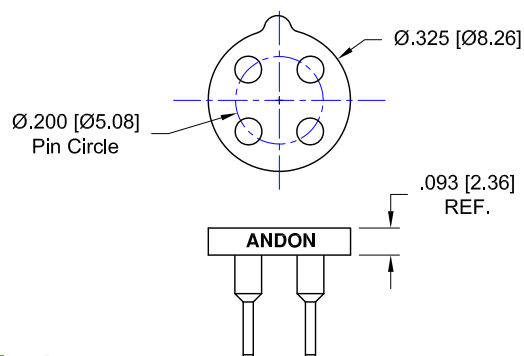


Fig.4

Thru-Hole: R200-0404-01T-**01S**-R27-L14
Surface Mount: R200-0404-01T-**93S**-R27-L14

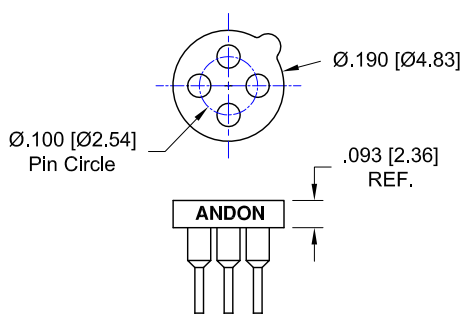


Fig.5

Thru-Hole: R100-0404-02T-**75S**-R27-L14
Surface Mount: R100-0404-02T-**265S**-R27-L14

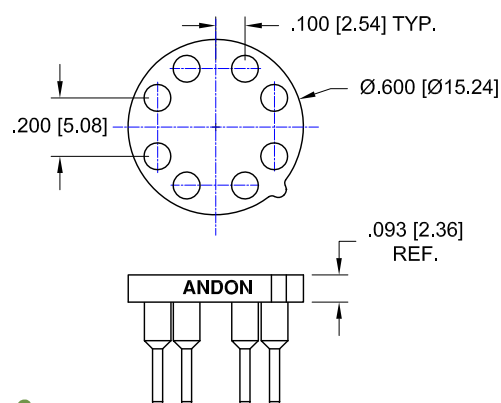


Fig.6

Thru-Hole: R400-SP08-01T-**01S**-R27-L14
Surface Mount: R400-SP08-01T-**93S**-R27-L14

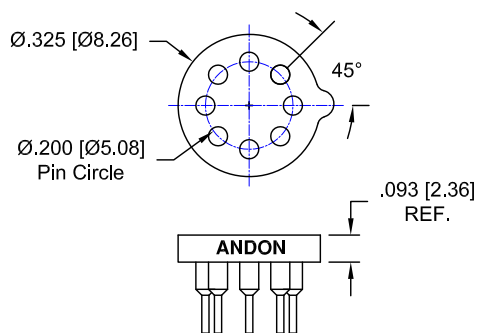
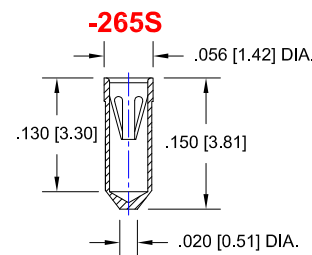
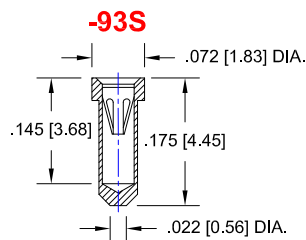
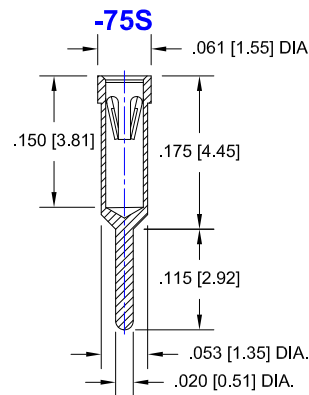
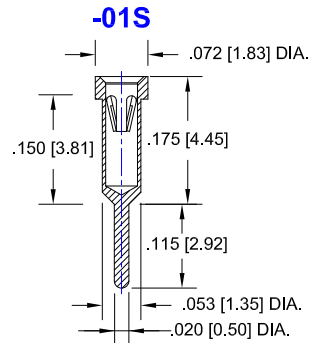


Fig.7

Thru-Hole: R200-0808-01T-**75S**-R27-L14
Surface Mount: R200-0808-01T-**265S**-R27-L14

INFRATEC GmbH *Continued* Socket Terminal Details Cross Section View Shown Units: in [mm]



Technical Information

Material:

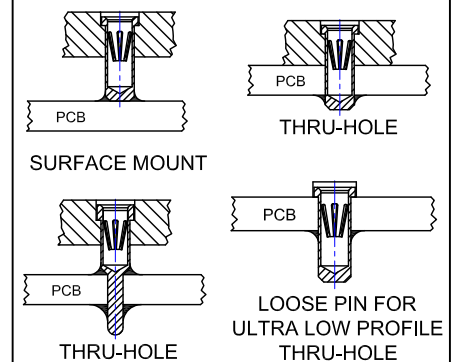
Insulator: Hi-Temp UL 94V-O
Terminal: Brass, per ASTM-B16
Contact: BeCu, Per ASTM-B194

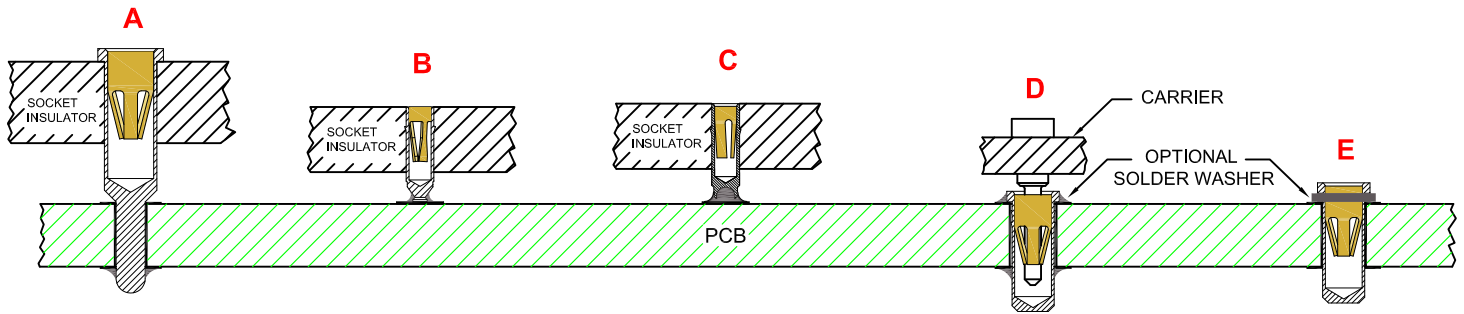
Plating: RoHS COMPLIANT
R17 TERMINAL: MATTE TIN / CONTACT: GOLD
R27 TERMINAL: GOLD / CONTACT: GOLD
R32 TERMINAL: MATTE TIN / CONTACT: TIN
OTHER PLATINGS AVAILABLE

Terminal Acceptance and Forces

Thru Hole Terminals				Surface Mount Terminals			
Thru Hole Terminal	Accepts Pin Diameter	Insertion Force	Withdrawal Force	Surface Mount Terminal	Accepts Pin Diameter	Insertion Force	Withdrawal Force
-01S	Ø.018 [Ø0.46]	9.0 oz Avg.	2.0 oz Min	-93S	Ø.018 [Ø0.46]	9.0 oz Avg.	2.0 oz Min
-75S	Ø.018 [Ø0.46]	9.0 oz Avg.	2.0 oz Min	-265S	Ø.018 [Ø0.46]	9.0 oz Avg.	2.0 oz Min

MOUNTING OPTIONS





**THRU-HOLE
SOCKET**

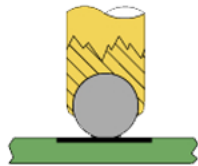
SMD-SOCKET

**SMD
ROLLERBALL®
SOCKET
(PATENTED)**

**REMOVABLE
CARRIER
WITH ULTRA-LOW
PROFILE PIN SOCKETS**

**INDIVIDUAL
ULTRA-LOW PROFILE
PIN SOCKETS
(BEFORE SOLDERING)**

**ROLLERBALL®
SOCKET**



BEFORE SOLDERING

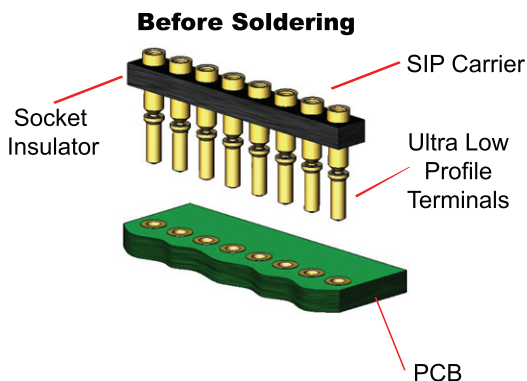
**ROLLERBALL®
SOCKET**



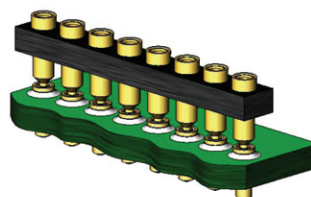
AFTER SOLDERING

A more reliable solder joint for surface mount applications !

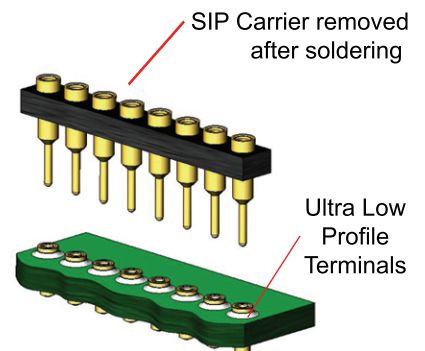
ULTRA LOW PROFILE SIP/DIP/PGA CARRIER ASSEMBLY See 'D' above



During Soldering



After Soldering



Available with or without solder washer