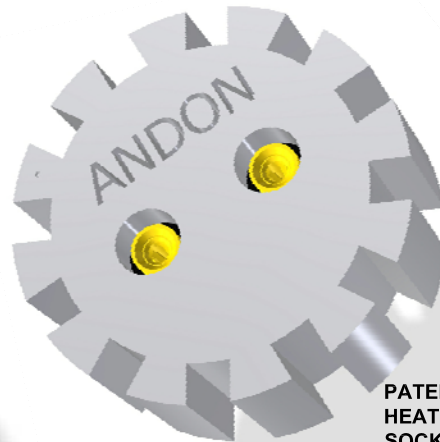


***High-Reliability
OptoElectronic Sensor Sockets
for HELIOWORKS, Inc.***



SOCKET
WITHOUT
HEATSINK
FEATURE



PATENTED
HEATSINK
SOCKET™

Featuring Andon's Unique Senstac[™] Contact

Sockets

| HELIOWORKS | | | | | | |
|----------------------------|---|---------------|------------------|---------------|------------------|----------------|
| HELIOWORKS Model Number | Andon Part Number Replace "XXX" with Terminal Type | Terminal Type | | Pin Ø [in] | Figure Number | Page Number |
| | | Thru-Hole | Surface Mount | | | |
| EF-852x | R375-SP04-01T-XXX-R27-L14 | -01S | -93S | 0.018 | 4 | 2 |
| EF-853x | R375-SP04-01T-XXX-R27-L14 | -01S | -93S | 0.018 | 4 | 2 |
| EK-343x | F500-1402-01-XXX-R27-L14 | -433E | -285E | .040 | 3 | 2 |
| EK-527x | R200-0402-02T-XXX-R27-L14 | -01S | -93S | .018 | 1 | 2 |
| EK-537x | R200-0402-02T-XXX-R27-L14 | -01S | -93S | .018 | 1 | 2 |
| EK-827x | R437-0402-01T-XXX-R27-L14 | -01S | -93S | .018 | 2 | 2 |
| EK-837x | R437-0402-01T-XXX-R27-L14 | -01S | -93S | .018 | 2 | 2 |
| EK-852x | R437-0402-01T-XXX-R27-L14 | -01S | -93S | .018 | 2 | 2 |
| EK-862x | R437-0402-01T-XXX-R27-L14 | -01S | -93S | .018 | 2 | 2 |
| EP-3872 | R437-0402-01T-XXX-R27-L14 | -01S | -93S | .018 | 2 | 2 |
| EP-3962 | R437-0402-01T-XXX-R27-L14 | -01S | -93S | .018 | 2 | 2 |
| EP-3963 | R437-0402-01T-XXX-R27-L14 | -01S | -93S | .018 | 2 | 2 |
| EP-3964 | R437-0402-01T-XXX-R27-L14 | -01S | -93S | .018 | 2 | 2 |
| EP-3965 | R437-0402-01T-XXX-R27-L14 | -01S | -93S | .018 | 2 | 2 |
| EP-4317 | R437-0402-01T-XXX-R27-L14 | -01S | -93S | .018 | 2 | 2 |
| EVF-555x | R200-0402-02T-XXX-R27-L14 | -01S | -93S | .018 | 1 | 2 |

See last page for other mounting types including low profile options.

Patented Heat Sink Sockets[™] (socket w/ht heat slnk feature)

| HELIOWORKS | | | | | | |
|----------------------------|---|---------------|------------------|---------------|------------------|----------------|
| HELIOWORKS Model Number | Andon Part Number Replace "XXX" with Terminal Type | Terminal Type | | Pin Ø [in] | Figure Number | Page Number |
| | | Thru-Hole | Surface Mount | | | |
| EF-852x | R375-SP04-01-XXX-R27-L14-HS1 | -01S | - | .018 | 8 | 3 |
| EF-853x | R375-SP04-01-XXX-R27-L14-HS1 | -01S | - | .018 | 8 | 3 |
| EK-343x | F500-1402-01-XXX-R27-L14-HS1 | -433E | - | .040 | 6 | 3 |
| EK-527x | R200-0402-01-XXX-R27-L14-HS1 | -01S | - | .018 | 7 | 3 |
| EK-537x | R200-0402-01-XXX-R27-L14-HS1 | -01S | - | .018 | 7 | 3 |
| EK-827x | R437-0402-01T-XXX-R27-L14-HS1 | -01S | - | .018 | 5 | 3 |
| EK-837x | R437-0402-01T-XXX-R27-L14-HS1 | -01S | - | .018 | 5 | 3 |
| EK-852x | R437-0402-01T-XXX-R27-L14-HS1 | -01S | - | .018 | 5 | 3 |
| EK-862x | R437-0402-01T-XXX-R27-L14-HS1 | -01S | - | .018 | 5 | 3 |
| EP-3872 | R437-0402-01T-XXX-R27-L14-HS1 | -01S | - | .018 | 5 | 3 |
| EP-3962 | R437-0402-01T-XXX-R27-L14-HS1 | -01S | - | .018 | 5 | 3 |
| EP-3963 | R437-0402-01T-XXX-R27-L14-HS1 | -01S | - | .018 | 5 | 3 |
| EP-3964 | R437-0402-01T-XXX-R27-L14-HS1 | -01S | - | .018 | 5 | 3 |
| EP-3965 | R437-0402-01T-XXX-R27-L14-HS1 | -01S | - | .018 | 5 | 3 |
| EP-4317 | R437-0402-01T-XXX-R27-L14-HS1 | -01S | - | .018 | 5 | 3 |
| EVF-555x | R200-0402-01-XXX-R27-L14-HS1 | -01S | - | .018 | 7 | 3 |

HELIOWORKS Continued

Top View Shown

Units: in [mm]

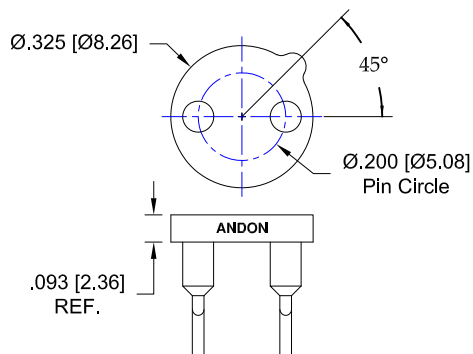


FIG. 1

Thru-Hole: R200-0402-02T-01S-R27-L14

Surface Mount: R200-0402-02T-93S-R27-L14

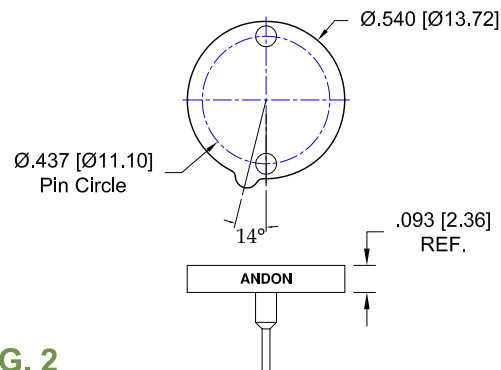


FIG. 2

Thru-Hole: R437-0402-01T-01S-R27-L14

Surface Mount: R437-0402-01T-93S-R27-L14

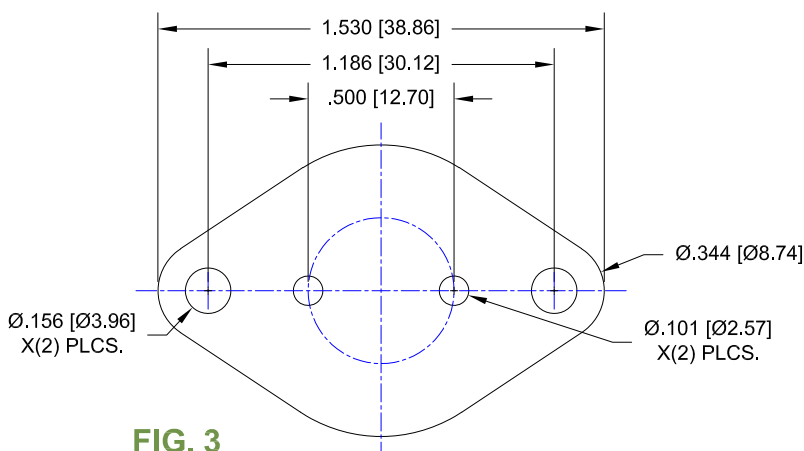


FIG. 3

Thru-Hole: F500-1402-01-433E-R27-L14

Surface Mount: F500-1402-01-285E-R27-L14

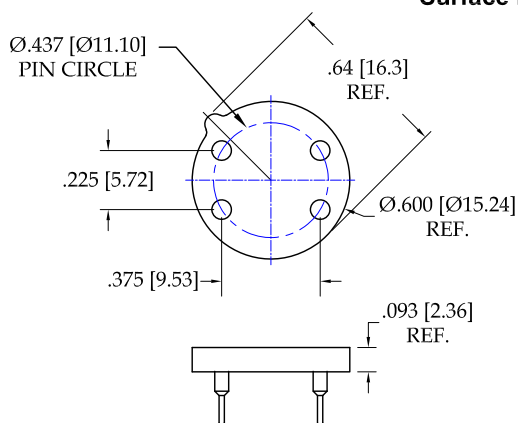


FIG. 4

Thru-Hole: R375-SP04-01T-01S-R27-L14

Surface Mount: R375-SP04-01T-93S-R27-L14

HELIOWORKS Continued

Top View Shown

Units: in [mm]

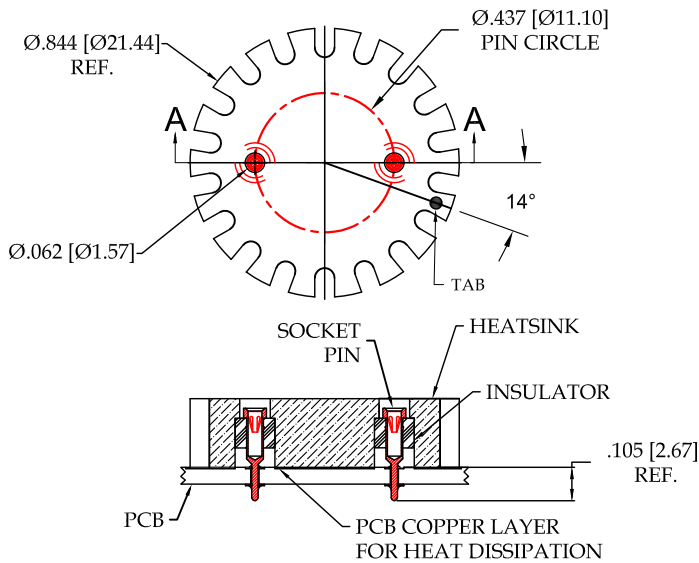


FIG. 5

Thru-Hole: R437-0402-01T-01S-R27-L14-HS1

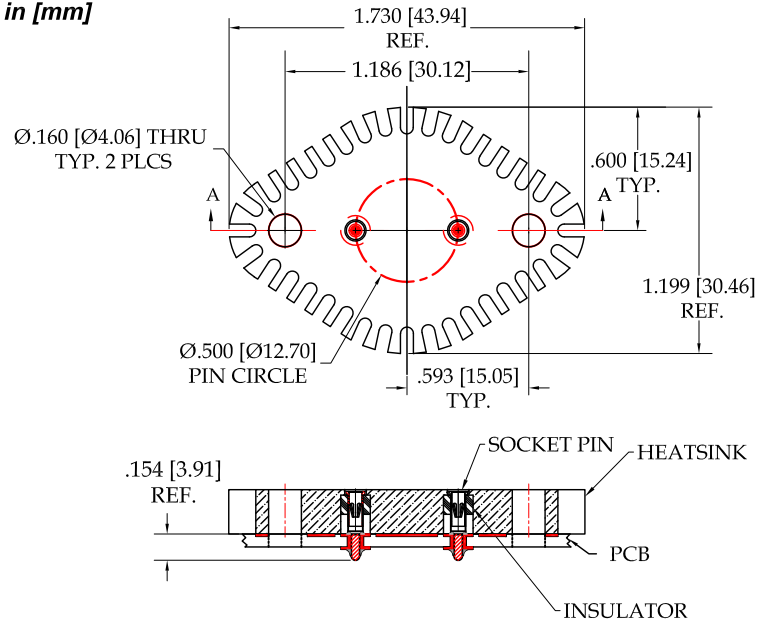


FIG. 6

Thru-Hole: F500-SP02-01-433E-R27-L14-HS1

PATENTED

PATENTED

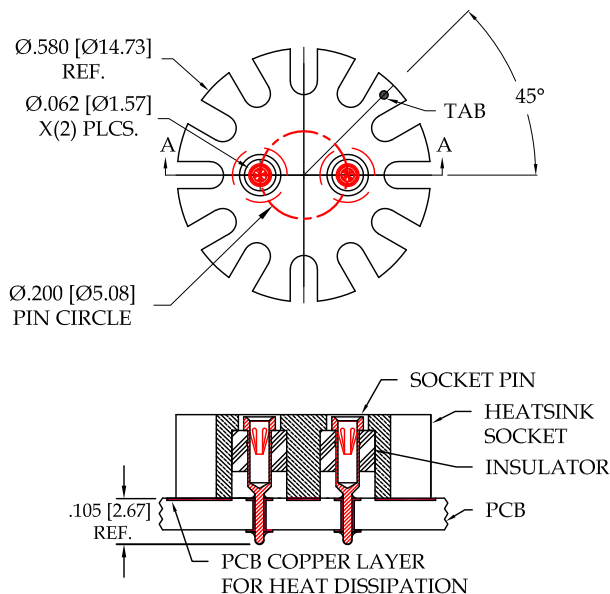


FIG. 7

Thru-Hole: R200-0402-01-01S-R27-L14-HS1

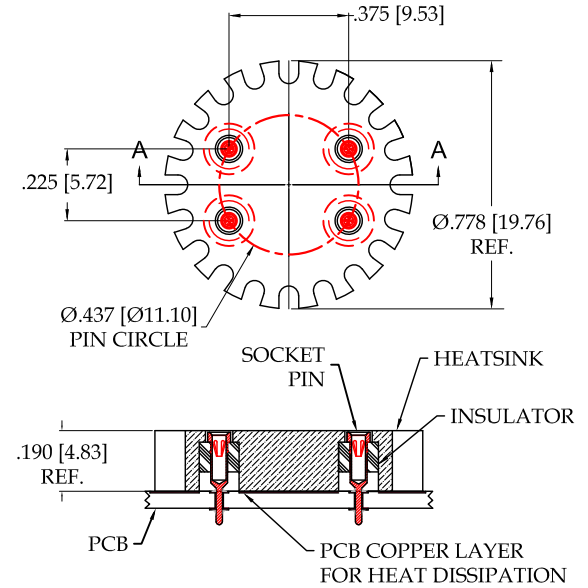


FIG. 8

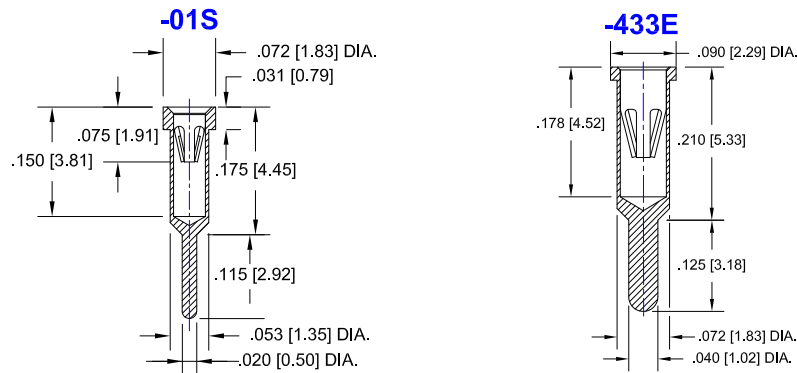
Thru-Hole: R375-SP04-01-01S-R27-L14-HS1

HELIOWORKS *Continued*

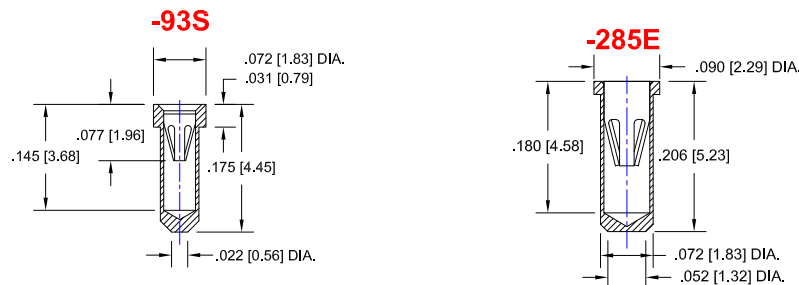
Socket Terminal Details

Cross Section View Shown Units: in [mm]

THRU HOLE OPTION



SURFACE MOUNT OPTION



Technical Information

Material:

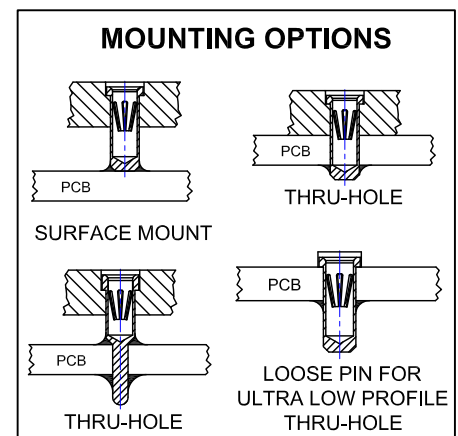
Insulator: Hi-Temp UL 94V-O
Terminal: Brass, per ASTM-B16
Contact: BeCu, Per ASTM-B194

Plating: RoHS COMPLIANT

R27 TERMINAL: GOLD / CONTACT: GOLD
R29 TERMINAL: MATTE TIN / CONTACT: GOLD
R32 TERMINAL: MATTE TIN / CONTACT: TIN
OTHER PLATINGS AVAILABLE

| Terminal Acceptance and Forces | | | | | | | |
|--------------------------------|----------------------|-----------------|------------------|-------------------------|----------------------|-----------------|------------------|
| Thru Hole Terminals | | | | Surface Mount Terminals | | | |
| Thru Hole Terminal | Accepts Pin Diameter | Insertion Force | Withdrawal Force | Surface Mount Terminal | Accepts Pin Diameter | Insertion Force | Withdrawal Force |
| -01S | Ø.018 [Ø0.46] | 9.00 oz Max | 2.00 oz Min | -93S | Ø.018 [Ø0.46] | 9.00 oz Max | 2.00 oz Min |
| -433E | Ø.040 [Ø1.02] | 36.00 oz Max | 3.88 oz Min | -285E | Ø.040 [Ø1.02] | 36.00 oz Max | 3.88 oz Min |

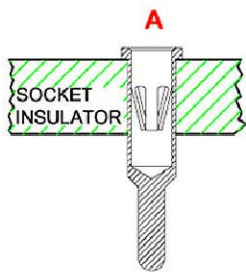
©Copyright 2019 Andon Electronics Corporation. All Rights Reserved. This material is protected under US and other copyrights and may not be copied, sold, or redistributed in any form without written permission of Andon Electronics Corporation. Copyrights and trademarks are property of their respective companies. We reserve the right to change specifications without notice. Andon makes no warranty, expressed or implied, as to the suitability of the sockets for the intended purpose.



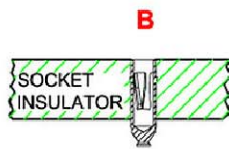
"ANDON PROPRIETARY INFORMATION"
RoHS Compliant

*Sockets are not drawn to scale HELIOWORKS INC. 10/30/2019

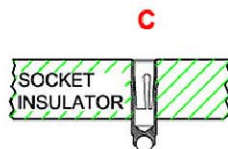
Mounting Options



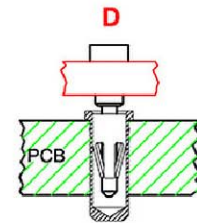
THRU-HOLE



**SURFACE
MOUNT
FLAT FOOT**



**SURFACE
MOUNT
ROLLERBALL®**



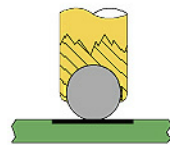
PCB FOR THRU-HOLE
INSULATOR FOR SMD

**CARRIER
ASSEMBLY
WITH OR WITHOUT
SOLDER
WASHER**



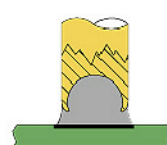
**INDIVIDUAL
PIN SOCKET
WITH OR WITHOUT
SOLDER
WASHER**

ROLLERBALL®
SOCKET



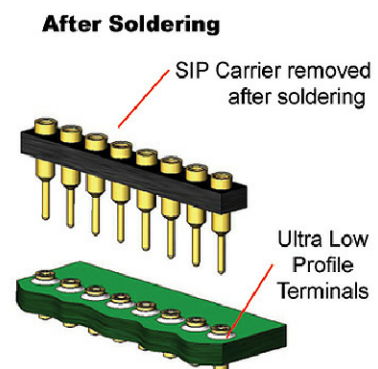
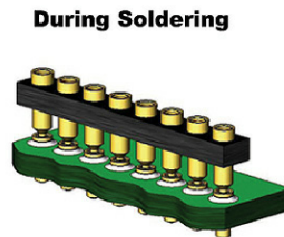
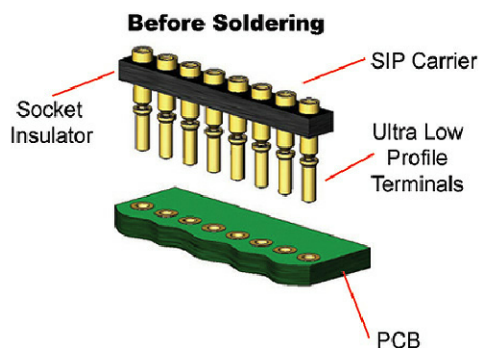
BEFORE SOLDERING

ROLLERBALL®
SOCKET



AFTER SOLDERING

ULTRA LOW PROFILE SIP/DIP/PGA CARRIER ASSEMBLY



Available with or without solder washer