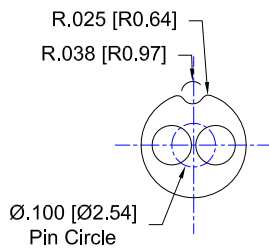
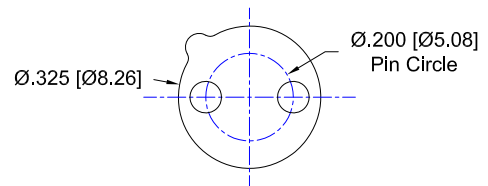


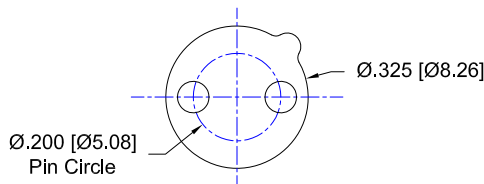
EPIGAP OPTRONIC GMBH						
EPIGAP OPTRONIC GMBH Model Number	Andon Part Number Replace "XXX" with Terminal Type	Terminal Type		Pin Ø [in]	Figure Number	Page Number
		Thru-Hole	Surface Mount			
EOLD-630-323	R100-0402-05N-XXX-R27-L14	75S	265S	.018	4	1
EOLD-370-012	R200-0402-01T-XXX-R27-L14	01S	93S	.018	3	1
EOLD-265-TO	R200-0402-01T-XXX-R27-L14	01S	93S	.018	3	1
EOLD-280-TO	R200-0402-01T-XXX-R27-L14	01S	93S	.018	3	1
EOPD-270-0-0.3-2	R200-0402-01T-XXX-R27-L14	01S	93S	.018	3	1
EOPD-280-0-0.3-2-1	R200-0402-01T-XXX-R27-L14	01S	93S	.018	3	1
EOPD-310-0-0.3-2	R200-0402-01T-XXX-R27-L14	01S	93S	.018	3	1
EOPD-360-0-0.3-2	R200-0402-01T-XXX-R27-L14	01S	93S	.018	3	1
EOLD-470-013-2	R100-0402-06T-XXX-R27-L14	211S	384S	.018	5	2
EOLD-650-013	R100-0402-06T-XXX-R27-L14	211S	384S	.018	5	2
EOLD-370-012	R100-0402-06T-XXX-R27-L14	211S	384S	.018	5	2
EOLD-365-012	R100-0402-06T-XXX-R27-L14	211S	384S	.018	5	2
EOLD-400-535	R100-0402-06T-XXX-R27-L14	211S	384S	.018	5	2
EPD-365-0-1.4	R100-0402-06T-XXX-R27-L14	211S	384S	.018	5	2
EPD-150-0-2.5	R200-0402-02T-XXX-R27-L14	01S	93S	.018	2	1
EPD-440-0-2.5	R200-0402-02T-XXX-R27-L14	01S	93S	.018	2	1
EPD-150-0-3.6	R200-0402-02T-XXX-R27-L14	01S	93S	.018	2	1
EOLD-355-525	R100-0202-01N-XXX-R27-L14	433E	285E	.040	1	1
EOLD-365-525	R100-0202-01N-XXX-R27-L14	433E	285E	.040	1	1
EPD-660-5-0.5	R100-0202-01N-XXX-R27-L14	433E	285E	.040	1	1
EPD-660-5-0.9	R100-0202-01N-XXX-R27-L14	433E	285E	.040	1	1
EPOD-1300-5-0.3	R100-0202-01N-XXX-R27-L14	433E	285E	.040	1	1
EOLD-400-535	R100-0202-01N-XXX-R27-L14	433E	285E	.040	1	1
EOLD-375-525	R100-0202-01N-XXX-R27-L14	433E	285E	.040	1	1
EOLD-375-545 HP	R100-0202-01N-XXX-R27-L14	433E	285E	.040	1	1
EOLD-400-545 HP	R100-0202-01N-XXX-R27-L14	433E	285E	.040	1	1
EOLD-385-535	R100-0202-01N-XXX-R27-L14	433E	285E	.040	1	1
EOLD-365-525	R100-0202-01N-XXX-R27-L14	433E	285E	.040	1	1
EOLD-630-343	R100-0402-05N-XXX-R27-L14	75S	265S	.018	4	1



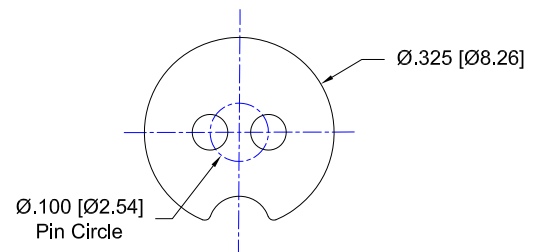
**FIG: 1**  
**Thru-Hole:** R100-0202-01N-433E-R27-L14  
**Surface Mount:** R100-0202-01N-285E-R27-L14



**FIG: 2**  
**Thru-Hole:** R200-0402-02T-01S-R27-L14  
**Surface Mount:** R200-0402-02T-93S-R27-L14



**FIG: 3**  
**Thru-Hole:** R200-0402-01T-01S-R27-L14  
**Surface Mount:** R200-0402-01T-93S-R27-L14

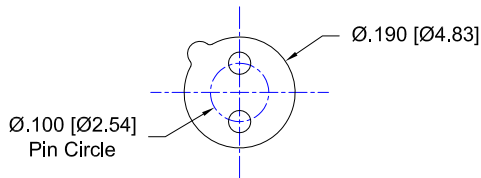


**FIG: 4**  
**Thru-Hole:** R100-0402-05N-75S-R27-L14  
**Surface Mount:** R100-0402-05N-265S-R27-L14

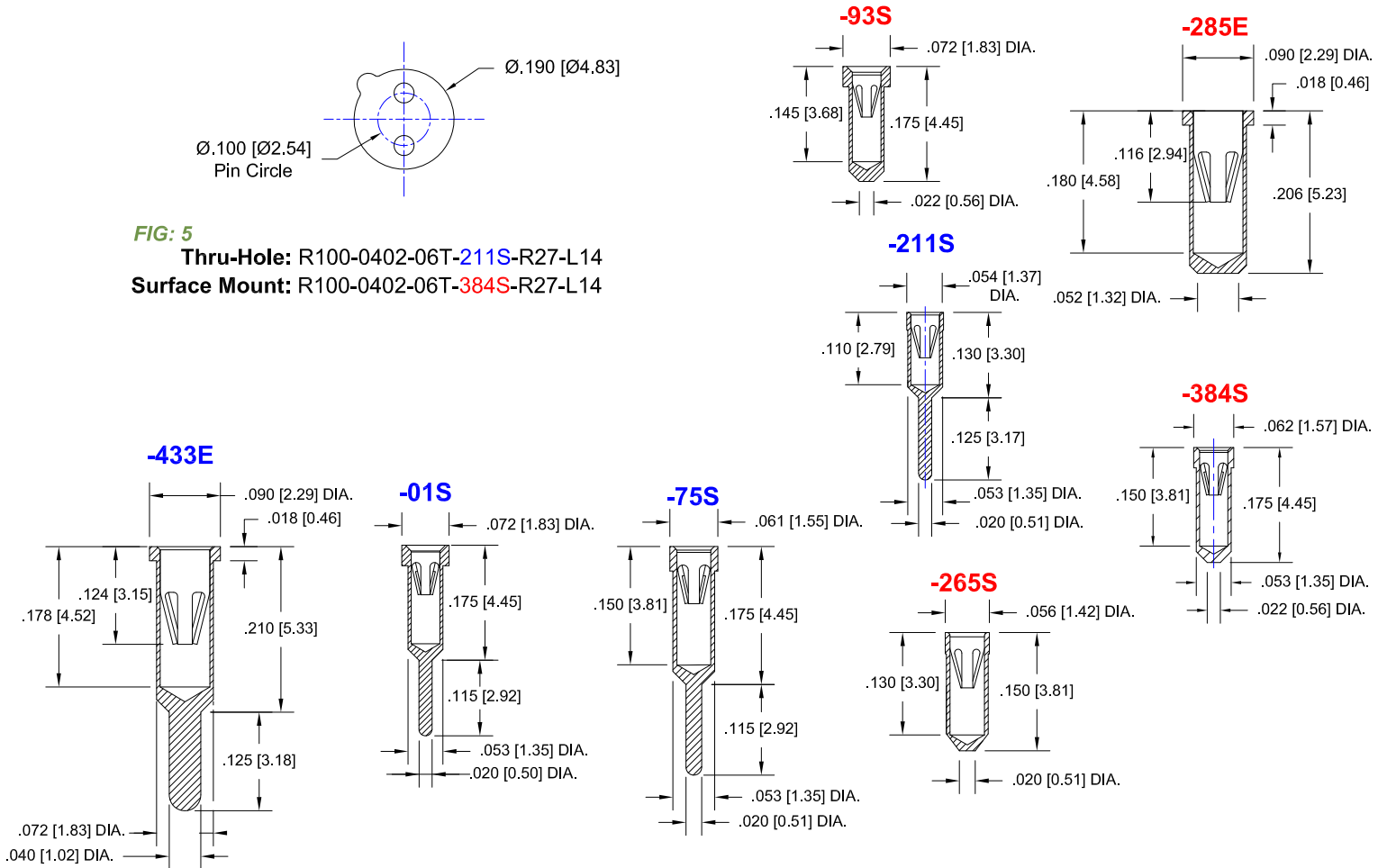
## EPIGAP OPTRONIC GMBH *Continued*

### Socket Terminal Details

Cross Section View Shown Units: in [mm]



**FIG: 5**  
Thru-Hole: R100-0402-06T-211S-R27-L14  
Surface Mount: R100-0402-06T-384S-R27-L14



## Technical Information

### Material:

Insulator: Hi-Temp UL 94V-0  
Terminal: Brass, per ASTM-B16  
Contact: BeCu, Per ASTM-B194

### Plating: RoHS COMPLIANT

R15 TERMINAL: GOLD / CONTACT: GOLD

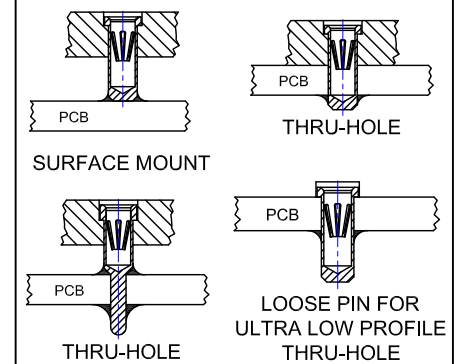
R17 TERMINAL: TIN / CONTACT: GOLD

OTHER PLATINGS AVAILABLE

### Terminal Acceptance and Forces

Thru Hole Terminals				Surface Mount Terminals			
Thru Hole Terminal	Accepts Pin Diameter	Insertion Force	Withdrawal Force	Surface Mount Terminal	Accepts Pin Diameter	Insertion Force	Withdrawal Force
-01S	Ø.018 [Ø0.46]	9.0 oz Avg.	2.0 oz Min	-93S	Ø.018 [Ø0.46]	9.0 oz Avg.	2.0 oz Min
-433E	Ø.040 [Ø1.02]	36.0 oz Avg.	3.9 oz Min	-285E	Ø.040 [Ø1.02]	36.0 oz Avg.	3.9 oz Min
-211S	Ø.018 [Ø0.46]	9.0 oz Avg.	2.0 oz Min	-384S	Ø.018 [Ø0.46]	9.0 oz Avg.	2.0 oz Min
-75S	Ø.018 [Ø0.46]	9.0 oz Avg.	2.0 oz Min	-265S	Ø.018 [Ø0.46]	9.0 oz Avg.	2.0 oz Min

### MOUNTING OPTIONS



©Copyright 2015 Andon Electronics Corporation. All Rights Reserved. This material is protected under US and other copyrights and may not be copied, sold, or redistributed in any form without written permission of Andon Electronics Corporation. Copyrights and trademarks are property of their respective companies. We reserve the right to change specifications without notice. Andon makes no warranty, expressed or implied, as to the suitability of the sockets for the intended purpose.

"ANDON PROPRIETARY INFORMATION"

RoHS Compliant

\*Sockets are not drawn to scale EPIGAP OPTRONIC GMBH 4/7/2015