

Centronic Sensors Sockets						
Centronic Sensors Model Number	Andon Part Number Replace "XXX" with Terminal Type	Terminal Type		Pin Ø [in]	Figure Number	Page Number
		Thru-Hole	Surface Mount			
AEPX008	R100-0403-02T-XXX-R27-L14	75S	265S	.018	2	2
AEPX04	R100-0403-02T-XXX-R27-L14	75S	265S	.018	2	2
AEPX10	R100-0403-02T-XXX-R27-L14	75S	265S	.018	2	2
AEPX20	R100-0403-02T-XXX-R27-L14	75S	265S	.018	2	2
AEPX35	R100-0403-02T-XXX-R27-L14	75S	265S	.018	2	2
AEPX65	R100-0403-02T-XXX-R27-L14	75S	265S	.018	2	2
AEPX65R2F	R100-0403-02T-XXX-R27-L14	75S	265S	.018	2	2
AX65R2F	R100-0403-02T-XXX-R27-L14	75S	265S	.018	2	2
BPX65	R100-0402-02T-XXX-R27-L14	75S	265S	.018	1	2
BPX65RT	R100-0403-02T-XXX-R27-L14	75S	265S	.018	2	2
BPX65T	R100-0402-02T-XXX-R27-L14	75S	265S	.018	1	2
LD2A-0	R200-0403-02T-XXX-R27-L14	01S	93S	.018	4	3
LD2A-1	R200-0403-02T-XXX-R27-L14	01S	93S	.018	4	3
LD2A-5T	R200-0403-02T-XXX-R27-L14	01S	93S	.018	4	3
LD2B-0	R200-0403-02T-XXX-R27-L14	01S	93S	.018	4	3
LD2B-1	R200-0403-02T-XXX-R27-L14	01S	93S	.018	4	3
LD2B-5T	R200-0403-02T-XXX-R27-L14	01S	93S	.018	4	3
LD2C-5T	R100-0403-02T-XXX-R27-L14	75S	265S	.018	2	3
LD4C-5T	R200-0606-04T-XXX-R27-L14	75S	265S	.018	6	3
OSD1.2-7	R100-0402-02T-XXX-R27-L14	75S	265S	.018	1	2
OSD1.0	R100-0402-02T-XXX-R27-L14	75S	265S	.018	1	2
OSD100-0	R750-1806-01T-XXX-R27-L14	01S	93S	.018	11	4
OSD100-1	R750-1806-01T-XXX-R27-L14	01S	93S	.018	11	4
OSD100-3T	R750-1806-01T-XXX-R27-L14	01S	93S	.018	11	4
OSD100-4X	R750-1806-01T-XXX-R27-L14	01S	93S	.018	11	4
OSD100-5T	R750-1806-01T-XXX-R27-L14	01S	93S	.018	11	4
OSD100-7	R750-1806-01T-XXX-R27-L14	01S	93S	.018	11	4
OSD100-E	R750-1806-01T-XXX-R27-L14	01S	93S	.018	11	4
OSD100-P	R750-1806-01T-XXX-R27-L14	01S	93S	.018	11	4
OSD1-1	R100-0402-02T-XXX-R27-L14	75S	265S	.018	1	2
OSD1-3T	R100-0402-02T-XXX-R27-L14	75S	265S	.018	1	2
OSD1-4X	R100-0402-02T-XXX-R27-L14	75S	265S	.018	1	2
OSD15-0	R200-0402-02T-XXX-R27-L14	01S	93S	.018	3	2
OSD15-1	R200-0402-02T-XXX-R27-L14	01S	93S	.018	3	2
OSD15-3T	R200-0403-02T-XXX-R27-L14	01S	93S	.018	4	3
OSD15-5T	R200-0402-02T-XXX-R27-L14	01S	93S	.018	3	2
OSD15-E	R200-0402-02T-XXX-R27-L14	01S	93S	.018	3	2
OSD1-5T	R100-0402-02T-XXX-R27-L14	75S	265S	.018	1	2
OSD1-E	R100-0402-02T-XXX-R27-L14	75S	265S	.018	1	2
OSD300-5T	R1100-SP06-01T-XXX-R27-L14	01S	93S	.018	12	5
OSD35-3T	R295-0403-02T-XXX-R27-L14	01S	93S	.018	8	3
OSD35-5T	R295-0403-02T-XXX-R27-L14	01S	93S	.018	8	3
OSD35-7	R295-0403-02T-XXX-R27-L14	01S	93S	.018	8	3
OSD3-5T	R100-0402-02T-XXX-R27-L14	75S	265S	.018	1	2
OSD5.8-7	R200-0402-02T-XXX-R27-L14	01S	93S	.018	3	2
OSD5-0	R200-0402-02T-XXX-R27-L14	01S	93S	.018	3	2
OSD50-0	R400-0803-02T-XXX-R27-L14	01S	93S	.018	9	4
OSD50-1	R200-0402-02T-XXX-R27-L14	01S	93S	.018	3	2
OSD50-3T	R295-0403-02T-XXX-R27-L14	01S	93S	.018	8	3
OSD50-4X	R295-0403-02T-XXX-R27-L14	01S	93S	.018	8	3
OSD5-5T	R400-0803-02T-XXX-R27-L14	01S	93S	.018	9	4
OSD50-E	R400-0803-02T-XXX-R27-L14	01S	93S	.018	9	4
OSD5-1	R200-0402-02T-XXX-R27-L14	01S	93S	.018	3	2
OSD5-3T	R200-0403-02T-XXX-R27-L14	01S	93S	.018	4	3
OSD5-4X	R200-0404-01T-XXX-R27-L14	01S	93S	.018	5	3

Centronic Sensors Sockets <i>Continued</i>						
Centronic Sensors Model Number	Andon Part Number Replace "XXX" with Terminal Type	Terminal Type		Pin Ø [in]	Figure Number	Page Number
		Thru-Hole	Surface Mount			
OSD5-5T	R200-0402-02T-XXX-R27-L14	01S	93S	.018	3	2
OSD5-E	R200-0402-02T-XXX-R27-L14	01S	93S	.018	3	2
OSD60-3T	R295-0403-02T-XXX-R27-L14	01S	93S	.018	8	3
OSD60-5T	R400-0803-01T-XXX-R27-L14	01S	93S	.018	9	4
OSD60-E	R400-0803-01T-XXX-R27-L14	01S	93S	.018	9	4
OSD7.5-5T	R200-0402-02T-XXX-R27-L14	01S	93S	.018	3	2
OSD7.5-E	R200-0402-02T-XXX-R27-L14	01S	93S	.018	3	2
Q7-0	R230-1010-01T-XXX-R27-L14	211S	265S	.018	7	3
QD100-0	R750-1806-01T-XXX-R27-L14	01S	93S	.018	11	4
QD100-1	R750-1806-01T-XXX-R27-L14	01S	93S	.018	11	4
QD100-4X	R750-1806-01T-XXX-R27-L14	01S	93S	.018	11	4
QD100-5T	R750-1806-01T-XXX-R27-L14	01S	93S	.018	11	4
QD320-4X	R1100-SP06-01T-XXX-R27-L14	01S	93S	.018	12	5
QD50-0	R395-SP06-01T-XXX-R27-L14	01S	93S	.018	10	4
QD50-1	R395-SP06-01T-XXX-R27-L14	01S	93S	.018	10	4
QD50-4X	R395-SP06-01T-XXX-R27-L14	01S	93S	.018	10	4
QD50-5T	R395-SP06-01T-XXX-R27-L14	01S	93S	.018	10	4
QD7-1	R230-1010-01T-XXX-R27-L14	211S	265S	.018	7	3
QD7-5T	R230-1010-01T-XXX-R27-L14	211S	265S	.018	7	3
X65EB	R100-0402-02T-XXX-R27-L14	75S	265S	.018	1	2

Top View Shown
Units: in [mm]

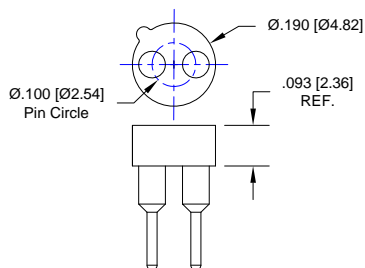


Fig. 1

Thru-Hole: R100-0402-02T-**75S**-R27-L14
Surface Mount: R100-0402-02T-**265S**-R27-L14

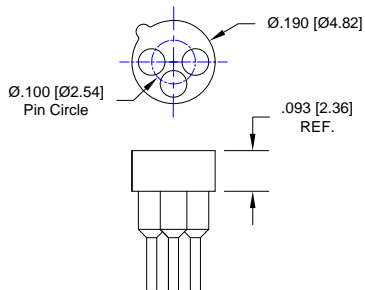
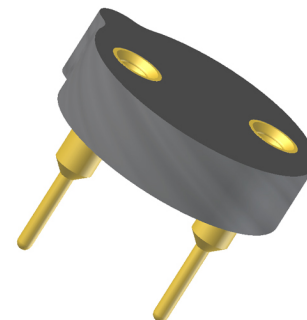


Fig. 2

Thru-Hole: R100-0403-02T-**75S**-R27-L14
Surface Mount: R100-0403-02T-**265S**-R27-L14

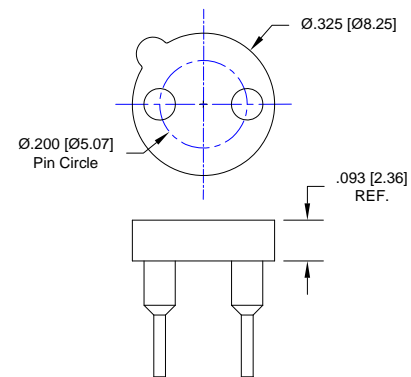


Fig. 3

Thru-Hole: R200-0402-02T-**01S**-R27-L14
Surface Mount: R200-0402-02T-**93S**-R27-L14

Centronic Sensors Continued
Top View Shown
Units: in [mm]

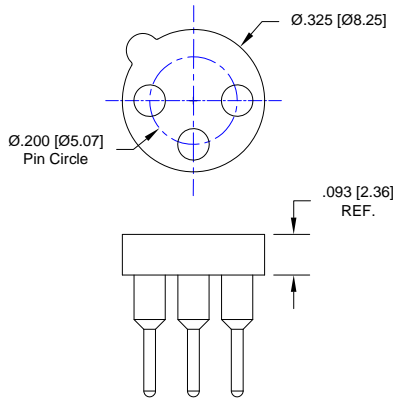


Fig. 4

Thru-Hole: R200-0403-02T-**01S**-R27-L14
Surface Mount: R200-0403-02T-**93S**-R27-L14

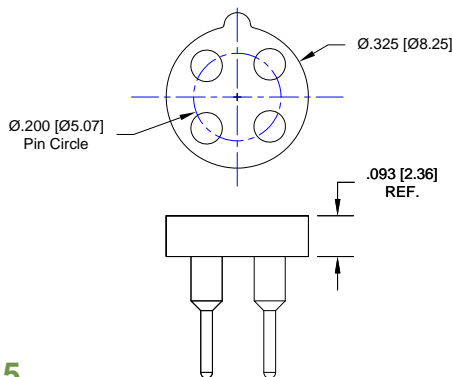


Fig. 5

Thru-Hole: R200-0404-01T-**01S**-R27-L14
Surface Mount: R200-0404-01T-**93S**-R27-L14

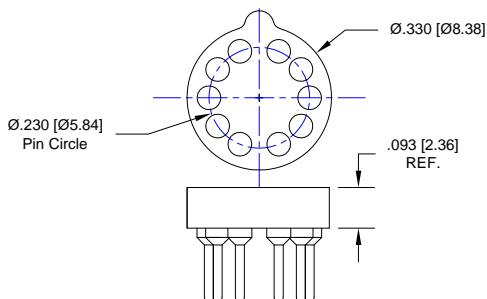


Fig. 7

Thru-Hole: R230-1010-01T-**211S**-R27-L14
Surface Mount: R230-1010-01T-**265S**-R27-L14

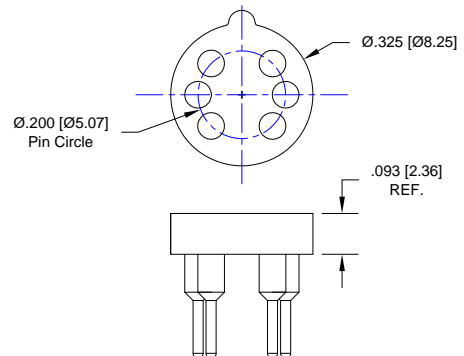
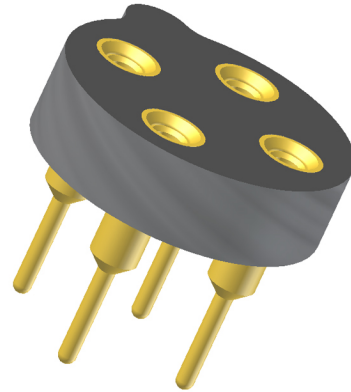


Fig. 6

Thru-Hole: R200-0806-04T-**75S**-R27-L14
Surface Mount: R200-0806-04T-**265S**-R27-L14

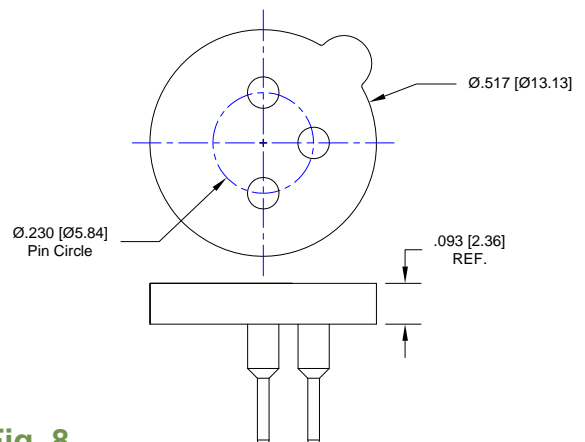


Fig. 8

Thru-Hole: R295-0403-02T-**01S**-R27-L14
Surface Mount: R295-0403-02T-**93S**-R27-L14

Centronic Sensors Continued

Top View Shown

Units: in [mm]

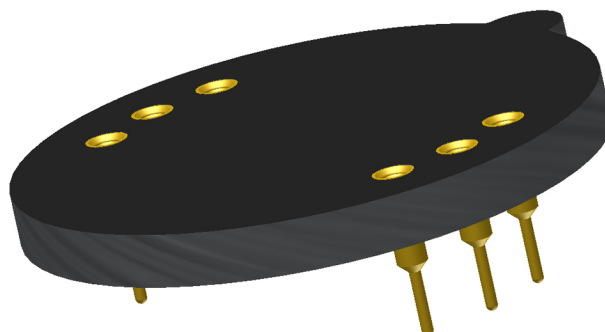
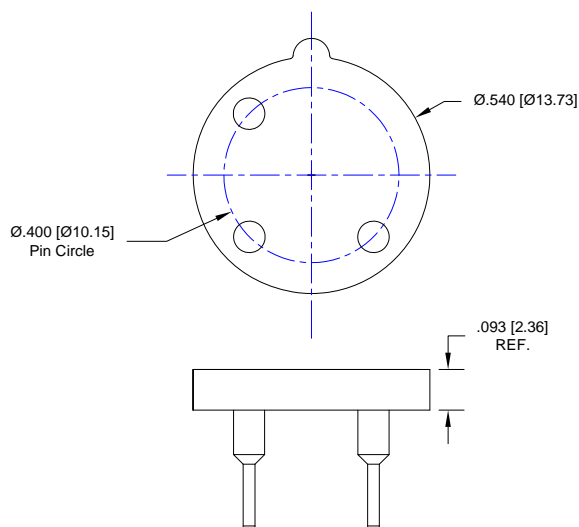


Fig. 9

Thru-Hole: R400-0803-01T-01S-R27-L14

Surface Mount: R400-0803-01T-93S-R27-L14

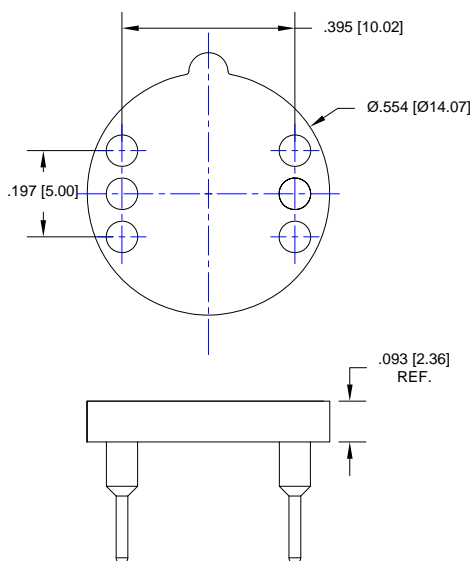


Fig. 10

Thru-Hole: R395-SP06-01T-01S-R27-L14

Surface Mount: R395-SP06-01T-93S-R27-L14

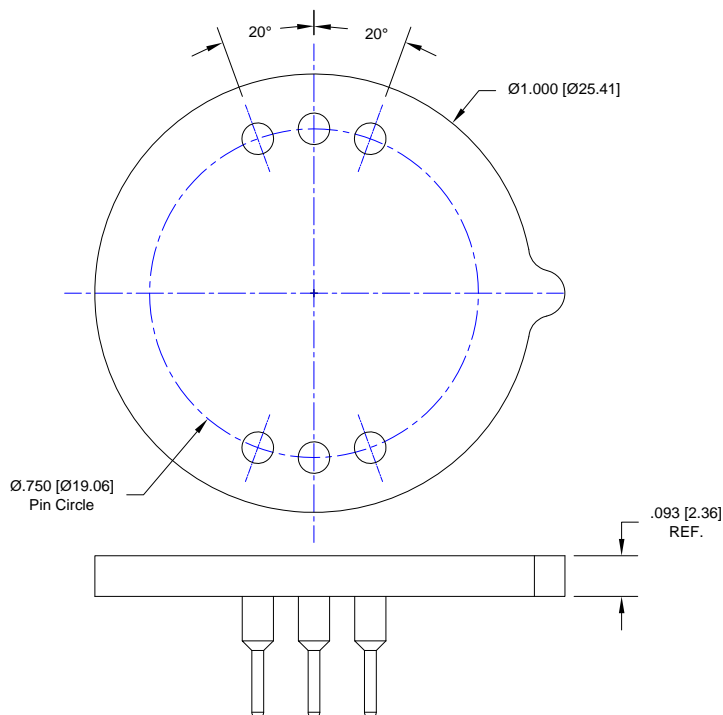


Fig. 11

Thru-Hole: R750-1806-01T-01S-R27-L14

Surface Mount: R750-1806-01T-93S-R27-L14

Centronic Sensors Continued
Top View Shown
Units: in [mm]

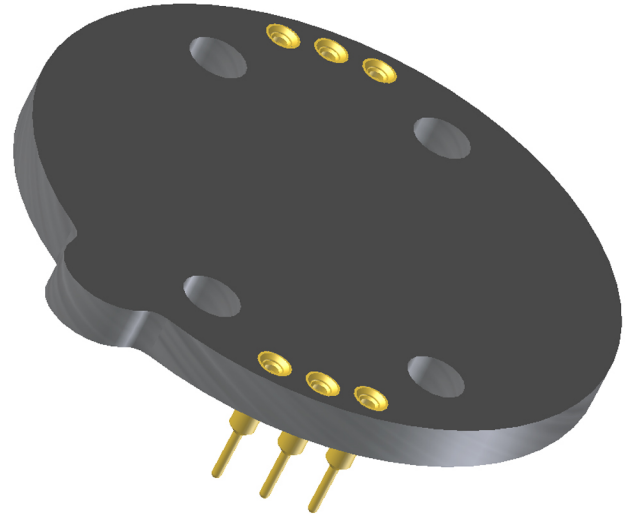
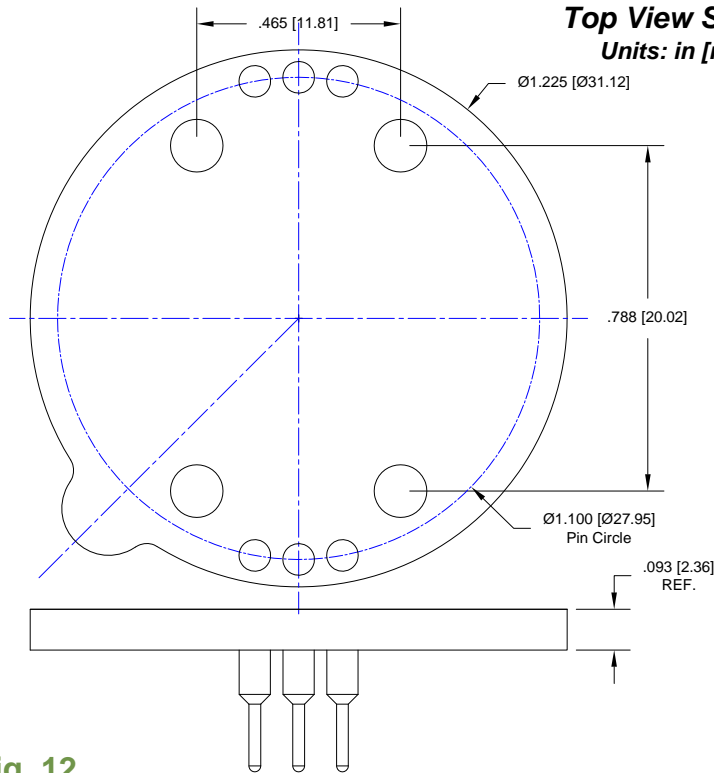


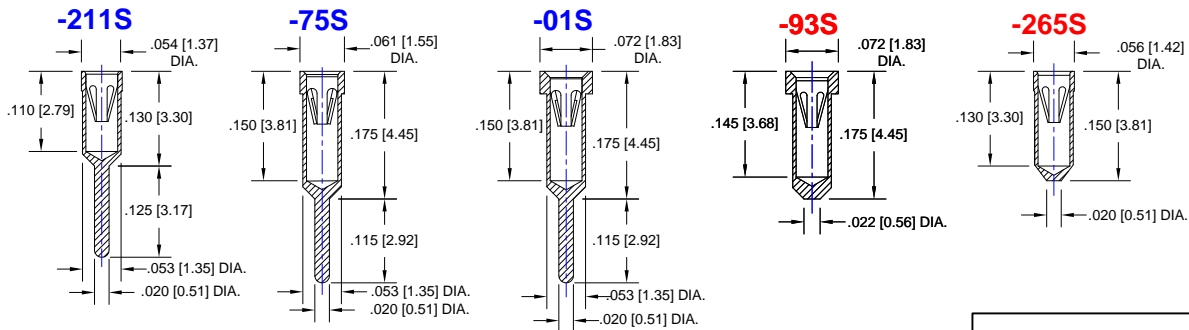
Fig. 12

Thru-Hole: R1100-SP06-01T-01S-R27-L14

Surface Mount: R1100-SP06-01T-93S-R27-L14

Socket Terminal Details

Cross Section View Shown Units: in [mm]



Material:

Insulator: Hi-Temp UL 94V-O
Terminal: Brass, per ASTM-B16
Contact: BeCu, Per ASTM-B194

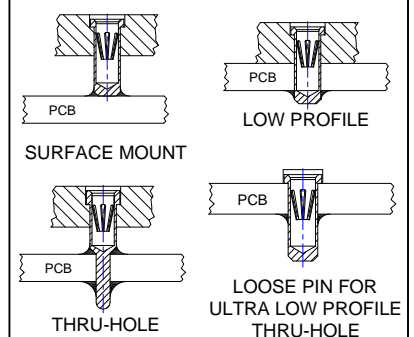
Plating: RoHS COMPLIANT

R27 TERMINAL: GOLD / CONTACT: GOLD
R17 TERMINAL: TIN / CONTACT: GOLD
OTHER PLATINGS AVAILABLE

Terminal Acceptance and Forces

Thru Hole Terminals				Surface Mount Terminals			
Thru Hole Terminal	Accepts Pin Diameter	Insertion Force	Withdrawal Force	Surface Mount Terminal	Accepts Pin Diameter	Insertion Force	Withdrawal Force
-211S	Ø.018 [Ø0.46]	9.0 oz Avg.	2.0 oz Min	-265S	Ø.018 [Ø0.46]	9.0 oz Avg.	2.0 oz Min
-75S	Ø.018 [Ø0.46]	9.0 oz Avg.	2.0 oz Min	-93S	Ø.018 [Ø0.46]	9.0 oz Avg.	2.0 oz Min
-01S	Ø.018 [Ø0.46]	9.0 oz Avg.	2.0 oz Min				

MOUNTING OPTIONS



"ANDON PROPRIETARY INFORMATION"

RoHS Compliant

©Copyright 2012 Andon Electronics Corporation. All Rights Reserved. This material is protected under US and other copyrights and may not be copied, sold, or redistributed in any form without written permission of Andon Electronics Corporation. Copyrights and trademarks are property of their respective companies. We reserve the right to change specifications without notice. Andon makes no warranty, expressed or implied, as to the suitability of the sockets for the intended purpose.

*Sockets are not drawn to scale Centronic Sensors 09/20/2012

ANDON ELECTRONICS CORPORATION
4 Court Drive, Lincoln RI 02865, United States of America

www.andonelectronics.com or www.andonelect.com
Phone 401-333-0388 Fax 401-333-0287
Email Info@andonelect.com