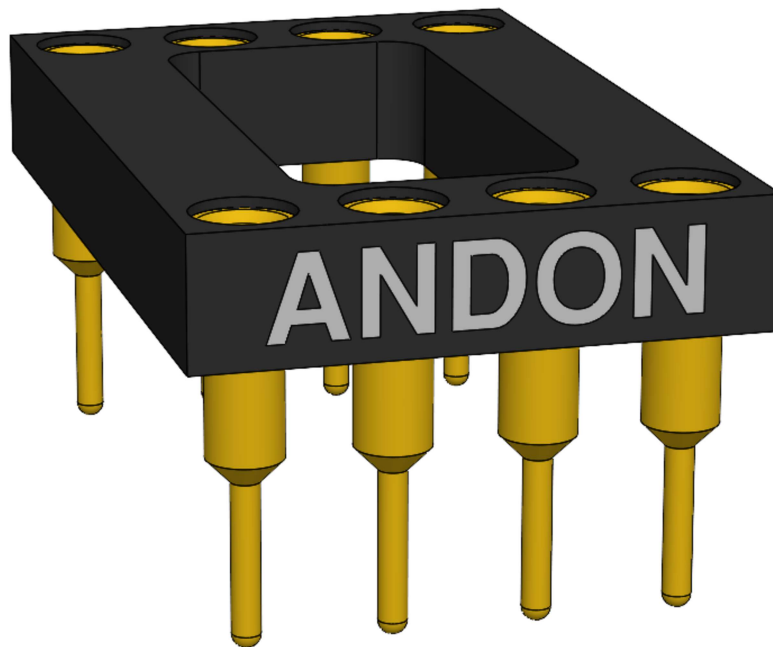




High-Reliability Optoelectric Sensor Sockets for Analog Microelectronics GmbH

analog microelectronics



Featuring Andon's Unique SenstacTM Contact

| Analog Microelectronics GmbH | | | | | | |
|------------------------------|---|---------------|---------------|---------------|----------------|------------------|
| Part Number | Andon Part Number Replace "XXX" With terminal Type | Terminal Type | | Pin Ø [in] | Page Number | Figure Number |
| | | Thru-Hole | Surface Mount | | | |
| AMS 5105-0005-D | CSP580-08-01-01S-R27-L14 | 01S | 93S | 0.020 | 6 | 1 |
| AMS 5105-0005-D-B | CSP580-08-01-01S-R27-L14 | 01S | 93S | 0.020 | 6 | 1 |
| AMS 5105-0010-D | CSP580-08-01-01S-R27-L14 | 01S | 93S | 0.020 | 6 | 1 |
| AMS 5105-0010-D-B | CSP580-08-01-01S-R27-L14 | 01S | 93S | 0.020 | 6 | 1 |
| AMS 5105-0020-D | CSP580-08-01-01S-R27-L14 | 01S | 93S | 0.020 | 6 | 1 |
| AMS 5105-0020-D-B | CSP580-08-01-01S-R27-L14 | 01S | 93S | 0.020 | 6 | 1 |
| AMS 5105-0050-D | CSP580-08-01-01S-R27-L14 | 01S | 93S | 0.020 | 6 | 1 |
| AMS 5105-0050-D-B | CSP580-08-01-01S-R27-L14 | 01S | 93S | 0.020 | 6 | 1 |
| AMS 5105-0100-D | CSP580-08-01-01S-R27-L14 | 01S | 93S | 0.020 | 6 | 1 |
| AMS 5105-0100-D-B | CSP580-08-01-01S-R27-L14 | 01S | 93S | 0.020 | 6 | 1 |
| AMS 5105-0200-D | CSP580-08-01-01S-R27-L14 | 01S | 93S | 0.020 | 6 | 1 |
| AMS 5105-0200-D-B | CSP580-08-01-01S-R27-L14 | 01S | 93S | 0.020 | 6 | 1 |
| AMS 5105-0350-D | CSP580-08-01-01S-R27-L14 | 01S | 93S | 0.020 | 6 | 1 |
| AMS 5105-0350-D-B | CSP580-08-01-01S-R27-L14 | 01S | 93S | 0.020 | 6 | 1 |
| AMS 5105-1000-A | CSP580-08-01-01S-R27-L14 | 01S | 93S | 0.020 | 6 | 1 |
| AMS 5105-1000-D | CSP580-08-01-01S-R27-L14 | 01S | 93S | 0.020 | 6 | 1 |
| AMS 5105-1000-D-B | CSP580-08-01-01S-R27-L14 | 01S | 93S | 0.020 | 6 | 1 |
| AMS 5105-1200-B | CSP580-08-01-01S-R27-L14 | 01S | 93S | 0.020 | 6 | 1 |
| AMS 5105-2000-A | CSP580-08-01-01S-R27-L14 | 01S | 93S | 0.020 | 6 | 1 |
| AMS 5105-2000-D | CSP580-08-01-01S-R27-L14 | 01S | 93S | 0.020 | 6 | 1 |
| AMS 5105-4000-D | CSP580-08-01-01S-R27-L14 | 01S | 93S | 0.020 | 6 | 1 |
| AMS 5105-7000-D | CSP580-08-01-01S-R27-L14 | 01S | 93S | 0.020 | 6 | 1 |
| AMS 5612-0003-D | CSP580-08-01-01S-R27-L14 | 01S | 93S | 0.020 | 6 | 1 |
| AMS 5612-0003-G | CSP580-08-01-01S-R27-L14 | 01S | 93S | 0.020 | 6 | 1 |
| AMS 5612-0008-D | CSP580-08-01-01S-R27-L14 | 01S | 93S | 0.020 | 6 | 1 |
| AMS 5612-0008-G | CSP580-08-01-01S-R27-L14 | 01S | 93S | 0.020 | 6 | 1 |
| AMS 5612-0015-D | CSP580-08-01-01S-R27-L14 | 01S | 93S | 0.020 | 6 | 1 |
| AMS 5612-0015-G | CSP580-08-01-01S-R27-L14 | 01S | 93S | 0.020 | 6 | 1 |
| AMS 5612-0030-D | CSP580-08-01-01S-R27-L14 | 01S | 93S | 0.020 | 6 | 1 |
| AMS 5612-0030-G | CSP580-08-01-01S-R27-L14 | 01S | 93S | 0.020 | 6 | 1 |
| AMS 5612-0050-D | CSP580-08-01-01S-R27-L14 | 01S | 93S | 0.020 | 6 | 1 |
| AMS 5612-0050-G | CSP580-08-01-01S-R27-L14 | 01S | 93S | 0.020 | 6 | 1 |
| AMS 5612-0150-A | CSP580-08-01-01S-R27-L14 | 01S | 93S | 0.020 | 6 | 1 |
| AMS 5612-0150-D | CSP580-08-01-01S-R27-L14 | 01S | 93S | 0.020 | 6 | 1 |
| AMS 5612-0150-G | CSP580-08-01-01S-R27-L14 | 01S | 93S | 0.020 | 6 | 1 |
| AMS 5812-0000-D | CSP580-08-01-01S-R27-L14 | 01S | 93S | 0.020 | 6 | 1 |
| AMS 5812-0000-D-B | CSP580-08-01-01S-R27-L14 | 01S | 93S | 0.020 | 6 | 1 |
| AMS 5812-0000-D-B-N | CSP580-08-01-01S-R27-L14 | 01S | 93S | 0.020 | 6 | 1 |
| AMS 5812-0000-D-N | CSP580-08-01-01S-R27-L14 | 01S | 93S | 0.020 | 6 | 1 |
| AMS 5812-0001-D | CSP580-08-01-01S-R27-L14 | 01S | 93S | 0.020 | 6 | 1 |
| AMS 5812-0001-D-B | CSP580-08-01-01S-R27-L14 | 01S | 93S | 0.020 | 6 | 1 |
| AMS 5812-0001-D-B-N | CSP580-08-01-01S-R27-L14 | 01S | 93S | 0.020 | 6 | 1 |
| AMS 5812-0001-D-N | CSP580-08-01-01S-R27-L14 | 01S | 93S | 0.020 | 6 | 1 |
| AMS 5812-0003-D | CSP580-08-01-01S-R27-L14 | 01S | 93S | 0.020 | 6 | 1 |
| AMS 5812-0003-D-B | CSP580-08-01-01S-R27-L14 | 01S | 93S | 0.020 | 6 | 1 |
| AMS 5812-0003-D-B-N | CSP580-08-01-01S-R27-L14 | 01S | 93S | 0.020 | 6 | 1 |
| AMS 5812-0003-D-N | CSP580-08-01-01S-R27-L14 | 01S | 93S | 0.020 | 6 | 1 |

See last page for other mounting types including low profile options.
Heat sink socket available to reduce heat and noise. Contact Andon for details.

| Analog Microelectronics GmbH | | | | | | |
|------------------------------|---|---------------|---------------|---------------|----------------|------------------|
| Part Number | Andon Part Number Replace "XXX" With terminal Type | Terminal Type | | Pin Ø [in] | Page Number | Figure Number |
| | | Thru-Hole | Surface Mount | | | |
| AMS 5812-0004-D | CSP580-08-01-01S-R27-L14 | 01S | 93S | 0.020 | 6 | 1 |
| AMS 5812-0004-D-N | CSP580-08-01-01S-R27-L14 | 01S | 93S | 0.020 | 6 | 1 |
| AMS 5812-0008-D | CSP580-08-01-01S-R27-L14 | 01S | 93S | 0.020 | 6 | 1 |
| AMS 5812-0008-D-B | CSP580-08-01-01S-R27-L14 | 01S | 93S | 0.020 | 6 | 1 |
| AMS 5812-0008-D-B-N | CSP580-08-01-01S-R27-L14 | 01S | 93S | 0.020 | 6 | 1 |
| AMS 5812-0008-D-N | CSP580-08-01-01S-R27-L14 | 01S | 93S | 0.020 | 6 | 1 |
| AMS 5812-0015-D | CSP580-08-01-01S-R27-L14 | 01S | 93S | 0.020 | 6 | 1 |
| AMS 5812-0015-D-B | CSP580-08-01-01S-R27-L14 | 01S | 93S | 0.020 | 6 | 1 |
| AMS 5812-0015-D-B-N | CSP580-08-01-01S-R27-L14 | 01S | 93S | 0.020 | 6 | 1 |
| AMS 5812-0015-D-N | CSP580-08-01-01S-R27-L14 | 01S | 93S | 0.020 | 6 | 1 |
| AMS 5812-0030-D | CSP580-08-01-01S-R27-L14 | 01S | 93S | 0.020 | 6 | 1 |
| AMS 5812-0030-D-B | CSP580-08-01-01S-R27-L14 | 01S | 93S | 0.020 | 6 | 1 |
| AMS 5812-0030-D-B-N | CSP580-08-01-01S-R27-L14 | 01S | 93S | 0.020 | 6 | 1 |
| AMS 5812-0030-D-N | CSP580-08-01-01S-R27-L14 | 01S | 93S | 0.020 | 6 | 1 |
| AMS 5812-0050-A | CSP580-08-01-01S-R27-L14 | 01S | 93S | 0.020 | 6 | 1 |
| AMS 5812-0050-D | CSP580-08-01-01S-R27-L14 | 01S | 93S | 0.020 | 6 | 1 |
| AMS 5812-0050-D-B | CSP580-08-01-01S-R27-L14 | 01S | 93S | 0.020 | 6 | 1 |
| AMS 5812-0050-D-B-N | CSP580-08-01-01S-R27-L14 | 01S | 93S | 0.020 | 6 | 1 |
| AMS 5812-0050-D-N | CSP580-08-01-01S-R27-L14 | 01S | 93S | 0.020 | 6 | 1 |
| AMS 5812-0150-A | CSP580-08-01-01S-R27-L14 | 01S | 93S | 0.020 | 6 | 1 |
| AMS 5812-0150-B | CSP580-08-01-01S-R27-L14 | 01S | 93S | 0.020 | 6 | 1 |
| AMS 5812-0150-D | CSP580-08-01-01S-R27-L14 | 01S | 93S | 0.020 | 6 | 1 |
| AMS 5812-0150-D-B | CSP580-08-01-01S-R27-L14 | 01S | 93S | 0.020 | 6 | 1 |
| AMS 5812-0150-D-B-N | CSP580-08-01-01S-R27-L14 | 01S | 93S | 0.020 | 6 | 1 |
| AMS 5812-0150-D-N | CSP580-08-01-01S-R27-L14 | 01S | 93S | 0.020 | 6 | 1 |
| AMS 5812-015W-D-B 3) | CSP580-08-01-01S-R27-L14 | 01S | 93S | 0.020 | 6 | 1 |
| AMS 5812-015W-D-B-N 3) | CSP580-08-01-01S-R27-L14 | 01S | 93S | 0.020 | 6 | 1 |
| AMS 5812-0300-A | CSP580-08-01-01S-R27-L14 | 01S | 93S | 0.020 | 6 | 1 |
| AMS 5812-0300-D | CSP580-08-01-01S-R27-L14 | 01S | 93S | 0.020 | 6 | 1 |
| AMS 5812-0300-D-N | CSP580-08-01-01S-R27-L14 | 01S | 93S | 0.020 | 6 | 1 |
| AMS 5812-0600-D | CSP580-08-01-01S-R27-L14 | 01S | 93S | 0.020 | 6 | 1 |
| AMS 5812-0600-D-N | CSP580-08-01-01S-R27-L14 | 01S | 93S | 0.020 | 6 | 1 |
| AMS 5812-1000-D | CSP580-08-01-01S-R27-L14 | 01S | 93S | 0.020 | 6 | 1 |
| AMS 5812-1000-D-N | CSP580-08-01-01S-R27-L14 | 01S | 93S | 0.020 | 6 | 1 |
| AMS 5915-0002-D-B | CSP580-08-01-01S-R27-L14 | 01S | 93S | 0.020 | 6 | 1 |
| AMS 5915-0002-D-B-N | CSP580-08-01-01S-R27-L14 | 01S | 93S | 0.020 | 6 | 1 |
| AMS 5915-0005-D | CSP580-08-01-01S-R27-L14 | 01S | 93S | 0.020 | 6 | 1 |
| AMS 5915-0005-D-B | CSP580-08-01-01S-R27-L14 | 01S | 93S | 0.020 | 6 | 1 |
| AMS 5915-0005-D-B-N | CSP580-08-01-01S-R27-L14 | 01S | 93S | 0.020 | 6 | 1 |
| AMS 5915-0005-D-N | CSP580-08-01-01S-R27-L14 | 01S | 93S | 0.020 | 6 | 1 |
| AMS 5915-0010-D | CSP580-08-01-01S-R27-L14 | 01S | 93S | 0.020 | 6 | 1 |
| AMS 5915-0010-D-B | CSP580-08-01-01S-R27-L14 | 01S | 93S | 0.020 | 6 | 1 |
| AMS 5915-0010-D-B-N | CSP580-08-01-01S-R27-L14 | 01S | 93S | 0.020 | 6 | 1 |
| AMS 5915-0010-D-N | CSP580-08-01-01S-R27-L14 | 01S | 93S | 0.020 | 6 | 1 |
| AMS 5915-0020-D | CSP580-08-01-01S-R27-L14 | 01S | 93S | 0.020 | 6 | 1 |
| AMS 5915-0020-D-B | CSP580-08-01-01S-R27-L14 | 01S | 93S | 0.020 | 6 | 1 |
| AMS 5915-0020-D-B-N | CSP580-08-01-01S-R27-L14 | 01S | 93S | 0.020 | 6 | 1 |

See last page for other mounting types including low profile options.
Heat sink socket available to reduce heat and noise. Contact Andon for details.

| Analog Microelectronics GmbH | | | | | | |
|------------------------------|---|---------------|---------------|---------------|----------------|------------------|
| Part Number | Andon Part Number Replace "XXX" With terminal Type | Terminal Type | | Pin Ø [in] | Page Number | Figure Number |
| | | Thru-Hole | Surface Mount | | | |
| AMS 5915-0020-D-N | CSP580-08-01-01S-R27-L14 | 01S | 93S | 0.020 | 6 | 1 |
| AMS 5915-0035-D | CSP580-08-01-01S-R27-L14 | 01S | 93S | 0.020 | 6 | 1 |
| AMS 5915-0035-D-B | CSP580-08-01-01S-R27-L14 | 01S | 93S | 0.020 | 6 | 1 |
| AMS 5915-0050-D | CSP580-08-01-01S-R27-L14 | 01S | 93S | 0.020 | 6 | 1 |
| AMS 5915-0050-D-B | CSP580-08-01-01S-R27-L14 | 01S | 93S | 0.020 | 6 | 1 |
| AMS 5915-0050-D-B-N | CSP580-08-01-01S-R27-L14 | 01S | 93S | 0.020 | 6 | 1 |
| AMS 5915-0050-D-N | CSP580-08-01-01S-R27-L14 | 01S | 93S | 0.020 | 6 | 1 |
| AMS 5915-0100-D | CSP580-08-01-01S-R27-L14 | 01S | 93S | 0.020 | 6 | 1 |
| AMS 5915-0100-D-B | CSP580-08-01-01S-R27-L14 | 01S | 93S | 0.020 | 6 | 1 |
| AMS 5915-0100-D-B-N | CSP580-08-01-01S-R27-L14 | 01S | 93S | 0.020 | 6 | 1 |
| AMS 5915-0100-D-N | CSP580-08-01-01S-R27-L14 | 01S | 93S | 0.020 | 6 | 1 |
| AMS 5915-0200-D | CSP580-08-01-01S-R27-L14 | 01S | 93S | 0.020 | 6 | 1 |
| AMS 5915-0200-D-B | CSP580-08-01-01S-R27-L14 | 01S | 93S | 0.020 | 6 | 1 |
| AMS 5915-0200-D-B-N | CSP580-08-01-01S-R27-L14 | 01S | 93S | 0.020 | 6 | 1 |
| AMS 5915-0200-D-N | CSP580-08-01-01S-R27-L14 | 01S | 93S | 0.020 | 6 | 1 |
| AMS 5915-0350-D | CSP580-08-01-01S-R27-L14 | 01S | 93S | 0.020 | 6 | 1 |
| AMS 5915-0350-D-B | CSP580-08-01-01S-R27-L14 | 01S | 93S | 0.020 | 6 | 1 |
| AMS 5915-0350-D-B-N | CSP580-08-01-01S-R27-L14 | 01S | 93S | 0.020 | 6 | 1 |
| AMS 5915-0350-D-N | CSP580-08-01-01S-R27-L14 | 01S | 93S | 0.020 | 6 | 1 |
| AMS 5915-0500-A | CSP580-08-01-01S-R27-L14 | 01S | 93S | 0.020 | 6 | 1 |
| AMS 5915-0500-D | CSP580-08-01-01S-R27-L14 | 01S | 93S | 0.020 | 6 | 1 |
| AMS 5915-0500-D-B | CSP580-08-01-01S-R27-L14 | 01S | 93S | 0.020 | 6 | 1 |
| AMS 5915-10000-D | CSP580-08-01-01S-R27-L14 | 01S | 93S | 0.020 | 6 | 1 |
| AMS 5915-10000-D-I-N | CSP580-08-01-01S-R27-L14 | 01S | 93S | 0.020 | 6 | 1 |
| AMS 5915-10000-D-N | CSP580-08-01-01S-R27-L14 | 01S | 93S | 0.020 | 6 | 1 |
| AMS 5915-1000-A | CSP580-08-01-01S-R27-L14 | 01S | 93S | 0.020 | 6 | 1 |
| AMS 5915-1000-D | CSP580-08-01-01S-R27-L14 | 01S | 93S | 0.020 | 6 | 1 |
| AMS 5915-1000-D-B | CSP580-08-01-01S-R27-L14 | 01S | 93S | 0.020 | 6 | 1 |
| AMS 5915-1000-D-B-N | CSP580-08-01-01S-R27-L14 | 01S | 93S | 0.020 | 6 | 1 |
| AMS 5915-1000-D-N | CSP580-08-01-01S-R27-L14 | 01S | 93S | 0.020 | 6 | 1 |
| AMS 5915-12000-D-I-N | CSP580-08-01-01S-R27-L14 | 01S | 93S | 0.020 | 6 | 1 |
| AMS 5915-1200-B | CSP580-08-01-01S-R27-L14 | 01S | 93S | 0.020 | 6 | 1 |
| AMS 5915-1500-A | CSP580-08-01-01S-R27-L14 | 01S | 93S | 0.020 | 6 | 1 |
| AMS 5915-16000-D-I-N | CSP580-08-01-01S-R27-L14 | 01S | 93S | 0.020 | 6 | 1 |
| AMS 5915-2000-A | CSP580-08-01-01S-R27-L14 | 01S | 93S | 0.020 | 6 | 1 |
| AMS 5915-2000-D | CSP580-08-01-01S-R27-L14 | 01S | 93S | 0.020 | 6 | 1 |
| AMS 5915-2000-D-N | CSP580-08-01-01S-R27-L14 | 01S | 93S | 0.020 | 6 | 1 |
| AMS 5915-4000-D | CSP580-08-01-01S-R27-L14 | 01S | 93S | 0.020 | 6 | 1 |
| AMS 5915-4000-D-I-N | CSP580-08-01-01S-R27-L14 | 01S | 93S | 0.020 | 6 | 1 |
| AMS 5915-4000-D-N | CSP580-08-01-01S-R27-L14 | 01S | 93S | 0.020 | 6 | 1 |
| AMS 5915-7000-D | CSP580-08-01-01S-R27-L14 | 01S | 93S | 0.020 | 6 | 1 |
| AMS 5915-7000-D-I-N | CSP580-08-01-01S-R27-L14 | 01S | 93S | 0.020 | 6 | 1 |
| AMS 5915-7000-D-N | CSP580-08-01-01S-R27-L14 | 01S | 93S | 0.020 | 6 | 1 |
| AMS 5935-0001-D-B-... | CSP580-08-01-01S-R27-L14 | 01S | 93S | 0.020 | 6 | 1 |
| AMS 5935-0001-D-B-N-... | CSP580-08-01-01S-R27-L14 | 01S | 93S | 0.020 | 6 | 1 |
| AMS 5935-0002-D-... | CSP580-08-01-01S-R27-L14 | 01S | 93S | 0.020 | 6 | 1 |
| AMS 5935-0002-D-B-... | CSP580-08-01-01S-R27-L14 | 01S | 93S | 0.020 | 6 | 1 |

See last page for other mounting types including low profile options.
Heat sink socket available to reduce heat and noise. Contact Andon for details.

| Analog Microelectronics GmbH | | | | | | |
|------------------------------|---|---------------|---------------|---------------|----------------|------------------|
| Part Number | Andon Part Number Replace "XXX" With terminal Type | Terminal Type | | Pin Ø [in] | Page Number | Figure Number |
| | | Thru-Hole | Surface Mount | | | |
| AMS 5935-0002-D-B-N-... | CSP580-08-01-01S-R27-L14 | 01S | 93S | 0.020 | 6 | 1 |
| AMS 5935-0002-D-N-... | CSP580-08-01-01S-R27-L14 | 01S | 93S | 0.020 | 6 | 1 |
| AMS 5935-0005-D-... | CSP580-08-01-01S-R27-L14 | 01S | 93S | 0.020 | 6 | 1 |
| AMS 5935-0005-D-B-... | CSP580-08-01-01S-R27-L14 | 01S | 93S | 0.020 | 6 | 1 |
| AMS 5935-0005-D-B-N-... | CSP580-08-01-01S-R27-L14 | 01S | 93S | 0.020 | 6 | 1 |
| AMS 5935-0005-D-N-... | CSP580-08-01-01S-R27-L14 | 01S | 93S | 0.020 | 6 | 1 |
| AMS 5935-0010-D-... | CSP580-08-01-01S-R27-L14 | 01S | 93S | 0.020 | 6 | 1 |
| AMS 5935-0010-D-B-... | CSP580-08-01-01S-R27-L14 | 01S | 93S | 0.020 | 6 | 1 |
| AMS 5935-0010-D-B-N-... | CSP580-08-01-01S-R27-L14 | 01S | 93S | 0.020 | 6 | 1 |
| AMS 5935-0010-D-N-... | CSP580-08-01-01S-R27-L14 | 01S | 93S | 0.020 | 6 | 1 |
| AMS 5935-0020-D-... | CSP580-08-01-01S-R27-L14 | 01S | 93S | 0.020 | 6 | 1 |
| AMS 5935-0020-D-B-... | CSP580-08-01-01S-R27-L14 | 01S | 93S | 0.020 | 6 | 1 |
| AMS 5935-0020-D-B-N-... | CSP580-08-01-01S-R27-L14 | 01S | 93S | 0.020 | 6 | 1 |
| AMS 5935-0020-D-N-... | CSP580-08-01-01S-R27-L14 | 01S | 93S | 0.020 | 6 | 1 |
| AMS 5935-0035-D-... | CSP580-08-01-01S-R27-L14 | 01S | 93S | 0.020 | 6 | 1 |
| AMS 5935-0035-D-B-... | CSP580-08-01-01S-R27-L14 | 01S | 93S | 0.020 | 6 | 1 |
| AMS 5935-0035-D-B-N-... | CSP580-08-01-01S-R27-L14 | 01S | 93S | 0.020 | 6 | 1 |
| AMS 5935-0035-D-N-... | CSP580-08-01-01S-R27-L14 | 01S | 93S | 0.020 | 6 | 1 |
| AMS 5935-0050-D-... | CSP580-08-01-01S-R27-L14 | 01S | 93S | 0.020 | 6 | 1 |
| AMS 5935-0050-D-B-... | CSP580-08-01-01S-R27-L14 | 01S | 93S | 0.020 | 6 | 1 |
| AMS 5935-0050-D-B-N-... | CSP580-08-01-01S-R27-L14 | 01S | 93S | 0.020 | 6 | 1 |
| AMS 5935-0050-D-N-... | CSP580-08-01-01S-R27-L14 | 01S | 93S | 0.020 | 6 | 1 |
| AMS 5935-0100-D-... | CSP580-08-01-01S-R27-L14 | 01S | 93S | 0.020 | 6 | 1 |
| AMS 5935-0100-D-B-... | CSP580-08-01-01S-R27-L14 | 01S | 93S | 0.020 | 6 | 1 |
| AMS 5935-0100-D-B-N-... | CSP580-08-01-01S-R27-L14 | 01S | 93S | 0.020 | 6 | 1 |
| AMS 5935-0100-D-N-... | CSP580-08-01-01S-R27-L14 | 01S | 93S | 0.020 | 6 | 1 |
| AMS 5935-0200-D-... | CSP580-08-01-01S-R27-L14 | 01S | 93S | 0.020 | 6 | 1 |
| AMS 5935-0200-D-B-... | CSP580-08-01-01S-R27-L14 | 01S | 93S | 0.020 | 6 | 1 |
| AMS 5935-0200-D-B-N-... | CSP580-08-01-01S-R27-L14 | 01S | 93S | 0.020 | 6 | 1 |
| AMS 5935-0200-D-N-... | CSP580-08-01-01S-R27-L14 | 01S | 93S | 0.020 | 6 | 1 |
| AMS 5935-0350-D-... | CSP580-08-01-01S-R27-L14 | 01S | 93S | 0.020 | 6 | 1 |
| AMS 5935-0350-D-B-... | CSP580-08-01-01S-R27-L14 | 01S | 93S | 0.020 | 6 | 1 |
| AMS 5935-0350-D-B-N-... | CSP580-08-01-01S-R27-L14 | 01S | 93S | 0.020 | 6 | 1 |
| AMS 5935-0350-D-N-... | CSP580-08-01-01S-R27-L14 | 01S | 93S | 0.020 | 6 | 1 |
| AMS 5935-0500-A-... | CSP580-08-01-01S-R27-L14 | 01S | 93S | 0.020 | 6 | 1 |
| AMS 5935-0500-A-N-... | CSP580-08-01-01S-R27-L14 | 01S | 93S | 0.020 | 6 | 1 |
| AMS 5935-0500-D-... | CSP580-08-01-01S-R27-L14 | 01S | 93S | 0.020 | 6 | 1 |
| AMS 5935-0500-D-B-... | CSP580-08-01-01S-R27-L14 | 01S | 93S | 0.020 | 6 | 1 |
| AMS 5935-0500-D-B-N-... | CSP580-08-01-01S-R27-L14 | 01S | 93S | 0.020 | 6 | 1 |
| AMS 5935-0500-D-N-... | CSP580-08-01-01S-R27-L14 | 01S | 93S | 0.020 | 6 | 1 |
| AMS 5935-1000-A-... | CSP580-08-01-01S-R27-L14 | 01S | 93S | 0.020 | 6 | 1 |
| AMS 5935-1000-A-N-... | CSP580-08-01-01S-R27-L14 | 01S | 93S | 0.020 | 6 | 1 |
| AMS 5935-1000-D-... | CSP580-08-01-01S-R27-L14 | 01S | 93S | 0.020 | 6 | 1 |
| AMS 5935-1000-D-B-... | CSP580-08-01-01S-R27-L14 | 01S | 93S | 0.020 | 6 | 1 |
| AMS 5935-1000-D-B-N-... | CSP580-08-01-01S-R27-L14 | 01S | 93S | 0.020 | 6 | 1 |
| AMS 5935-1000-D-N-... | CSP580-08-01-01S-R27-L14 | 01S | 93S | 0.020 | 6 | 1 |
| AMS 5935-1200-B-... | CSP580-08-01-01S-R27-L14 | 01S | 93S | 0.020 | 6 | 1 |

See last page for other mounting types including low profile options.
Heat sink socket available to reduce heat and noise. Contact Andon for details.

| Analog Microelectronics GmbH | | | | | | |
|------------------------------|---|---------------|---------------|---------------|----------------|------------------|
| Part Number | Andon Part Number Replace "XXX" With terminal Type | Terminal Type | | Pin Ø [in] | Page Number | Figure Number |
| | | Thru-Hole | Surface Mount | | | |
| AMS 5935-1200-B-N-... | CSP580-08-01-01S-R27-L14 | 01S | 93S | 0.020 | 6 | 1 |
| AMS 5935-1500-A-... | CSP580-08-01-01S-R27-L14 | 01S | 93S | 0.020 | 6 | 1 |
| AMS 5935-1500-A-N-... | CSP580-08-01-01S-R27-L14 | 01S | 93S | 0.020 | 6 | 1 |
| AMS 5935-2000-A-... | CSP580-08-01-01S-R27-L14 | 01S | 93S | 0.020 | 6 | 1 |
| AMS 5935-2000-A-N-... | CSP580-08-01-01S-R27-L14 | 01S | 93S | 0.020 | 6 | 1 |
| AMS 6915-0002-D-B-H | CSP528-08-01-01S-R27-L14 | 01S | 93S | 0.020 | 6 | 2 |
| AMS 6915-0005-D-B-H | CSP528-08-01-01S-R27-L14 | 01S | 93S | 0.020 | 6 | 2 |
| AMS 6915-0005-D-H | CSP528-08-01-01S-R27-L14 | 01S | 93S | 0.020 | 6 | 2 |
| AMS 6915-0010-D-B-H | CSP528-08-01-01S-R27-L14 | 01S | 93S | 0.020 | 6 | 2 |
| AMS 6915-0010-D-H | CSP528-08-01-01S-R27-L14 | 01S | 93S | 0.020 | 6 | 2 |
| AMS 6915-0025-D-B-H | CSP528-08-01-01S-R27-L14 | 01S | 93S | 0.020 | 6 | 2 |
| AMS 6915-0025-D-H | CSP528-08-01-01S-R27-L14 | 01S | 93S | 0.020 | 6 | 2 |
| AMS 6915-0050-D-B-H | CSP528-08-01-01S-R27-L14 | 01S | 93S | 0.020 | 6 | 2 |
| AMS 6915-0050-D-H | CSP528-08-01-01S-R27-L14 | 01S | 93S | 0.020 | 6 | 2 |
| AMS 6915-0100-D-B-H | CSP528-08-01-01S-R27-L14 | 01S | 93S | 0.020 | 6 | 2 |
| AMS 6915-0100-D-H | CSP528-08-01-01S-R27-L14 | 01S | 93S | 0.020 | 6 | 2 |
| AMS 6915-0200-D-B-H | CSP528-08-01-01S-R27-L14 | 01S | 93S | 0.020 | 6 | 2 |
| AMS 6915-0200-D-H | CSP528-08-01-01S-R27-L14 | 01S | 93S | 0.020 | 6 | 2 |
| AMS 6915-0200-G-V | CSP528-08-01-01S-R27-L14 | 01S | 93S | 0.020 | 6 | 2 |
| AMS 6915-0350-D-B-H | CSP528-08-01-01S-R27-L14 | 01S | 93S | 0.020 | 6 | 2 |
| AMS 6915-0350-D-H | CSP528-08-01-01S-R27-L14 | 01S | 93S | 0.020 | 6 | 2 |
| AMS 6915-0350-G-V | CSP528-08-01-01S-R27-L14 | 01S | 93S | 0.020 | 6 | 2 |
| AMS 6915-0500-A-H | CSP528-08-01-01S-R27-L14 | 01S | 93S | 0.020 | 6 | 2 |
| AMS 6915-10000-G-V-MT | CSP528-08-01-01S-R27-L14 | 01S | 93S | 0.020 | 6 | 2 |
| AMS 6915-1000-A-H | CSP528-08-01-01S-R27-L14 | 01S | 93S | 0.020 | 6 | 2 |
| AMS 6915-1000-D-B-H | CSP528-08-01-01S-R27-L14 | 01S | 93S | 0.020 | 6 | 2 |
| AMS 6915-1000-D-H | CSP528-08-01-01S-R27-L14 | 01S | 93S | 0.020 | 6 | 2 |
| AMS 6915-1000-G-V | CSP528-08-01-01S-R27-L14 | 01S | 93S | 0.020 | 6 | 2 |
| AMS 6915-1200-B-H | CSP528-08-01-01S-R27-L14 | 01S | 93S | 0.020 | 6 | 2 |
| AMS 6915-16000-G-V-MT | CSP528-08-01-01S-R27-L14 | 01S | 93S | 0.020 | 6 | 2 |
| AMS 6915-2000-A-H | CSP528-08-01-01S-R27-L14 | 01S | 93S | 0.020 | 6 | 2 |
| AMS 6915-2000-D-H | CSP528-08-01-01S-R27-L14 | 01S | 93S | 0.020 | 6 | 2 |
| AMS 6915-2000-G-V | CSP528-08-01-01S-R27-L14 | 01S | 93S | 0.020 | 6 | 2 |
| AMS 6915-2500-D-H | CSP528-08-01-01S-R27-L14 | 01S | 93S | 0.020 | 6 | 2 |
| AMS 6915-3000-G-V-MT | CSP528-08-01-01S-R27-L14 | 01S | 93S | 0.020 | 6 | 2 |
| AMS 6915-4000-G-V-MT | CSP528-08-01-01S-R27-L14 | 01S | 93S | 0.020 | 6 | 2 |
| AMS 6915-7000-G-V-MT | CSP528-08-01-01S-R27-L14 | 01S | 93S | 0.020 | 6 | 2 |
| AMS 6916-0005-D-B-H | CSP528-08-01-01S-R27-L14 | 01S | 93S | 0.020 | 6 | 2 |
| AMS 6916-0005-D-H | CSP528-08-01-01S-R27-L14 | 01S | 93S | 0.020 | 6 | 2 |
| AMS 6916-0010-D-B-H | CSP528-08-01-01S-R27-L14 | 01S | 93S | 0.020 | 6 | 2 |
| AMS 6916-0010-D-H | CSP528-08-01-01S-R27-L14 | 01S | 93S | 0.020 | 6 | 2 |
| AMS 6916-0020-D-B-H | CSP528-08-01-01S-R27-L14 | 01S | 93S | 0.020 | 6 | 2 |
| AMS 6916-0020-D-H | CSP528-08-01-01S-R27-L14 | 01S | 93S | 0.020 | 6 | 2 |
| AMS 6916-0050-D-B-H | CSP528-08-01-01S-R27-L14 | 01S | 93S | 0.020 | 6 | 2 |
| AMS 6916-0050-D-H | CSP528-08-01-01S-R27-L14 | 01S | 93S | 0.020 | 6 | 2 |
| AMS 6916-0100-D-H | CSP528-08-01-01S-R27-L14 | 01S | 93S | 0.020 | 6 | 2 |
| AMS 6916-0200-D-B-H | CSP528-08-01-01S-R27-L14 | 01S | 93S | 0.020 | 6 | 2 |

See last page for other mounting types including low profile options.
Heat sink socket available to reduce heat and noise. Contact Andon for details.

| Analog Microelectronics GmbH | | | | | | |
|------------------------------|---|---------------|---------------|---------------|----------------|------------------|
| Part Number | Andon Part Number Replace "XXX" With terminal Type | Terminal Type | | Pin Ø [in] | Page Number | Figure Number |
| | | Thru-Hole | Surface Mount | | | |
| AMS 6916-0200-D-H | CSP528-08-01-01S-R27-L14 | 01S | 93S | 0.020 | 6 | 2 |
| AMS 6916-0200-G-V | CSP528-08-01-01S-R27-L14 | 01S | 93S | 0.020 | 6 | 2 |
| AMS 6916-0350-D-B-H | CSP528-08-01-01S-R27-L14 | 01S | 93S | 0.020 | 6 | 2 |
| AMS 6916-0350-D-H | CSP528-08-01-01S-R27-L14 | 01S | 93S | 0.020 | 6 | 2 |
| AMS 6916-0350-G-V | CSP528-08-01-01S-R27-L14 | 01S | 93S | 0.020 | 6 | 2 |
| AMS 6916-0500-A-H | CSP528-08-01-01S-R27-L14 | 01S | 93S | 0.020 | 6 | 2 |
| AMS 6916-1000-A-H | CSP528-08-01-01S-R27-L14 | 01S | 93S | 0.020 | 6 | 2 |
| AMS 6916-1000-D-B-H | CSP528-08-01-01S-R27-L14 | 01S | 93S | 0.020 | 6 | 2 |
| AMS 6916-1000-D-H | CSP528-08-01-01S-R27-L14 | 01S | 93S | 0.020 | 6 | 2 |
| AMS 6916-1000-G-V | CSP528-08-01-01S-R27-L14 | 01S | 93S | 0.020 | 6 | 2 |
| AMS 6916-1200-B-H | CSP528-08-01-01S-R27-L14 | 01S | 93S | 0.020 | 6 | 2 |

See last page for other mounting types including low profile options.
Heat sink socket available to reduce heat and noise. Contact Andon for details.

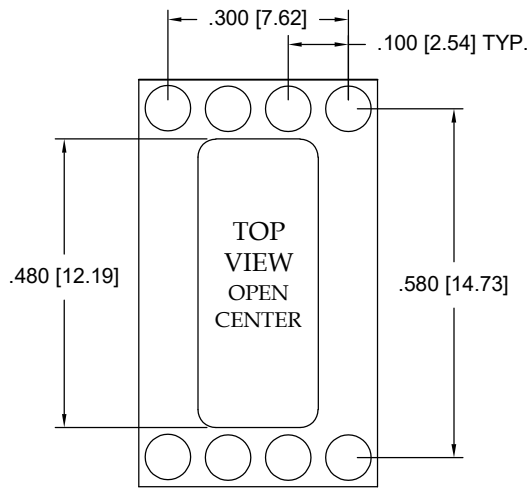


FIG: 1

Thru-Hole: CSP580-08-01-01S-R27-L14
Surface Mount: CSP580-08-01-93S-R27-L14

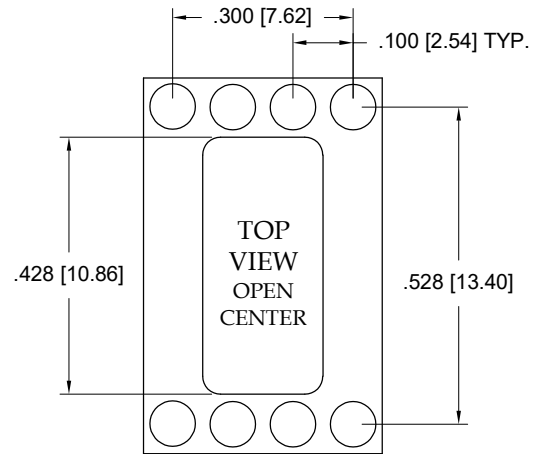


FIG: 2

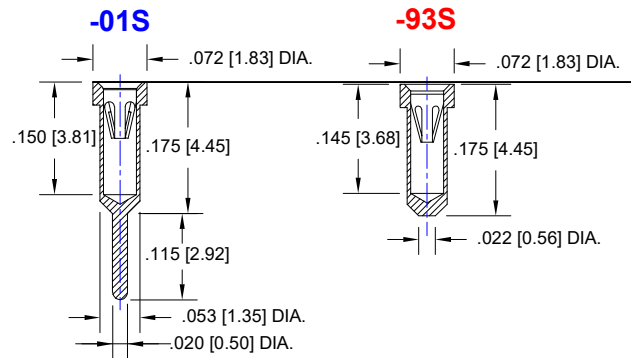
Thru-Hole: CSP528-08-01-01S-R27-L14
Surface Mount: CSP528-08-01-93S-R27-L14

Material:

Insulator: Hi-Temp UL 94V-O
Terminal: Brass, per ASTM-B16
Contact: BeCu, Per ASTM-B194

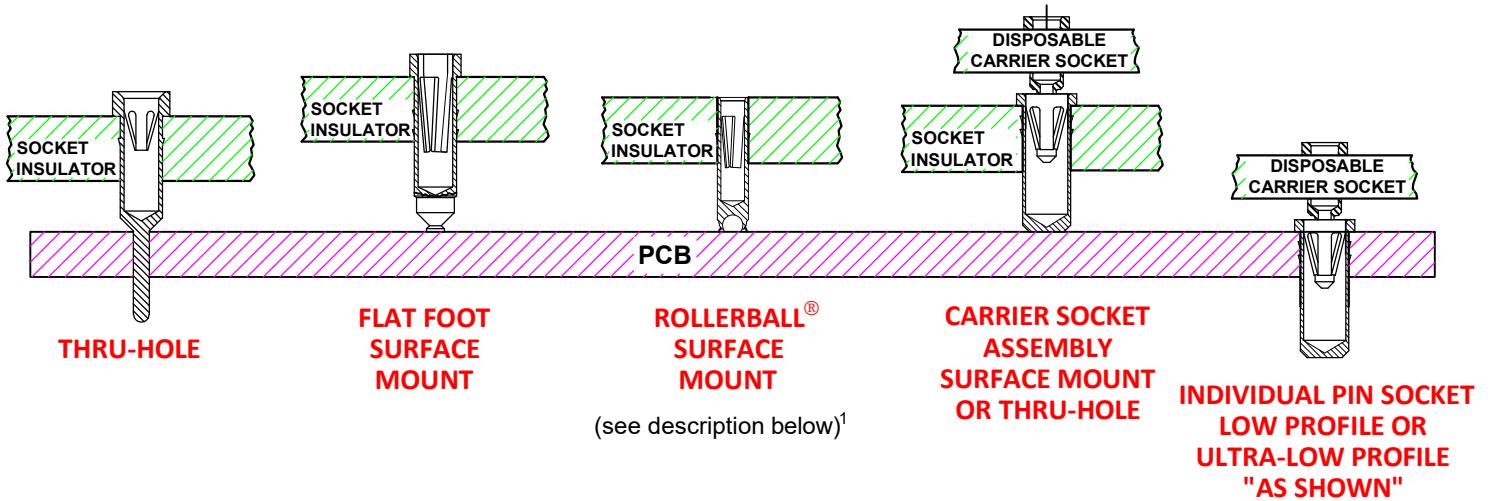
Plating: RoHS COMPLIANT
R27 TERMINAL: GOLD / CONTACT: GOLD
R17 TERMINAL: TIN / CONTACT: GOLD
OTHER PLATINGS AVAILABLE

| Terminal Acceptance and Forces | | | | | | | |
|--------------------------------|----------------------|-----------------|------------------|--------------------------------|----------------------|-----------------|------------------|
| Thru Hole Socket Terminals | | | | Surface Mount Socket Terminals | | | |
| Thru Hole Terminal | Accepts Pin Diameter | Insertion Force | Withdrawal Force | Surface Mount Terminal | Accepts Pin Diameter | Insertion Force | Withdrawal Force |
| -01S | Ø.018 [Ø.46] | 9.0 oz Avg. | 2.0 oz Min | -93S | Ø.018 [Ø.46] | 9.0 oz Avg. | 2.0 oz Min |



Andon Proprietary Information
RoHS Compliant

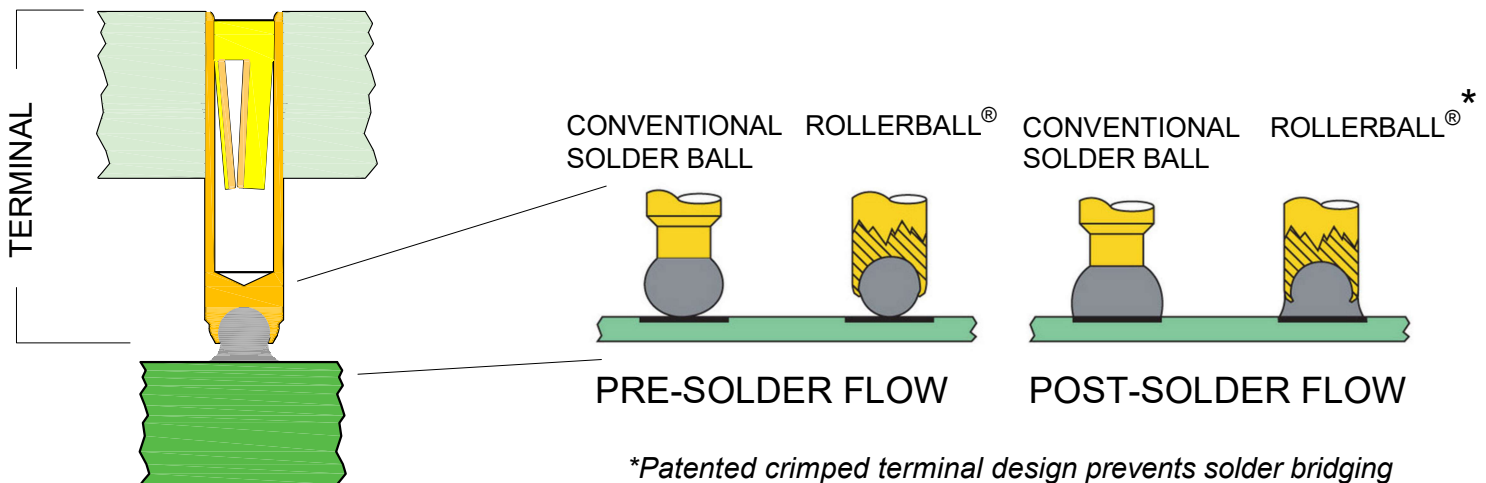
Analog Microelectronics GmbH 05/13/2026



¹Andon's patented Rollerball® socket terminal option provides more accurate soldering, a stronger connection, and improved electrical connectivity - especially under shock and vibration - than other solder ball terminal designs. Better yet, it can enable you to avoid expensive rework and scrap - especially with larger PCBs where coplanarity is an inherent challenge.

The bottom of these terminals has a radiused hole, to prevent gas entrapment. The terminal is crimped over the solder ball beyond its hemisphere, encapsulating it - leaving just enough of the solder ball exposed to provide sufficient solder without the solder bridging common in conventional solder ball terminal designs.

With this unique design, the critical distance between the terminal and the PC board pad is typically reduced from .036"-.040" to .018"-.022". As such, the solder becomes part of the "anchor" cross-section - providing additional mechanical strength to the connection, as well as improved electrical connectivity. Because it also provides controlled dispersion of solder, this encapsulated solder ball reduces the risk of solder bridging inherent in conventional solder ball terminal designs.



For fast, accurate placement of SIP sockets and ultra-low profile terminals

Phase 1:
Receive Carrier Assemblies designed to your pin layout.



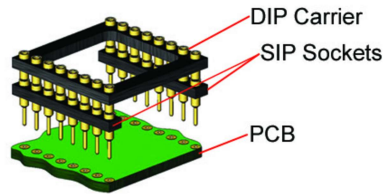
Phase 2:
Place carrier assemblies onto PCB; run through your soldering process.



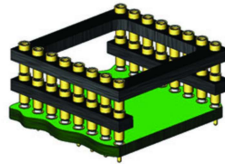
Phase 3:
Remove carrier and plug in your device; discard carrier or send back to our factory for reloading.

DIP

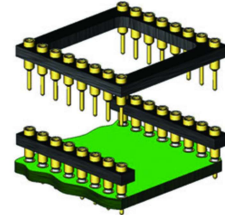
Before Soldering



During Soldering

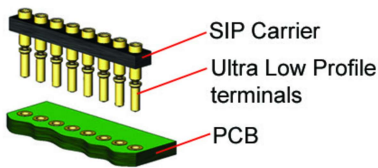


After Soldering

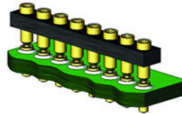


ULTRA-LOW PROFILE SIP

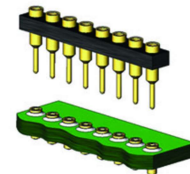
Before Soldering



During Soldering

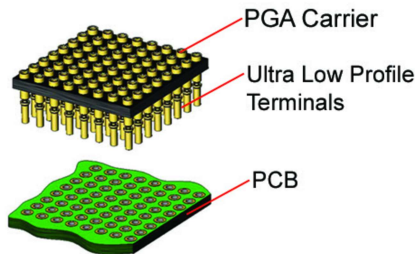


After Soldering

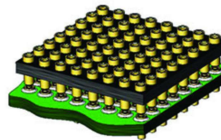


ULTRA-LOW PROFILE PGA

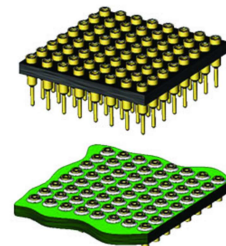
Before Soldering



During Soldering

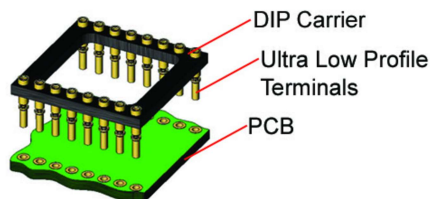


After Soldering

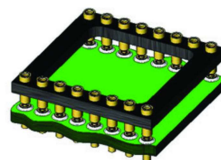


ULTRA LOW PROFILE DIP

Before Soldering



During Soldering



After Soldering

