



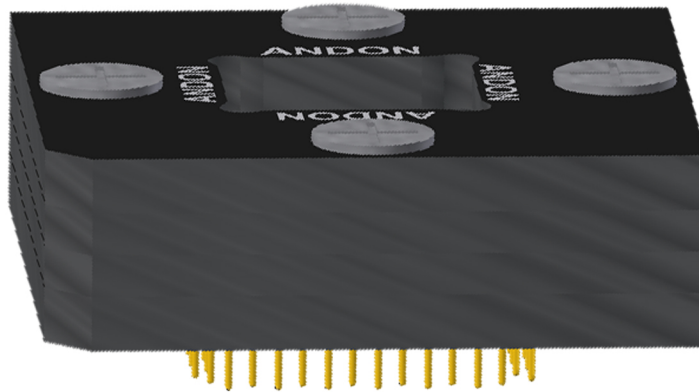
**ANDON**  
INTERCONNECTION SPECIALISTS



RoHS Compliant  
ISO 9001  
Certified

## **HIGH RELIABILITY IMAGE SENSOR SOCKETS FOR**

*PIX PixArt Imaging Inc.*

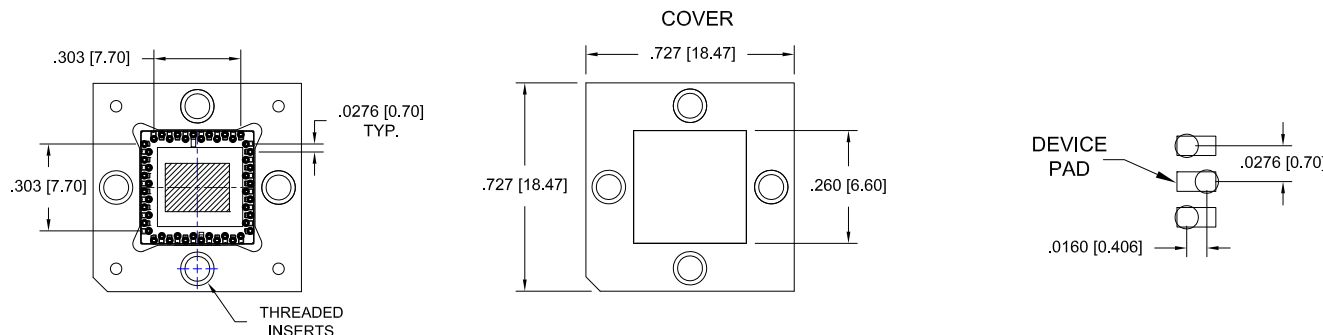


***Featuring Andon's Unique Senstac™ Contact***

PIXART IMAGING INC. is a trade mark of PIXART IMAGING INC.

PIXART IMAGING INC.						
PIXART IMAGING INC. Model Number	Andon Part Number Replace "XXX" with Terminal Type	Terminal Type		Pin Ø [in]	Figure Number	Page Number
NTSC/PAL DIGITAL IMAGE SOC	685-48-XX-XXX-R27-L14-X	491	500	-	1	1
LOW POWER OPTICAL MOUSE SENSOR	CSP434-08-01-XXX-R27-L14	01S	93S	.018	2	1
PAC7366	685-48-XX-XXX-R27-L14-X	491	500	-	1	1

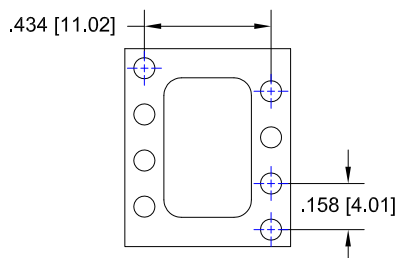
See last page for other mounting types including low profile options.  
Heat sink socket available to reduce heat and noise. Contact Andon for details.



**Fig. 01**

**48 Pins**  
Thru-Hole: 685-48-TH-491-R27-L14-X  
Surface Mount: 685-48-SM-500-R27-L14-X

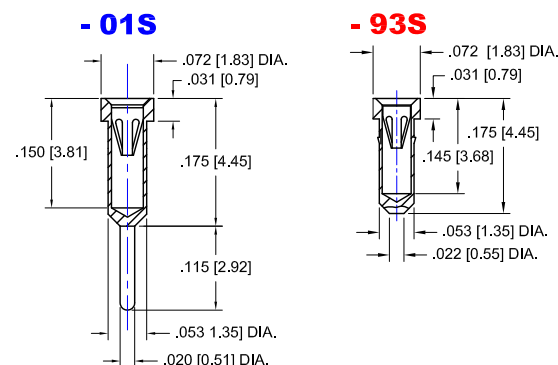
Replace "-X" with "-1" for  
index pins or "-0" for none



**Fig. 02**

Thru-Hole: CSP434-08-01-01S-R27-L14  
Surface Mount: CSP434-08-01-93S-R27-L14

**NON MAGNETIC PLATING AVAILABLE - G55**



## Technical Information

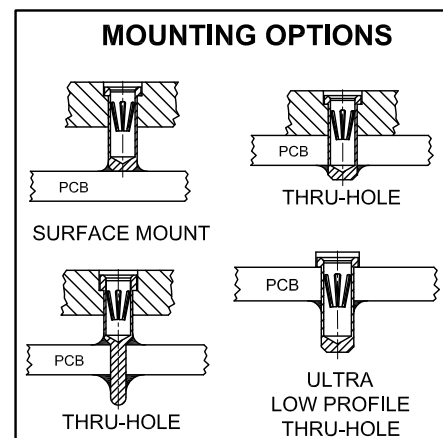
### Material:

Insulator: Hi-Temp UL 94V-O  
Terminal: Brass, per ASTM-B16  
Contact: BeCu, Per ASTM-B194

### Plating: RoHS COMPLIANT

R15 TERMINAL: GOLD / CONTACT: GOLD  
R17 TERMINAL: TIN / CONTACT: GOLD  
OTHER PLATINGS AVAILABLE

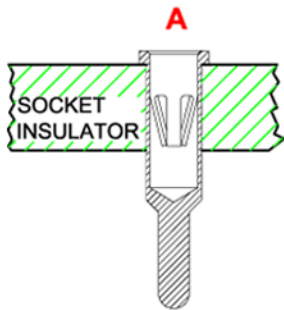
Terminal Acceptance and Forces							
Thru Hole Terminals				Surface Mount Terminals			
Thru Hole Terminal	Accepts Pin Diameter	Insertion Force	Withdrawal Force	Surface Mount Terminal	Accepts Pin Diameter	Insertion Force	Withdrawal Force
-01S	Ø.018 [Ø0.46]	9.0 oz Avg.	2.0 oz Min	-93S	Ø.018 [Ø0.46]	9.0 oz Avg.	2.0 oz Min



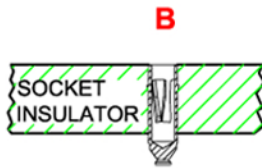
**"ANDON PROPRIETARY INFORMATION"**  
RoHS Compliant

\*Sockets are not drawn to scale PIXART IMAGING INC. 2/12/2016

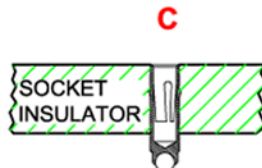
## Mounting Options



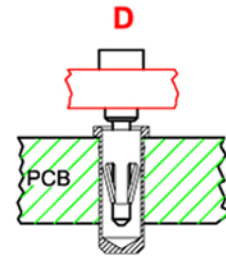
**THRU-HOLE**



**SMD-FLAT FOOT**



**ROLLERBALL**



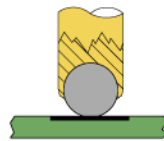
PCB FOR THRU-HOLE  
INSULATOR FOR SMD

**CARRIER  
WITH OR WITHOUT  
SOLDER  
WASHER**



**PIN SOCKET  
BULK  
WITH OR WITHOUT  
SOLDER  
WASHER**

**ROLLERBALL®  
SOCKET**



**BEFORE SOLDERING**

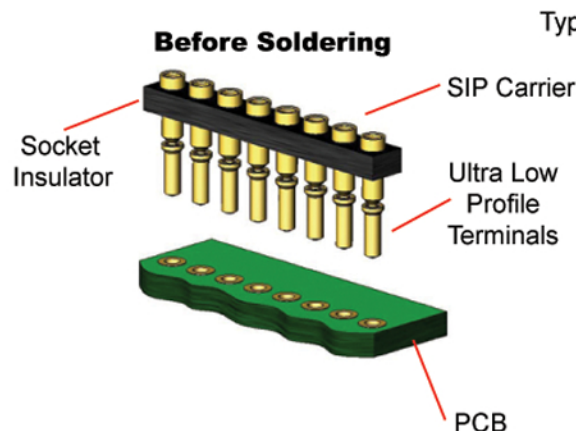
**ROLLERBALL®  
SOCKET**



**AFTER SOLDERING**

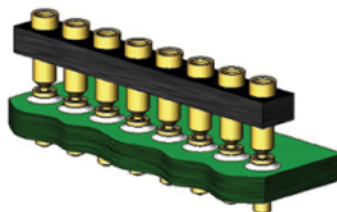
## ULTRA LOW PROFILE SIP/DIP/PGA CARRIER ASSEMBLY

**Before Soldering**

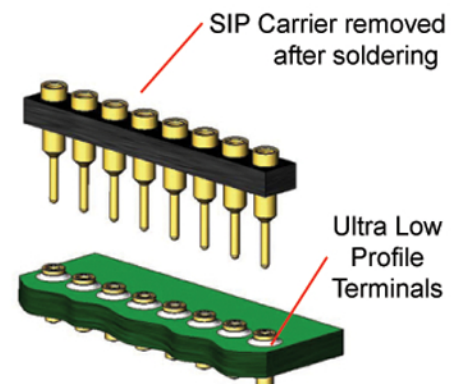


Type D

**During Soldering**



**After Soldering**



Available with or without solder washer