

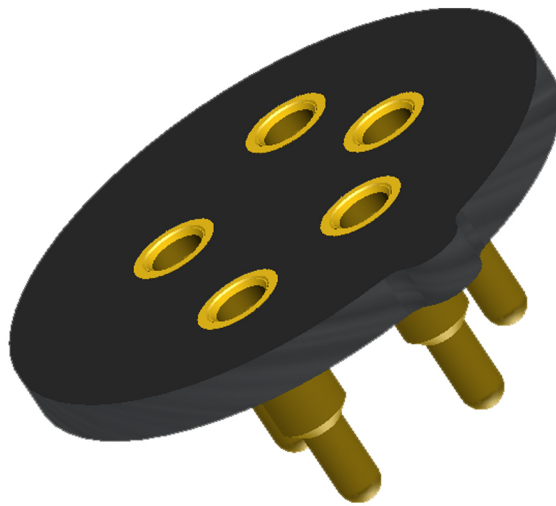


ANDON
INTERCONNECTION SPECIALISTS



RoHS Compliant
ISO 9001
Certified

**HIGH RELIABILITY
OPTOELECTRONIC SOCKETS FOR
MIPEX TECHNOLOGY/OPTOSENSE LLC**



Featuring Andon's Unique Senstac™ Contact

MIPEX TECHNOLOGY/OPTOSENSE LLC is a trade mark of MIPEX TECHNOLOGY/OPTOSENSE LLC

MIPEX TECHNOLOGY/ OPTOSENSE LLC						
MIPEX TECHNOLOGY/ OPTOSENSE LLC Model Number	Andon Part Number Replace "XXX" with Terminal Type	Terminal Type		Pin Ø [in]	Figure Number	Page Number
		Thru-Hole	Surface Mount			
MIPEX ALARM SENSOR	R591-SP04-01N-XXX-R27-L14	433E	285E	.040	1	1
MIPEX-02-X-X-1.1	R591-SP04-01N-XXX-R27-L14	433E	285E	.040	1	1
MIPEX-02-X-X-1.1A	R591-SP04-01N-XXX-R27-L14	433E	285E	.040	1	1
MIPEX-02-X-X-1.1X	R591-SP04-01N-XXX-R27-L14	433E	285E	.040	1	1
MIPEX-02-X-X-2.1	R591-SP04-01N-XXX-R27-L14	433E	285E	.040	1	1
MIPEX-02-X-X-2.1A	R591-SP04-01N-XXX-R27-L14	433E	285E	.040	1	1
MIPEX-02-X-X-2.1X	R591-SP04-01N-XXX-R27-L14	433E	285E	.040	1	1
MIPEX-02-X-X-3.1	R591-SP04-01N-XXX-R27-L14	433E	285E	.040	1	1
MIPEX-02-X-X-3.1A	R591-SP04-01N-XXX-R27-L14	433E	285E	.040	1	1
MIPEX-02-X-X-X1X	R591-SP04-01N-XXX-R27-L14	433E	285E	.040	1	1
MIPEX-03-X-X-1.1	R591-SP04-01N-XXX-R27-L14	433E	285E	.040	1	1
MIPEX-03-X-X-1.2	R420-SP05-04T-XXX-R27-L14	436P55	440P55	.060	2	1
MIPEX-03-X-X-1.3	R420-SP05-04T-XXX-R27-L14	436P55	440P55	.060	2	1
MIPEX-03-X-X-1.4	R420-SP05-04T-XXX-R27-L14	436P55	440P55	.060	2	1
MIPEX-03-X-X-1.X	R591-SP04-01N-XXX-R27-L14	433E	285E	.040	1	1

See last page for other mounting types including low profile options.
Heat sink socket available to reduce heat and noise. Contact Andon for details.

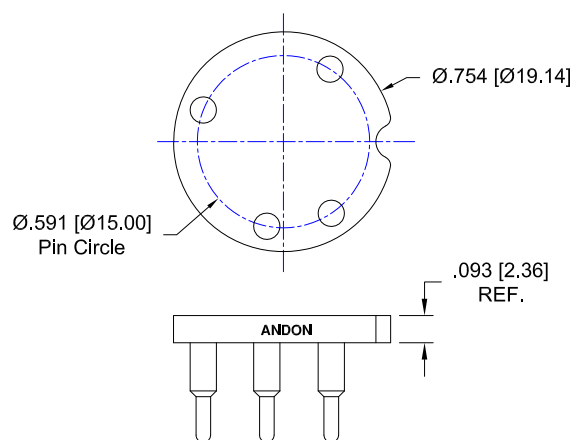


FIG. 1

Thru-Hole: R591-SP04-01N-433E-R27-L14
Surface Mount: R591-SP04-01N-285E-R27-L14

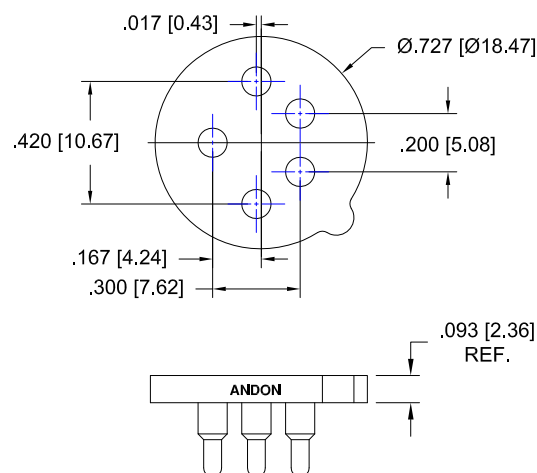


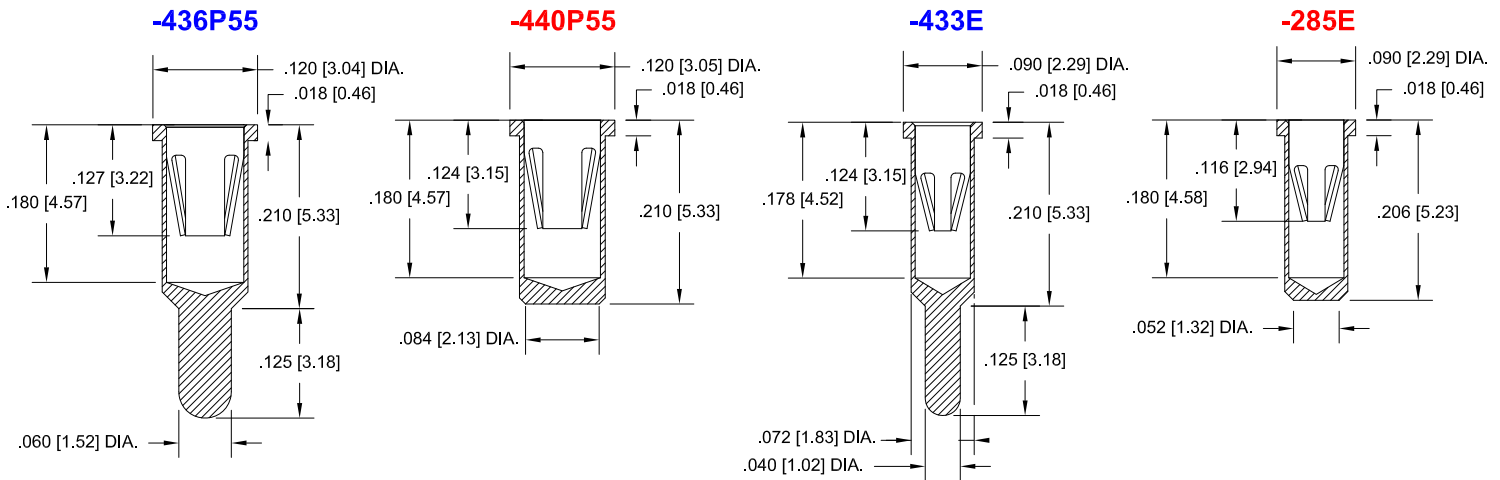
FIG. 2

Thru-Hole: R280-0806-02T-433E-R27-L14
Surface Mount: R280-0806-02T-285E-R27-L14

MIPEX TECHNOLOGY/OPTOSENSE LLC Continued

Socket Terminal Details

Cross Section View Shown Units: in [mm]



Technical Information

Material:

Insulator: Hi-Temp UL 94V-O
Terminal: Brass, per ASTM-B16
Contact: BeCu, Per ASTM-B194

Plating: RoHS COMPLIANT

R27 TERMINAL: GOLD / CONTACT: GOLD

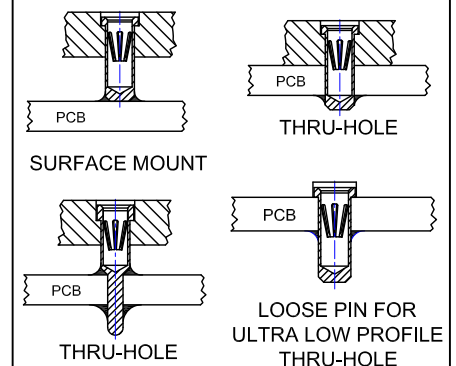
R17 TERMINAL: TIN / CONTACT: GOLD

OTHER PLATINGS AVAILABLE

Terminal Acceptance and Forces

Thru Hole Terminals				Surface Mount Terminals			
Thru Hole Terminal	Accepts Pin Diameter	Insertion Force	Withdrawal Force	Surface Mount Terminal	Accepts Pin Diameter	Insertion Force	Withdrawal Force
-433E	Ø.040 [Ø1.02]	36.0 oz Max	3.9 oz Min	-285E	Ø.040 [Ø1.02]	36.0 oz Max	3.9 oz Min
-436P55	Ø.060 [Ø1.52]	15.5 oz Max	2.1 oz Min	-440P55	Ø.060 [Ø1.52]	15.5 oz Max	2.1 oz Min

MOUNTING OPTIONS

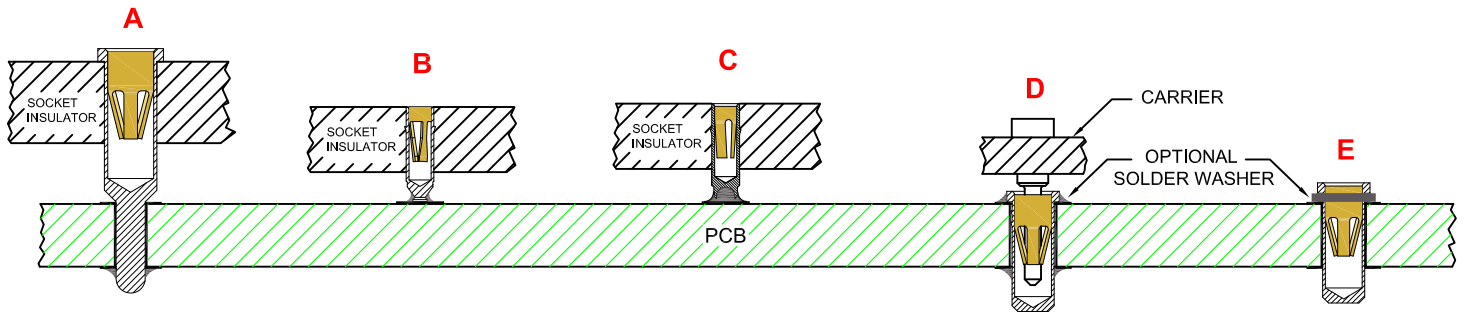


©Copyright 2016 Andon Electronics Corporation. All Rights Reserved. This material is protected under US and other copyrights and may not be copied, sold, or redistributed in any form without written permission of Andon Electronics Corporation. Copyrights and trademarks are property of their respective companies. We reserve the right to change specifications without notice. Andon makes no warranty, expressed or implied, as to the suitability of the sockets for the intended purpose.

*Sockets are not drawn to scale MIPEX TECHNOLOGY/OPTOSENSE LLC 10/4/2016

ANDON ELECTRONICS CORPORATION
4 Court Drive, Lincoln RI 02865, United States of America

www.andonelectronics.com or www.andonelect.com
Phone 401-333-0388 Fax 401-333-0287
Email Info@andonelect.com



**THRU-HOLE
SOCKET**

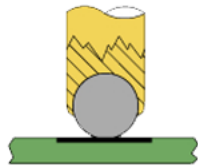
SMD-SOCKET

**SMD
ROLLERBALL®
SOCKET
(PATENTED)**

**REMOVABLE
CARRIER
WITH ULTRA-LOW
PROFILE PIN SOCKETS**

**INDIVIDUAL
ULTRA-LOW PROFILE
PIN SOCKETS
(BEFORE SOLDERING)**

**ROLLERBALL®
SOCKET**



BEFORE SOLDERING

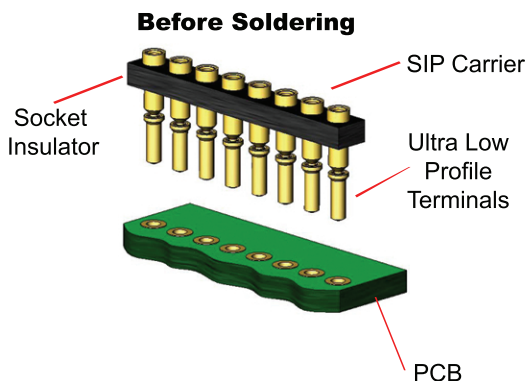
**ROLLERBALL®
SOCKET**



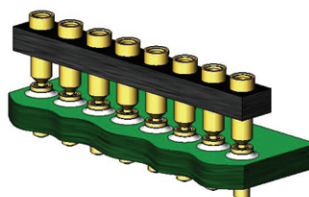
AFTER SOLDERING

A more reliable solder joint for surface mount applications !

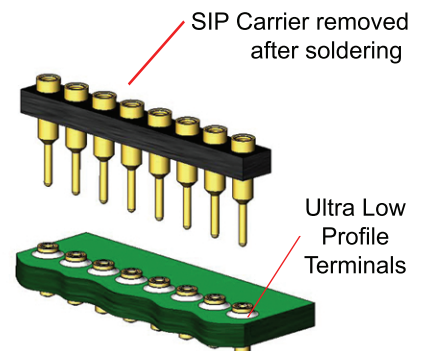
ULTRA LOW PROFILE SIP/DIP/PGA CARRIER ASSEMBLY See 'D' above



During Soldering



After Soldering



Available with or without solder washer