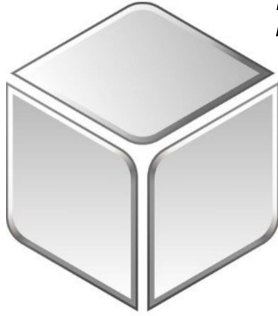
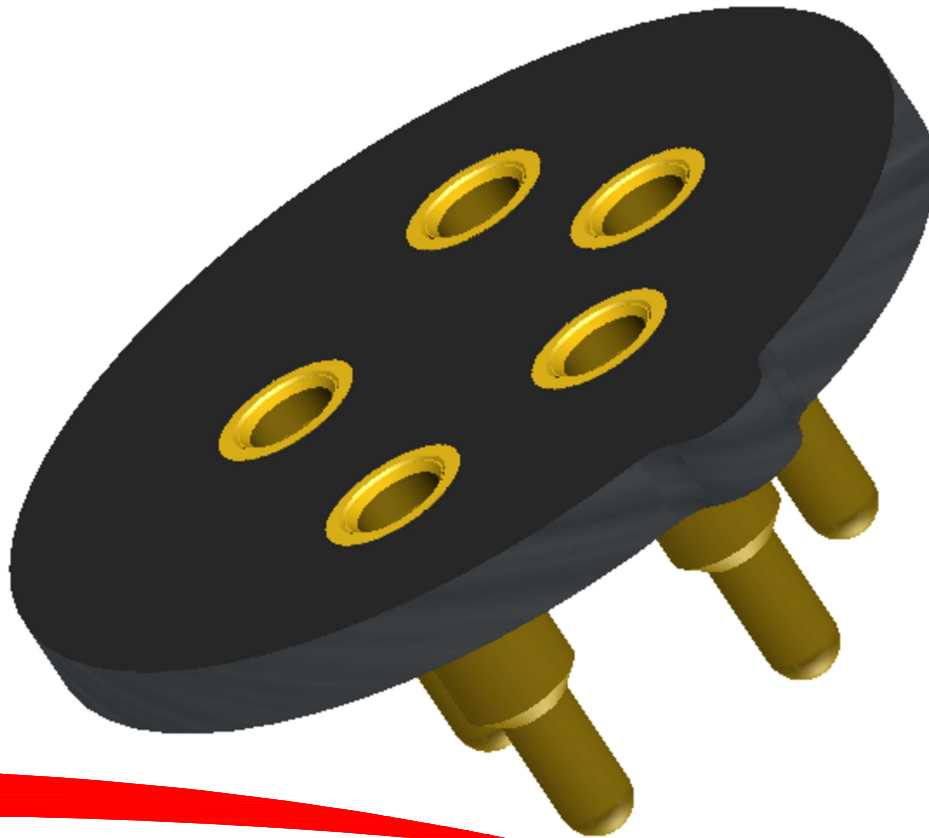




**High-Reliability Gas Sensor Sockets  
for CUBIC SENSOR**

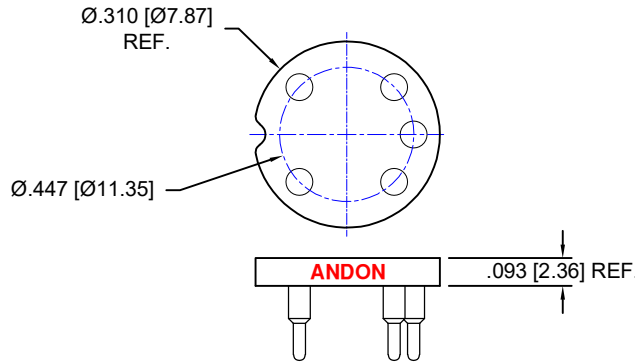


**CUBIC**

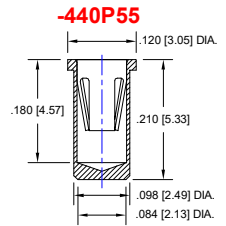
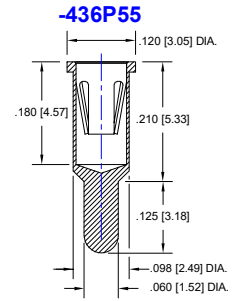


**Featuring Andon's Unique Senstac<sup>TM</sup> Contact**

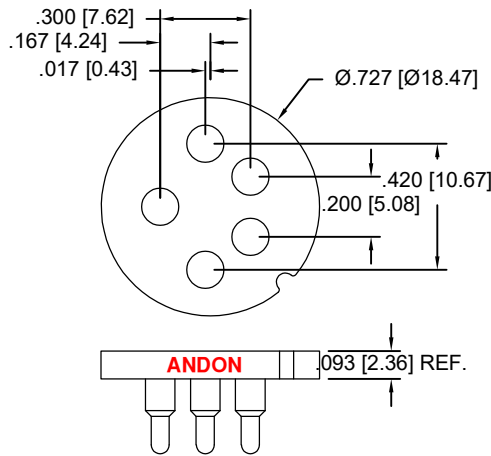
CUBIC SENSOR Model Number
SRH-05
SRH-1
SRH-2
SRH-5
SRH-10
SRH-20
SJH-5
SJH-100
SBH-2
SBrH-5 3



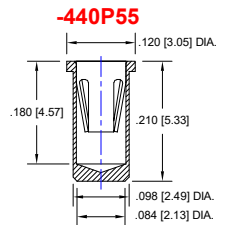
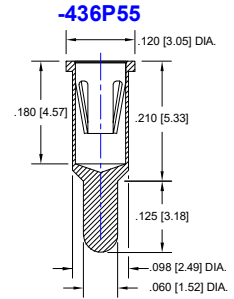
Thru-Hole: R447-0805-01N-436P55-R27-L14  
 Surface Mount: R447-0805-01N-440P55-R27-L14



CUBIC SENSOR Model Number
SRH-05XD
SRH-1XD
SRH-2XD
SRH-5XD
SRH-10XD
SRH-20XD
SJH-5XD
SJH-100XD
SBH-2XD



Thru-Hole: R420-SP05-04N-436P55-R27-L14  
 Surface Mount: R420-SP05-04N-440P55-R27-L14



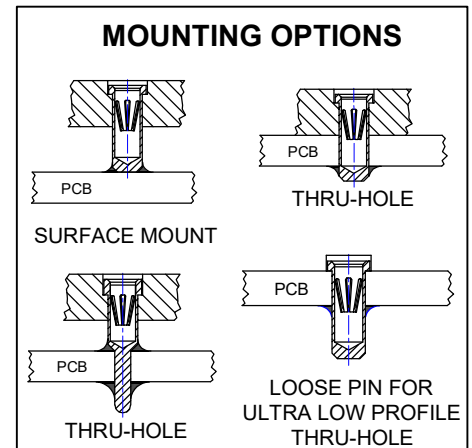
## Technical Information

### Material:

Insulator: Hi-Temp UL 94V-O  
 Terminal: Brass, per ASTM-B16  
 Contact: BeCu, Per ASTM-B194

**Plating: RoHS COMPLIANT**  
**R27 TERMINAL: GOLD / CONTACT: GOLD**  
**OTHER PLATINGS AVAILABLE**

Terminal Acceptance and Forces							
Thru Hole Terminals				Surface Mount Terminals			
Thru Hole Terminal	Accepts Pin Diameter	Insertion Force	Withdrawal Force	Surface Mount Terminal	Accepts Pin Diameter	Insertion Force	Withdrawal Force
-436P55	Ø.060 [Ø1.52]	15.5 oz AVG	2.1 oz Min	-440P55	Ø.060 [Ø1.52]	15.5 oz AVG	2.1 oz Min



Andon Proprietary Information  
 RoHS Compliant

\*Sockets are not drawn to scale CUBIC SENSOR 05/13/2026

**For fast, accurate placement of SIP sockets and ultra-low profile terminals**

Phase 1:  
Receive Carrier Assemblies designed to your pin layout.



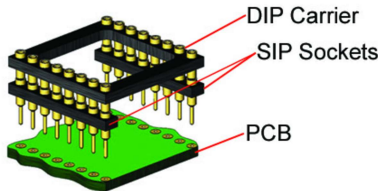
Phase 2:  
Place carrier assemblies onto PCB; run through your soldering process.



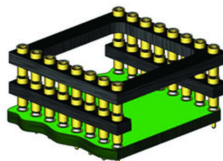
Phase 3:  
Remove carrier and plug in your device; discard carrier or send back to our factory for reloading.

**DIP**

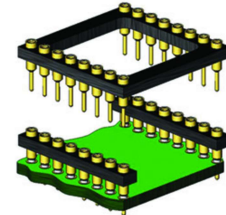
**Before Soldering**



**During Soldering**

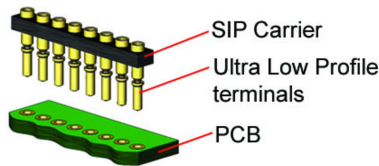


**After Soldering**

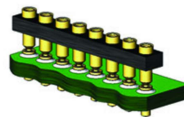


**ULTRA-LOW PROFILE SIP**

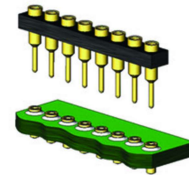
**Before Soldering**



**During Soldering**

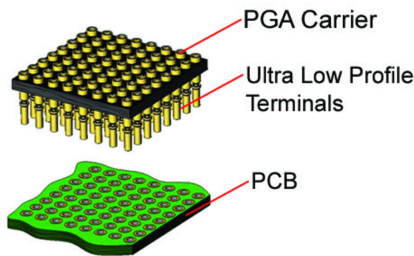


**After Soldering**

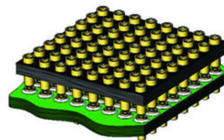


**ULTRA-LOW PROFILE PGA**

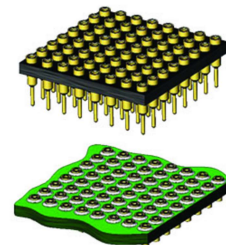
**Before Soldering**



**During Soldering**

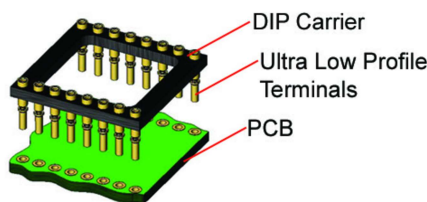


**After Soldering**

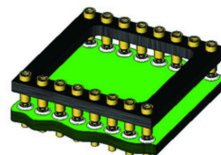


**ULTRA LOW PROFILE DIP**

**Before Soldering**



**During Soldering**



**After Soldering**

