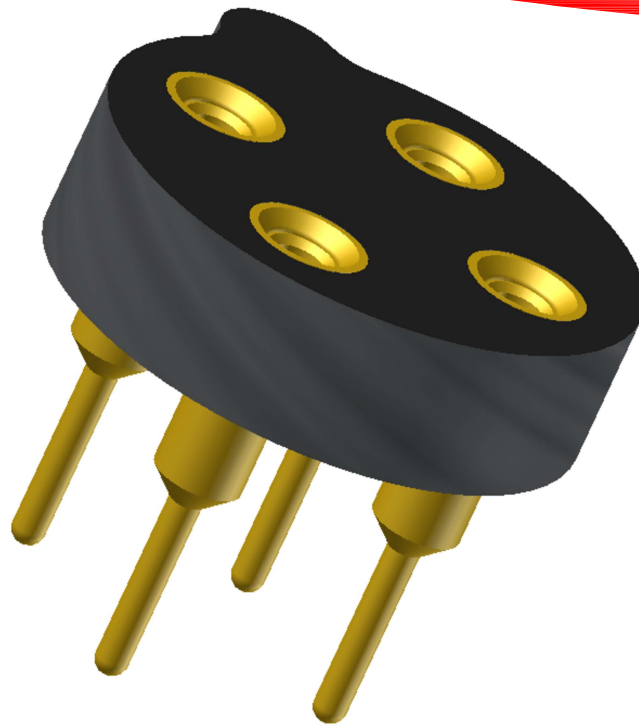




**High-Reliability Gas Sensor Sockets  
for Amphenol**

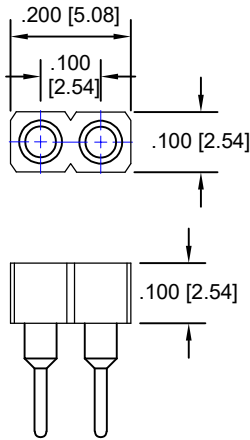
# Amphenol



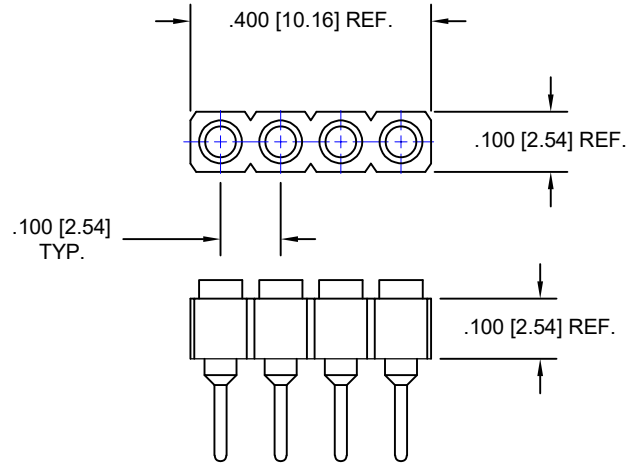
**Featuring Andon's Unique Senstac<sup>TM</sup> Contact**

Amphenol						
Amphenol Part Number	Andon Part Number Replace "XXX" With terminal Type	Terminal Type		Pin Ø [in]	Page Number	Figure Number
		Thru-Hole	Surface Mount			
HS12SP	303-002-XXX-R27-L14	01P28	93P28	0.025	1	1
HS20	303-002-XXX-R27-L14	01P28	93P28	0.020	1	1
HS30P	303-002-XXX-R27-L14	01P28	93P28	0.025	1	1
NPC-1210SENSE	C10-608-08-01-XXX-R27-L14	01P28	93P28	0.020	2	3
NPC-1220	2X 301-004-XXX-R27-L14	01P28	93P28	0.020	1	2
SITS-IRS-019-00	R200-0404-01T-XXX-R27-L14	01S	93S	0.020	2	5
ZTP-015	R070-0404-01T-XXX-R27-L14	400T4	414T4	0.010	2	4
ZTP-101T	R200-0404-01T-XXX-R27-L14	01S	93S	0.020	2	5
ZTP-115	R200-0404-01T-XXX-R27-L14	01S	93S	0.020	2	5
ZTP-135	R200-0404-01T-XXX-R27-L14	01S	93S	0.020	2	5
ZTP-135BS	R100-0404-02T-XXX-R27-L14	211S	265S	0.020	2	6
ZTP-135H	R200-0404-01T-XXX-R27-L14	01S	93S	0.020	2	5
ZTP-135L	R200-0404-01T-XXX-R27-L14	01S	93S	0.020	2	5
ZTP-135SR	R100-0404-02T-XXX-R27-L14	211S	265S	0.020	2	6
ZTP-135SRC1	R100-0404-02T-XXX-R27-L14	211S	265S	0.020	2	6
ZTP-148SR	R100-0404-02T-XXX-R27-L14	211S	265S	0.020	2	6
ZTP-315	R200-0404-01T-XXX-R27-L14	01S	93S	0.020	2	5
ZTPD-2210	R200-0404-01T-XXX-R27-L14	01S	93S	0.020	2	5

Heat sink socket available to reduce heat and noise. Contact Andon for details.

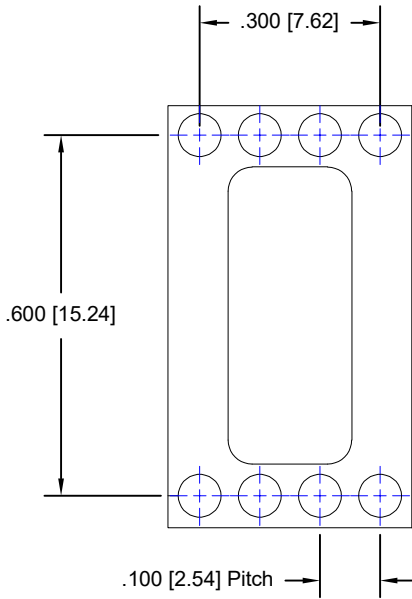


**FIG. 1**  
**Thru-Hole:** 303-002-01S-R27-L14  
**Surface Mount:** 303-002-93S-R27-L14

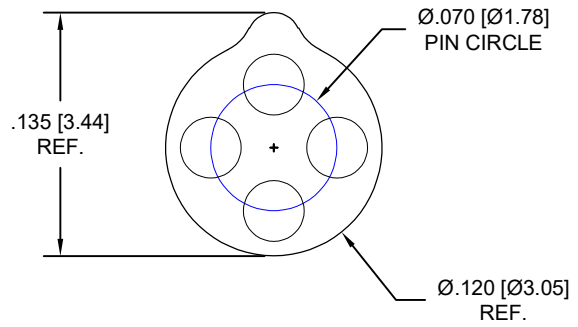


**FIG. 2**  
**Thru-Hole:** 301-004-01S-R27-L14  
**Surface Mount:** 301-004-93S-R27-L14

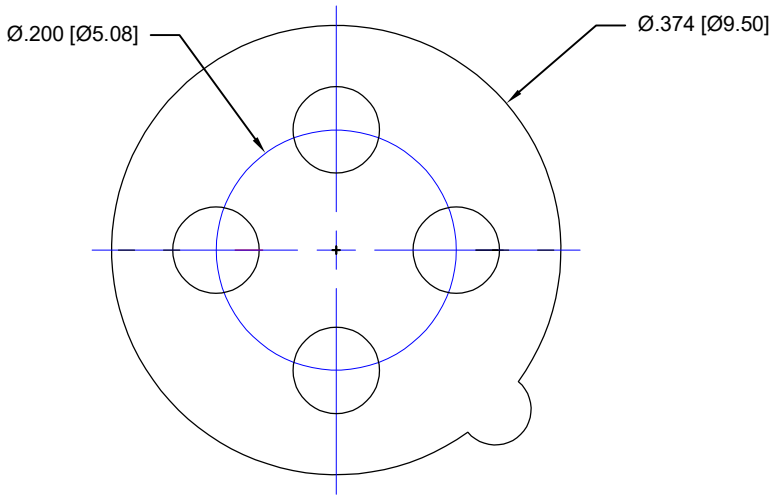
**Amphenol Continued**  
**Top View Shown**  
 Units: in [mm]



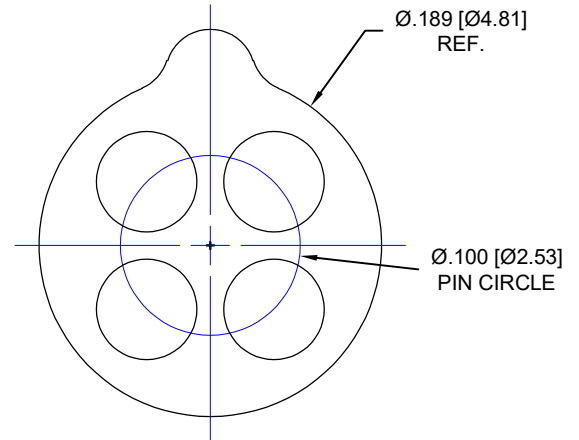
**FIG. 3**  
 Thru-Hole: C10-608-08-01-01S-R27-L14  
 Surface Mount: C10-608-08-01-93S-R27-L14



**FIG. 4**  
 Thru-Hole: R070-0404-01T-400T4-R27-L14  
 Surface Mount: R070-0404-01T-414T4-R27-L14



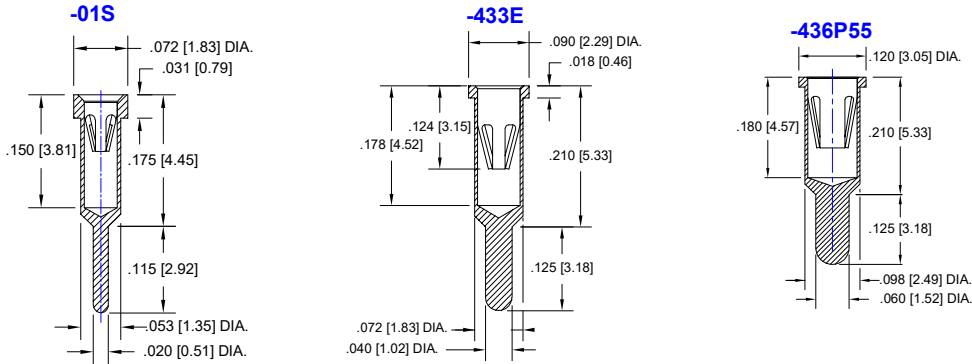
**FIG. 5**  
 Thru-Hole: R200-0404-01T-01S-R27-L14  
 Surface Mount: R200-0404-01T-93S-R27-L14



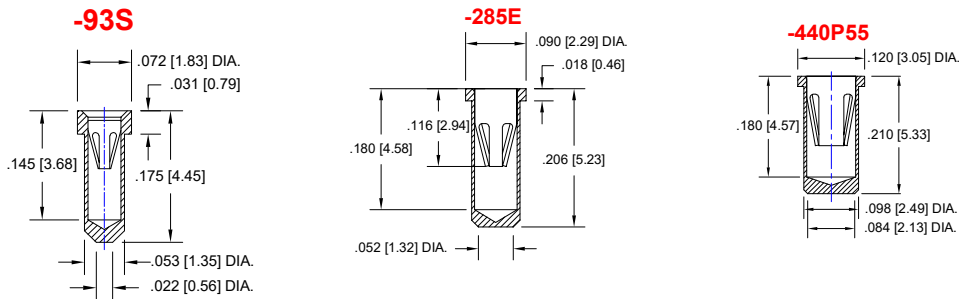
**FIG. 6**  
 Thru-Hole: R100-0404-02T-211S-R27-L14  
 Surface Mount: R100-0404-02T-265S-R27-L14

**Cross Section Shown**  
Units: in [mm]

## THRU HOLE OPTION



## SURFACE MOUNT OPTION

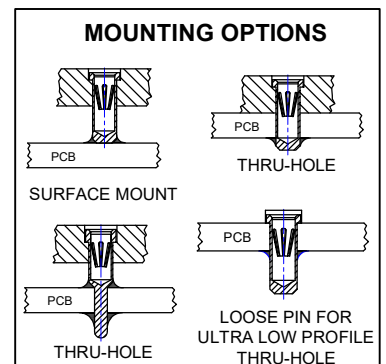


**Material:**

Insulator: Hi-Temp UL 94V-O  
 Terminal: Brass, per ASTM-B16  
 Contact: BeCu, Per ASTM-B194

**Plating: RoHS COMPLIANT**  
**R27 TERMINAL: GOLD / CONTACT: GOLD**  
**OTHER PLATINGS AVAILABLE**

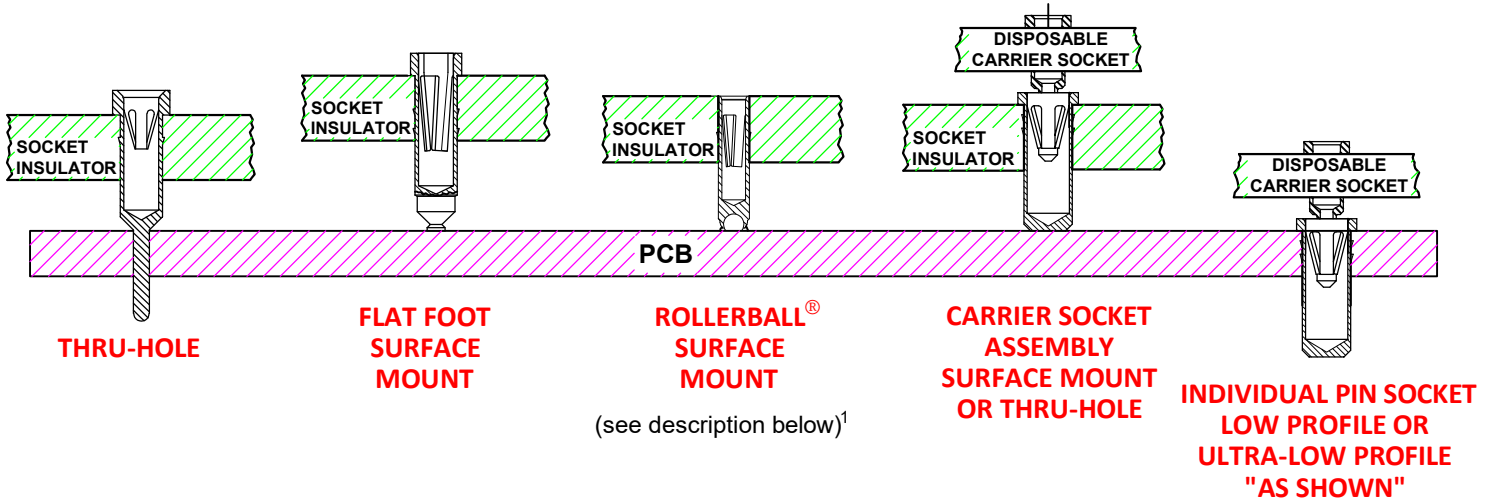
Terminal Acceptance and Forces							
Thru Hole Socket Terminals				Surface Mount Socket Terminals			
Thru Hole Terminal	Accepts Pin Diameter	Insertion Force	Withdrawal Force	Surface Mount Terminal	Accepts Pin Diameter	Insertion Force	Withdrawal Force
-433E	Ø.040 [Ø1.02]	36.0 oz Max	3.9 oz Min	-285E	Ø.040 [Ø1.02]	36.0 oz Max	3.9 oz Min
-436P55	Ø.060 [Ø1.52]	15.5 oz Max	2.1 oz Min	-440P55	Ø.060 [Ø1.52]	15.5 oz Max	2.1 oz Min
-01S	Ø.018 [Ø0.46]	9.0 oz Avg.	2.0 oz Min	-93S	Ø.018 [Ø0.46]	9.0 oz Avg.	2.0 oz Min



©Copyright 2026 Andon Electronics Corporation. All Rights Reserved. This material is protected under US and other copyrights and may not be copied, sold, or redistributed in any form without written permission of Andon Electronics Corporation. Copyrights and trademarks are property of their respective companies. We reserve the right to change specifications without notice. Andon makes no warranty, expressed or implied, as to the suitability of the sockets for the intended purpose.

**Andon Proprietary Information**  
**RoHS Compliant**

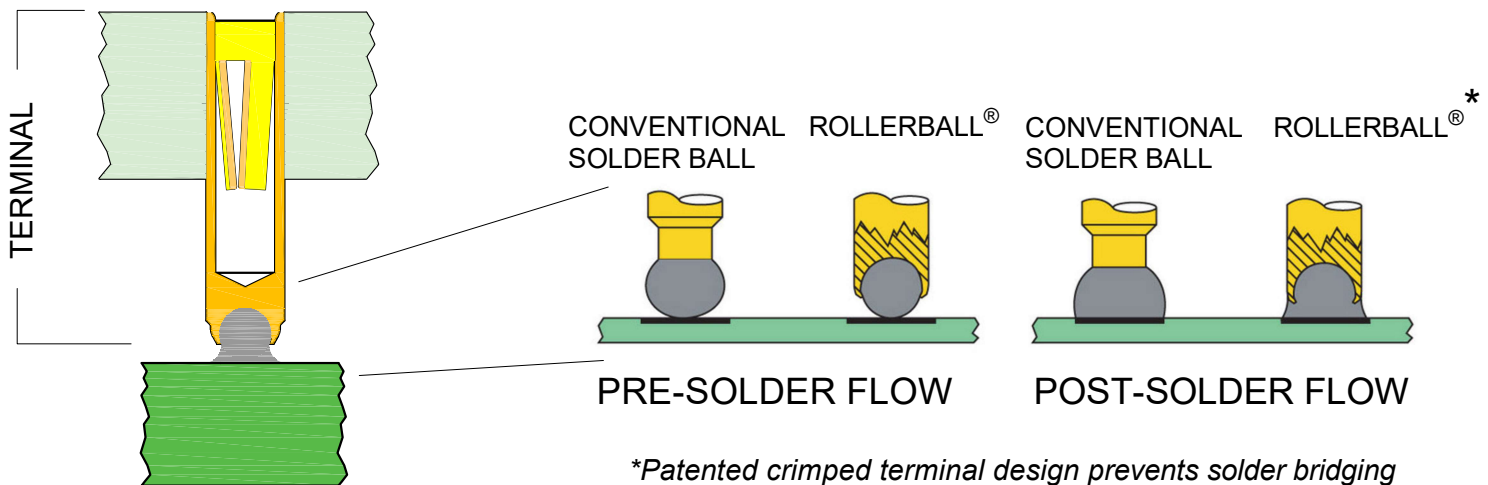
\*Sockets are not drawn to scale **Amphenol** 05/13/2026



<sup>1</sup>Andon's patented Rollerball<sup>®</sup> socket terminal option provides more accurate soldering, a stronger connection, and improved electrical connectivity - especially under shock and vibration - than other solder ball terminal designs. Better yet, it can enable you to avoid expensive rework and scrap - especially with larger PCBs where coplanarity is an inherent challenge.

The bottom of these terminals has a radiused hole, to prevent gas entrapment. The terminal is crimped over the solder ball beyond its hemisphere, encapsulating it - leaving just enough of the solder ball exposed to provide sufficient solder without the solder bridging common in conventional solder ball terminal designs.

With this unique design, the critical distance between the terminal and the PC board pad is typically reduced from .036"-.040" to .018"-.022". As such, the solder becomes part of the "anchor" cross-section - providing additional mechanical strength to the connection, as well as improved electrical connectivity. Because it also provides controlled dispersion of solder, this encapsulated solder ball reduces the risk of solder bridging inherent in conventional solder ball terminal designs.



**For fast, accurate placement of SIP sockets and ultra-low profile terminals**

**Phase 1:**  
Receive Carrier Assemblies designed to your pin layout.



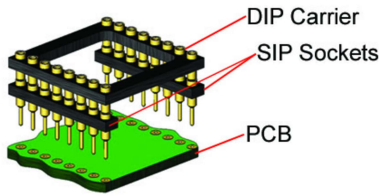
**Phase 2:**  
Place carrier assemblies onto PCB; run through your soldering process.



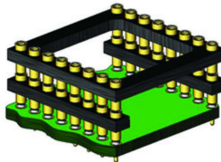
**Phase 3:**  
Remove carrier and plug in your device; discard carrier or send back to our factory for reloading.

**DIP**

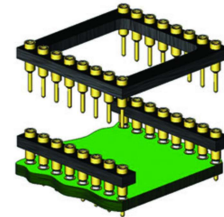
**Before Soldering**



**During Soldering**

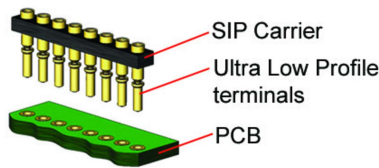


**After Soldering**

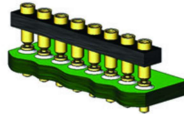


**ULTRA-LOW PROFILE SIP**

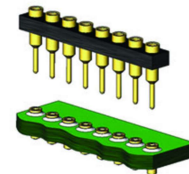
**Before Soldering**



**During Soldering**

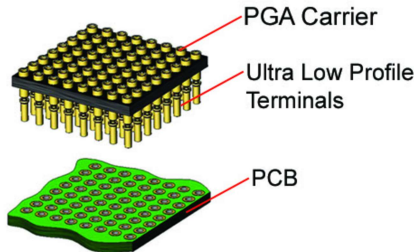


**After Soldering**

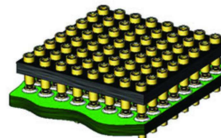


**ULTRA-LOW PROFILE PGA**

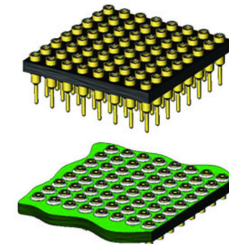
**Before Soldering**



**During Soldering**

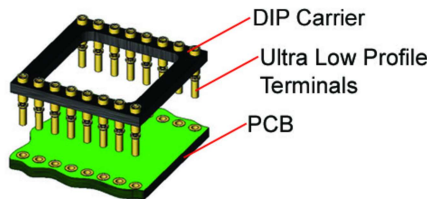


**After Soldering**

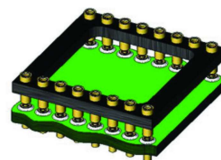


**ULTRA LOW PROFILE DIP**

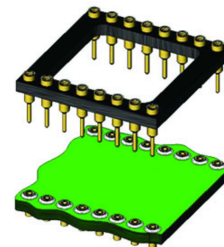
**Before Soldering**



**During Soldering**



**After Soldering**



©Copyright 2026 Andon Electronics Corporation. All Rights Reserved. This material is protected under US and other copyrights and may not be copied, sold, or redistributed in any form without written permission of Andon Electronics Corporation. Copyrights and trademarks are property of their respective companies. We reserve the right to change specifications without notice. Andon makes no warranty, expressed or implied, as to the suitability of the sockets for the intended purpose.

**Andon Proprietary Information**  
**RoHS Compliant**

\*Sockets are not drawn to scale Amphenol 05/13/2026