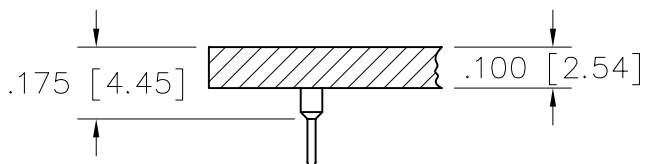


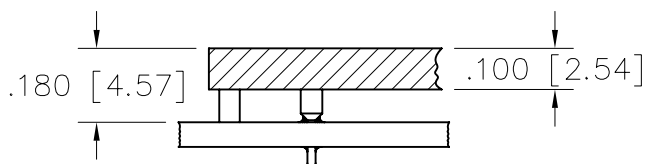
## SERIES 510



### STANDARD OFF THE SHELF

-S10= HIGH TEMP NYLON 46, 150°C  
SUITABLE FOR INFRARED SOLDERING  
OTHER MATERIALS AVAILABLE

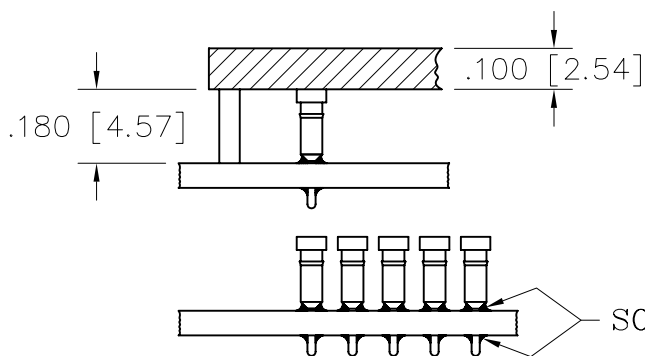
## SERIES 540



### INSULATOR WITH STANDOFFS FOR SOLDER FILLET TOP AND BOTTOM OF PCB

-S10= HIGH TEMP NYLON 46, 150°C  
SUITABLE FOR INFRARED SOLDERING  
OTHER MATERIALS AVAILABLE

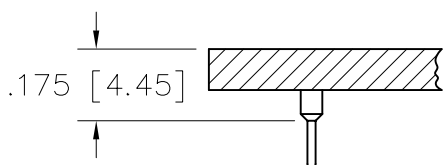
## SERIES 550



### PULL-OFF CARRIER SOCKET DISCARDABLE INSULATOR WITH STANDOFFS FOR SOLDER FILLET TOP AND BOTTOM OF PCB

-S10= HIGH TEMP NYLON 46, 150°C  
SUITABLE FOR INFRARED SOLDERING  
(DISCARD PLASTIC WAFER AFTER SOLDERING)  
OTHER MATERIALS AVAILABLE

## SERIES 575



### MATERIAL FOR CUSTOM DESIGN

-N10=.062[1.57] THICK GLASS EPOXY, FR4 140°C  
-L10=.050[1.27] THICK GLASS EPOXY, FR4 140°C  
-H10=.062[1.57] THICK POLYIMIDE HI-TEMP, 240°C

## ORDERING INFORMATION

5XX-XX-XX-XXX-XXX-PXX-S10

575-XX-XX-XXX-XXX-PXX-XXX

