



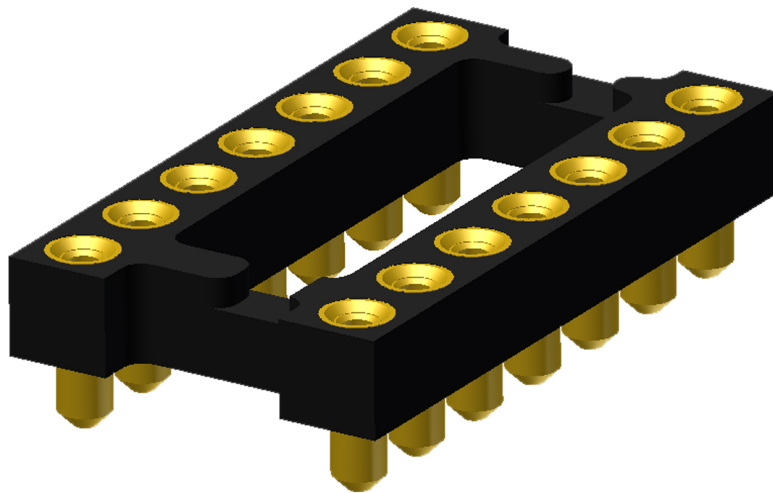
**ANDON**  
INTERCONNECTION SPECIALISTS



RoHS Compliant  
ISO 9001  
Certified

## ***HIGH RELIABILITY DISPLAY SOCKETS FOR***

**AVAGO**  
TECHNOLOGIES



***Featuring Andon's Unique Senstac™ Contact***

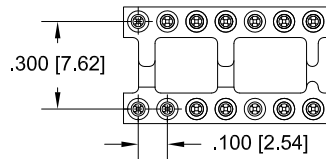
AVAGO TECHNOLOGIES is a trade mark of AVAGO TECHNOLOGIES

AVAGO TECHNOLOGIES AMERICAS SALES OFFICE						
AVAGO TECHNOLOGIES AMERICAS SALES OFFICE Model Number	Andon Part Number Replace "XXX" with Terminal Type	Terminal Type		Pin Ø [in]	Figure Number	Page Number
5082-761xSERIES	101-314-XXX-R27-L14	01S	93S	.018	1	2
5082-762xSERIES	101-314-XXX-R27-L14	01S	93S	.018	1	2
5082-765xSERIES	101-314-XXX-R27-L14	01S	93S	.018	1	2
5082-766xSERIES	101-314-XXX-R27-L14	01S	93S	.018	1	2
HDSP-360xSERIES/-460xSERIES	101-314-XXX-R27-L14	01S	93S	.018	1	2
5082-7656	101-314-XXX-R27-L14	01S	93S	.018	1	2
HDSP-740xSERIES	C10-210-10-01-XXX-R27-L14	01S	93S	.018	2	2
HDSP-750xSERIES	C10-210-10-01-XXX-R27-L14	01S	93S	.018	2	2
HDSP-780xSERIES	C10-210-10-01-XXX-R27-L14	01S	93S	.018	2	2
HDSP-A15xSERIES	C10-210-10-01-XXX-R27-L14	01S	93S	.018	2	2
HDSP-A40xSERIES	C10-210-10-01-XXX-R27-L14	01S	93S	.018	2	2
HDSP-7503-CD000	C10-210-10-01-XXX-R27-L14	01S	93S	.018	2	2
HDSP-523Y	101-618-XXX-R27-L14	01S	93S	.018	3	2
HDSP-52xE SERIES	101-618-XXX-R27-L14	01S	93S	.018	3	2
HDSP-52xG SERIES	101-618-XXX-R27-L14	01S	93S	.018	3	2
HDSP-52xY SERIES	101-618-XXX-R27-L14	01S	93S	.018	3	2
HDSP-U111	CSP2000-10-01-XXX-R27-L14	01S	93S	.018	4	2
HDSP-Uxxx SERIES	CSP2000-10-01-XXX-R27-L14	01S	93S	.018	4	2
HDSP-U1xx/U2xx/U3xx/U4xx/U5xx SERIES	CSP2000-10-01-XXX-R27-L14	01S	93S	.018	4	2
HDSP-5603-GH000	C10-210-10-01-XXX-R27-L14	01S	93S	.018	2	2
HDSP-5607	C10-210-10-01-XXX-R27-L14	01S	93S	.018	2	2
HDSP-550x	C10-210-10-01-XXX-R27-L14	01S	93S	.018	2	2
HDSP-552x	C10-210-10-01-XXX-R27-L14	01S	93S	.018	2	2
HDSP-560x	C10-210-10-01-XXX-R27-L14	01S	93S	.018	2	2
HDSP-562x	C10-210-10-01-XXX-R27-L14	01S	93S	.018	2	2
HDSP-570x	C10-210-10-01-XXX-R27-L14	01S	93S	.018	2	2
HDSP-572x	C10-210-10-01-XXX-R27-L14	01S	93S	.018	2	2
HDSP-335xSERIES	C10-210-10-01-XXX-R27-L14	01S	93S	.018	2	2
HDSP-N103	C10-210-10-01-XXX-R27-L14	01S	93S	.018	2	2
HDSP-F101	C10-210-10-01-XXX-R27-L14	01S	93S	.018	2	2
HDSP-555x SERIES	C10-210-10-01-XXX-R27-L14	01S	93S	.018	2	2
HDSP-751x SERIES	C10-210-10-01-XXX-R27-L14	01S	93S	.018	2	2
HDSP-A10x SERIES	C10-210-10-01-XXX-R27-L14	01S	93S	.018	2	2
HDSP-A80x SERIES	C10-210-10-01-XXX-R27-L14	01S	93S	.018	2	2
HDSP-A90x SERIES	C10-210-10-01-XXX-R27-L14	01S	93S	.018	2	2
HDSP-E10x SERIES	C10-210-10-01-XXX-R27-L14	01S	93S	.018	2	2
HDSP-F10x SERIES	C10-210-10-01-XXX-R27-L14	01S	93S	.018	2	2
HDSP-G10x SERIES	C10-210-10-01-XXX-R27-L14	01S	93S	.018	2	2
HDSP-H10x SERIES	C10-210-10-01-XXX-R27-L14	01S	93S	.018	2	2
HDSP-K12x	C10-210-10-01-XXX-R27-L14	01S	93S	.018	2	2
HDSP-N10x SERIES	C10-210-10-01-XXX-R27-L14	01S	93S	.018	2	2
HDSP-390x SERIES	101-618-XXX-R27-L14	01S	93S	.018	3	2
HDSP-420x SERIES	101-618-XXX-R27-L14	01S	93S	.018	3	2
HDSP-860x SERIES	101-618-XXX-R27-L14	01S	93S	.018	3	2
HDSP-N15x SERIES	101-618-XXX-R27-L14	01S	93S	.018	3	2
HDSP-3901	101-618-XXX-R27-L14	01S	93S	.018	3	2
HDSP-K511-GH000	C10-210-10-01-XXX-R27-L14	01S	93S	.018	2	2
HDSP-AX11	101-310-XXX-R27-L14	01S	93S	.018	5	2
HDSP-AX13 SERIES	101-310-XXX-R27-L14	01S	93S	.018	5	2
HDSP-FX11/-FX13 SERIES	101-310-XXX-R27-L14	01S	93S	.018	5	2
HDSP-HS11/-HX13 SERIES	101-310-XXX-R27-L14	01S	93S	.018	5	2
HDSP-KX11/-KX13 SERIES	101-310-XXX-R27-L14	01S	93S	.018	5	2

See last page for other mounting types including low profile options.  
Heat sink socket available to reduce heat and noise. Contact Andon for details.

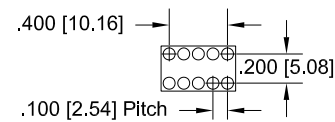
## AVAGO TECHNOLOGIES AMERICAS SALES OFFICE *Continued*

### Socket Terminal Details *Cross Section View Shown Units: in [mm]*



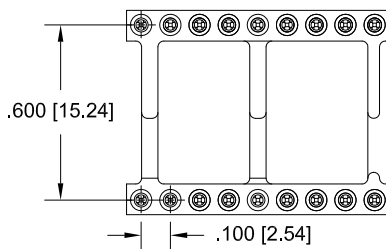
**Fig. 1**

Thru-Hole: 101-314-01S-R27-L14  
Surface Mount: 101-314-93S-R27-L14



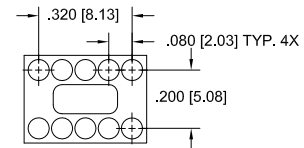
**Fig. 2**

Thru-Hole: C10-210-10-01-01S-R27-L14  
Surface Mount: C10-210-10-01-93S-R27-L14



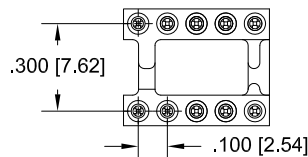
**Fig. 3**

Thru-Hole: 101-618-01S-R27-L14  
Surface Mount: 101-618-93S-R27-L14



**Fig. 4**

Thru-Hole: CSP200-10-01-01S-R27-L14  
Surface Mount: CSP200-10-01-93S-R27-L14

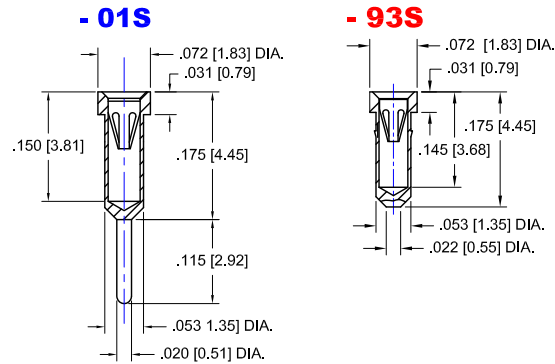


**Fig. 5**

Thru-Hole: 101-310-01S-R27-L14  
Surface Mount: 101-310-93S-R27-L14

## AVAGO TECHNOLOGIES AMERICAS SALES OFFICE *Continued*

### Socket Terminal Details Cross Section View Shown Units: in [mm]



## Technical Information

### Material:

Insulator: Hi-Temp UL 94V-O  
Terminal: Brass, per ASTM-B16  
Contact: BeCu, Per ASTM-B194

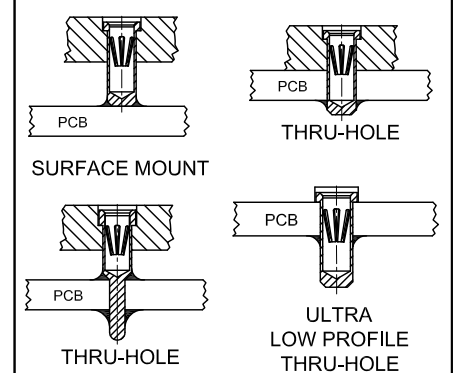
### Plating: RoHS COMPLIANT

R15 TERMINAL: GOLD / CONTACT: GOLD  
R17 TERMINAL: TIN / CONTACT: GOLD  
OTHER PLATINGS AVAILABLE

### Terminal Acceptance and Forces

Thru Hole Terminals				Surface Mount Terminals			
Thru Hole Terminal	Accepts Pin Diameter	Insertion Force	Withdrawal Force	Surface Mount Terminal	Accepts Pin Diameter	Insertion Force	Withdrawal Force
<b>-01S</b>	Ø.018 [Ø0.46]	9.0 oz Avg.	2.0 oz Min	<b>-93S</b>	Ø.018 [Ø0.46]	9.0 oz Avg.	2.0 oz Min

### MOUNTING OPTIONS



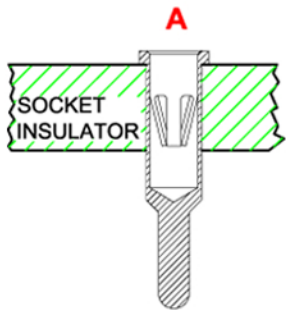
©Copyright 2016 Andon Electronics Corporation. All Rights Reserved. This material is protected under US and other copyrights and may not be copied, sold, or redistributed in any form without written permission of Andon Electronics Corporation. Copyrights and trademarks are property of their respective companies. We reserve the right to change specifications without notice. Andon makes no warranty, expressed or implied, as to the suitability of the sockets for the intended purpose.

**"ANDON PROPRIETARY INFORMATION"**  
**RoHS Compliant**

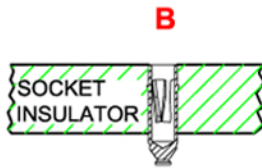
**ANDON ELECTRONICS CORPORATION**  
4 Court Drive, Lincoln RI 02865, United States of America

[www.andonelectronics.com](http://www.andonelectronics.com) or [www.andonelect.com](http://www.andonelect.com)  
Phone 401-333-0388 Fax 401-333-0287  
Email [Info@andonelect.com](mailto:Info@andonelect.com)

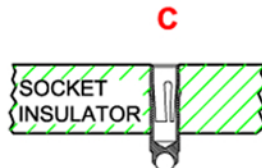
## Mounting Options



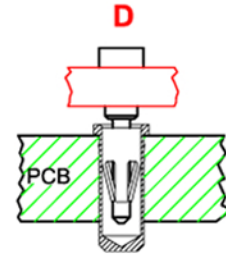
**THRU-HOLE**



**SMD-FLAT FOOT**



**ROLLERBALL**



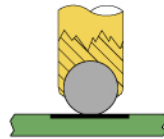
PCB FOR THRU-HOLE  
INSULATOR FOR SMD

**CARRIER  
WITH OR WITHOUT  
SOLDER  
WASHER**



**PIN SOCKET  
BULK  
WITH OR WITHOUT  
SOLDER  
WASHER**

**ROLLERBALL®  
SOCKET**



**BEFORE SOLDERING**

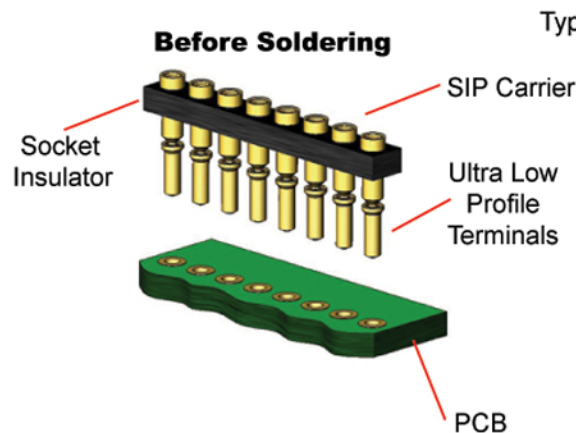
**ROLLERBALL®  
SOCKET**



**AFTER SOLDERING**

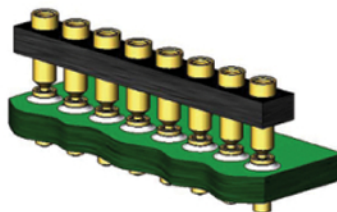
## ULTRA LOW PROFILE SIP/DIP/PGA CARRIER ASSEMBLY

**Before Soldering**

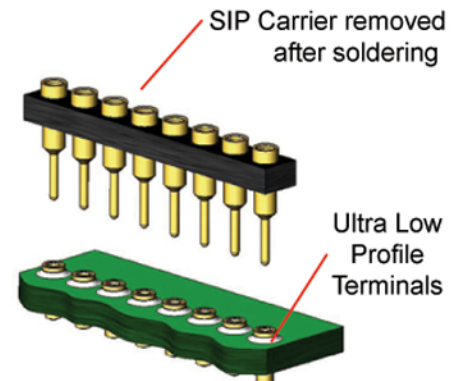


Type D

**During Soldering**



**After Soldering**



Available with or without solder washer