



RoHS Compliant
ISO 9001
Certified

CRYSTAL SOCKETS FOR



***Largest Line of High Reliability Sensor Sockets
with Andon's Unique Senstac™ Contact***

www.andonelect.com or www.andonelectronics.com
NETWORKS INTERNATIONAL CORPORATION is a Copyright © of 

NETWORKS INTERNATIONAL CORPORATION						
NETWORKS INTERNATIONAL CORPORATION Model Number	Andon Part Number Replace "XXX" with Terminal Type	Terminal Type		Pin Ø [in]	Figure Number	Page Number
		Thru-Hole	Surface Mount			
A-330	CSP1940-02-01-XXX-R27-L14	433E	285E	.040	1	1
A-226	CSP1940-02-01-XXX-R27-L14	433E	285E	.040	1	1
A-408	CSP1940-02-01-XXX-R27-L14	433E	285E	.040	1	1
A-727	CSP1940-02-01-XXX-R27-L14	433E	285E	.040	1	1
A-228	CSP1940-02-01-XXX-R27-L14	433E	285E	.040	1	1
A-634	CSP1940-02-01-XXX-R27-L14	433E	285E	.040	1	1
A-310	CSP1940-02-01-XXX-R27-L14	433E	285E	.040	1	1
A-241	CSP1940-02-01-XXX-R27-L14	433E	285E	.040	1	1
A-356	C10-318-04-02-XXX-R27-L14	295V	439V	.030	2	1
A-700	C10-318-04-02-XXX-R27-L14	295V	439V	.030	2	1
A-443	C10-318-04-02-XXX-R27-L14	295V	439V	.030	2	1
A-893	C10-318-04-02-XXX-R27-L14	295V	439V	.030	2	1
A-771	C10-318-04-02-XXX-R27-L14	295V	439V	.030	2	1
A-895	C10-318-04-02-XXX-R27-L14	295V	439V	.030	2	1
A-453	C10-318-04-02-XXX-R27-L14	295V	439V	.030	2	1
A-996	C10-318-04-02-XXX-R27-L14	295V	439V	.030	2	1
A-902	C10-318-04-02-XXX-R27-L14	295V	439V	.030	2	1
A-930	C10-318-04-02-XXX-R27-L14	295V	439V	.030	2	1
A-944	C10-318-04-02-XXX-R27-L14	295V	439V	0.03	2	1
A-571	C10-318-04-02-XXX-R27-L14	295V	439V	0.03	2	1

See last page for other mounting types including low profile options.
Heat sink socket available to reduce heat and noise. Contact Andon for details.

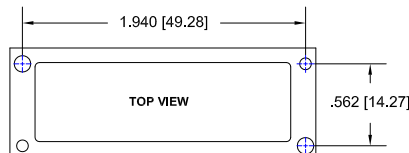


FIG.1

Thru-Hole: CSP1940-02-01-433E-R27-L14
Surface Mount: CSP1940-02-01-285E-R27-L14

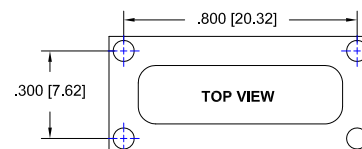


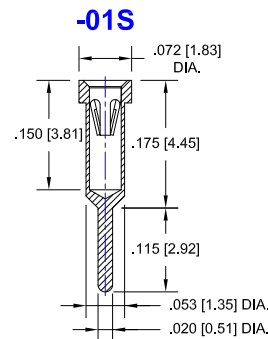
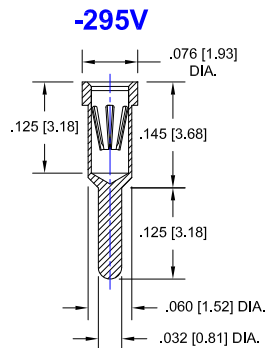
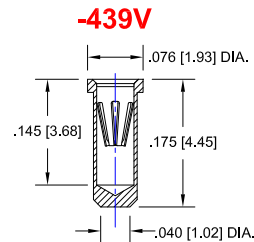
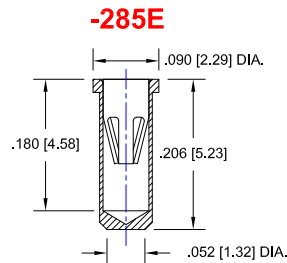
FIG.2

Thru-Hole: C10-318-04-02-295V-R27-L14
Surface Mount: C10-318-04-02-439V-R27-L14

NETWORKS INTERNATIONAL CORPORATION *Continued*

Socket Terminal Details

Cross Section View Shown Units: in[mm]



Technical Information

Material:

Insulator: Hi-Temp UL 94V-O
Terminal: Brass, per ASTM-B16
Contact: BeCu, Per ASTM-B194

Plating: RoHS COMPLIANT

R15 TERMINAL: GOLD / CONTACT: GOLD

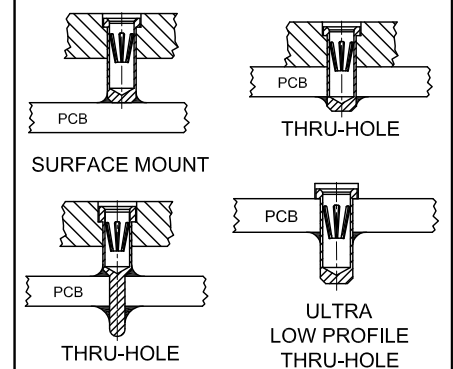
R17 TERMINAL: TIN / CONTACT: GOLD

OTHER PLATINGS AVAILABLE

Terminal Acceptance and Forces

Thru Hole Terminals				Surface Mount Terminals			
Thru Hole Terminal	Accepts Pin Diameter	Insertion Force	Withdrawal Force	Surface Mount Terminal	Accepts Pin Diameter	Insertion Force	Withdrawal Force
-433E	Ø.040 [Ø1.02]	36.0 oz Avg.	3.9 oz Min	-285E	Ø.040 [Ø1.52]	36.0 oz Avg.	3.9 oz Min
-295V	Ø.030 [Ø0.76]	13.2 oz Avg.	3.5 oz Min	-439V	Ø.030 [Ø0.76]	13.2 oz Avg.	3.5 oz Min

MOUNTING OPTIONS



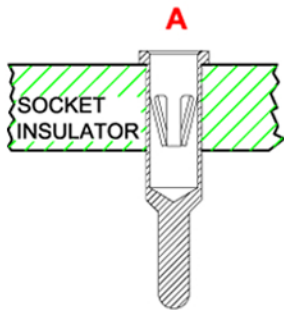
©Copyright 2016 Andon Electronics Corporation. All Rights Reserved. This material is protected under US and other copyrights and may not be copied, sold, or redistributed in any form without written permission of Andon Electronics Corporation. Copyrights and trademarks are property of their respective companies. We reserve the right to change specifications without notice. Andon makes no warranty, expressed or implied, as to the suitability of the sockets for the intended purpose.

*Sockets are not drawn to scale NETWORKS INTERNATIONAL CORPORATION 2/25/2016

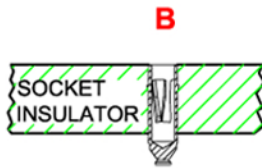
ANDON ELECTRONICS CORPORATION
4 Court Drive, Lincoln RI 02865, United States of America

www.andonelectronics.com or www.andonelect.com
Phone 401-333-0388 Fax 401-333-0287
Email Info@andonelect.com

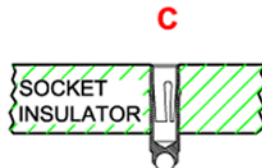
Mounting Options



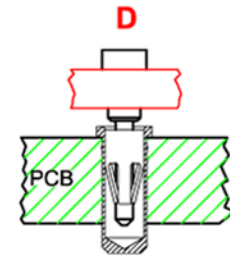
THRU-HOLE



SMD-FLAT FOOT



ROLLERBALL



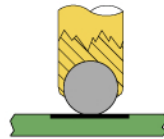
PCB FOR THRU-HOLE
INSULATOR FOR SMD

**CARRIER
WITH OR WITHOUT
SOLDER
WASHER**



**PIN SOCKET
BULK
WITH OR WITHOUT
SOLDER
WASHER**

**ROLLERBALL®
SOCKET**



BEFORE SOLDERING

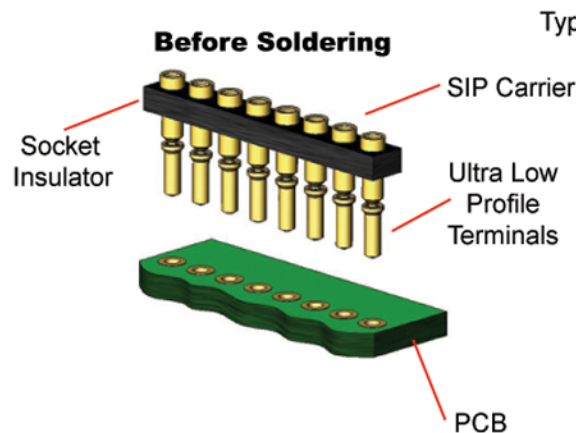
**ROLLERBALL®
SOCKET**



AFTER SOLDERING

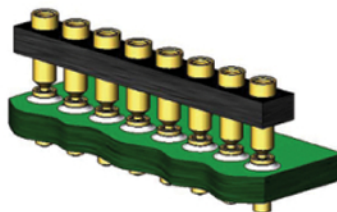
ULTRA LOW PROFILE SIP/DIP/PGA CARRIER ASSEMBLY

Before Soldering

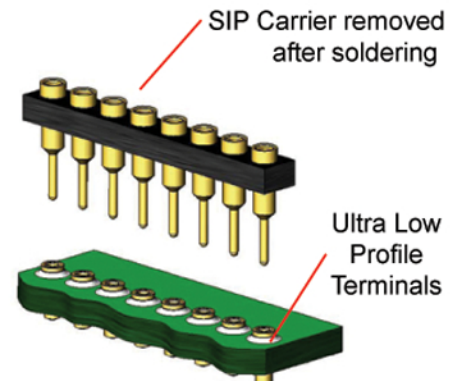


Type D

During Soldering



After Soldering



Available with or without solder washer