

IQD FREQUENCY PRODUCTS LTD.						
IQD FREQUENCY PRODUCTS LTD. Model Number	Andon Part Number Replace "XXX" with Terminal Type	Terminal Type		Pin Ø [in]	Figure Number	Page Number
		Thru-Hole	Surface Mount			
IQXF-1080	C10-422-05-01-XXX-R27-L14	01S	93S	.018	1	2
IQXF-1090	C10-422-05-01-XXX-R27-L14	01S	93S	.018	1	2
IQXF-1000	C10-1210-04-01-XXX-R27-L14	295V	439V	.030	7	3
IQXF-1050	C10-1210-04-01-XXX-R27-L14	295V	439V	.030	7	3
IQXF-1060	C10-1210-04-01-XXX-R27-L14	295V	439V	.030	7	3
IQXF-1070	C10-1210-04-01-XXX-R27-L14	295V	439V	.030	7	3
IQXF-1110	C10-1210-04-01-XXX-R27-L14	295V	439V	.030	7	3
IQXF-1010	C10-708-04-01-XXX-R27-L14	295V	439V	.030	5	3
IQXF-1020	C075-03-03-01-XXX-R27-L14	400T4	414T4	.012	11	3
LHTAT	CSP192-04-01-XXX-R27-L14	01S	93S	.018	6	3
IQXT-140 12V	C10-1014-05-02-XXX-R27-L14	295V	439V	.030	3	2
IQXT-140 5V	C10-1014-05-02-XXX-R27-L14	295V	439V	.030	3	2
IQXT-140 3.3V	C10-1014-05-02-XXX-R27-L14	295V	439V	.030	3	2
QC6107	C10-314-04-01-XXX-R27-L14	01S	93S	.018	2	2
QC6108	C10-314-04-01-XXX-R27-L14	01S	93S	.018	2	2
IQXO-820	C10-314-04-01-XXX-R27-L14	01S	93S	.018	2	2
IQXO-821	C10-314-04-01-XXX-R27-L14	01S	93S	.018	2	2
IQXO-822	C10-314-04-01-XXX-R27-L14	01S	93S	.018	2	2
IQXT-120 3.3V	C10-314-04-01-XXX-R27-L14	01S	93S	.018	2	2
IQXT-120 5V	C10-314-04-01-XXX-R27-L14	01S	93S	.018	2	2
CFDD-149	C10-314-04-01-XXX-R27-L14	01S	93S	.018	2	2
IQXO-415	C10-314-04-01-XXX-R27-L14	01S	93S	.018	2	2
IQXO-365	C10-314-04-01-XXX-R27-L14	01S	93S	.018	2	2
IQXO-366	C10-314-04-01-XXX-R27-L14	01S	93S	.018	2	2
IQXO-331	C10-314-04-01-XXX-R27-L14	01S	93S	.018	2	2
IQXO-336	C10-314-04-01-XXX-R27-L14	01S	93S	.018	2	2
CFPP-307	C10-314-04-01-XXX-R27-L14	01S	93S	.018	2	2
IQXO-366	C10-314-04-01-XXX-R27-L14	01S	93S	.018	2	2
IQXO-365	C10-314-04-01-XXX-R27-L14	01S	93S	.018	2	2
IQXO-415	C10-314-04-01-XXX-R27-L14	01S	93S	.018	2	2
IQXO-625	C10-314-04-01-XXX-R27-L14	01S	93S	.018	2	2
IQXO-626	C10-314-04-01-XXX-R27-L14	01S	93S	.018	2	2
IQXO-627	C10-314-04-01-XXX-R27-L14	01S	93S	.018	2	2
IQXO-628	C10-314-04-01-XXX-R27-L14	01S	93S	.018	2	2
IQOV-10	C10-314-04-01-XXX-R27-L14	01S	93S	.018	2	2
IQOV-11	C10-314-04-01-XXX-R27-L14	01S	93S	.018	2	2
IQOV-12	C10-314-04-01-XXX-R27-L14	01S	93S	.018	2	2
IQOV-13	C10-314-04-01-XXX-R27-L14	01S	93S	.018	2	2
IQOV-130	C10-314-04-01-XXX-R27-L14	01S	93S	.018	2	2
IQOV-131	C10-314-04-01-XXX-R27-L14	01S	93S	.018	2	2
IQOV-132	C10-314-04-01-XXX-R27-L14	01S	93S	.018	2	2
IQOV-133	C10-314-04-01-XXX-R27-L14	01S	93S	.018	2	2
IQOV-160	C10-314-04-01-XXX-R27-L14	01S	93S	.018	2	2
IQOV-200	C10-1014-05-02-XXX-R27-L14	295V	439V	.030	3	2
IQOV-70 12V	C10-1014-05-02-XXX-R27-L14	295V	439V	.030	3	2
IQOV-70 5V	C10-1014-05-02-XXX-R27-L14	295V	439V	.030	3	2
IQOV-70 3.3V	C10-1014-05-02-XXX-R27-L14	295V	439V	.030	3	2
IQOV-200F	C10-1014-05-02-XXX-R27-L14	295V	439V	.030	3	2
IQOV-60 5V	C10-7524-05-01-XXX-R27-L14	295V	439V	.030	4	2
IQOV-60 3.3V	C10-7524-05-01-XXX-R27-L14	295V	439V	.030	4	2
IQOV-10	C10-314-04-01-XXX-R27-L14	01S	93S	.018	2	2
IQOV-11	C10-314-04-01-XXX-R27-L14	01S	93S	.018	2	2
IQOV-12	C10-314-04-01-XXX-R27-L14	01S	93S	.018	2	2
IQOV-13	C10-314-04-01-XXX-R27-L14	01S	93S	.018	2	2
IQOV-131	C10-314-04-01-XXX-R27-L14	01S	93S	.018	2	2
IQOV-132	C10-314-04-01-XXX-R27-L14	01S	93S	.018	2	2
IQOV-133	C10-314-04-01-XXX-R27-L14	01S	93S	.018	2	2
IQOV-160	C10-314-04-01-XXX-R27-L14	01S	93S	.018	2	2

IQD FREQUENCY PRODUCTS LTD.						
IQD FREQUENCY PRODUCTS LTD. Model Number	Andon Part Number Replace "XXX" with Terminal Type	Terminal Type		Pin Ø [in]	Figure Number	Page Number
		Thru-Hole	Surface Mount			
IQOV-50 3.3V	C10-614-05-01-XXX-R27-L14	01S	93S	.018	9	3
IQOV-50 5V	C10-614-05-01-XXX-R27-L14	01S	93S	.018	9	3
IXXT-130 3.3V	C10-614-05-01-XXX-R27-L14	01S	93S	.018	9	3
IXXT-130 5V	C10-614-05-01-XXX-R27-L14	01S	93S	.018	9	3
IQOV-20	C10-716-05-01-XXX-R27-L14	295V	439V	.030	8	3
IQOV-200	C10-716-05-01-XXX-R27-L14	295V	439V	.030	8	3
IQOV-21	C10-716-05-01-XXX-R27-L14	295V	439V	.030	8	3
IQOV-22	C10-716-05-01-XXX-R27-L14	295V	439V	.030	8	3
IQOV-24	C10-716-05-01-XXX-R27-L14	295V	439V	.030	8	3
IQOV-25	C10-716-05-01-XXX-R27-L14	295V	439V	.030	8	3
IQOV-26	C10-716-05-01-XXX-R27-L14	295V	439V	.030	8	3
IQOV-60 3.3V	C10-7524-05-01-XXX-R27-L14	295V	439V	.030	4	2
IQOV-60 5V	C10-7524-05-01-XXX-R27-L14	295V	439V	.030	4	2
IXXO-828	C10-308-04-02-XXX-R27-L14	01S	93S	.018	10	3
IXXO-85	C10-308-04-02-XXX-R27-L14	01S	93S	.018	10	3
IXXO-86	C10-308-04-02-XXX-R27-L14	01S	93S	.018	10	3
IXXO-87	C10-308-04-02-XXX-R27-L14	01S	93S	.018	10	3
IXXO-88	C10-308-04-02-XXX-R27-L14	01S	93S	.018	10	3
CFPP-23	C10-308-04-02-XXX-R27-L14	01S	93S	.018	10	3
IXXO-35	C10-308-04-02-XXX-R27-L14	01S	93S	.018	10	3
IXXO-36	C10-308-04-02-XXX-R27-L14	01S	93S	.018	10	3
IXXO-823	C10-308-04-02-XXX-R27-L14	01S	93S	.018	10	3
IXXO-825	C10-308-04-02-XXX-R27-L14	01S	93S	.018	10	3
IXXO-26	C10-308-04-02-XXX-R27-L14	01S	93S	.018	10	3

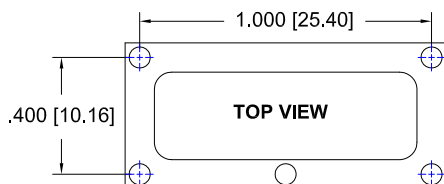


FIG 1

Thru-Hole: C10-422-05-01-01S-R27-L14
Surface Mount: C10-422-05-01-93S-R27-L14

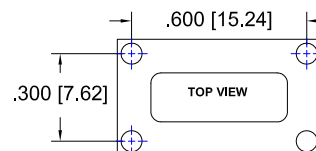


FIG 2

Thru-Hole: C10-314-04-01-01S-R27-L14
Surface Mount: C10-314-04-01-93S-R27-L14

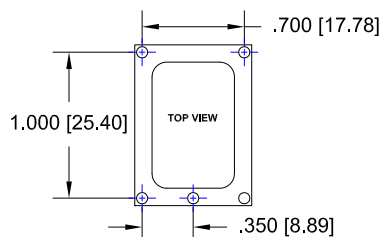


FIG 3

Thru-Hole: C10-1014-05-02-295V-R27-L14
Surface Mount: C10-1014-05-02-439V-R27-L14

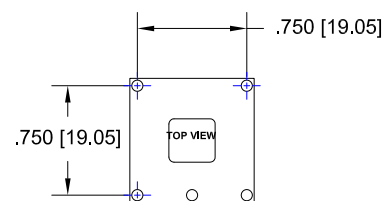


FIG 4

Thru-Hole: C10-7524-05-01-01S-R27-L14
Surface Mount: C10-7524-05-01-93S-R27-L14

IQD FREQUENCY PRODUCTS LTD. *Continued*

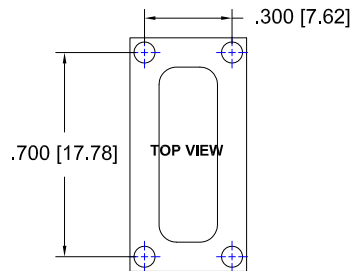


FIG: 5

Thru-Hole: C10-708-04-01-**295V**-R27-L14
Surface Mount: C10-708-04-01-**439V**-R27-L14

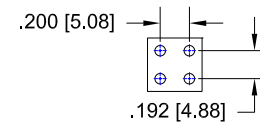


FIG: 6

Thru-Hole: CSP192-04-01-**01S**-R27-L14
Surface Mount: CSP192-04-01-**93S**-R27-L14

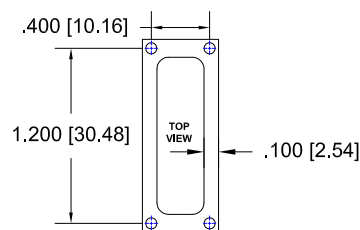


FIG: 7

Thru-Hole: C10-1210-04-01-**295V**-R27-L14
Surface Mount: C10-1210-04-01-**439V**-R27-L14

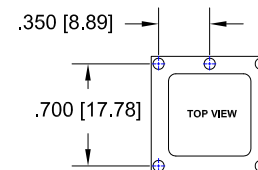


FIG: 8

Thru-Hole: C10-716-05-01-**295V**-R27-L14
Surface Mount: C10-716-05-01-**439V**-R27-L14

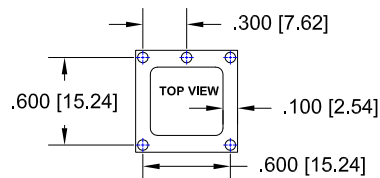


FIG: 9

Thru-Hole: C10-614-05-01-**01S**-R27-L14
Surface Mount: C10-614-05-01-**93S**-R27-L14

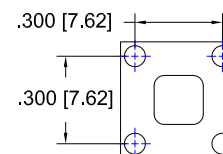


FIG: 10

Thru-Hole: C10-308-04-02-**01S**-R27-L14
Surface Mount: C10-308-04-02-**93S**-R27-L14

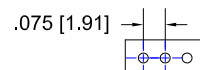
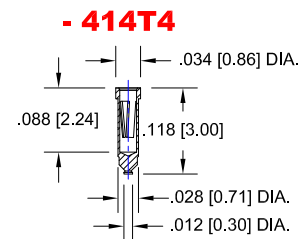
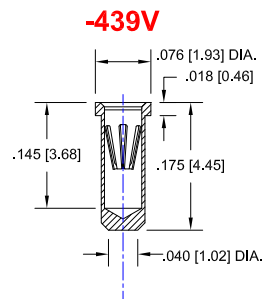
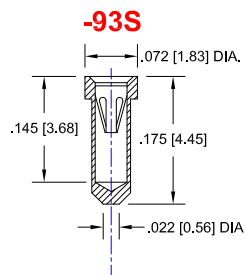
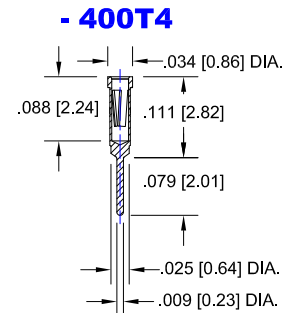
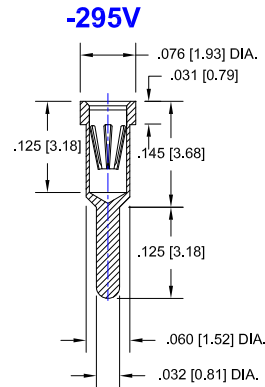
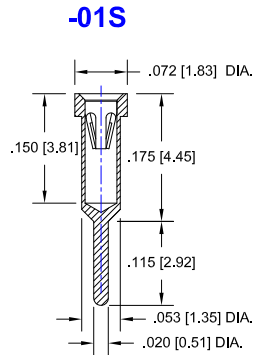


FIG: 11

Thru-Hole: C075-03-03-01-**400T4**-R27-L14
Surface Mount: C075-03-03-01-**414T4**-R27-L14

IQD FREQUENCY PRODUCTS LTD. *Continued*

Socket Terminal Details Cross Section View Shown Units: in [mm]



Technical Information

Material:

Insulator: Hi-Temp UL 94V-O
Terminal: Brass, per ASTM-B16
Contact: BeCu, Per ASTM-B194

Plating: RoHS COMPLIANT

R27 TERMINAL: GOLD / CONTACT: GOLD

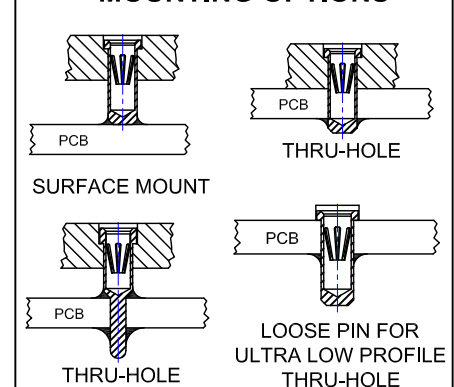
R17 TERMINAL: TIN / CONTACT: GOLD

OTHER PLATINGS AVAILABLE

Terminal Acceptance and Forces

Thru Hole Terminals				Surface Mount Terminals			
Thru Hole Terminal	Accepts Pin Diameter	Insertion Force	Withdrawal Force	Surface Mount Terminal	Accepts Pin Diameter	Insertion Force	Withdrawal Force
-01S	Ø.018 [Ø0.46]	9.0 oz Avg.	2.0 oz Min	-93S	Ø.018 [Ø0.46]	9.0 oz Avg.	2.0 oz Min
-295V	Ø.030 [Ø0.76]	13.2 oz Avg.	3.5 oz Min	-439V	Ø.030 [Ø0.76]	13.2 oz Avg.	3.5 oz Min
-400T4	Ø.012 [Ø0.30]	1.1 oz Avg.	0.3 oz Min	-414T4	Ø.012 [Ø0.30]	1.1 oz Avg.	0.3 oz Min

MOUNTING OPTIONS



"ANDON PROPRIETARY INFORMATION"

RoHS Compliant

©Copyright 2015 Andon Electronics Corporation. All Rights Reserved. This material is protected under US and other copyrights and may not be copied, sold, or redistributed in any form without written permission of Andon Electronics Corporation. Copyrights and trademarks are property of their respective companies. We reserve the right to change specifications without notice. Andon makes no warranty, expressed or implied, as to the suitability of the sockets for the intended purpose.

*Sockets are not drawn to scale IQD FREQUENCY PRODUCTS 03/19/2015

ANDON ELECTRONICS CORPORATION
4 Court Drive, Lincoln RI 02865, United States of America

www.andonelectronics.com or www.andonelect.com

Phone 401-333-0388 Fax 401-333-0287

Email Info@andonelect.com