



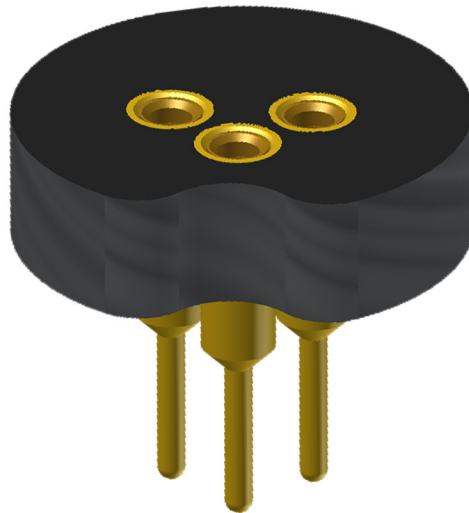
**ANDON**  
INTERCONNECTION SPECIALISTS



RoHS Compliant  
ISO 9001  
Certified

**HIGH RELIABILITY  
OPTOELECTRONIC SOCKETS FOR  
SONY**

**SONY**



***Featuring Andon's Unique Senstac™ Contact***

SONY is a trade mark of SONY

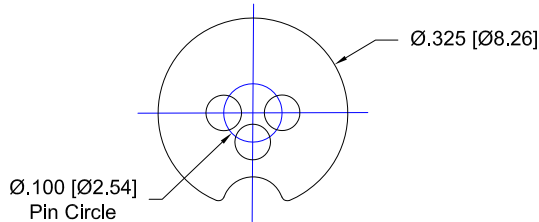
SONY						
Model Number	Andon Part Number Replace "XXX" with Terminal Type	Terminal Type		Pin Ø [in]	Figure Number	Page Number
		Thru-Hole	Surface Mount			
M-248 (LO-11)	R100-0403-04N-XXX-R27-L14	75S	265S	.018	1	2
M-273(LO-10)	C10-008-08-01-559E-R27-L14	-	-	.040	4	2
M-288	C10-010-09-01-559E-R27-L14	-	-	.040	3	2
M-S042	R080-0403-01N-XXX-R27-L14	274K	281K	.018	2	2
SLD1332V	R100-0403-04N-XXX-R27-L14	75S	265S	.018	1	2
SLD201V	R100-0403-04N-XXX-R27-L14	75S	265S	.018	1	2
SLD201V-3	R100-0403-04N-XXX-R27-L14	75S	265S	.018	1	2
SLD202V	R100-0403-04N-XXX-R27-L14	75S	265S	.018	1	2
SLD202V-3	R100-0403-04N-XXX-R27-L14	75S	265S	.018	1	2
SLD22V-1	R100-0403-04N-XXX-R27-L14	75S	265S	.018	1	2
SLD301V	R100-0403-04N-XXX-R27-L14	75S	265S	.018	1	2
SLD301V-1	R100-0403-04N-XXX-R27-L14	75S	265S	.018	1	2
SLD301V-2	R100-0403-04N-XXX-R27-L14	75S	265S	.018	1	2
SLD301V-3	R100-0403-04N-XXX-R27-L14	75S	265S	.018	1	2
SLD302V-1	R100-0403-04N-XXX-R27-L14	75S	265S	.018	1	2
SLD302V-2	R100-0403-04N-XXX-R27-L14	75S	265S	.018	1	2
SLD322V-2	R100-0403-04N-XXX-R27-L14	75S	265S	.018	1	2
SLD322V-24	R100-0403-04N-XXX-R27-L14	75S	265S	.018	1	2
SLD322V-25	R100-0403-04N-XXX-R27-L14	75S	265S	.018	1	2
SLD322V-3	R100-0403-04N-XXX-R27-L14	75S	265S	.018	1	2
SLD322V-52	R100-0403-04N-XXX-R27-L14	75S	265S	.018	1	2
SLD322XT-24	C10-008-08-01-559E-R27-L14	-	-	.040	4	2
SLD323V-1	R100-0403-04N-XXX-R27-L14	75S	265S	.018	1	2
SLD323V-2	R100-0403-04N-XXX-R27-L14	75S	265S	.018	1	2
SLD323V-24	R100-0403-04N-XXX-R27-L14	75S	265S	.018	1	2
SLD323V-25	R100-0403-04N-XXX-R27-L14	75S	265S	.018	1	2
SLD323V-3	R100-0403-04N-XXX-R27-L14	75S	265S	.018	1	2
SLD326YT-21	C10-010-09-01-559E-R27-L14	-	-	.040	3	2
SLD326YT-24	C10-010-09-01-559E-R27-L14	-	-	.040	3	2
SLD326YT-25	C10-010-09-01-559E-R27-L14	-	-	.040	3	2
SLD333V	R100-0403-04N-XXX-R27-L14	75S	265S	.018	1	2
SLD336VF	R080-0403-01N-XXX-R27-L14	274K	281K	.018	2	2
SLD344YT-52	C10-010-09-01-559E-R27-L14	-	-	.040	3	2

See last page for other mounting types including low profile options.  
Heat sink socket available to reduce heat and noise. Contact Andon for details.

## SONY Continued

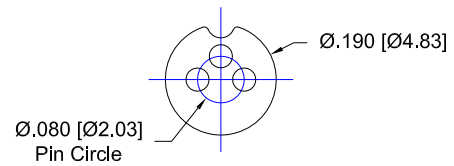
### Top View Shown

Units: in [mm]



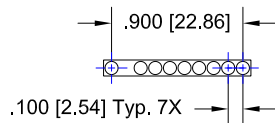
**FIG. 1**

Thru-Hole: R100-0403-04N-**75S**-R27-L14  
Surface Mount: R100-0403-04N-**265S**-R27-L14



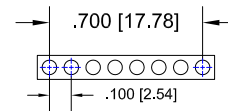
**FIG. 2**

Thru-Hole: R080-0403-01N-**274K**-R27-L14  
Surface Mount: R080-0403-01N-**281K**-R27-L14



**FIG. 3**

**SOLDER CUP:** C10-010-09-01-**559E**-R27-L14



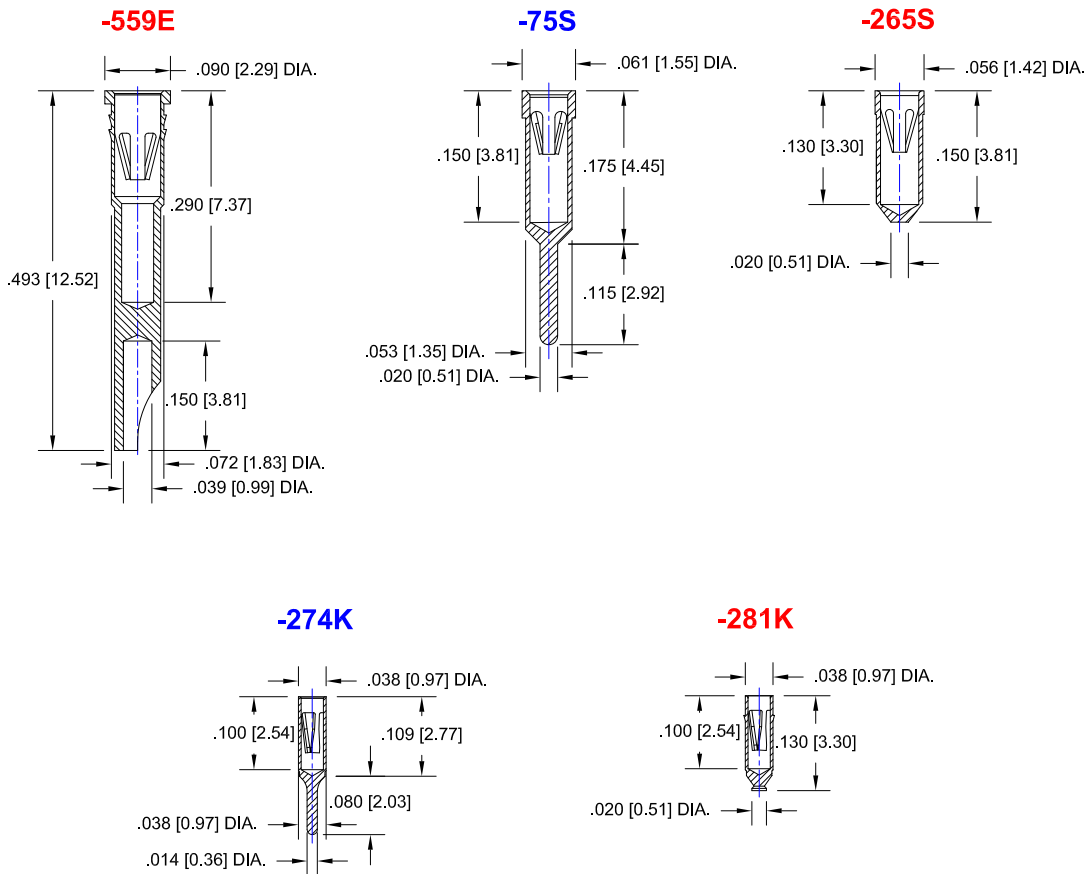
**FIG. 4**

**SOLDER CUP:** C10-008-08-01-**559E**-R27-L14

## SONY Continued

### Socket Terminal Details

Cross Section View Shown Units: in [mm]



## Technical Information

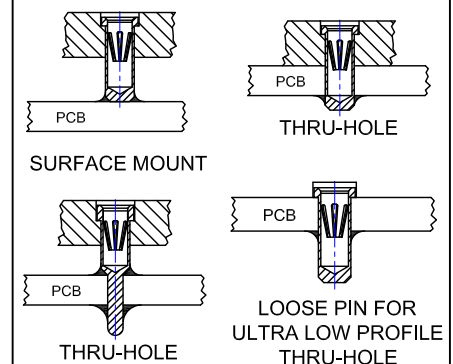
### Material:

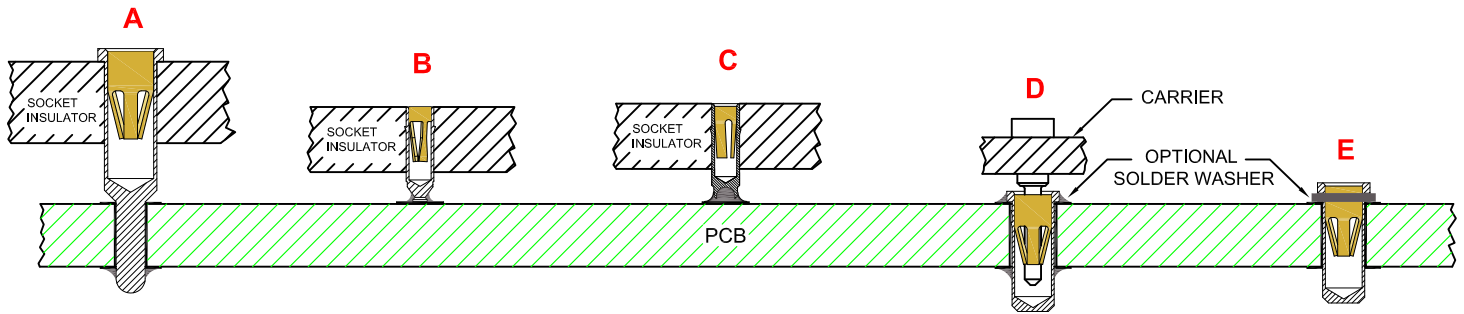
Insulator: Hi-Temp UL 94V-O  
Terminal: Brass, per ASTM-B16  
Contact: BeCu, Per ASTM-B194

**Plating: RoHS COMPLIANT**  
**R27 TERMINAL: GOLD / CONTACT: GOLD**  
**OTHER PLATINGS AVAILABLE**

Terminal Acceptance and Forces							
Thru Hole Terminals				Surface Mount Terminals			
Thru Hole Terminal	Accepts Pin Diameter	Insertion Force	Withdrawal Force	Surface Mount Terminal	Accepts Pin Diameter	Insertion Force	Withdrawal Force
-75S	Ø.018 [Ø0.46]	9.0 oz Avg.	2.0 oz Min	-265S	Ø.018 [Ø0.46]	9.0 oz Avg.	2.0 oz Min
-274K	Ø.018 [Ø0.46]	1.0 oz Avg.	0.5 oz Min	-281K	Ø.018 [Ø0.46]	1.0 oz Avg.	0.5 oz Min
-559E	Ø.040 [Ø1.02]	36.0 oz Avg.	3.9 oz Min	-N/A	-	-	-

### MOUNTING OPTIONS





**THRU-HOLE  
SOCKET**

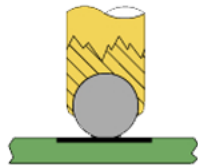
**SMD-SOCKET**

**SMD  
ROLLERBALL®  
SOCKET  
(PATENTED)**

**REMOVABLE  
CARRIER  
WITH ULTRA-LOW  
PROFILE PIN SOCKETS**

**INDIVIDUAL  
ULTRA-LOW PROFILE  
PIN SOCKETS  
(BEFORE SOLDERING)**

**ROLLERBALL®  
SOCKET**



**BEFORE SOLDERING**

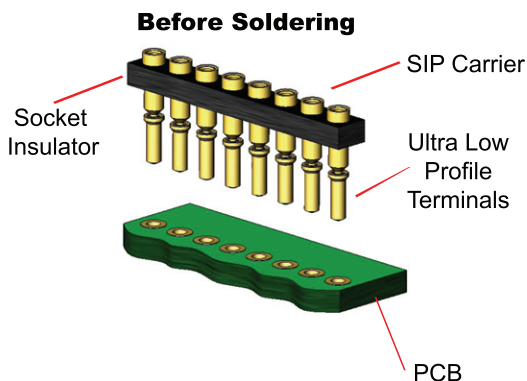
**ROLLERBALL®  
SOCKET**



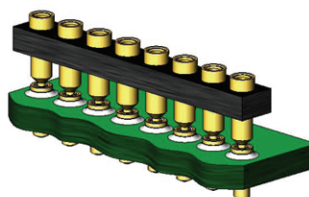
**AFTER SOLDERING**

**A more reliable solder joint for surface mount applications !**

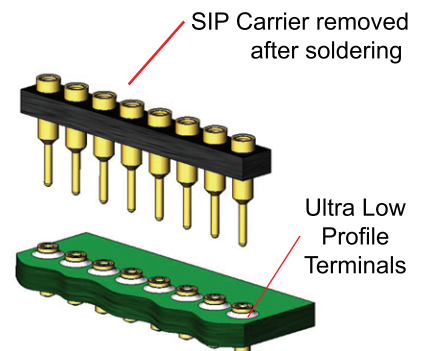
**ULTRA LOW PROFILE SIP/DIP/PGA CARRIER ASSEMBLY See 'D' above**



**During Soldering**



**After Soldering**



**Available with or without solder washer**