

SHEAUMANN LASER INC.						
SHEAUMANN LASER INC. Model Number	Andon Part Number Replace "XXX" with Terminal Type	Terminal Type		Pin Ø [in]	Figure Number	Page Number
		Thru-Hole	Surface Mount			
T21_WHP2_04B TO 9MM P-UP	R100-0403-04N-XXX-R27-L14	211S	265S	.018	1	1
M5-785-0080-S50	R100-0403-04N-XXX-R27-L14	211S	265S	.018	1	1
M9-785-0080-S50	R100-0403-04N-XXX-R27-L14	211S	265S	.018	1	1
M9-785-0150-S50	R100-0403-04N-XXX-R27-L14	211S	265S	.018	1	1
M9-830-0050-S50	R100-0403-04N-XXX-R27-L14	211S	265S	.018	1	1
M9-830-0150-S50	R100-0403-04N-XXX-R27-L14	211S	265S	.018	1	1
M9-830-0100-S50	R100-0403-04N-XXX-R27-L14	211S	265S	.018	1	1
M9-808-0100-S50	R100-0403-04N-XXX-R27-L14	211S	265S	.018	1	1
M9-808-0150-S50	R100-0403-04N-XXX-R27-L14	211S	265S	.018	1	1
M9-980-0300-S50	R100-0403-04N-XXX-R27-L14	211S	265S	.018	1	1
M9-980-0250-S50	R100-0403-04N-XXX-R27-L14	211S	265S	.018	1	1
M9-852-0150-S50	R100-0403-04N-XXX-R27-L14	211S	265S	.018	1	1
M9-852-0100-S50	R100-0403-04N-XXX-R27-L14	211S	265S	.018	1	1
M9-A64-0350-S50	R100-0403-04N-XXX-R27-L14	211S	265S	.018	1	1
M9-A64-0200-S50	R100-0403-04N-XXX-R27-L14	211S	265S	.018	1	1
M9-A64-0300-S50	R100-0403-04N-XXX-R27-L14	211S	265S	.018	1	1
M9-940-0300-S50	R100-0403-04N-XXX-R27-L14	211S	265S	.018	1	1
M9-940-0100-S50	R100-0403-04N-XXX-R27-L14	211S	265S	.018	1	1
M9-940-0200-S50	R100-0403-04N-XXX-R27-L14	211S	265S	.018	1	1
M9-905-0100-S50	R100-0403-04N-XXX-R27-L14	211S	265S	.018	1	1
M9-915-0200-S50	R100-0403-04N-XXX-R27-L14	211S	265S	.018	1	1
M9-915-0300-S50	R100-0403-04N-XXX-R27-L14	211S	265S	.018	1	1
M5-905-0100-S50	R100-0403-04N-XXX-R27-L14	211S	265S	.018	1	1
BF-830-0100-S50	C10-007-07-01-XXX-R27-L14	556S	-	.018	2	1
BF-915-0180-P50	C10-007-07-01-XXX-R27-L14	556S	-	.018	2	1
BF-940-0200-P50	C10-007-07-01-XXX-R27-L14	556S	-	.018	2	1
BF-975-0180-PP0	C10-007-07-01-XXX-R27-L14	556S	-	.018	2	1
BF-975-0220-P50	C10-007-07-01-XXX-R27-L14	556S	-	.018	2	1
BH-979-0250-PP0	C10-007-07-01-XXX-R27-L14	556S	-	.018	2	1
BH-979-0300-P50	C10-007-07-01-XXX-R27-L14	556S	-	.018	2	1
BF-A64-0180-P50	C10-007-07-01-XXX-R27-L14	556S	-	.018	2	1

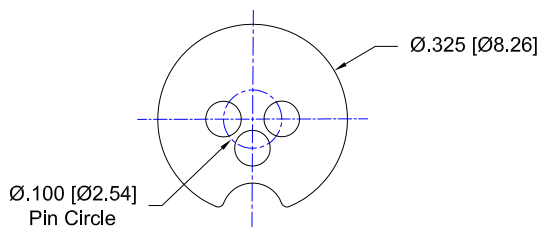


FIG: 1
Thru-Hole: R100-0403-04N-211S-R27-L14
Surface Mount: R100-0403-04N-265S-R27-L14

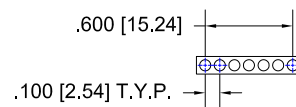


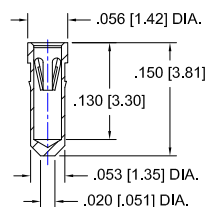
FIG: 2
SOLDER CUP: C10-007-07-01-556S-R27-L14

SHEAUMANN LASER INC. *Continued*

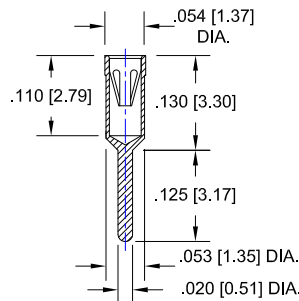
Top View Shown

Units: in [mm]

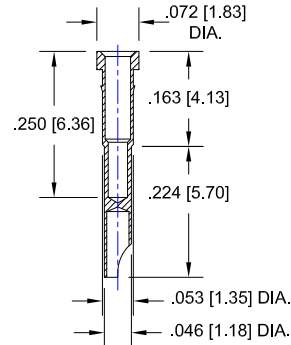
- 265S



-211S



-556S



Material:

Insulator: Hi-Temp UL 94V-0
Terminal: Brass, per ASTM-B16
Contact: BeCu, Per ASTM-B194

Plating: RoHS COMPLIANT

R15 TERMINAL: GOLD / CONTACT: GOLD

R17 TERMINAL: TIN / CONTACT: GOLD

OTHER PLATINGS AVAILABLE

Terminal Acceptance and Forces

Thru Hole Terminals				Surface Mount Terminals			
Thru Hole Terminal	Accepts Pin Diameter	Insertion Force	Withdrawal Force	Surface Mount Terminal	Accepts Pin Diameter	Insertion Force	Withdrawal Force
-556S	Ø.018 [Ø0.46]	9.0 oz Avg.	2.0 oz Min	N/A	-	-	-
-265S	Ø.018 [Ø0.46]	9.0 oz Avg.	2.0 oz Min	-211S	Ø.018 [Ø0.46]	9.0 oz Avg.	2.0 oz Min

MOUNTING OPTIONS

