



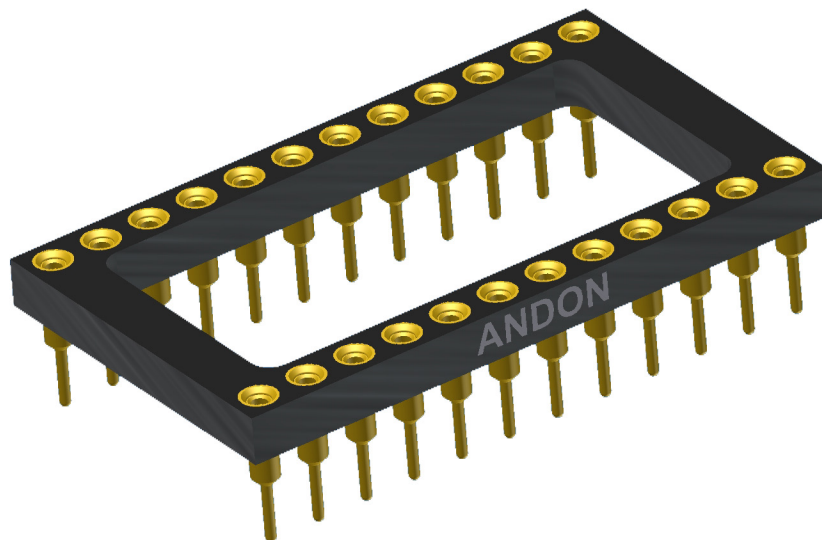
**ANDON**  
INTERCONNECTION SPECIALISTS



RoHS Compliant  
ISO 9001  
Certified

**HIGH RELIABILITY  
OPTOELECTRONIC SOCKETS FOR  
SENS-TECH LIMITED**

senstech

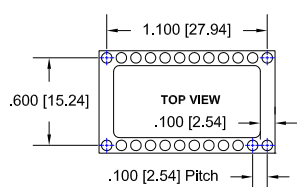


**Featuring Andon's Unique Senstac™ Contact**

SENS-TECH LIMITED is a trade mark of SENS-TECH LIMITED

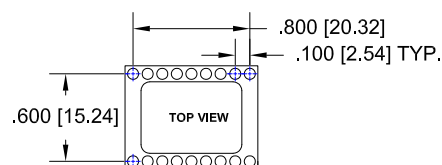
SENS-TECH LIMITED						
Model Number	Andon Part Number Replace "XXX" with Terminal Type	Terminal Type		Pin Ø [in]	Figure Number	Page Number
		Thru-Hole	Surface Mount			
2.5MM PITCH GADOX	C10-624-24-01-XXX-R27-L14	01S	93S	.018	1	1
2.5MM PITCH CSL	C10-624-24-01-XXX-R27-L14	01S	93S	.018	1	1
STANDARD FORMAT	C10-618-18-01-XXX-R27-L14	01S	93S	.018	2	1
NARROW FORMAT	C10-318-18-01-XXX-R27-L14	01S	93S	.018	3	1

See last page for other mounting types including low profile options.  
Heat sink socket available to reduce heat and noise. Contact Andon for details.



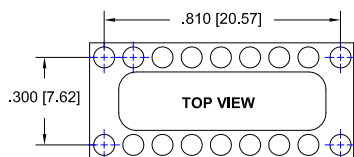
**FIG. 1**

Thru-Hole: C10-624-24-01-01S-R27-L14  
Surface Mount: C10-624-24-01-93S-R27-L14



**FIG. 2**

Thru-Hole: C10-618-18-01-01S-R27-L14  
Surface Mount: C10-618-18-01-93S-R27-L14



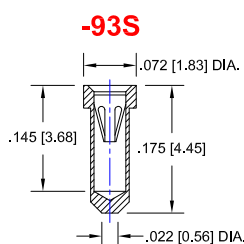
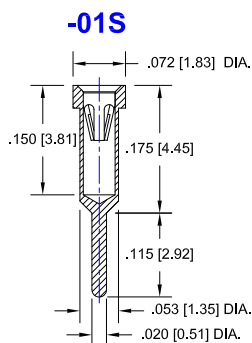
**FIG. 3**

Thru-Hole: C10-318-18-01-01S-R27-L14  
Surface Mount: C10-318-18-01-93S-R27-L14

## SENS-TECH LIMITED *Continued*

### Socket Terminal Details

Cross Section View Shown Units: in [mm]



## Technical Information

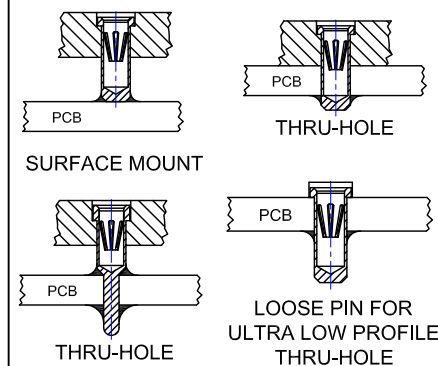
### Material:

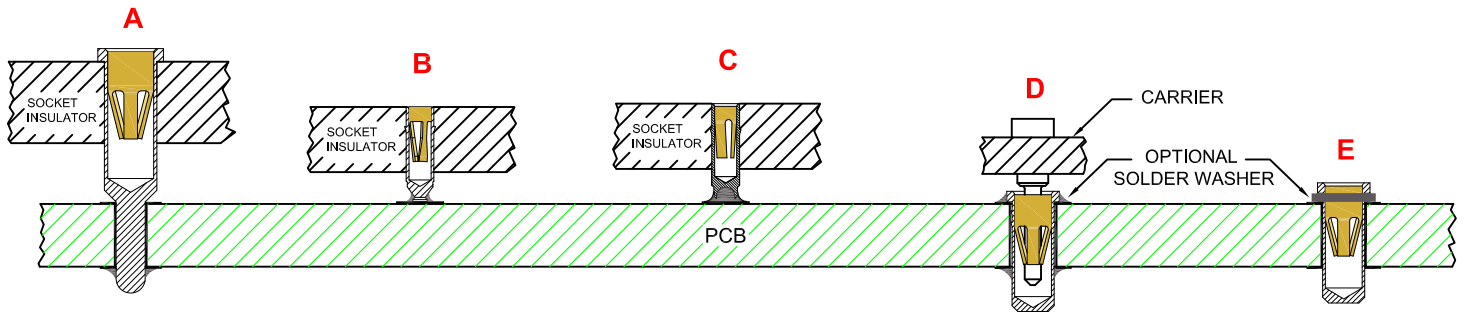
Insulator: Hi-Temp UL 94V-O  
Terminal: Brass, per ASTM-B16  
Contact: BeCu, Per ASTM-B194

**Plating: RoHS COMPLIANT**  
**R27 TERMINAL: GOLD / CONTACT: GOLD**  
**OTHER PLATINGS AVAILABLE**

Terminal Acceptance and Forces							
Thru Hole Terminals				Surface Mount Terminals			
Thru Hole Terminal	Accepts Pin Diameter	Insertion Force	Withdrawal Force	Surface Mount Terminal	Accepts Pin Diameter	Insertion Force	Withdrawal Force
<b>-01S</b>	Ø.018 [Ø0.46]	9.0 oz Avg.	2.0 oz Min	<b>-93S</b>	Ø.018 [Ø0.46]	9.0 oz Avg.	2.0 oz Min

### MOUNTING OPTIONS





**THRU-HOLE  
SOCKET**

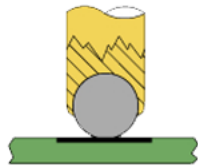
**SMD-SOCKET**

**SMD  
ROLLERBALL®  
SOCKET  
(PATENTED)**

**REMOVABLE  
CARRIER  
WITH ULTRA-LOW  
PROFILE PIN SOCKETS**

**INDIVIDUAL  
ULTRA-LOW PROFILE  
PIN SOCKETS  
(BEFORE SOLDERING)**

**ROLLERBALL®  
SOCKET**



**BEFORE SOLDERING**

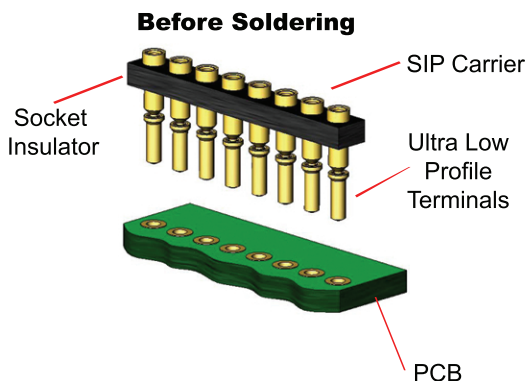
**ROLLERBALL®  
SOCKET**



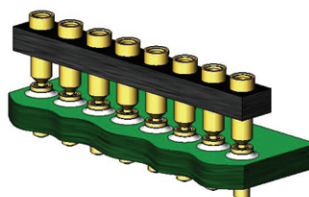
**AFTER SOLDERING**

**A more reliable solder joint for surface mount applications !**

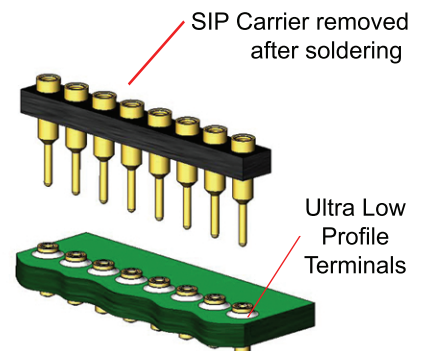
**ULTRA LOW PROFILE SIP/DIP/PGA CARRIER ASSEMBLY See 'D' above**



**During Soldering**



**After Soldering**



**Available with or without solder washer**