



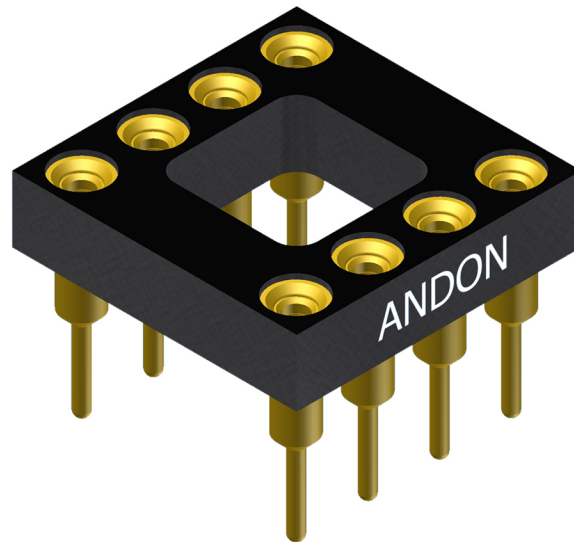
ANDON
INTERCONNECTION SPECIALISTS



RoHS Compliant
ISO 9001
Certified

**HIGH RELIABILITY
OPTOELECTRONIC SOCKETS FOR
RENESAS**

RENESAS



Featuring Andon's Unique Senstac™ Contact

RENESAS® is a trade mark of RENESAS

RENESAS						
RENESAS Model Number	Andon Part Number Replace "XXX" with Terminal Type	Terminal Type		Pin Ø [in]	Figure Number	Page Number
		Thru-Hole	Surface Mount			
NR8300FP-CC	R080-0403-01N-XXX-R27-L14	274K	281K	.018	9	3
NR8360JP-BC	C10-314-14-01-XXX-R27-L14	01S	93S	.018	6	3
NR8800FS-CB	R080-0403-01N-XXX-R27-L14	274K	281K	.018	9	3
NV4V31MF	R056-0403-01N-XXX-R27-L14	400T4	414T4	.012	8	3
NV4V31SF	R056-0403-01N-XXX-R27-L14	400T4	414T4	.012	8	3
NV4V41SF	R056-0403-01N-XXX-R27-L14	400T4	414T4	.012	8	3
NX6240GP	R080-0404-01N-XXX-R27-L14	274K	281K	.018	1	2
NX6308GH	R080-0404-01N-XXX-R27-L14	274K	281K	.018	1	2
NX6309GH	R080-0404-01N-XXX-R27-L14	274K	281K	.018	1	2
NX6314EH	R080-0404-01N-XXX-R27-L14	274K	281K	.018	1	2
NX6342EP	R080-0404-01N-XXX-R27-L14	274K	281K	.018	1	2
NX6350EP SERIES	R080-0404-01N-XXX-R27-L14	274K	281K	.018	1	2
NX6350GP SERIES	R080-0404-01N-XXX-R27-L14	274K	281K	.018	1	2
NX6351GP SERIES	R080-0404-01N-XXX-R27-L14	274K	281K	.018	1	2
NX6352GP SERIES	R080-0404-01N-XXX-R27-L14	274K	281K	.018	1	2
NX6353EP SERIES	R080-0404-01N-XXX-R27-L14	274K	281K	.018	1	2
NX6410GH	R080-0404-01N-XXX-R27-L14	274K	281K	.018	1	2
NX6411GH	R080-0404-01N-XXX-R27-L14	274K	281K	.018	1	2
NX6414EH	R080-0404-01N-XXX-R27-L14	274K	281K	.018	1	2
NX6511GH	R080-0404-01N-XXX-R27-L14	274K	281K	.018	1	2
NX6514EH	R080-0404-01N-XXX-R27-L14	274K	281K	.018	1	2
NX7335AN-AA	R080-0404-01N-XXX-R27-L14	274K	281K	.018	1	2
NX7338BF-AA	R080-0404-01N-XXX-R27-L14	274K	281K	.018	1	2
NX7339BB-AA	R080-0404-01N-XXX-R27-L14	274K	281K	.018	1	2
NX7437AG-AA	R080-0404-01N-XXX-R27-L14	274K	281K	.018	1	2
NX7537BF-AA	R080-0404-01N-XXX-R27-L14	274K	281K	.018	1	2
NX7539BB-AA	R080-0404-01N-XXX-R27-L14	274K	281K	.018	1	2
NX7563JB-BC	C10-314-14-01-XXX-R27-L14	01S	93S	.018	6	3
NX7637BF-AA	R080-0404-01N-XXX-R27-L14	274K	281K	.018	1	2
NX7639BB-AA	R080-0404-01N-XXX-R27-L14	274K	281K	.018	1	2
NX8315XC	R080-0404-01N-XXX-R27-L14	274K	281K	.018	1	2
NX8316XC	R080-0404-01N-XXX-R27-L14	274K	281K	.018	1	2
NX8601BF-AA	R080-0404-01N-XXX-R27-L14	274K	281K	.018	1	2
NX8602BF-AA	R080-0404-01N-XXX-R27-L14	274K	281K	.018	1	2
NX8663JB-BC	C10-314-14-01-XXX-R27-L14	01S	93S	.018	6	3
PS2502-1-DIP	C10-304-04-01-XXX-R27-L14	01S	93S	.018	2	2
PS2502-4-DIP	C10-316-16-01-XXX-R27-L14	01S	93S	.018	3	2
PS2503-1-DIP	C10-304-04-01-XXX-R27-L14	01S	93S	.018	2	2
PS2505-1-DIP	C10-304-04-01-XXX-R27-L14	01S	93S	.018	2	2
PS2505-4-DIP	C10-316-16-01-XXX-R27-L14	01S	93S	.018	3	2
PS2506-1-DIP	C10-304-04-01-XXX-R27-L14	01S	93S	.018	2	2
PS2513-1-DIP	C10-304-04-01-XXX-R27-L14	01S	93S	.018	2	2
PS2514-1-DIP	C10-304-04-01-XXX-R27-L14	01S	93S	.018	2	2
PS2535-1-DIP	C10-304-04-01-XXX-R27-L14	01S	93S	.018	2	2
PS2561-1-DIP	C10-304-04-01-XXX-R27-L14	01S	93S	.018	2	2
PS2561BL1-1-DIP	C10-404-04-01-XXX-R27-L14	01S	93S	.018	7	3
PS2561D-1-DIP	C10-304-04-01-XXX-R27-L14	01S	93S	.018	2	2
PS2561DL1-1-DIP	C10-404-04-01-XXX-R27-L14	01S	93S	.018	7	3
PS2561DL1-1-DIP	C10-404-04-01-XXX-R27-L14	01S	93S	.018	7	3
PS2562-1-DIP	C10-304-04-01-XXX-R27-L14	01S	93S	.018	2	2
PS2562L1-1-DIP	C10-404-04-01-XXX-R27-L14	01S	93S	.018	7	3
PS2565-1-DIP	C10-304-04-01-XXX-R27-L14	01S	93S	.018	2	2
PS2565L1-1-DIP	C10-404-04-01-XXX-R27-L14	01S	93S	.018	7	3
PS8501-DIP	C10-408-08-01-XXX-R27-L14	01S	93S	.018	5	3
PS8501L1-DIP	C10-408-08-01-XXX-R27-L14	01S	93S	.018	5	3

See last page for other mounting types including low profile options.
Heat sink socket available to reduce heat and noise. Contact Andon for details.

RENESAS						
RENESAS Model Number	Andon Part Number Replace "XXX" with Terminal Type	Terminal Type		Pin Ø [in]	Figure Number	Page Number
		Thru-Hole	Surface Mount			
PS8501L2-DIP	C10-408-08-01-XXX-R27-L14	01S	93S	.018	5	3
PS8501L3-DIP	C10-408-08-01-XXX-R27-L14	01S	93S	.018	5	3
PS8502-DIP	C10-408-08-01-XXX-R27-L14	01S	93S	.018	5	3
PS8502L1-DIP	C10-408-08-01-XXX-R27-L14	01S	93S	.018	5	3
PS8502L2-DIP	C10-408-08-01-XXX-R27-L14	01S	93S	.018	5	3
PS8502L3-DIP	C10-408-08-01-XXX-R27-L14	01S	93S	.018	5	3
PS9505-DIP	C10-408-08-01-XXX-R27-L14	01S	93S	.018	5	3
PS9505L1-DIP	C10-408-08-01-XXX-R27-L14	01S	93S	.018	5	3
PS9505L2-DIP	C10-408-08-01-XXX-R27-L14	01S	93S	.018	5	3
PS9505L3-DIP	C10-408-08-01-XXX-R27-L14	01S	93S	.018	5	3
PS9506-DIP	C10-308-08-01-XXX-R27-L14	01S	93S	.018	4	2
PS9506L1-DIP	C10-308-08-01-XXX-R27-L14	01S	93S	.018	4	2
PS9506L2-DIP	C10-308-08-01-XXX-R27-L14	01S	93S	.018	4	2
PS9506L3-DIP	C10-308-08-01-XXX-R27-L14	01S	93S	.018	4	2
PS9531-DIP	C10-408-08-01-XXX-R27-L14	01S	93S	.018	5	3
PS9531L1-DIP	C10-408-08-01-XXX-R27-L14	01S	93S	.018	5	3
PS9531L2-DIP	C10-408-08-01-XXX-R27-L14	01S	93S	.018	5	3
PS9531L3-DIP	C10-408-08-01-XXX-R27-L14	01S	93S	.018	5	3

See last page for other mounting types including low profile options.
Heat sink socket available to reduce heat and noise. Contact Andon for details.

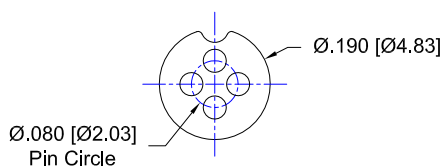


FIG. 1

Thru-Hole: R080-0404-01N-274K-R27-L14
Surface Mount: R080-0404-01N-281K-R27-L14

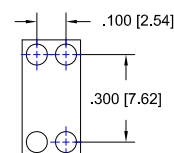


FIG. 2

Thru-Hole: C10-304-04-01-01S-R27-L14
Surface Mount: C10-304-04-01-93S-R27-L14

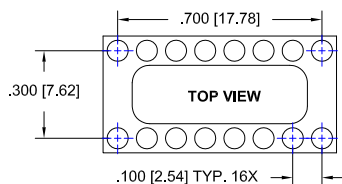


FIG. 3

Thru-Hole: C10-316-16-01-01S-R27-L14
Surface Mount: C10-316-16-01-93S-R27-L14

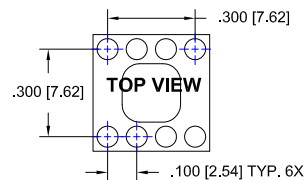


FIG. 4

Thru-Hole: C10-308-08-01-01S-R27-L14
Surface Mount: C10-308-08-01-93S-R27-L14

RENESAS *Continued*

Top View Shown
Units: in [mm]

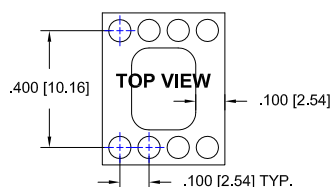


FIG. 5

Thru-Hole: C10-408-08-01-01S-R27-L14
Surface Mount: C10-408-08-01-93S-R27-L14

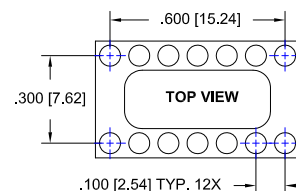


FIG. 6

Thru-Hole: C10-314-14-01-01S-R27-L14
Surface Mount: C10-314-14-01-93S-R27-L14

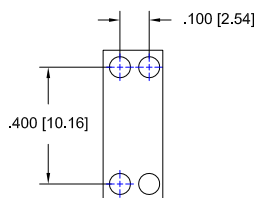


FIG. 7

Thru-Hole: C10-404-04-01-01S-R27-L14
Surface Mount: C10-404-04-01-93S-R27-L14

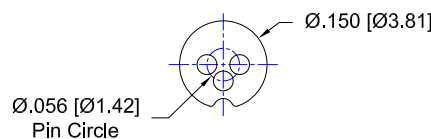


FIG. 8

Thru-Hole: R056-0403-01N-400T4-R27-L14
Surface Mount: R056-0403-01N-414T4-R27-L14

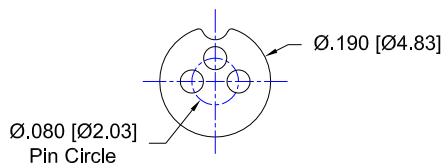
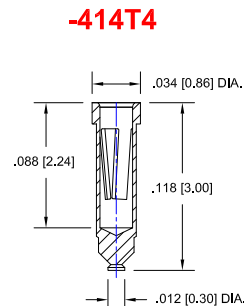
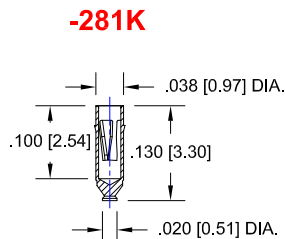
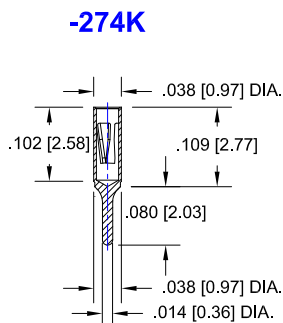
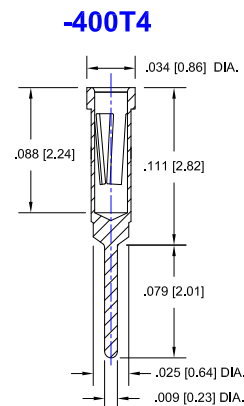
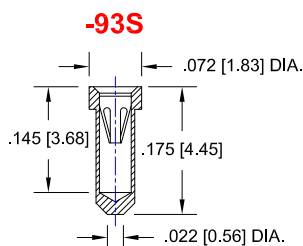
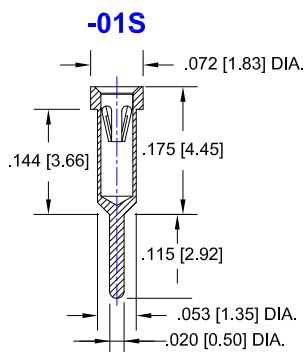


FIG. 9

Thru-Hole: R080-0403-01N-274K-R27-L14
Surface Mount: R080-0403-01N-281K-R27-L14

RENESAS *Continued* Socket Terminal Details Cross Section View Shown Units: in [mm]



Technical Information

Material:

Insulator: Hi-Temp UL 94V-O
Terminal: Brass, per ASTM-B16
Contact: BeCu, Per ASTM-B194

Plating: RoHS COMPLIANT

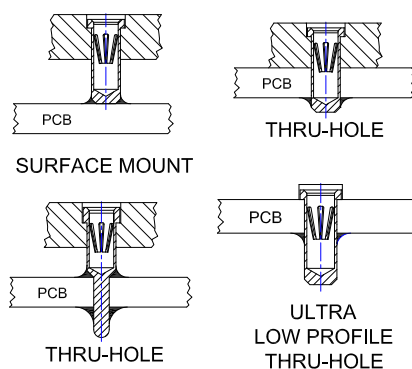
R17 TERMINAL: MATTE TIN / CONTACT: GOLD

R27 TERMINAL: GOLD / CONTACT: GOLD

R32 TERMINAL: MATTE TIN / CONTACT: TIN
OTHER PLATINGS AVAILABLE

Terminal Acceptance and Forces							
Thru Hole Terminals				Surface Mount Terminals			
Thru Hole Terminal	Accepts Pin Diameter	Insertion Force	Withdrawal Force	Surface Mount Terminal	Accepts Pin Diameter	Insertion Force	Withdrawal Force
-01S	Ø.018 [Ø0.46]	9.0 oz Max	2.0 oz Min	-93S	Ø.018 [Ø0.46]	9.0 oz Max	2.0 oz Min
-400T4	Ø.012 [Ø0.30]	1.1 oz Max	0.3 oz Min	-414T4	Ø.012 [Ø0.30]	1.1 oz Max	0.3 oz Min
-274K	Ø.018 [Ø0.46]	1.0 oz Max	0.5 oz Min	-281K	Ø.018 [Ø0.46]	1.0 oz Max	0.5 oz Min

MOUNTING OPTIONS



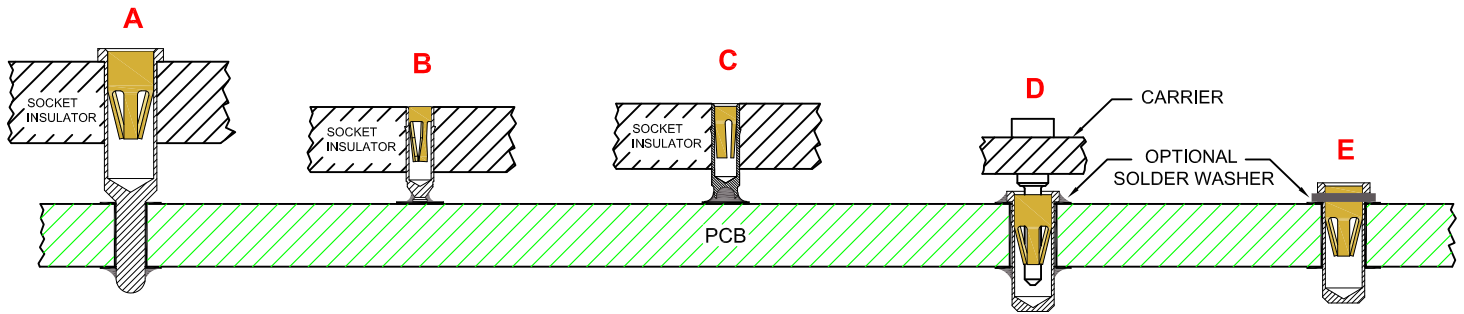
"ANDON PROPRIETARY INFORMATION"
RoHS Compliant

*Sockets are not drawn to scale RENESAS 4/6/2017

©Copyright 2017 Andon Electronics Corporation. All Rights Reserved. This material is protected under US and other copyrights and may not be copied, sold, or redistributed in any form without written permission of Andon Electronics Corporation. Copyrights and trademarks are property of their respective companies. We reserve the right to change specifications without notice. Andon makes no warranty, expressed or implied, as to the suitability of the sockets for the intended purpose.

ANDON ELECTRONICS CORPORATION
4 Court Drive, Lincoln RI 02865, United States of America

www.andonelectronics.com or www.andonelect.com
Phone 401-333-0388 Fax 401-333-0287
Email Info@andonelect.com



**THRU-HOLE
SOCKET**

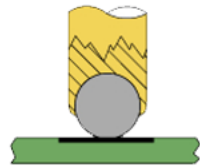
SMD-SOCKET

**SMD
ROLLERBALL®
SOCKET
(PATENTED)**

**REMOVABLE
CARRIER
WITH ULTRA-LOW
PROFILE PIN SOCKETS**

**INDIVIDUAL
ULTRA-LOW PROFILE
PIN SOCKETS
(BEFORE SOLDERING)**

**ROLLERBALL®
SOCKET**



BEFORE SOLDERING

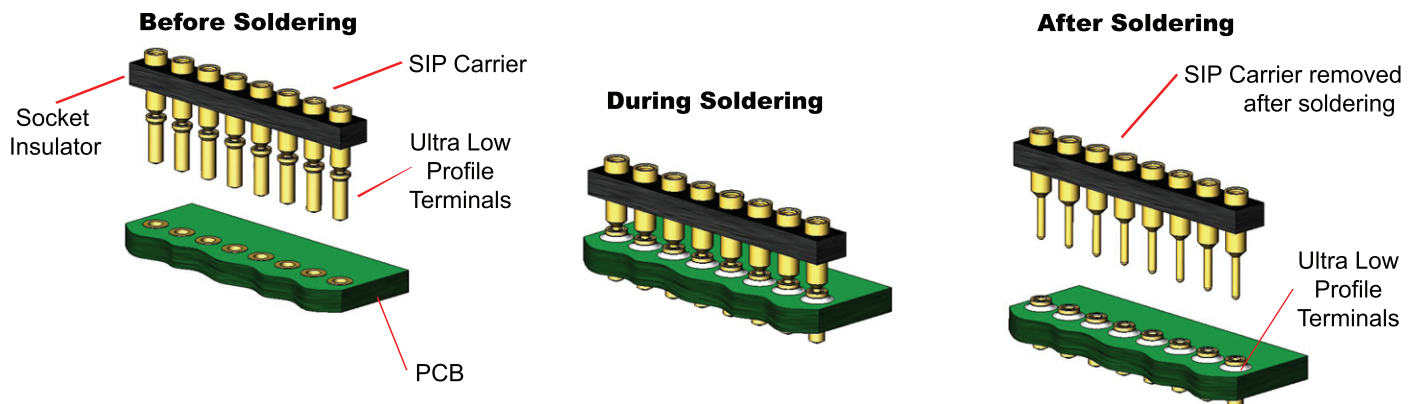
**ROLLERBALL®
SOCKET**



AFTER SOLDERING

A more reliable solder joint for surface mount applications !

ULTRA LOW PROFILE SIP/DIP/PGA CARRIER ASSEMBLY See 'D' above



Available with or without solder washer