



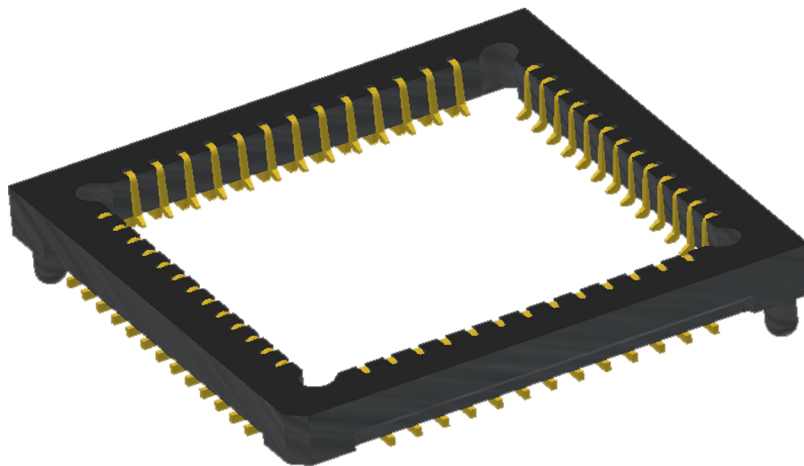
ANDON
INTERCONNECTION SPECIALISTS



RoHS Compliant
ISO 9001
Certified

HIGH RELIABILITY OPTOELECTRONIC SOCKETS FOR

PYREOS



Featuring Andon's Unique Senstac™ Contact

PYREOS LTD. is a trade mark of PYREOS LTD.

PYREOS LTD						
PYREOS LTD Model Number	Andon Part Number Replace "XXX" with Terminal Type	Terminal Type		Pin Ø [in]	Figure Number	Page Number
		Thru-Hole	Surface Mount			
PY-ITV-DUAL-SM	690-28-SM-G10-L14-X	-	-	-	1	1
PY-ITV-QUAD-SM01	620-52-SM-G10-L14-X	-	-	-	2	1
PY-ITV-SINGLE-TO39 (2+1)	R200-0403-03T-XXX-R27-L14	01S	93S	.018	3	2
PY-LA-S-510	IS231-716-XXX-R29-L14	01S	93S	.018	4	2
PY-LA-S-128	IS229-716-XXX-R29-L14	01S	93S	.018	4	2
PLY-LA-S-255	IS229-716-XXX-R29-L14	01S	93S	.018	4	2
PY-FTIR	R200-0404-02T-XXX-R27-L14	01S	93S	.018	5	2
PY-ITV-DUAL-TO39(3+1)	R200-0404-02T-XXX-R27-L14	01S	93S	.018	5	2
PYLCC 4X4-F8	620-28-SM-G10-L14-X	-	-	-	7	3
PYR-I-QUAD-TO5(7+1)	R200-0808-01T-XXX-R27-L14	75S	265S	.018	6	2

See last page for other mounting types including low profile options.
Heat sink socket available to reduce heat and noise. Contact Andon for details.

Fig. 01

Thru-Hole: N/A
Surface Mount: 690-28-SM-G10-X14-X

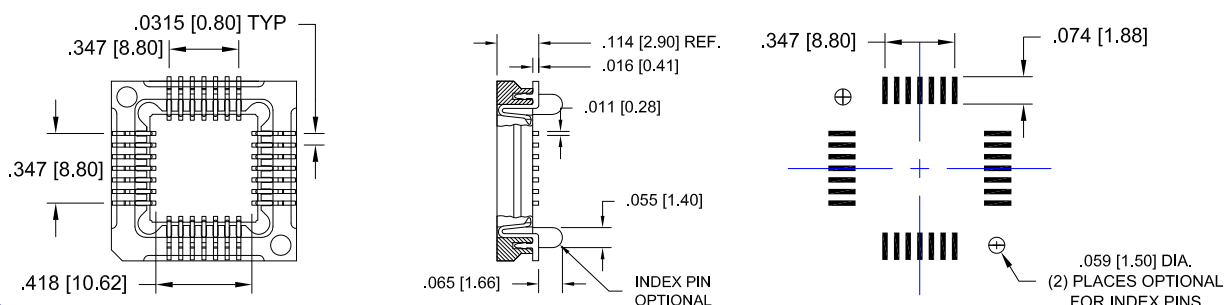
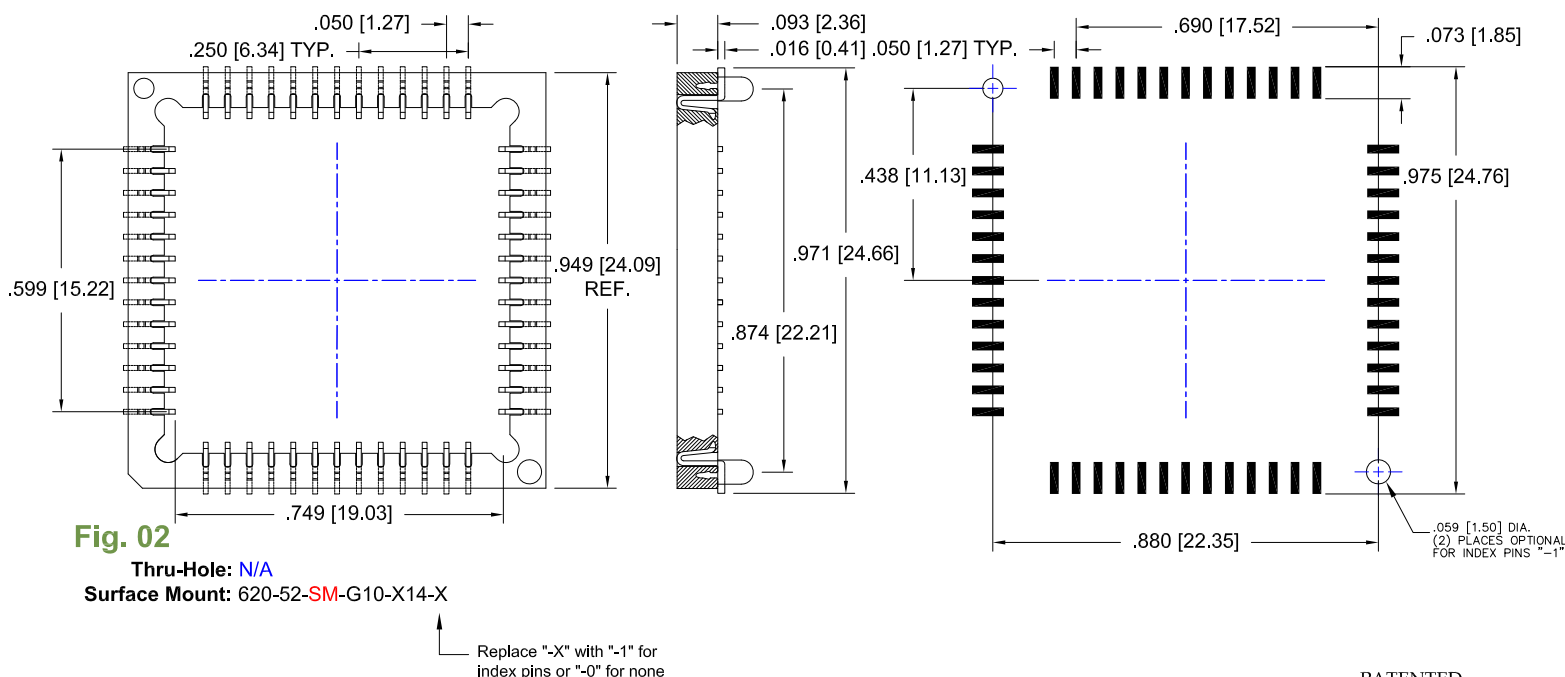


Fig. 02

Thru-Hole: N/A
Surface Mount: 620-52-SM-G10-X14-X



©Copyright 2016 Andon Electronics Corporation. All Rights Reserved. This material is protected under US and other copyrights and may not be copied, sold, or redistributed in any form without written permission of Andon Electronics Corporation. Copyrights and trademarks are property of their respective companies. We reserve the right to change specifications without notice. Andon makes no warranty, expressed or implied, as to the suitability of the sockets for the intended purpose.

PATENTED
"ANDON PROPRIETARY INFORMATION"
RoHS Compliant

*Sockets are not drawn to scale PYREOS LTD 3/15/2016

PYREOS LTD Continued

Socket Terminal Details Cross Section View Shown Units: in [mm]

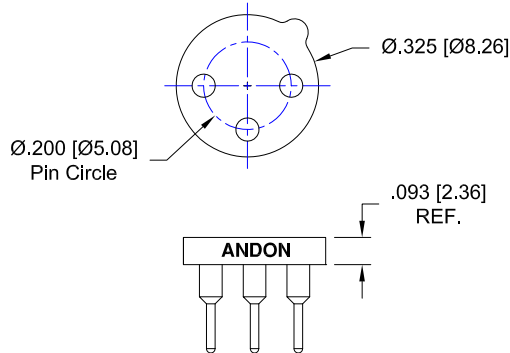


Fig. 03

Thru-Hole: R200-0403-03T-01S-R27-L14
Surface Mount: R200-0403-03T-93S-R27-L14

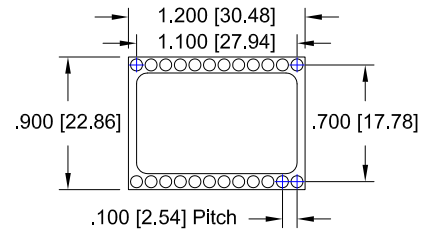


Fig. 04

Thru-Hole: IS229-716-01S-R29-L14
Surface Mount: IS229-716-93S-R29-L14

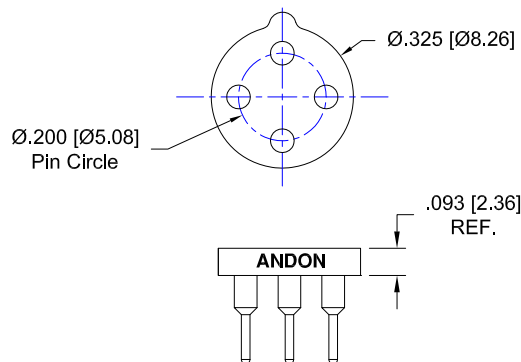


Fig. 05

Thru-Hole: R200-0404-02T-01S-R27-L14
Surface Mount: R200-0404-02T-93S-R27-L14

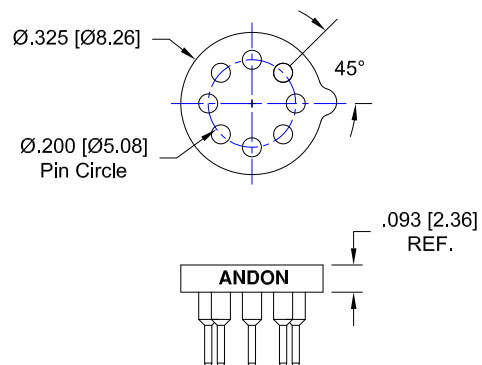


Fig. 06

Thru-Hole: R200-0808-01T-75S-R27-L14
Surface Mount: R200-0808-01T-265S-R27-L14

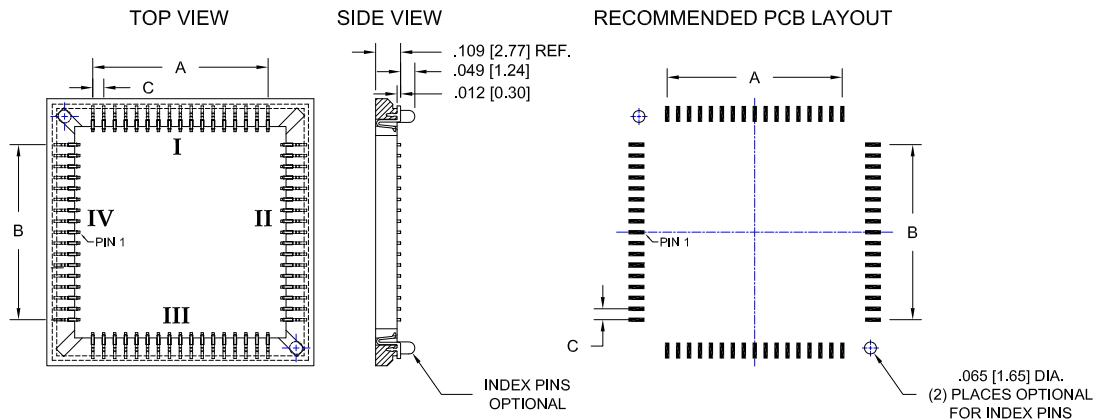
PYREOS LTD *Continued*

Socket Terminal Details *Cross Section View Shown Units: in [mm]*

.050 [1.27] Pitch LCC Sockets

**EXTRACTION TOOL
AVAILABLE**

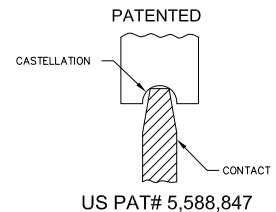
Fig. 07



Andon Part Number	Pin QTY.	A	B	C	Number of Pins (per side)			
					I	II	III	IV
620-16-SM-G10-L14-X	16	.150 (3.81)	.150 (3.81)	.050 (1.27)	4	4	4	4
620-20-SM-G10-L14-X	20	.200 (5.08)	.200 (5.08)	.050 (1.27)	5	5	5	5
620-28-SM-G10-L14-X	28	.300 (7.62)	.300 (7.62)	.050 (1.27)	7	7	7	7
620-40A-SM-G10-L14-X	40	.950 (24.13)	.950 (24.13)	.050 (1.27)	20	0	20	0
620-44-SM-G10-L14-X	44	.500 (12.70)	.500 (12.70)	.050 (1.27)	11	11	11	11
620-52-SM-G10-L14-X	52	.600 (15.24)	.600 (15.24)	.050 (1.27)	13	13	13	13
620-68-SM-G10-S14-X	68	.800 (20.32)	.800 (20.32)	.050 (1.27)	17	17	17	17
620-84-SM-G10-L14-X	84	1.000 (25.40)	1.000 (25.40)	.050 (1.27)	21	21	21	21
620-100-SM-G10-L14-X	100	1.200 (30.48)	1.200 (30.48)	.050 (1.27)	25	25	25	25

Replace "-X" with "-1" for index pins or "-0" for none

Contact Plating = Gold

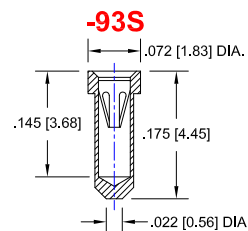
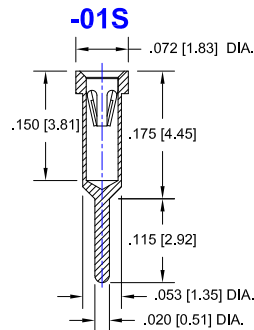
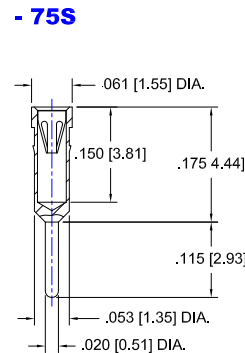
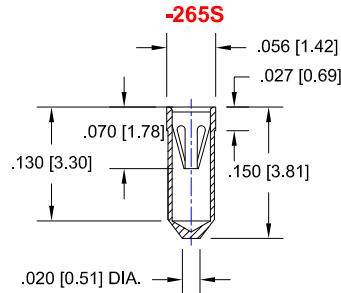


NON MAGNETIC PLATING AVAILABLE - G55

For Other Pin Configuration or Layouts, Contact Factory.

PYREOS LTD Continued

Socket Terminal Details Cross Section View Shown Units in [mm]



Technical Information

Material:

Insulator: Hi-Temp UL 94V-O
Terminal: Brass, per ASTM-B16
Contact: BeCu, Per ASTM-B194

Plating: RoHS COMPLIANT

R15 TERMINAL: GOLD / CONTACT: GOLD

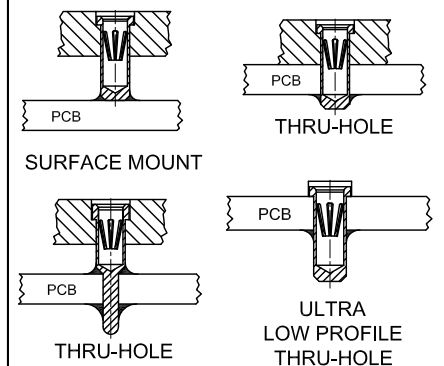
R17 TERMINAL: TIN / CONTACT: GOLD

OTHER PLATINGS AVAILABLE

Terminal Acceptance and Forces

Thru Hole Terminals				Surface Mount Terminals			
Thru Hole Terminal	Accepts Pin Diameter	Insertion Force	Withdrawal Force	Surface Mount Terminal	Accepts Pin Diameter	Insertion Force	Withdrawal Force
-01S	Ø.018 [Ø0.46]	9.0 oz Avg.	2.0 oz Min	-93S	Ø.018 [Ø0.46]	9.0 oz Avg.	2.0 oz Min
-75S	Ø.018 [Ø0.46]	9.0 oz Avg.	2.0 oz Min	-265S	Ø.018 [Ø0.46]	9.0 oz Avg.	2.0 oz Min

MOUNTING OPTIONS

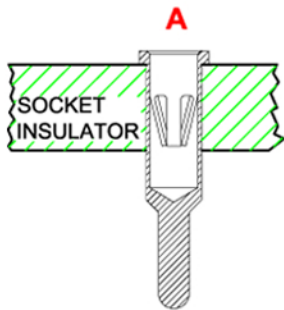


"ANDON PROPRIETARY INFORMATION"

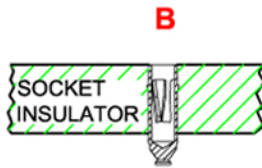
RoHS Compliant

*Sockets are not drawn to scale PYREOS LTD 3/15/2016

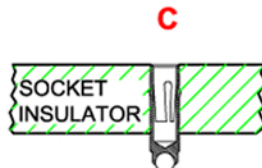
Mounting Options



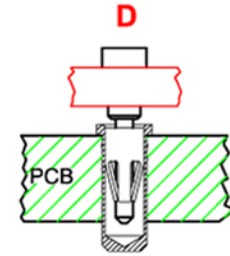
THRU-HOLE



SMD-FLAT FOOT



ROLLERBALL



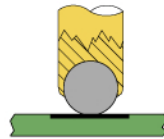
PCB FOR THRU-HOLE
INSULATOR FOR SMD

**CARRIER
WITH OR WITHOUT
SOLDER
WASHER**



**PIN SOCKET
BULK
WITH OR WITHOUT
SOLDER
WASHER**

**ROLLERBALL®
SOCKET**



BEFORE SOLDERING

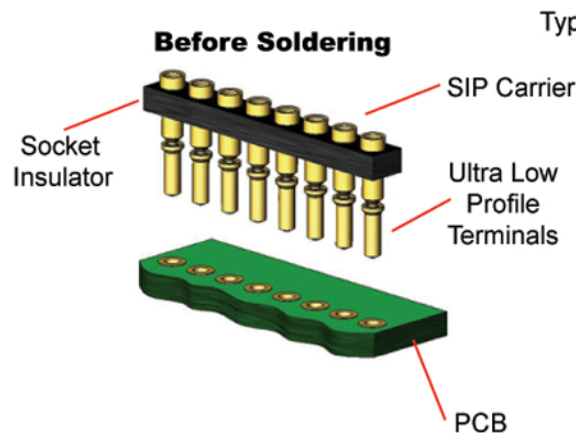
**ROLLERBALL®
SOCKET**



AFTER SOLDERING

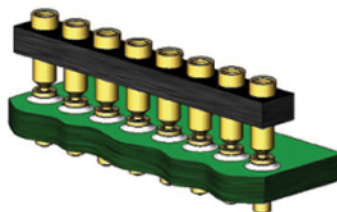
ULTRA LOW PROFILE SIP/DIP/PGA CARRIER ASSEMBLY

Before Soldering

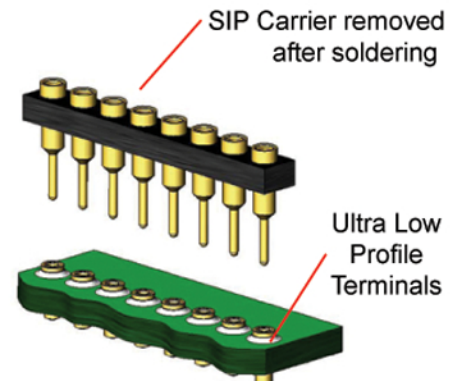


Type D

During Soldering



After Soldering



Available with or without solder washer