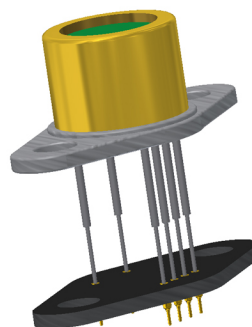
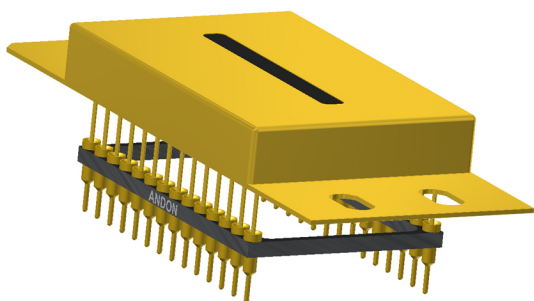




RoHS Compliant
ISO 9001
Certified

OPTOELECTRONIC SOCKETS FOR

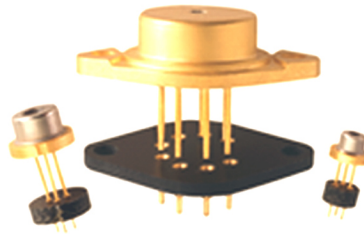


***Largest Line of High Reliability Sensor Sockets
with Andon's Unique Senstac™ Contact***

www.andonelect.com or www.andonelectronics.com

Princeton Lightwave, Inc. is a Copyright © of





Optoelectronic Sockets

High reliability sockets that will cost effectively:

*Protect
Test
Assemble
and*

Enable Replacing of Opto Devices

- Solder sockets on the PCB
- Plug-in sensors after assembly
- Eliminate ESD from handling
- Eliminate damage from soldering temperatures
- Eliminate damage from cleaning solvents
- Avoid cracking the glass seal
- Reduce shock damage to wire bonds

Customers will appreciate knowing that there are ANDON sockets available

Producers of optoelectronic devices may list ANDON on their engineering drawings and website to assist their customers in design engineering.

Distributors have an opportunity to increase their revenue by selling ANDON sockets with the sales of their optoelectronic devices.

Princeton Lightwave, Inc.						
Princeton Lightwave, Inc. Model Number	Andon Part Number Replace "XXX" with Terminal Type	Terminal Type		Pin Ø [in]	Figure Number	Page Number
		Thru-Hole	Surface Mount			
PLA-280	R100-SP02-02T-XXX-R27-L14	274K	281K	.018	1	1
PLA-200	R100-SP02-02T-XXX-R27-L14	274K	281K	.018	1	1
PLA-180	R100-SP02-02T-XXX-R27-L14	274K	281K	.018	1	1
PLA-100	R100-SP02-02T-XXX-R27-L14	274K	281K	.018	1	1
PGA-400	(2) 405-07-XXX-R27-L14	01S	93S	.018	3	1
PGA-300	R100-0403-05T-XXX-R27-L14	75S	265S	.018	2	1
PSL-450	(2) 405-07-XXX-R27-L14	01S	93S	.018	3	1
PSL-480	(2) 405-07-XXX-R27-L14	01S	93S	.018	3	1
PGA-200	F375-SP06-01-XXX-R27-L14	274K	281K	.018	5	2
640 Pixel	IS229-828-XXX-R27-L14	01S	93S	.018	4	1

Top View Shown
Units: in [mm]

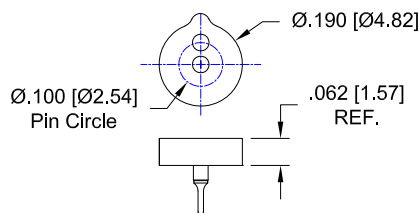


Fig. 1

Thru-Hole: R100-SP02-02T-274K-R27-L14

Surface Mount: R100-SP03-02T-281K-R27-L14

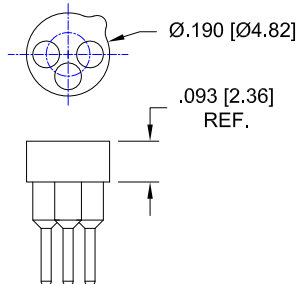


Fig. 2

Thru-Hole: R100-0403-05T-75S-R27-L14

Surface Mount: R100-0403-05T-265S-R27-L14

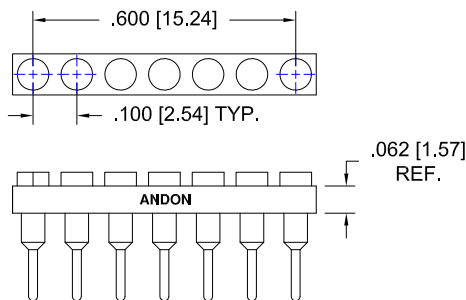


Fig. 3

Thru-Hole: (2) 405-07-01S-R27-L14

Surface Mount: (2) 405-07-93S-R27-L14

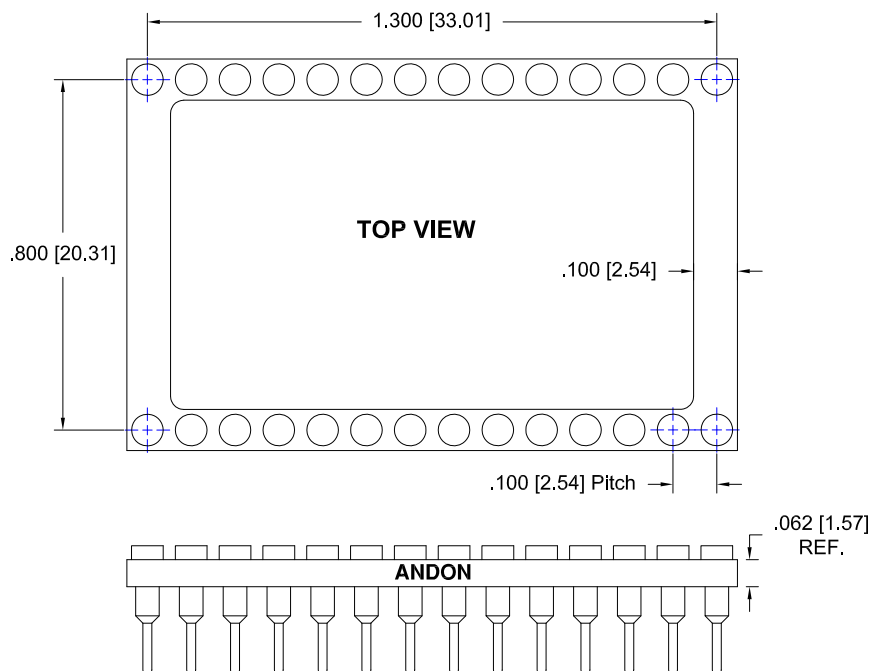


Fig. 4

Thru-Hole: IS229-828-01S-R27-L14

Surface Mount: IS229-828-93S-R27-L14

Princeton Lightwave Continued

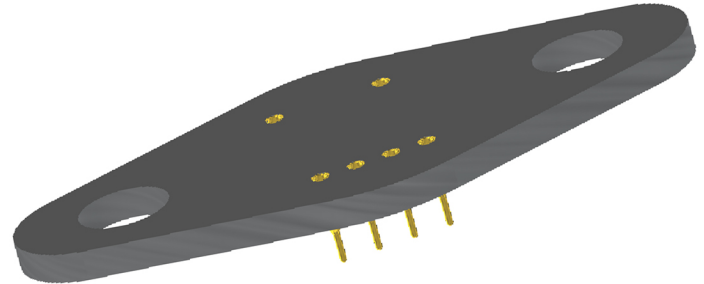
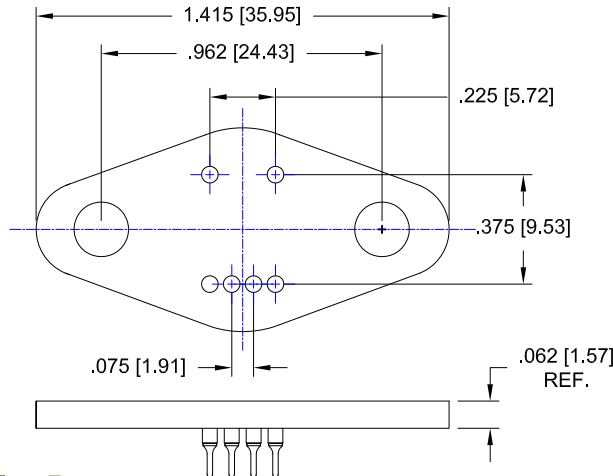


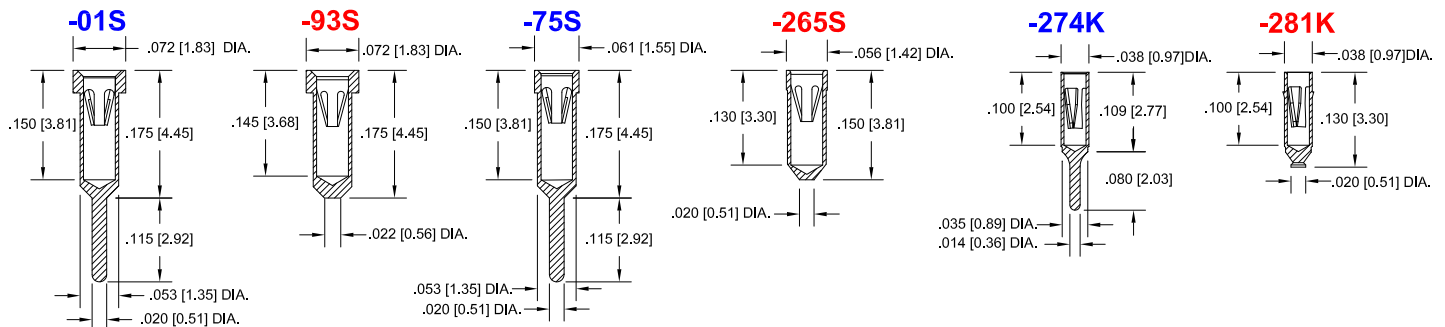
Fig. 5

Thru-Hole: F375-SP06-01-**274K**-R27-L14

Surface Mount: F375-SP06-01-**281K**-R27-L14

Socket Terminal Details

Cross Section View Shown Units: in [mm]



Technical Information

Material:

Insulator: Hi-Temp UL 94V-O
Terminal: Brass, per ASTM-B16
Contact: BeCu, Per ASTM-B194

Plating: RoHS COMPLIANT

R27 TERMINAL: GOLD / CONTACT: GOLD

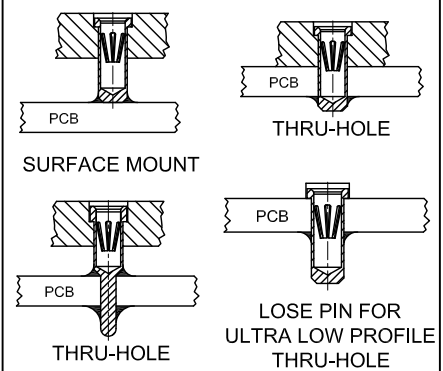
R17 TERMINAL: TIN / CONTACT: GOLD

OTHER PLATINGS AVAILABLE

Terminal Acceptance and Forces

Thru Hole Terminals				Surface Mount Terminals			
Thru Hole Terminal	Accepts Pin Diameter	Insertion Force	Withdrawal Force	Surface Mount Terminal	Accepts Pin Diameter	Insertion Force	Withdrawal Force
-274K	Ø.018 [Ø0.46]	1.0 oz Max	0.5 oz Min	-281K	Ø.018 [Ø0.46]	1.0 oz Max	0.5 oz Min
-75S	Ø.018 [Ø0.46]	9.0 oz Avg.	2.0 oz Min	-265S	Ø.018 [Ø0.46]	9.0 oz Avg.	2.0 oz Min
-01S	Ø.018 [Ø0.46]	9.0 oz Avg.	2.0 oz Min	-93S	Ø.018 [Ø0.46]	9.0 oz Avg.	2.0 oz Min

MOUNTING OPTIONS



At Andon Electronics we provide interconnection components that help companies to cost effectively protect, assemble, test and replace their semiconductor devices.



- PGA SOCKETS & ADAPTERS
- BGA SOCKETS & ADAPTERS
- SMD SOCKETS & ADAPTERS
- DIP SOCKETS & ADAPTERS
- SIP SOCKETS & ADAPTERS
- FUSE SOCKETS
- TERMINALS AND TEST JACKS
- LCC SOCKETS
- PLCC SOCKETS
- IMAGE SENSOR SOCKETS
- GAS SENSOR SOCKETS
- OPTOELECTRONIC SOCKETS
- CARRIER SOCKETS
- BATTERY SOCKETS
- TEST SOCKETS

We offer custom as well as our standard catalog items.

Our intention is to be your one stop for all of your interconnection requirements.

Please visit our website at www.andonelect.com if you have any questions please do not hesitate to contact us.

Contact: Customer Service

Phone: (401) 333-0388

Fax: (401) 333-0287

Email: info@andonelect.com



Distributed Worldwide.



ANDON ELECTRONICS CORPORATION

4 Court Drive Lincoln, RI 02865 USA

Phone: 401-333-0388 Fax: 401-333-0287

Email: Info@andonelect.com

Visit us on the Web at www.andonelect.com
or www.andonelectronics.com