

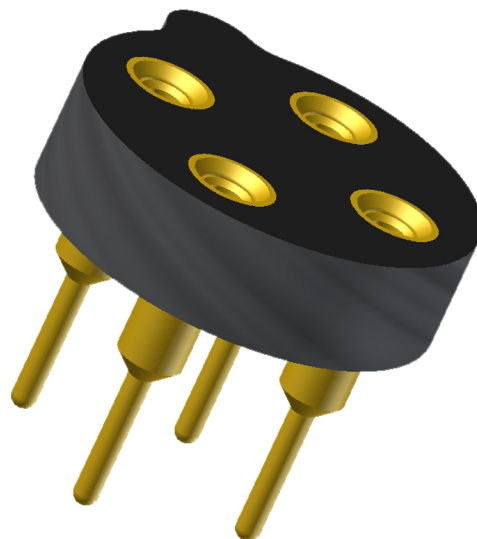


ANDON
INTERCONNECTION SPECIALISTS



RoHS Compliant
ISO 9001
Certified

**HIGH RELIABILITY
OPTOELECTRONIC SOCKETS FOR
MURATA MANUFACTURING**



Featuring Andon's Unique Senstac™ Contact

MURATA MANUFACTURING is a trade mark of MURATA MANUFACTURING

| MURATA MANUFACTURING | | | | | | |
|----------------------|-------------------------------------------------------|---------------|---------------|---------------|------------------|----------------|
| Model Number | Andon Part Number Replace "XXX" with Terminal Type | Terminal Type | | Pin Ø [in] | Figure Number | Page Number |
| | | Thru-Hole | Surface Mount | | | |
| IRA-E420QW1 | R145-0403-01T-XXX-R27-L14 | 01S | 93S | .018 | 3 | 2 |
| IRA-E420S1 | R200-0403-02T-XXX-R27-L14 | 01S | 93S | .018 | 1 | 2 |
| IRA-E420SW1 | R200-0403-02T-XXX-R27-L14 | 01S | 93S | .018 | 1 | 2 |
| IRA-E700 SERIES | R200-0403-02T-XXX-R27-L14 | 01S | 93S | .018 | 1 | 2 |
| IRA-E700ST0 | R200-0403-02T-XXX-R27-L14 | 01S | 93S | .018 | 1 | 2 |
| IRA-E710ST0 | R200-0403-02T-XXX-R27-L14 | 01S | 93S | .018 | 1 | 2 |
| IRA-E900 SERIES | R200-0403-02T-XXX-R27-L14 | 01S | 93S | .018 | 1 | 2 |
| IRA-E900ST1 | R200-0403-02T-XXX-R27-L14 | 01S | 93S | .018 | 1 | 2 |
| IRA-E910ST1 | R200-0403-02T-XXX-R27-L14 | 01S | 93S | .018 | 1 | 2 |
| IRA-E940ST1 | R200-0404-01T-XXX-R27-L14 | 01S | 93S | .018 | 2 | 2 |
| IRA-S210ST01 | R200-0403-02T-XXX-R27-L14 | 01S | 93S | .018 | 1 | 2 |
| IRA-S230ST01 | R200-0403-02T-XXX-R27-L14 | 01S | 93S | .018 | 1 | 2 |
| IRA-S410ST01 | R200-0403-02T-XXX-R27-L14 | 01S | 93S | .018 | 1 | 2 |
| IRA-S410ST03 | R200-0403-02T-XXX-R27-L14 | 01S | 93S | .018 | 1 | 2 |
| IRA-S510ST01 | R200-0403-02T-XXX-R27-L14 | 01S | 93S | .018 | 1 | 2 |
| IRA-S510ST03 | R200-0403-02T-XXX-R27-L14 | 01S | 93S | .018 | 1 | 2 |
| JEG11-0222 | R200-0403-02T-XXX-R27-L14 | 01S | 93S | .018 | 1 | 2 |
| MA300D1-1 | R197-0402-01T-XXX-R27-L14 | 01S | 93S | .018 | 4 | 2 |
| MA40S4 | R197-0402-01T-XXX-R27-L14 | 01S | 93S | .018 | 4 | 2 |
| MA40S4R | R197-0402-01T-XXX-R27-L14 | 01S | 93S | .018 | 4 | 2 |
| PKM13EPYH4002-B0 | R197-0402-01T-XXX-R27-L14 | 01S | 93S | .018 | 4 | 2 |
| PKM13EPYH400-A0 | R197-0402-01T-XXX-R27-L14 | 01S | 93S | .018 | 4 | 2 |
| PKM17EPYH4001-B0 | R395-0402-01T-XXX-R27-L14 | 295V | 439V | .030 | 5 | 2 |
| PKM17EPYH4002-B0 | R395-0402-01T-XXX-R27-L14 | 295V | 439V | .030 | 5 | 2 |
| PKM22EPYH2001-B0 | R395-0402-01T-XXX-R27-L14 | 295V | 439V | .030 | 5 | 2 |
| PKM22EPYH2002-B0 | R395-0402-01T-XXX-R27-L14 | 295V | 439V | .030 | 5 | 2 |
| PKM22EPYH4001-B0 | R395-0402-01T-XXX-R27-L14 | 295V | 439V | .030 | 5 | 2 |
| PKM22EPYH4002-B0 | R395-0402-01T-XXX-R27-L14 | 295V | 439V | .030 | 5 | 2 |
| PKM22EPYH4005-B0 | R395-0402-01T-XXX-R27-L14 | 295V | 439V | .030 | 5 | 2 |

See last page for other mounting types including low profile options.
Heat sink socket available to reduce heat and noise. Contact Andon for details.

MURATA MANUFACTURING *Continued*

Top View Shown

Units: in [mm]

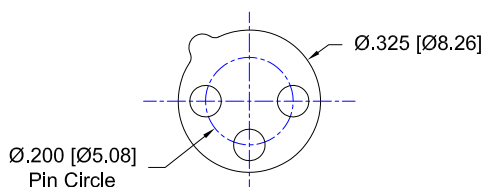


FIG. 1

Thru-Hole: R200-0403-02T-01S-R27-L14
Surface Mount: R200-0403-02T-93S-R27-L14

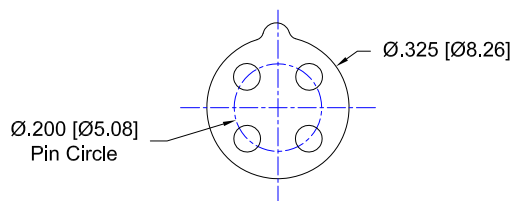


FIG. 2

Thru-Hole: R200-0404-01T-01S-R27-L14
Surface Mount: R200-0404-01T-93S-R27-L14

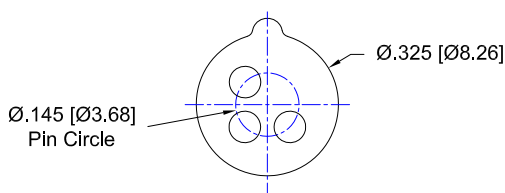


FIG. 3

Thru-Hole: R145-0403-01T-01S-R27-L14
Surface Mount: R145-0403-01T-93S-R27-L14

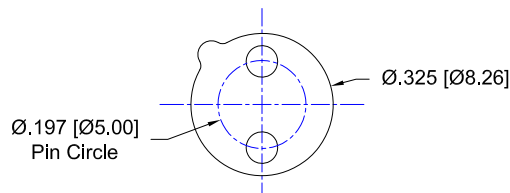


FIG. 4

Thru-Hole: R197-0402-01T-01S-R27-L14
Surface Mount: R197-0402-01T-93S-R27-L14

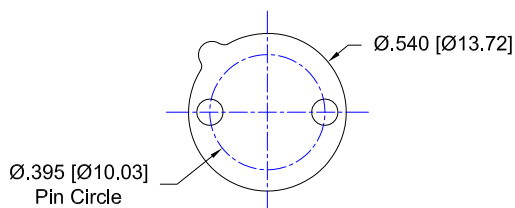
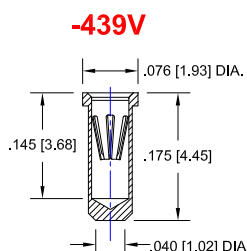
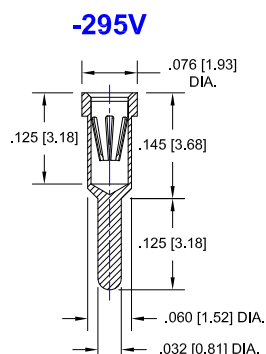
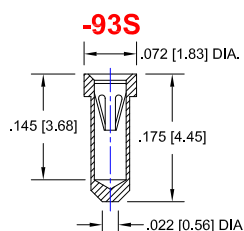
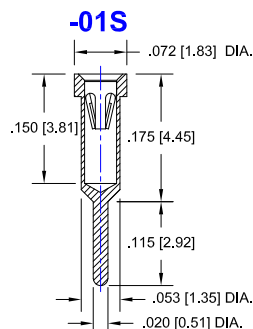


FIG. 5

Thru-Hole: R395-0402-01T-295V-R27-L14
Surface Mount: R395-0402-01T-439V-R27-L14

MURATA MANUFACTURING *Continued*

Socket Terminal Details Cross Section View Shown Units: in [mm]



Technical Information

Material:

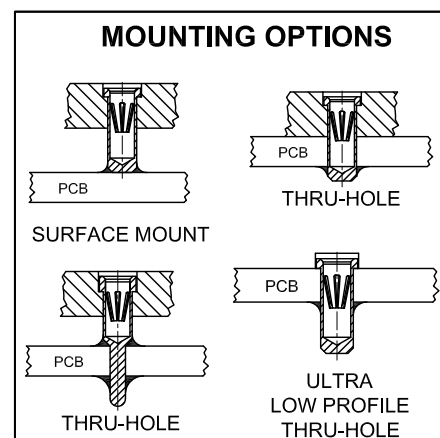
Insulator: Hi-Temp UL 94V-O
Terminal: Brass, per ASTM-B16
Contact: BeCu, Per ASTM-B194

Plating: RoHS COMPLIANT
R27 TERMINAL: GOLD / CONTACT: GOLD
R29 TERMINAL: TIN / CONTACT: GOLD
OTHER PLATINGS AVAILABLE

Terminal Acceptance and Forces

| Thru Hole Terminals | | | | Surface Mount Terminals | | | |
|---------------------|----------------------|-----------------|------------------|-------------------------|----------------------|-----------------|------------------|
| Thru Hole Terminal | Accepts Pin Diameter | Insertion Force | Withdrawal Force | Surface Mount Terminal | Accepts Pin Diameter | Insertion Force | Withdrawal Force |
| -01S | Ø.018 [Ø0.46] | 9.0 oz Avg. | 2.0 oz Min | -93S | Ø.018 [Ø0.46] | 9.0 oz Avg. | 2.0 oz Min |
| -295V | Ø.030 [Ø0.76] | 13.2 oz Avg. | 3.5 oz Min | -439V | Ø.030 [Ø0.76] | 13.2 oz Avg. | 3.5 oz Min |

©Copyright 2016 Andon Electronics Corporation. All Rights Reserved. This material is protected under US and other copyrights and may not be copied, sold, or redistributed in any form without written permission of Andon Electronics Corporation. Copyrights and trademarks are property of their respective companies. We reserve the right to change specifications without notice. Andon makes no warranty, expressed or implied, as to the suitability of the sockets for the intended purpose.

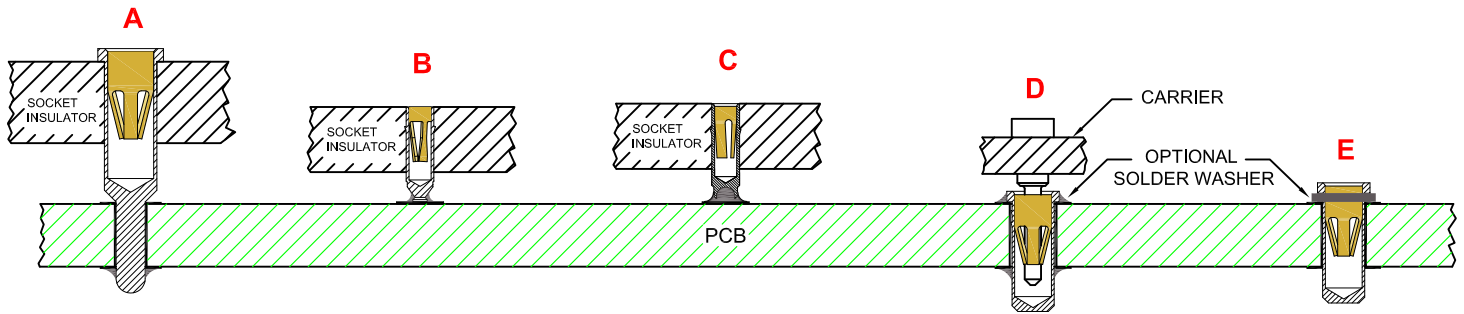


"ANDON PROPRIETARY INFORMATION"
RoHS Compliant

*Sockets are not drawn to scale MURATA MANUFACTURING 9/2/2016

ANDON ELECTRONICS CORPORATION
4 Court Drive, Lincoln RI 02865, United States of America

www.andonelectronics.com or www.andonelect.com
Phone 401-333-0388 Fax 401-333-0287
Email Info@andonelect.com



**THRU-HOLE
SOCKET**

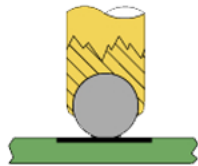
SMD-SOCKET

**SMD
ROLLERBALL®
SOCKET
(PATENTED)**

**REMOVABLE
CARRIER
WITH ULTRA-LOW
PROFILE PIN SOCKETS**

**INDIVIDUAL
ULTRA-LOW PROFILE
PIN SOCKETS
(BEFORE SOLDERING)**

**ROLLERBALL®
SOCKET**



BEFORE SOLDERING

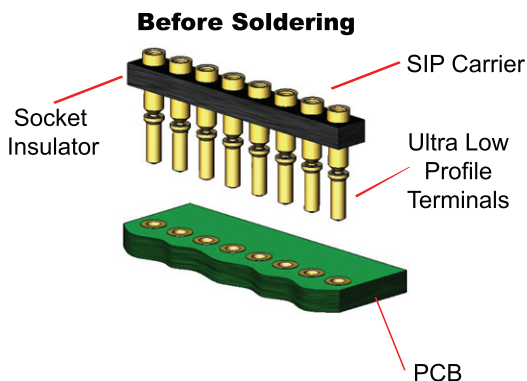
**ROLLERBALL®
SOCKET**



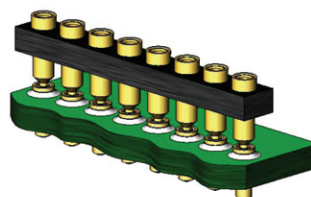
AFTER SOLDERING

A more reliable solder joint for surface mount applications !

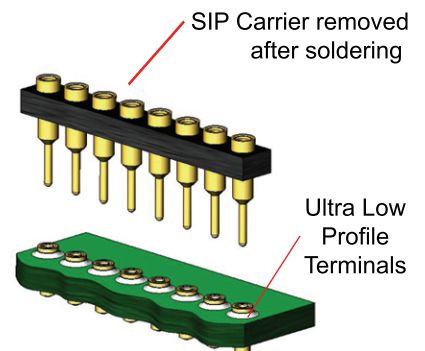
ULTRA LOW PROFILE SIP/DIP/PGA CARRIER ASSEMBLY See 'D' above



During Soldering



After Soldering



Available with or without solder washer