

LASER DIODE, Inc.						
Laser Diode, Inc. Model Number	Andon Part Number Replace "XXX" with Terminal Type	Terminal Type		Pin Ø [in]	Figure Number	Page Number
		Thru-Hole	Surface Mount			
SCW 1331Y-120XX	IS229-314-XXX-R29-L14	01S	93S	.018	1	2
SCW 1332Y-120XX	(2) 405-07-XXX-R29-L14	01S	93S	.018	5	3
SCW 1531Y-100XX	IS229-314-XXX-R29-L14	01S	93S	.018	1	2
SCW 1532Y-100XX	(2) 405-07-XXX-R29-L14	01S	93S	.018	5	3
SCW 1631Y-100XX	IS229-314-XXX-R29-L14	01S	93S	.018	1	2
SCW 1632Y-100XX	(2) 405-07-XXX-R29-L14	01S	93S	.018	5	3
SCW 1336X-120XXR	R079-0403-01N-XXX-R15-L14	274K	281K	.018	2	2
SCW 1536X-120XXR	R079-0403-01N-XXX-R15-L14	274K	281K	.018	2	2
SCW 1636X-100XXR	R079-0403-01N-XXX-R15-L14	274K	281K	.018	2	2
TL2063PT-010FC	IS229-420-XXX-R29-L14	01S	93S	.018	3	3
TL2063PT-005FC	IS229-420-XXX-R29-L14	01S	93S	.018	3	3
TL2065PT-010FC	IS229-420-XXX-R29-L14	01S	93S	.018	3	3
TL2065PT-005FC	IS229-420-XXX-R29-L14	01S	93S	.018	3	3
RT2000PT-052FC	IS229-420-XXX-R29-L14	01S	93S	.018	3	3
RT2000PT-155FC	IS229-420-XXX-R29-L14	01S	93S	.018	3	3
RT2000PT-622FC	IS229-420-XXX-R29-L14	01S	93S	.018	3	3
LPD 3080-PM1	R100-SP03-02T-XXX-R15-L4	274K	281K	.018	4	3
LPD 3080-PM2	R100-SP03-02T-XXX-R15-L4	274K	281K	.018	4	3
LPD 3080-PM3	R100-SP03-02T-XXX-R15-L4	274K	281K	.018	4	3
LPD 3080-PM4	R100-SP03-02T-XXX-R15-L4	274K	281K	.018	4	3
LR35-9mm	R100-0403-05N-XXX-R15-L14	75S	265S	.018	6	3
LR35-TO-5T	R200-SP02-04-XXX-R15-L14	75S	265S	.018	7	3
LR35-TO-18T	R100-0402-02T-XXX-R15-L14	75S	265S	.018	8	3
LKR-2S-35-9mm	R100-0403-05N-XXX-R15-L14	75S	265S	.018	6	3
LKR-2S-35-TO-5T	R200-SP02-04-XXX-R15-L14	75S	265S	.018	7	3
LKR-2S-35-TO-18T	R100-0402-02T-XXX-R15-L14	75S	265S	.018	8	3
LKR-3S-35-9mm	R100-0403-05N-XXX-R15-L14	75S	265S	.018	6	3
LKR-3S-35-TO-5T	R200-SP02-04-XXX-R15-L14	75S	265S	.018	7	3
LKR-3S-35-TO-18T	R100-0402-02T-XXX-R15-L14	75S	265S	.018	8	3
LKR35L-9mm	R100-0403-05N-XXX-R15-L14	75S	265S	.018	6	3
LKR35L-TO-5T	R200-SP02-04-XXX-R15-L14	75S	265S	.018	7	3
LKR35L-TO-18T	R100-0402-02T-XXX-R15-L14	75S	265S	.018	8	3
LPAD SERIES	IS229-3108-XXX-R29-L14	01S	93S	.018	9	3
LPA SERIES	R100-0404-02T-XXX-R15-L14	75S	265S	.018	10	3
LDST SERIES	R100-0404-02T-XXX-R15-L14	75S	265S	.018	10	3
LDFC SERIES	R100-0404-02T-XXX-R15-L14	75S	265S	.018	10	3
CW 0500-HH-XX	C10-010-09-01-XXX-R15-L14	433E	285E	.040	11	4
CW 0500-HF-XX	C10-010-09-01-XXX-R15-L14	433E	285E	.040	11	4
CW 0500-90-XX	R100-0403-05N-XXX-R15-L14	75S	265S	.018	6	3
CW 0500-T3-XX	F500-SP09-01-XXX-R15-L14	433E	285E	.040	12	4
CW 1000-HH-XX	C10-010-09-01-XXX-R15-L14	433E	285E	.040	11	4
CW 1000-HF-XX	C10-010-09-01-XXX-R15-L14	433E	285E	.040	11	4
CW 1000-90-XX	R100-0403-05N-XXX-R15-L14	75S	265S	.018	6	3
CW 1000-T3-XX	F500-SP09-01-XXX-R15-L14	433E	285E	.040	12	4
CW 2000-HH-XX	C10-010-09-01-XXX-R15-L14	433E	285E	.040	11	4
CW 2000-HF-XX	C10-010-09-01-XXX-R15-L14	433E	285E	.040	11	4
CW 2000-90-XX	R100-0403-05N-XXX-R15-L14	75S	265S	.018	6	3
CW 2000-T3-XX	F500-SP09-01-XXX-R15-L14	433E	285E	.040	12	4
CW 5000-HH-XX	C10-010-09-01-XXX-R15-L14	433E	285E	.040	11	4
CW 5000-HF-XX	C10-010-09-01-XXX-R15-L14	433E	285E	.040	11	4
CW 5000-90-XX	R100-0403-05N-XXX-R15-L14	75S	265S	.018	6	3
CW 5000-T3-XX	F500-SP09-01-XXX-R15-L14	433E	285E	.040	12	4
CVD XXX-TO-18T	R100-0402-02T-XXX-R15-L14	75S	265S	.018	8	3
CVD XXX-TO-5T	R200-SP02-04-XXX-R15-L14	75S	265S	.018	7	3
CVD XXX-90	R100-0403-05N-XXX-R15-L14	75S	265S	.180	6	3

LASER DIODE, Inc <i>continued</i>						
Laser Diode, Inc. Model Number	Andon Part Number Replace "XXX" with Terminal Type	Terminal Type		Pin Ø [in]	Figure Number	Page Number
		Thru-Hole	Surface Mount			
LP8M05-23-50	IS229-314-XXX-R29-L14	01S	93S	.018	1	2
LP8M05-23-62	IS229-314-XXX-R29-L14	01S	93S	.018	1	2
LP8M10-23-50	IS229-314-XXX-R29-L14	01S	93S	.018	1	2
LP8M10-23-62	IS229-314-XXX-R29-L14	01S	93S	.018	1	2
LDSF SERIES	IS229-314-XXX-R29-L14	01S	93S	.018	1	2
LDPF SERIES	IS229-314-XXX-R29-L14	01S	93S	.018	1	2
LDPW SERIES	IS229-314-XXX-R29-L14	01S	93S	.018	1	2
LDFR SERIES	IS229-314-XXX-R29-L14	01S	93S	.018	1	2
SCW-1301 PACKAGE	IS229-314-XXX-R29-L14	01S	93S	.018	1	2
TS 2143 Transmitter	108-00628-XXX-R15-B10	01S	93S	.018	13	4
RT 2714 Receiver	108-00629-XXX-R15-B10	01S	93S	.018	14	4
LDT 362-040	IS229-314-XXX-R29-L14	01S	93S	.018	1	2
LDT 362-080	IS229-314-XXX-R29-L14	01S	93S	.018	1	2
LDT 362NF-040	IS229-314-XXX-R29-L14	01S	93S	.018	1	2
LDT 362NF-080	IS229-314-XXX-R29-L14	01S	93S	.018	1	2
LDT 362E-040	IS229-314-XXX-R29-L14	01S	93S	.018	1	2
LDT 362E-080	IS229-314-XXX-R29-L14	01S	93S	.018	1	2
LDT 60005-004	IS229-314-XXX-R29-L14	01S	93S	.018	1	2
LDT 60005-008	IS229-314-XXX-R29-L14	01S	93S	.018	1	2
LDT 60005NF-004	IS229-314-XXX-R29-L14	01S	93S	.018	1	2
LDT 60005NF-008	IS229-314-XXX-R29-L14	01S	93S	.018	1	2
LDT 6000E-004	IS229-314-XXX-R29-L14	01S	93S	.018	1	2
LDT 6000E-008	IS229-314-XXX-R29-L14	01S	93S	.018	1	2
CWR 635-90	R100-0403-05N-XXX-R15-L14	75S	265S	.018	6	3
CWR 635-BF	(2) 405-07-XXX-R29-L14	01S	93S	.018	5	3
CWR 635-MD	IS229-3106-XXX-R29-L14	01S	93S	.018	15	4
CVL 57-9mm	R100-0403-05N-XXX-R15-L14	01S	93S	.018	1	2
CVL 57-TO18T	R100-0402-02T-XXX-R15-L14	75S	265S	.018	8	3
CVL 2S57-9mm	R100-0403-05N-XXX-R15-L14	01S	93	.018	1	2
CVL 2S57-TO18T	R100-0402-02T-XXX-R15-L14	75S	265S	.018	8	3
CVL 3S57-9mm	R100-0403-05N-XXX-R15-L14	01S	93S	.018	1	2
CVL 3S57-TO18T	R100-0402-02T-XXX-R15-L14	75S	265S	.018	8	3
CVL 4S57-9mm	R100-0403-05N-XXX-R15-L14	01S	93S	.018	1	2
CVL 4S57-TO18T	R100-0402-02T-XXX-R15-L14	75S	265S	.018	8	3

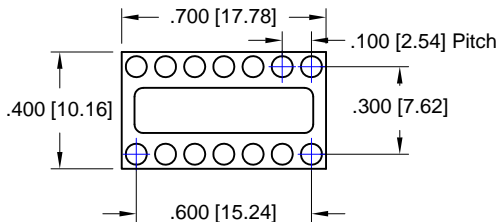


Fig. 1

Thru-Hole: IS229-314-01S-R29-L14
Surface Mount: IS229-314-93S-R29-L14

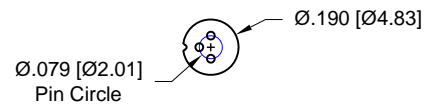


Fig. 2

Thru-Hole: R079-0403-01N-274K-R15-L14
Surface Mount: R079-0403-01N-281K-R15-L14

LASER DIODE, Inc Continued

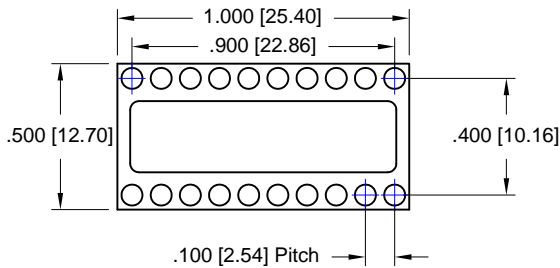


Fig. 3
Thru-Hole: IS229-420-01S-R29-L14
Surface Mount: IS229-420-93S-R29-L14

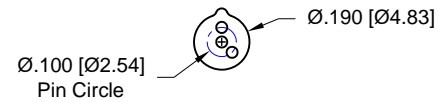


Fig. 4
Thru-Hole: R100-SP03-02T-274K-R15-L14
Surface Mount: R100-SP03-02T-281K-R15-L14

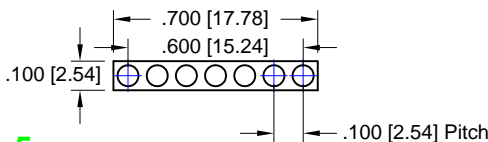


Fig. 5
Thru-Hole: (2) 405-07-01S-R29-L14
Surface Mount: (2) 406-07-93S-R29-L14

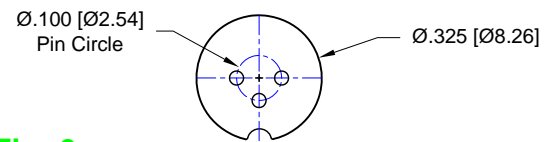


Fig. 6
Thru-Hole: R100-0403-05N-75S-R15-L14
Surface Mount: R100-0403-05N-265S-R15-L14

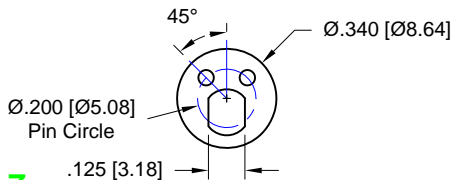


Fig. 7
Thru-Hole: R200-SP02-04-75S-R15-L14
Surface Mount: R200-SP02-04-265S-R15-L14

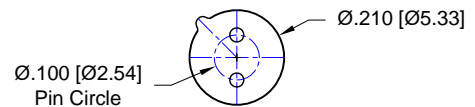


Fig. 8
Thru-Hole: R100-0402-02T-75S-R15-L14
Surface Mount: R100-0402-02T-265S-R15-L14

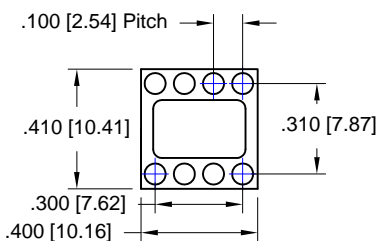


Fig. 9
Thru-Hole: IS229-3108-01S-R29-L14
Surface Mount: IS229-3108-93S-R29-L14

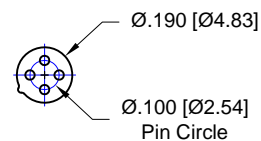


Fig. 10
Thru-Hole: R100-0404-02T-75S-R15-L14
Surface Mount: R100-0404-02T-265S-R15-L14

LASER DIODE, Inc. Continued

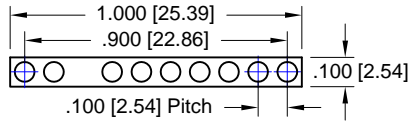


Fig. 11

Thru-Hole: C10-010-09-01-433E-R15-L14
Surface Mount: C10-010-09-01-285E-R15-L14

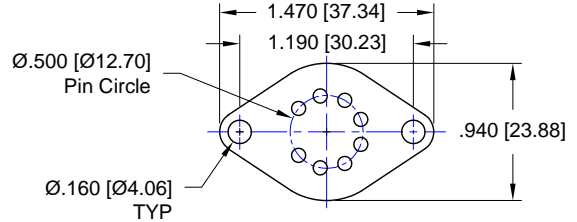


Fig. 12

Thru-Hole: F500-SP09-01-433E-R15-L14
Surface Mount: F500-SP09-01-285E-R15-L14

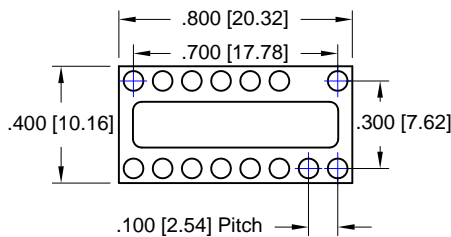


Fig. 13

Thru-Hole: 108-00628-01S-R15-B10
Surface Mount: 108-00628-93S-R15-B10

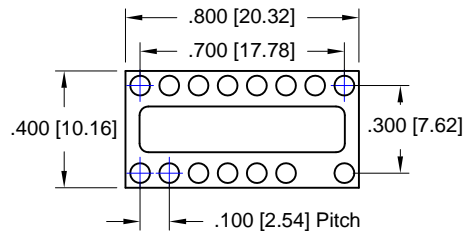


Fig. 14

Thru-Hole: 108-00629-01S-R15-B10
Surface Mount: 108-00629-93S-R15-B10

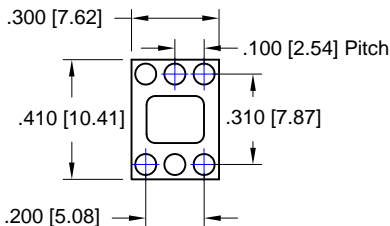
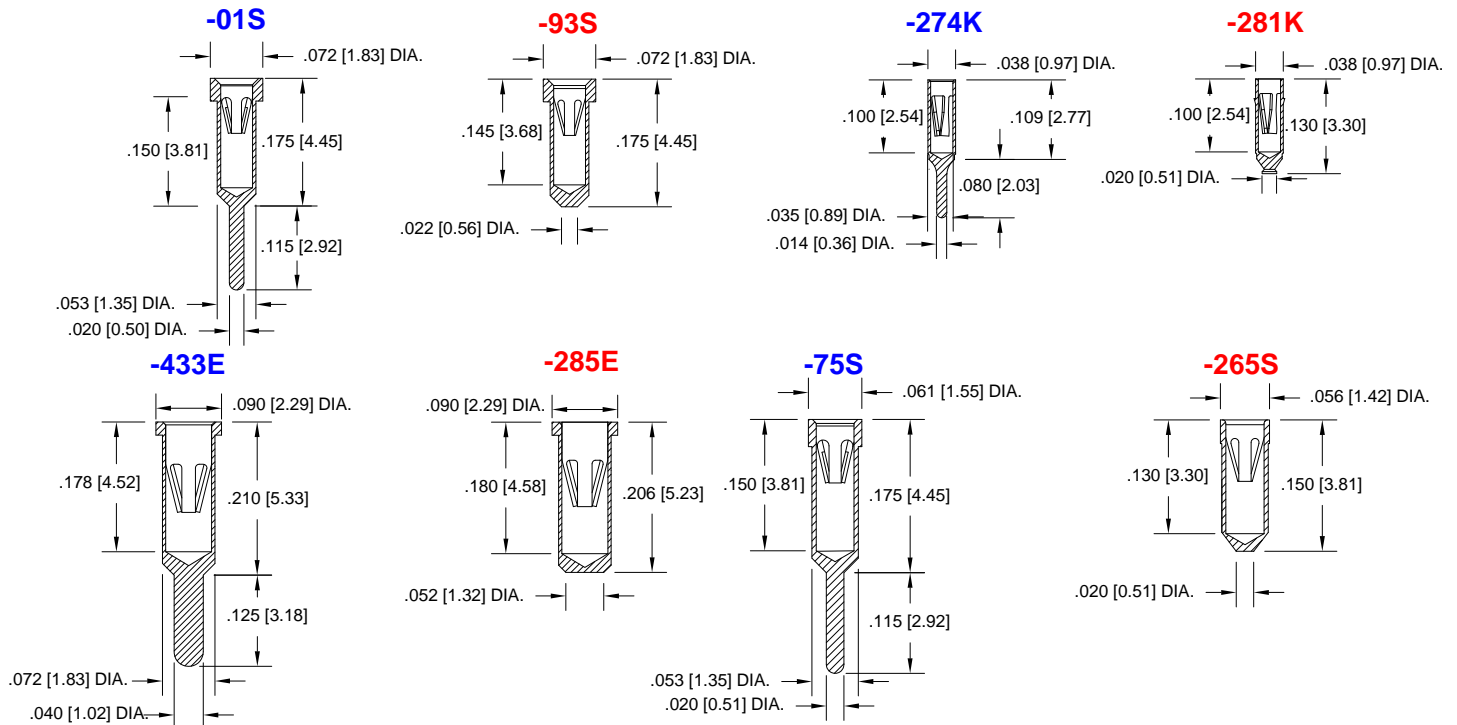


Fig. 15

Thru-Hole: IS229-3106-01S-R29-L14
Surface Mount: IS229-3106-93S-R29-L14

LASER DIODE, Inc. Continued

Socket Terminal Details Cross Section View Shown Units: in [mm]



Material:

Insulator: Hi-Temp UL 94V-O
Terminal: Brass, per ASTM-B16
Contact: BeCu, Per ASTM-B194

Plating: RoHS COMPLIANT

R15 TERMINAL: GOLD / CONTACT: GOLD

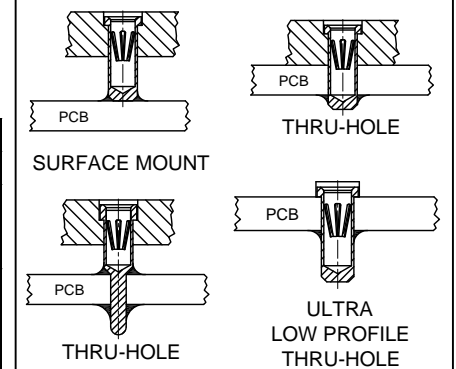
R17 TERMINAL: TIN / CONTACT: GOLD

OTHER PLATINGS AVAILABLE

Terminal Acceptance and Forces

Thru-Hole Terminal	Thru-Hole Terminals			Surface Mount Terminals			
	Accepts Pin Diameter	Insertion Force	Withdrawal Force	Surface Mount Terminal	Accepts Pin Diameter	Insertion Force	Withdrawal Force
-01S	Ø.018 [Ø0.46]	9.0 oz Avg.	2.0 oz Min	-93S	Ø.018 [Ø0.46]	9.0 oz Avg.	2.0 oz Min
-274K	Ø.018 [Ø0.46]	1.0 oz Max	0.5 oz Min	-281K	Ø.018 [Ø0.46]	1.0 oz Max	0.5 oz Min
-75S	Ø.018 [Ø1.46]	9.0 oz Avg.	2.0 oz Min	-265S	Ø.018 [Ø0.46]	9.0 oz Avg.	2.0 oz Min
-433E	Ø.040 [Ø1.02]	36.0 oz Max	3.9 oz Min	-285E	Ø.040 [Ø1.02]	36.0 oz Avg.	3.9 oz Min

MOUNTING OPTIONS



"ANDON PROPRIETARY INFORMATION"

RoHS Compliant

*Sockets are not drawn to scale Laser Diode, Inc. 06/25/2010