



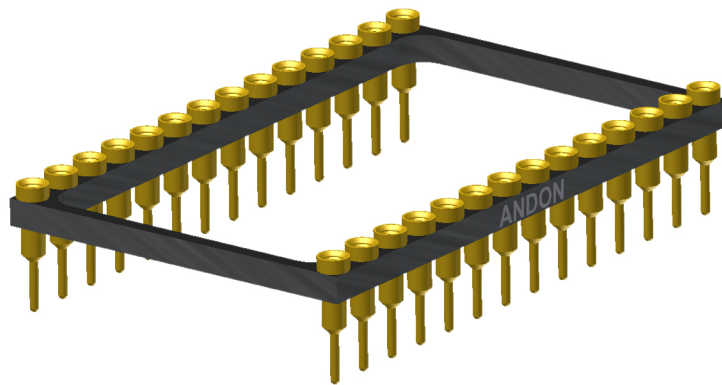
**ANDON**  
INTERCONNECTION SPECIALISTS



RoHS Compliant  
ISO 9001  
Certified

**HIGH RELIABILITY  
OPTOELECTRONIC SOCKETS FOR  
JMSIENNA CO.,LTD**

**JMSIENNA Co., LTD**  
*Solutions of Optoelectronics*

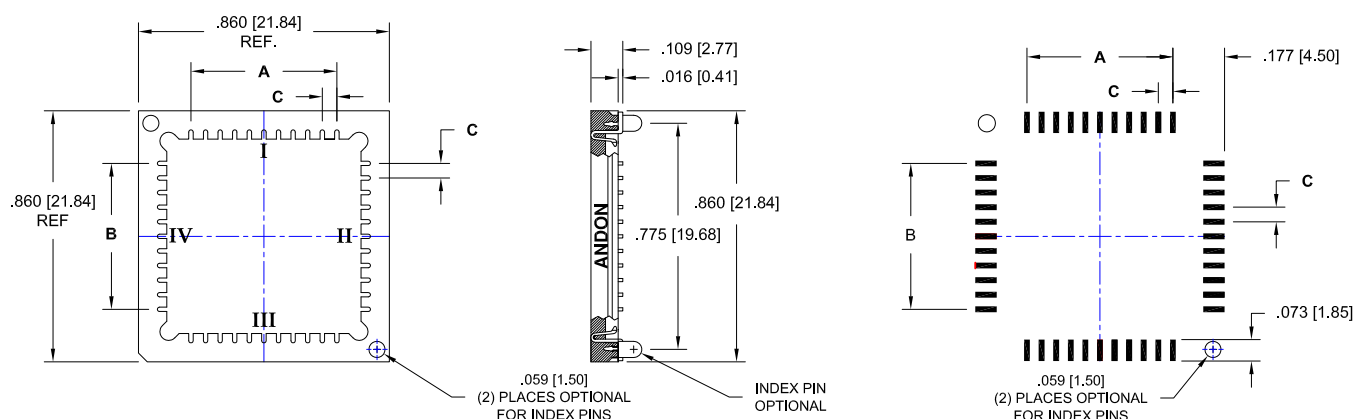


**Featuring Andon's Unique Senstac™ Contact**

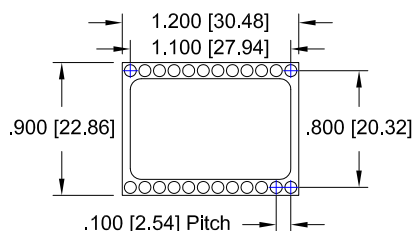
JMSIENNA CO.,LTD® is a trade mark of JMSIENNA CO.,LTD

| JMSIENNA CO.,LTD                 |   |               |               |               |                  |                |
|----------------------------------|---|---------------|---------------|---------------|------------------|----------------|
| JMSIENNA CO.,LTD<br>Model Number | Andon Part Number<br>Replace "XXX" with Terminal Type | Terminal Type |               | Pin Ø<br>[in] | Figure<br>Number | Page<br>Number |
|                                  |   | Thru-Hole     | Surface Mount |               |                  |                |
| ALS-5FLAMP-V1.00                 | R100-0402-05N-XXX-R27-L14                             | 75S           | 265S          | .018          | 4                | 2              |
| ALS-5FLAMP-V1.11                 | R100-0402-05N-XXX-R27-L14                             | 75S           | 265S          | .018          | 4                | 2              |
| FPA-320x256-CLCC                 | 620-44-SM-G10-L14-X                                   | -             | -             | -             | 1                | 1              |
| FPA-320x256-DIP                  | IS229-828-XXX-R27-L14                                 | 88S           | 93S           | .018          | 2                | 2              |
| FPA-640x512-DIP                  | IS229-828-XXX-R27-L14                                 | 88S           | 93S           | .018          | 2                | 2              |
| JMSLPD-1000-TO V2.00             | R100-0403-02N-XXX-R27-L14                             | 75S           | 265S          | .018          | 3                | 1              |

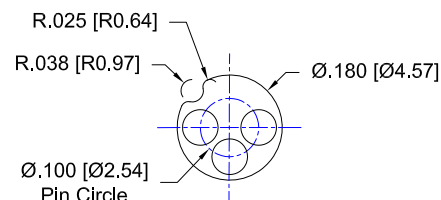
See last page for other mounting types including low profile options.  
Heat sink socket available to reduce heat and noise. Contact Andon for details.



**Fig. 1**  
44 Pins  
Surface Mount: 620-44-SM-G10-L14-X



**Fig. 2**  
Thru-Hole: IS229-828-88S-R27-L14  
Surface Mount: IS229-828-93S-R27-L14

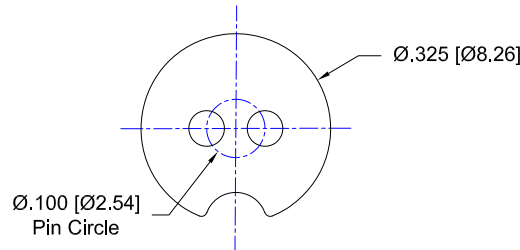


**Fig. 3**  
Thru-Hole: R100-0403-02N-75S-R27-L14  
Surface Mount: R100-0403-02N-265S-R27-L14

## JMSIENNA CO.,LTD *Continued*

### Image Sensor Socket Footprints

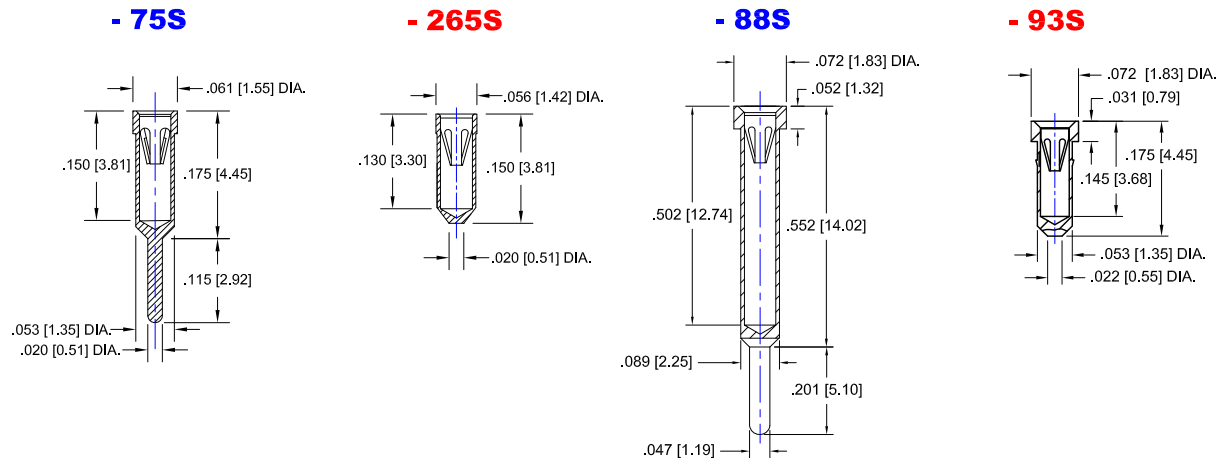
Units: in [mm]



**Fig. 4**

Thru-Hole: R100-0402-05N-**75S**-R27-L14

Surface Mount: R100-0402-05N-**265S**-R27-L14



## Technical Information

### Material:

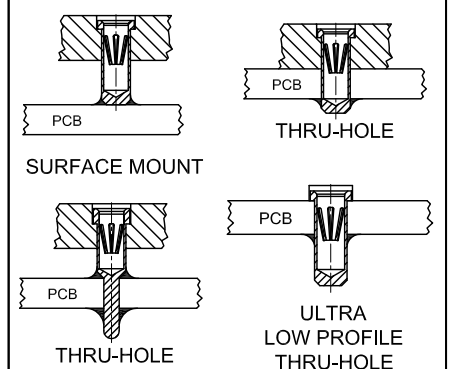
Insulator: Hi-Temp UL 94V-O  
Terminal: Brass, per ASTM-B16  
Contact: BeCu, Per ASTM-B194

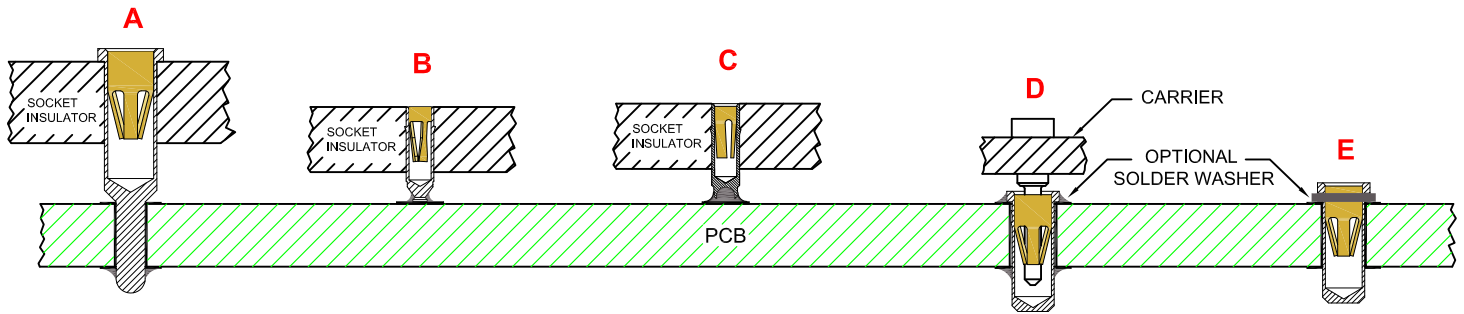
### Plating: RoHS COMPLIANT

**R17 TERMINAL: MATTE TIN / CONTACT: GOLD**  
**R27 TERMINAL: GOLD / CONTACT: GOLD**  
**R32 TERMINAL: MATTE TIN / CONTACT: TIN**  
**OTHER PLATINGS AVAILABLE**

| Terminal Acceptance and Forces |                      |                 |                  |                         |                      |                 |                  |
|--------------------------------|----------------------|-----------------|------------------|-------------------------|----------------------|-----------------|------------------|
| Thru Hole Terminals            |                      |                 |                  | Surface Mount Terminals |                      |                 |                  |
| Thru Hole Terminal             | Accepts Pin Diameter | Insertion Force | Withdrawal Force | Surface Mount Terminal  | Accepts Pin Diameter | Insertion Force | Withdrawal Force |
| <b>-75S</b>                    | Ø.018 [Ø0.46]        | 9.0 oz Avg.     | 2.0 oz Min       | <b>-265S</b>            | Ø.018 [Ø0.46]        | 9.0 oz Avg.     | 2.0 oz Min       |
| <b>-88S</b>                    | Ø.018 [Ø0.46]        | 9.0 oz Avg.     | 2.0 oz Min       | <b>-93S</b>             | Ø.018 [Ø0.46]        | 9.0 oz Avg.     | 2.0 oz Min       |

### MOUNTING OPTIONS





**THRU-HOLE  
SOCKET**

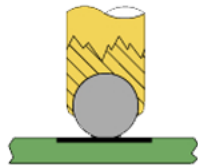
**SMD-SOCKET**

**SMD  
ROLLERBALL®  
SOCKET  
(PATENTED)**

**REMOVABLE  
CARRIER  
WITH ULTRA-LOW  
PROFILE PIN SOCKETS**

**INDIVIDUAL  
ULTRA-LOW PROFILE  
PIN SOCKETS  
(BEFORE SOLDERING)**

**ROLLERBALL®  
SOCKET**



**BEFORE SOLDERING**

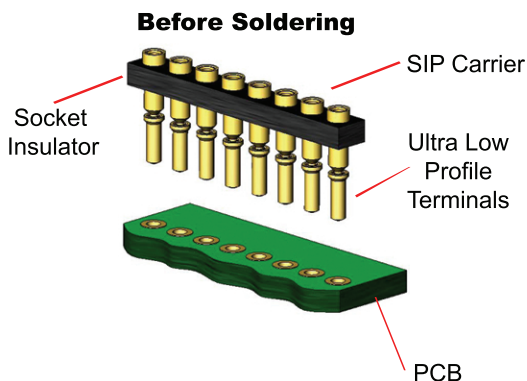
**ROLLERBALL®  
SOCKET**



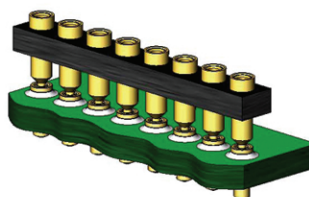
**AFTER SOLDERING**

**A more reliable solder joint for surface mount applications !**

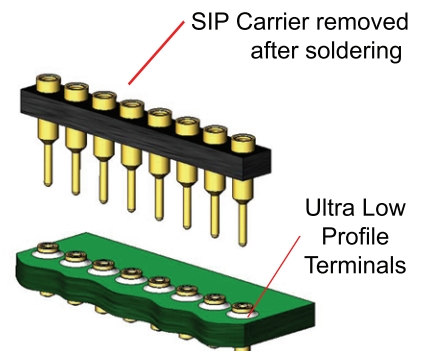
**ULTRA LOW PROFILE SIP/DIP/PGA CARRIER ASSEMBLY See 'D' above**



**During Soldering**



**After Soldering**



**Available with or without solder washer**