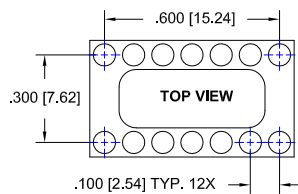


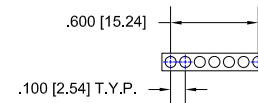
DENSELIGHT SEMICONDUCTORS						
DENSELIGHT SEMICONDUCTORS Model Number	Andon Part Number Replace "XXX" with Terminal Type	Terminal Type		Pin Ø [in]	Figure Number	Page Number
		Thru-Hole	Surface Mount			
DL-US3044H	R080-0404-01N-XXX-R27-L14	274K	281K	.018	3	2
DL-US3064H	R080-0404-01N-XXX-R27-L14	274K	281K	.018	3	2
DL-US3104H	R080-0404-01N-XXX-R27-L14	274K	281K	.018	3	2
DL-US3084D	R080-0404-01N-XXX-R27-L14	274K	281K	.018	3	2
DL-US5084D	R080-0404-01N-XXX-R27-L14	274K	281K	.018	3	2
DL-US3044H	R080-0404-01N-XXX-R27-L14	274K	281K	.018	3	2
DL-CS6055A	C10-007-07-01-XXX-R27-L14	556S	-	.018	2	2
DL-CS6107A	C10-007-07-01-XXX-R27-L14	556S	-	.018	2	2
DL-CS62M7A	C10-007-07-01-XXX-R27-L14	556S	-	.018	2	2
DL-CS48H5A	C10-007-07-01-XXX-R27-L14	556S	-	.018	2	2
DL-CS40H2A	C10-007-07-01-XXX-R27-L14	556S	-	.018	2	2
DL-CS5037A	C10-007-07-01-XXX-R27-L14	556S	-	.018	2	2
DL-CD5077A	C10-007-07-01-XXX-R27-L14	556S	-	.018	2	2
DL-CS5107A	C10-007-07-01-XXX-R27-L14	556S	-	.018	2	2
DL-CS65L9A	C10-007-07-01-XXX-R27-L14	556S	-	.018	2	2
DL-CS65M5A	C10-007-07-01-XXX-R27-L14	556S	-	.018	2	2
DL-CS69M5A	C10-007-07-01-XXX-R27-L14	556S	-	.018	2	2
DL-CS5103A	C10-007-07-01-XXX-R27-L14	556S	-	.018	2	2
DL-CS43H4A	C10-007-07-01-XXX-R27-L14	556S	-	.018	2	2
DL-CS44H4A	C10-007-07-01-XXX-R27-L14	556S	-	.018	2	2
DL-CS5153A	C10-007-07-01-XXX-R27-L14	556S	-	.018	2	2
DL-CS5203A	C10-007-07-01-XXX-R27-L14	556S	-	.018	2	2
DL-CS5254A	C10-007-07-01-XXX-R27-L14	556S	-	.018	2	2
DL-CS5403A	C10-007-07-01-XXX-R27-L14	556S	-	.018	2	2
DL-CS58M7A	C10-007-07-01-XXX-R27-L14	556S	-	.018	2	2
DL-CS5169A	C10-007-07-01-XXX-R27-L14	556S	-	.018	2	2
DL-CS3024A	C10-007-07-01-XXX-R27-L14	556S	-	.018	2	2
DL-CS3055A	C10-007-07-01-XXX-R27-L14	556S	-	.018	2	2
DL-CS3207A	C10-007-07-01-XXX-R27-L14	556S	-	.018	2	2
DL-CS3307A	C10-007-07-01-XXX-R27-L14	556S	-	.018	2	2
DL-CS3404A	C10-007-07-01-XXX-R27-L14	556S	-	.018	2	2
DL-CS3452A	C10-007-07-01-XXX-R27-L14	556S	-	.018	2	2
DL-CS3504A	C10-007-07-01-XXX-R27-L14	556S	-	.018	2	2
DL-CS3059L	C10-007-07-01-XXX-R27-L14	556S	-	.018	2	2
DL-CS35H5A	C10-007-07-01-XXX-R27-L14	556S	-	.018	2	2
DL-CS2079A	C10-007-07-01-XXX-R27-L14	556S	-	.018	2	2
DL-CS3089A	C10-007-07-01-XXX-R27-L14	556S	-	.018	2	2
DL-CS3152A	C10-007-07-01-XXX-R27-L14	556S	-	.018	2	2
DL-CS3159A	C10-007-07-01-XXX-R27-L14	556S	-	.018	2	2
DL-CS2184A	C10-007-07-01-XXX-R27-L14	556S	-	.018	2	2
DL-CS2184A	C10-007-07-01-XXX-R27-L14	556S	-	.018	2	2
DL-CS3184A	C10-007-07-01-XXX-R27-L14	556S	-	.018	2	2
DL-CS3202A	C10-007-07-01-XXX-R27-L14	556S	-	.018	2	2
DL-CS3102A/E	C10-007-07-01-XXX-R27-L14	556S	-	.018	2	2
DL-CS58L9B	C10-314-14-01-XXX-R27-L14	295V	439V	.030	1	2
DL-CS5029L	C10-314-14-01-XXX-R27-L14	295V	439V	.030	1	2
DL-CS5029N	C10-314-14-01-XXX-R27-L14	295V	439V	.030	1	2
DL-CS5014A	C10-314-14-01-XXX-R27-L14	295V	439V	.030	1	2
DL-CS3034L	C10-314-14-01-XXX-R27-L14	295V	439V	.030	1	2
DL-CS3059N	C10-314-14-01-XXX-R27-L14	295V	439V	.030	1	2
DL-CS3014A	C10-314-14-01-XXX-R27-L14	295V	439V	.030	1	2
DL-CS39L5B	C10-314-14-01-XXX-R27-L14	295V	439V	.030	1	2
DL-CS2184B	C10-314-14-01-XXX-R27-L14	295V	439V	.030	1	2
DL-CS3055B	C10-314-14-01-XXX-R27-L14	295V	439V	.030	1	2
DL-CS3024B	C10-314-14-01-XXX-R27-L14	295V	439V	.030	1	2
DL-CS3102B	C10-314-14-01-XXX-R27-L14	295V	439V	.030	1	2
DL-CS3202B	C10-314-14-01-XXX-R27-L14	295V	439V	.030	1	2

DENSELIGHT SEMICONDUCTORS						
DENSELIGHT SEMICONDUCTORS Model Number	Andon Part Number Replace "XXX" with Terminal Type	Terminal Type		Pin Ø [in]	Figure Number	Page Number
		Thru-Hole	Surface Mount			
DL-CS3184B	C10-314-14-01-XXX-R27-L14	295V	439V	.030	1	2
DL-CS40H2B	C10-314-14-01-XXX-R27-L14	295V	439V	.030	1	2
DL-CS48H5B	C10-314-14-01-XXX-R27-L14	295V	439V	.030	1	2
DL-CS5037B	C10-314-14-01-XXX-R27-L14	295V	439V	.030	1	2
DL-CS5077B	C10-314-14-01-XXX-R27-L14	295V	439V	.030	1	2
DL-CS5107B	C10-314-14-01-XXX-R27-L14	295V	439V	.030	1	2
DL-CS5103B	C10-314-14-01-XXX-R27-L14	295V	439V	.030	1	2
DL-CS6055B	C10-314-14-01-XXX-R27-L14	295V	439V	.030	1	2
DL-CS6107B	C10-314-14-01-XXX-R27-L14	295V	439V	.030	1	2
DL-CS62M7B	C10-314-14-01-XXX-R27-L14	295V	439V	.030	1	2



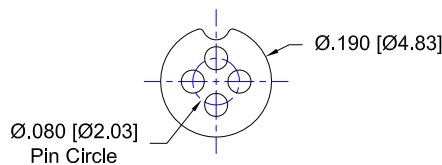
**FIG. 1**

Thru-Hole: C10-314-14-01-295V-R27-L14  
Surface Mount: C10-314-14-01-439V-R27-L14



**FIG. 2**

SOLDER CUP: C10-007-07-01-556S-R27-L14

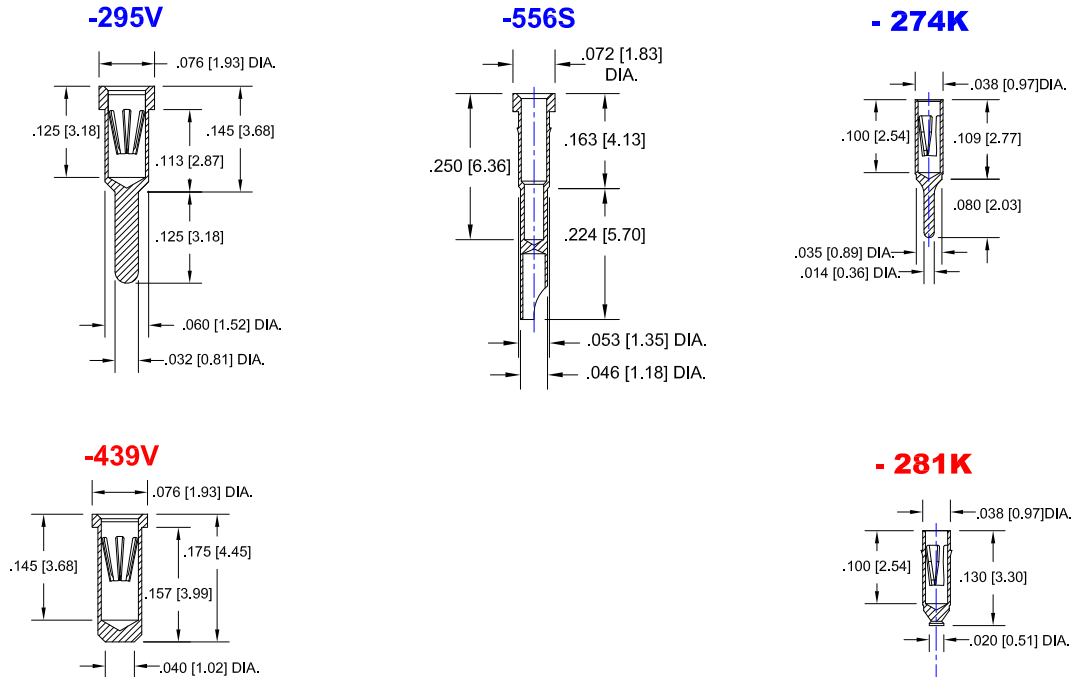


**FIG. 3**

Thru-Hole: R080-0404-01N-274K-R27-L14  
Surface Mount: R080-0404-01N-281K-R27-L14

## DENSELIGHT SEMICONDUCTORS *Continued*

### Socket Terminal Details Cross Section View Shown Units: in [mm]



## Technical Information

### Material:

Insulator: Hi-Temp UL 94V-0  
 Terminal: Brass, per ASTM-B16  
 Contact: BeCu, Per ASTM-B194

### Plating: RoHS COMPLIANT

**R15 TERMINAL: GOLD / CONTACT: GOLD**  
**R17 TERMINAL: TIN / CONTACT: GOLD**  
**OTHER PLATINGS AVAILABLE**

### Terminal Acceptance and Forces

Thru Hole Terminals				Surface Mount Terminals			
Thru Hole Terminal	Accepts Pin Diameter	Insertion Force	Withdrawal Force	Surface Mount Terminal	Accepts Pin Diameter	Insertion Force	Withdrawal Force
-274K	Ø.018 [Ø0.46]	1.0 oz Avg.	0.5 oz Min	-281K	Ø.018 [Ø0.46]	1.0 oz Avg.	0.5 oz Min
-556S	Ø.018 [Ø0.46]	9.0 oz Avg.	2.0 oz Min	N/A	-	-	-
-295V	Ø.030 [Ø0.76]	13.2 oz Avg.	3.5 oz Min	-439V	Ø.030 [Ø0.76]	13.2 oz Avg.	3.5 oz Min

### MOUNTING OPTIONS

