



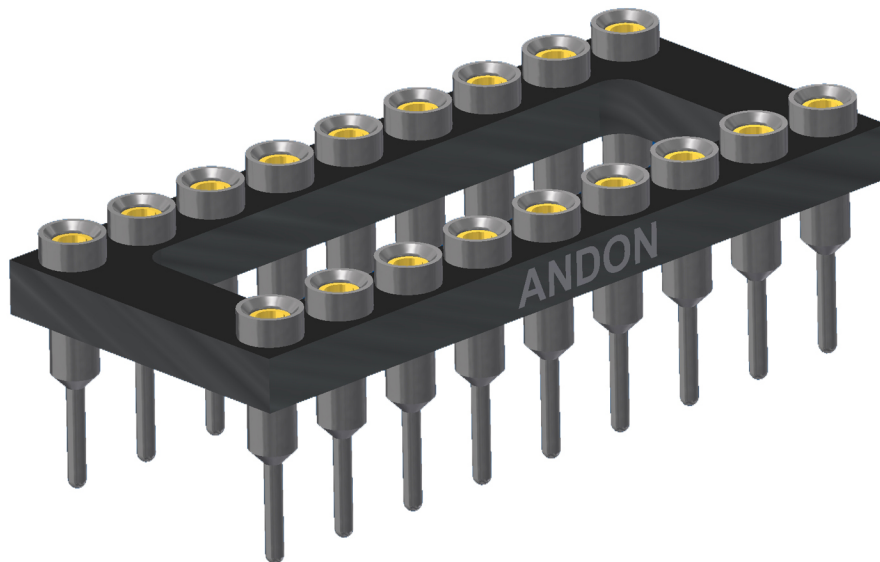
ANDON
INTERCONNECTION SPECIALISTS



RoHS Compliant
ISO 9001
Certified

HIGH RELIABILITY IMAGE SENSOR SOCKETS FOR

EXCELITAS
TECHNOLOGIES



Featuring Andon's Unique Senstac™ Contact

EXCELITAS TECHNOLOGIES is a trade mark of EXCELITAS TECHNOLOGIES

EXCELITAS TECHNOLOGIES						
Image Sensor Number	Andon Part Number Replace "XXX" with Terminal Type	Terminal Type		Pin Ø [in]	Figure Number	Page Number
		Thru-Hole	Surface Mount			
2K ARRAY	IS229-420-XXX-R29-L14	01S	93S	.018	1	1
4K ARRAY	IS231-6140-XXX-R29-L14	01S	93S	.018	5	2
PT1109AAQ-711	IS229-432-XXX-R29-L14	80S	93S	.018	3	1
R2048PAG-021	IS229-420-XXX-R29-L14	01S	93S	.018	1	1
RL0512PAG-021	IS229-420-XXX-R29-L14	01S	93S	.018	1	1
RL0512PAQ-021	IS229-420-XXX-R29-L14	01S	93S	.018	1	1
RL1024PAG-021	IS229-420-XXX-R29-L14	01S	93S	.018	1	1
RL1024PAQ-021	IS229-420-XXX-R29-L14	01S	93S	.018	1	1
RL1201	IS229-422-XXX-R29-L14	01S	93S	.018	2	1
RL1202	IS229-422-XXX-R29-L14	01S	93S	.018	2	1
RL1210	IS229-422-XXX-R29-L14	01S	93S	.018	2	1
RL1215	IS229-422-XXX-R29-L14	01S	93S	.018	2	1
RL1501	IS229-422-XXX-R29-L14	01S	93S	.018	2	1
RL1502	IS229-422-XXX-R29-L14	01S	93S	.018	2	1
RL1505	IS229-422-XXX-R29-L14	01S	93S	.018	2	1
RL2048PAQ-021	IS229-420-XXX-R29-L14	01S	93S	.018	1	1
VTA1616H SERIES	IS229-618-XXX-R29-L14	01S	93S	.018	6	2
VTA1616H SERIES	IS229-318-XXX-R29-L14	01S	93S	.018	4	1

See last page for other mounting types including low profile options.
Heat sink socket available to reduce heat and noise. Contact Andon for details.

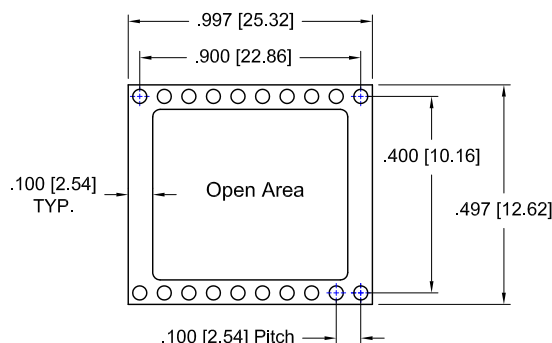


Fig. 1

Thru-Hole: IS229-420-01S-R29-L14
Surface Mount: IS229-420-93S-R29-L14

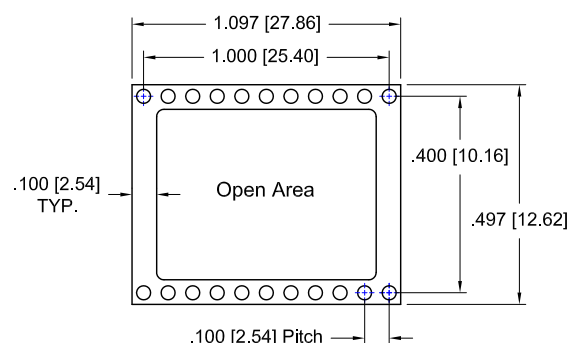


Fig. 2

Thru-Hole: IS229-422-01S-R29-L14
Surface Mount: IS229-422-93S-R29-L14

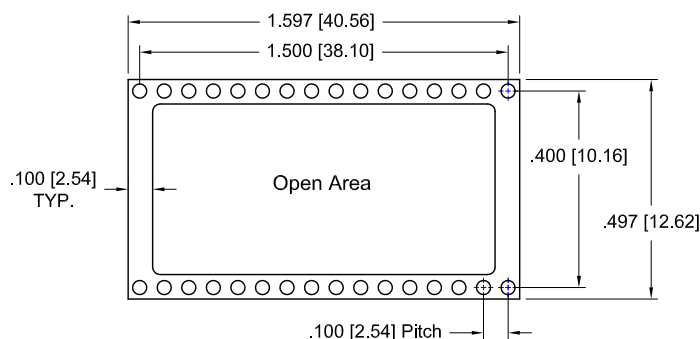


Fig. 3

Thru-Hole: IS229-432-80S-R29-L14
Surface Mount: IS229-432-93S-R29-L14

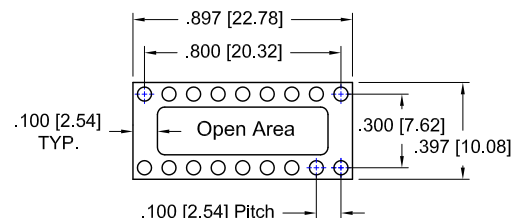


Fig. 4

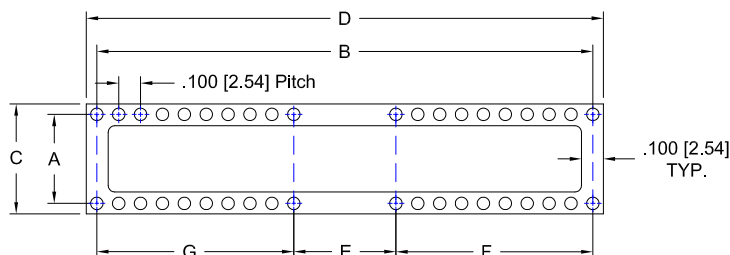
Thru-Hole: IS229-318-01S-R29-L14
Surface Mount: IS229-318-93S-R29-L14

EXCELITAS TECHNOLOGIES *Continued*

Image Sensor Socket Footprints

Units: in [mm]

Fig. 5



Andon Part Number w/Thru-hole Terminal	SMT	FIG #	Pin QTY	A	B	C	D	E	F	G
IS231-428-01S-R29-L14	93S	5	28	.400 (10.16)	2.500 (63.50)	.497 (12.62)	2.597 (65.96)	1.300 (33.02)	.600 (15.24)	.600 (15.24)
IS231-622-01S-R29-L14	93S	5	22	.600 (15.24)	1.900 (48.26)	.697 (17.70)	1.997 (50.72)	1.000 (25.40)	.500 (12.70)	.400 (10.16)
IS231-636-01S-R29-L14	93S	5	36	.600 (15.24)	3.500 (88.90)	.697 (17.70)	3.597 (91.36)	1.900 (48.26)	.800 (20.32)	.800 (20.32)
IS231-644-80M-R29-L14	93S	5	44	.600 (15.24)	3.500 (88.90)	.697 (17.70)	3.597 (91.36)	1.500 (38.10)	1.000 (25.40)	1.000 (25.40)
IS231-6140-01S-R29-L14	93S	5	40	.610 (15.49)	2.500 (63.50)	.707 (17.96)	2.597 (65.96)	.700 (17.78)	.900 (22.86)	.900 (22.86)

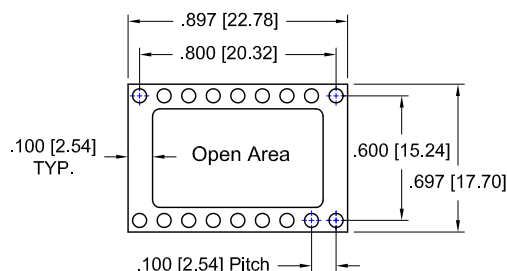


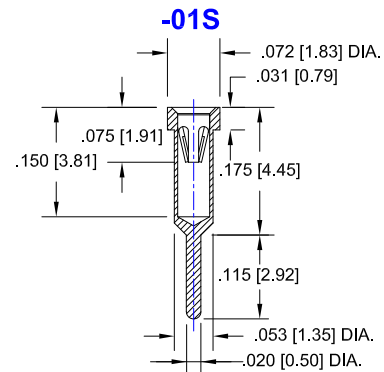
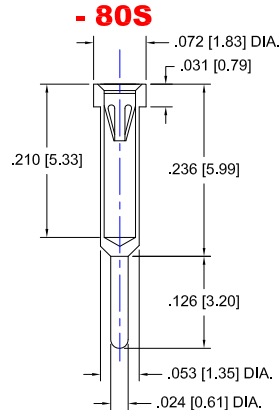
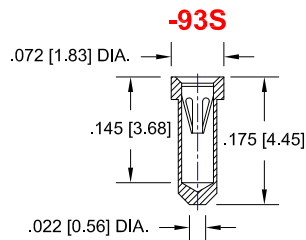
Fig. 6

Thru-Hole: IS229-618-01S-R29-L14
Surface Mount: IS229-618-93S-R29-L14

EXCELITAS TECHNOLOGIES *Continued*

Socket Terminal Details

Cross Section View Shown Units: in[mm]



Material:

Insulator: Hi-Temp UL 94V-O
Terminal: Brass, per ASTM-B16
Contact: BeCu, Per ASTM-B194

Plating: RoHS COMPLIANT

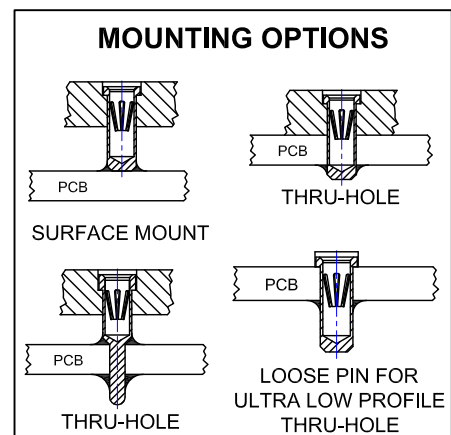
R27 TERMINAL: GOLD / CONTACT: GOLD

R29 TERMINAL: TIN / CONTACT: GOLD

OTHER PLATINGS AVAILABLE

Terminal Acceptance and Forces

Thru Hole Terminals				Surface Mount Terminals			
Thru Hole Terminal	Accepts Pin Diameter	Insertion Force	Withdrawal Force	Surface Mount Terminal	Accepts Pin Diameter	Insertion Force	Withdrawal Force
-01S	Ø.018 [Ø0.46]	9.0 oz Max	2.0 oz Min	-93S	Ø.018 [Ø0.46]	9.0 oz Max	2.0 oz Min
-80S	Ø.018 [Ø0.46]	9.0 oz Max	2.0 oz Min	-93S	Ø.018 [Ø0.46]	9.0 oz Max	2.0 oz Min



©Copyright 2016 Andon Electronics Corporation. All Rights Reserved. This material is protected under US and other copyrights and may not be copied, sold, or redistributed in any form without written permission of Andon Electronics Corporation. Copyrights and trademarks are property of their respective companies. We reserve the right to change specifications without notice. Andon makes no warranty, expressed or implied, as to the suitability of the sockets for the intended purpose.

"ANDON PROPRIETARY INFORMATION"

RoHS Compliant

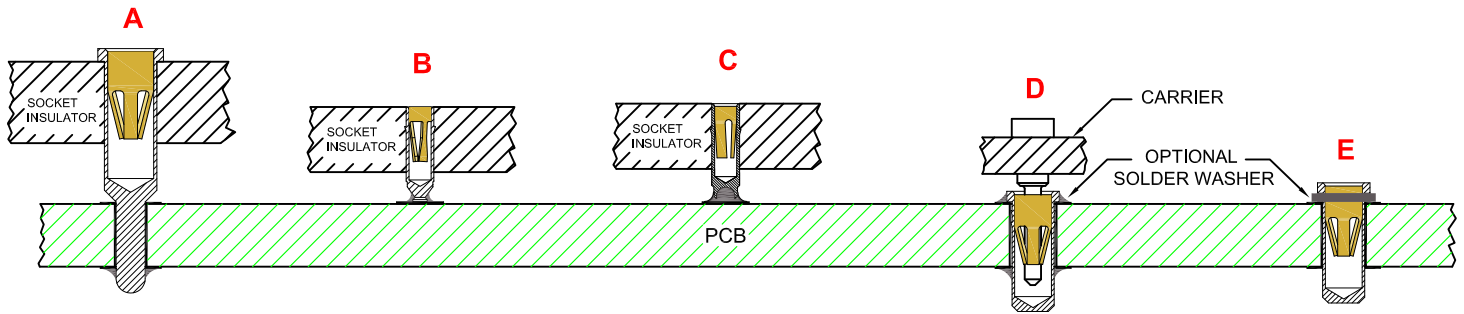
*Sockets are not drawn to scale EXCELITAS TECHNOLOGIES 8/5/2016

ANDON ELECTRONICS CORPORATION
4 Court Drive, Lincoln RI 02865, United States of America

www.andonelectronics.com or www.andonelect.com

Phone 401-333-0388 Fax 401-333-0287

Email Info@andonelect.com



**THRU-HOLE
SOCKET**

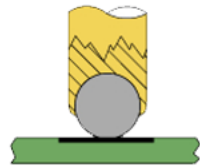
SMD-SOCKET

**SMD
ROLLERBALL®
SOCKET
(PATENTED)**

**REMOVABLE
CARRIER
WITH ULTRA-LOW
PROFILE PIN SOCKETS**

**INDIVIDUAL
ULTRA-LOW PROFILE
PIN SOCKETS
(BEFORE SOLDERING)**

**ROLLERBALL®
SOCKET**



BEFORE SOLDERING

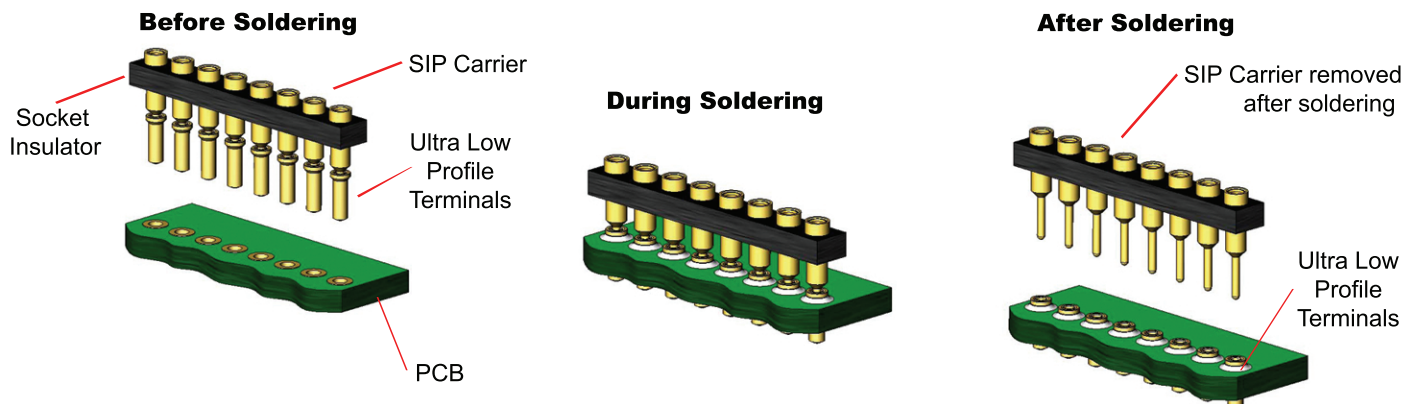
**ROLLERBALL®
SOCKET**



AFTER SOLDERING

A more reliable solder joint for surface mount applications !

ULTRA LOW PROFILE SIP/DIP/PGA CARRIER ASSEMBLY See 'D' above



Available with or without solder washer