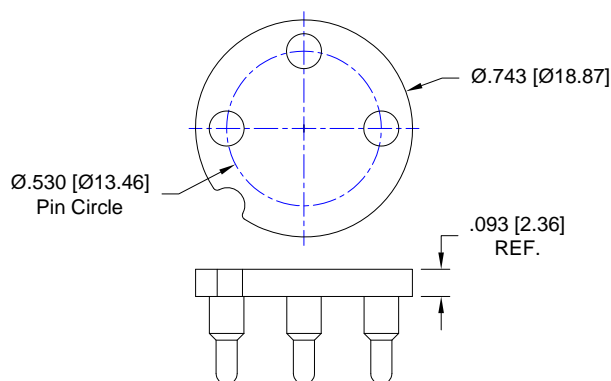


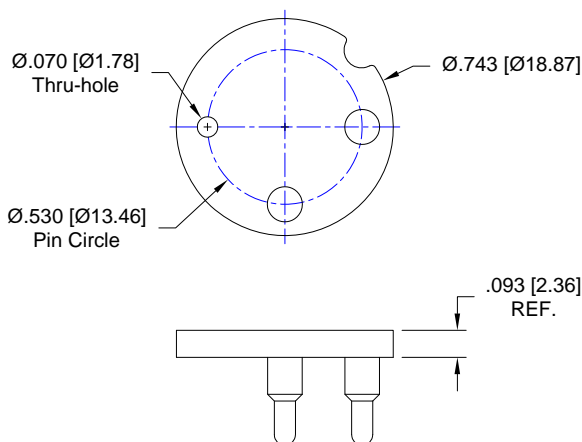
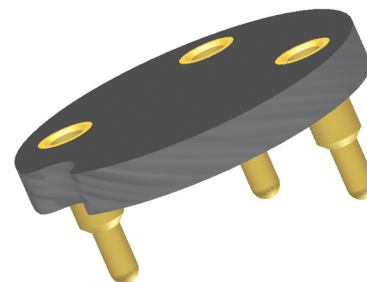
MRB Scientific Ltd. Sockets						
MRB Scientific Ltd. Sockets Model Number	Andon Part Number Replace "XXX" with Terminal Type	Terminal Type		Pin Ø [in]	Figure Number	Page Number
		Thru-Hole	Surface Mount			
S+2ECO	R530-0403-02N-XXX-R27-L14	436P55	440P55	.060	185	1
S+2ECOH	R530-0403-02N-XXX-R27-L14	436P55	440P55	.060	185	1
S+4CO	R530-0403-02N-XXX-R27-L14	436P55	440P55	.060	185	1
S+4DT	R530-SP04-01T-XXX-R27-L14	436P55	440P55	.060	189	1
S+4H2S	R530-0403-02N-XXX-R27-L14	436P55	440P55	.060	185	1
S+4OX	R530-SP02-02N-XXX-R27-L14	436P55	440P55	.060	187	1
S+7CO	R670-0804-02N-XXX-R27-L14	433E	285E	.040	196A	2
S+7ETO	R670-0804-02N-XXX-R27-L14	433E	285E	.040	196A	2
S+7H2S	R670-0804-02N-XXX-R27-L14	433E	285E	.040	196A	2
S+7NH3	R670-0804-02N-XXX-R27-L14	433E	285E	.040	196A	2
S+7OX	R670-SP02-02N-XXX-R27-L14	433E	285E	.040	199	2

## Top View Shown Units: in [mm]



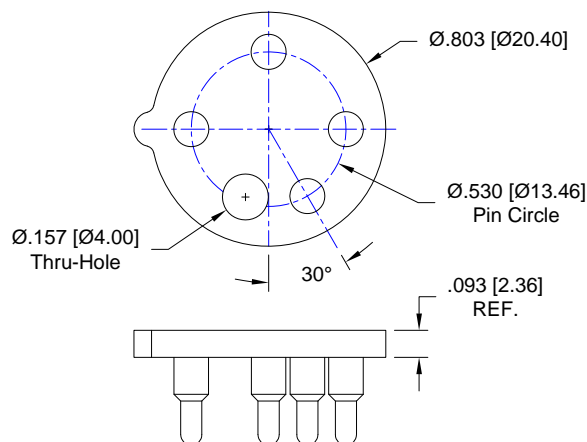
**Fig. 185**

Thru-Hole: R530-0403-02N-436P55-R27-L14  
Surface Mount: R530-0403-02N-440P55-R27-L14



**Fig. 187**

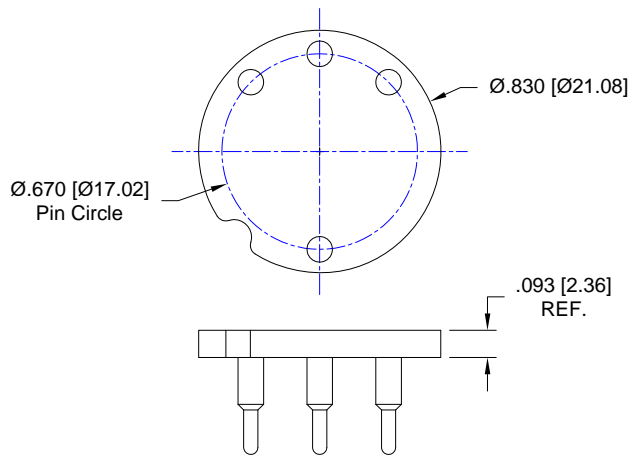
Thru-Hole: R530-SP02-02N-436P55-R27-L14  
Surface Mount: R530-SP02-02N-440P55-R27-L14



**Fig. 189**

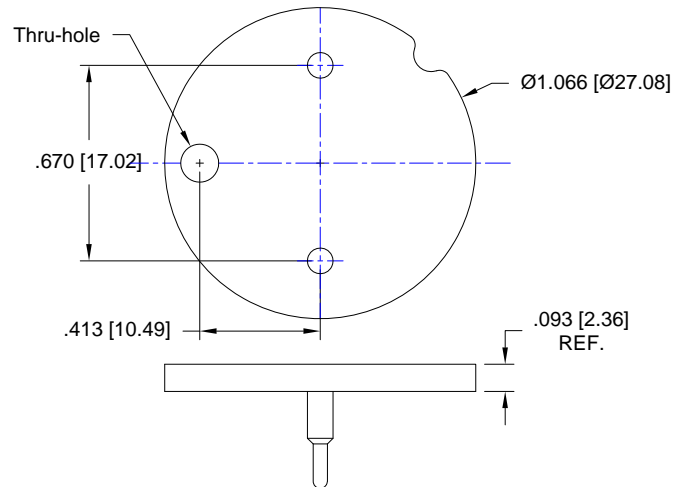
Thru-Hole: R530-SP04-01T-436P55-R27-L14  
Surface Mount: R530-SP04-01T-440P55-R27-L14

## MRB Scientific Ltd. Sockets Continued



**Fig. 196A**

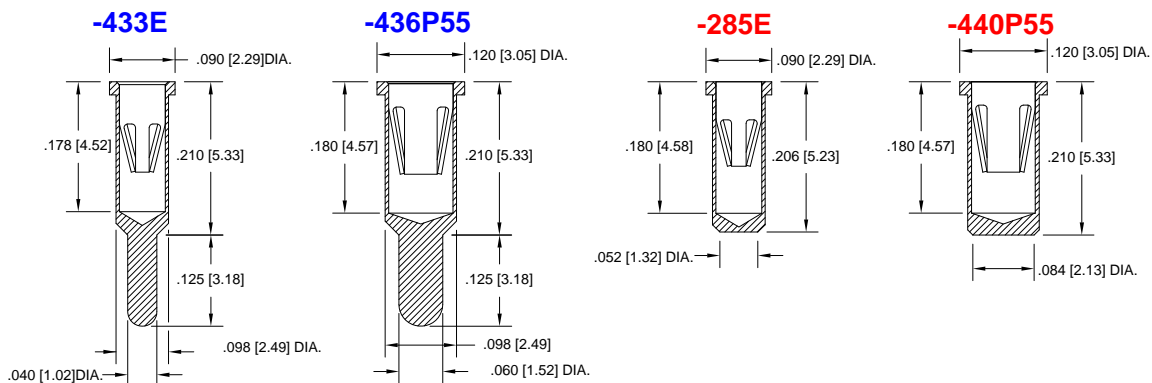
Thru-Hole: R670-0804-02N-433E-R27-L14  
Surface Mount: R670-0804-02N-285E-R27-L14



**Fig. 199**

Thru-Hole: R670-SP02-02N-433E-R27-L14  
Surface Mount: R670-SP02-02N-285E-R27-L14

## Socket Terminal Details Cross Section View Shown Units: in [mm]



## Technical Information

### Material:

Insulator: Hi-Temp UL 94V-O  
Terminal: Brass, per ASTM-B16  
Contact: BeCu, Per ASTM-B194

### Plating: RoHS COMPLIANT

R27 TERMINAL: GOLD / CONTACT: GOLD

R17 TERMINAL: TIN / CONTACT: GOLD

OTHER PLATINGS AVAILABLE

Terminal Acceptance and Forces							
Thru Hole Terminals				Surface Mount Terminals			
Thru Hole Terminal	Accepts Pin Diameter	Insertion Force	Withdrawal Force	Surface Mount Terminal	Accepts Pin Diameter	Insertion Force	Withdrawal Force
-433E	Ø.040 [Ø1.02]	36.0 oz Max	3.9 oz Min	-285E	Ø.040 [Ø1.02]	36.0 oz Max	3.9 oz Min
-436P55	Ø.060 [Ø1.52]	15.5 oz Max	2.1 oz Min	-440P55	Ø.060 [Ø1.52]	15.5 oz Max	2.1 oz Min

### MOUNTING OPTIONS

