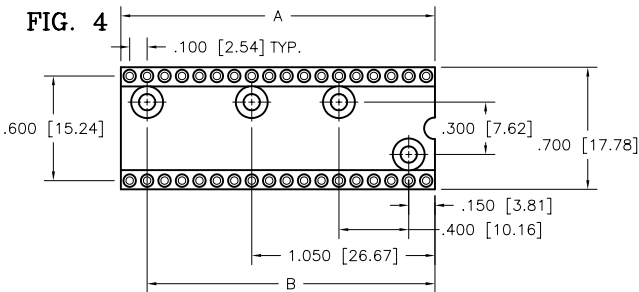
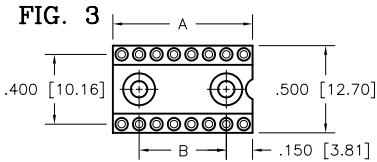
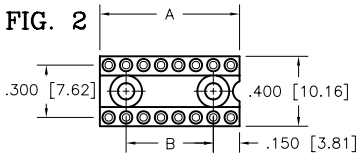
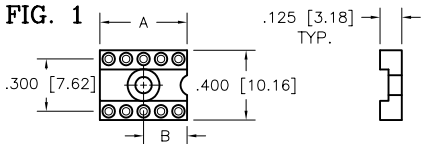
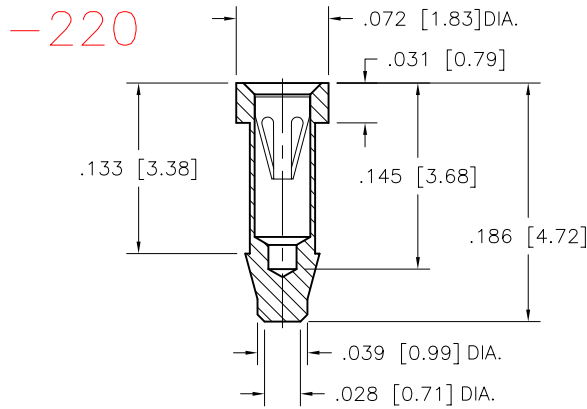


# FLOATING TERMINAL SOCKETS (SOLID FRAME)

AVAILABLE WITH AND WITHOUT MOUNTING HOLES

WAFER CHART				
	PIN	DIM "A"	DIM "B"	
FIG. 1	6	.300 [7.62]	.150 [3.81]	306
	8	.400 [10.16]	.200 [5.08]	308
	10	.500 [12.70]	.250 [6.35]	310
FIG. 2	14	.700 [17.78]	.400 [10.16]	314
	16	.800 [20.32]	.500 [12.70]	316
	18	.900 [22.86]	.600 [15.24]	318
	20	1.000 [25.40]	.700 [17.78]	320
	24	1.200 [30.48]	.900 [22.86]	324
FIG. 3	16	.800 [20.32]	.500 [12.70]	416
	22	1.100 [27.94]	.800 [20.32]	422
FIG. 4	24	1.200 [30.48]		624
	28	1.400 [35.56]		628
	30	1.500 [38.10]		630
	32	1.600 [40.64]		632
	36	1.800 [45.72]	1.650 [41.91]	636
	40	2.000 [50.80]	1.650 [41.91]	640



## TECHNICAL SPECIFICATIONS

**MATERIAL INSULATOR** GLASS FILLED NYLON 46  
UL 94V-0 LISTED

**TERMINAL CONTACT** BRASS PER ASTM-B16  
BeCu PER ASTM-B194

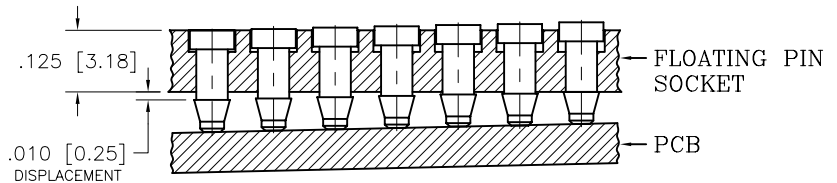
**OPERATING TEMP.** -65°C TO +150°C

### CONTACT FORCES

**INSERTION** STANDARD 9 oz. AVG.

**WITHDRAWAL** STANDARD 2 oz. MIN.

## APPLICATION



## CONTACT TYPE

<b>S: STANDARD DIP</b>	INSERTION FORCE	9.0 oz. AVG.
	WITHDRAWAL FORCE	2.0 oz. MIN.
<b>M: STANDARD PGA</b>	INSERTION FORCE	1.6 oz. MAX.
	WITHDRAWAL FORCE	0.5 oz. MIN.
<b>L: INTERSTITIAL PGA</b>	INSERTION FORCE	1.0 oz. MAX.
	WITHDRAWAL FORCE	0.3 oz. MIN.
<b>H: HIGH FORCE</b>	INSERTION FORCE	18.3 oz. MAX.
	WITHDRAWAL FORCE	4.2 oz. MIN.

## ORDERING INFORMATION

