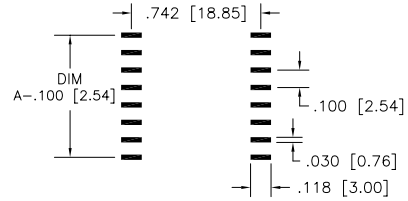
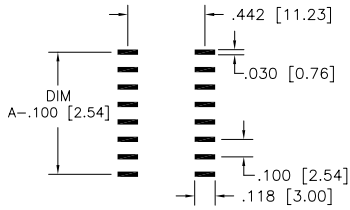


P.C.B. FOOTPRINT



| WAFER CHART | | | |
|-------------|-----|---------------|-----|
| | PIN | DIM "A" | |
| FIG. 1 | 6 | .300 [7.62] | 306 |
| | 8 | .400 [10.16] | 308 |
| | 10 | .500 [12.70] | 310 |
| | 14 | .700 [17.78] | 314 |
| | 16 | .800 [20.32] | 316 |
| | 18 | .900 [22.86] | 318 |
| | 20 | 1.000 [25.40] | 320 |
| | 24 | 1.200 [30.48] | 324 |
| FIG. 2 | 24 | 1.200 [30.48] | 624 |
| | 28 | 1.400 [35.56] | 628 |
| | 30 | 1.500 [38.10] | 630 |
| | 32 | 1.600 [40.64] | 632 |
| | 36 | 1.800 [45.72] | 636 |
| | 40 | 2.000 [50.80] | 640 |

TECHNICAL SPECIFICATIONS

MATERIAL INSULATOR HIGH TEMP. BLUE FR-4 EPOXY
UL 94V-0

TERMINAL CONTACT BRASS PER ASTM-B16
BeCu PER ASTM-B194

OPERATING TEMP. -65°C TO 150°C

CONTACT FORCES

INSERTION STANDARD 9 oz. AVG.
WITHDRAWAL STANDARD 2 oz. MIN.

ORDERING INFORMATION

218-XXX-232S-PXX-A10

SERIES ———

DIP - SPACING ———

NO. OF PINS ———

PLATING: TERMINAL / CONTACT
P30: GOLD / GOLD
P31: TIN-LEAD / GOLD
P32: TIN-LEAD / TIN
OTHER PLATINGS AVAILABLE
SEE OPTIONAL PLATINGS

TERMINAL ASSEMBLY